



Public Hearing

Ewell-Gimbert Cemetery Relocation for the Windsor Woods,
Princess Anne Plaza, and The Lakes Drainage Improvement Program

May 6, 2026



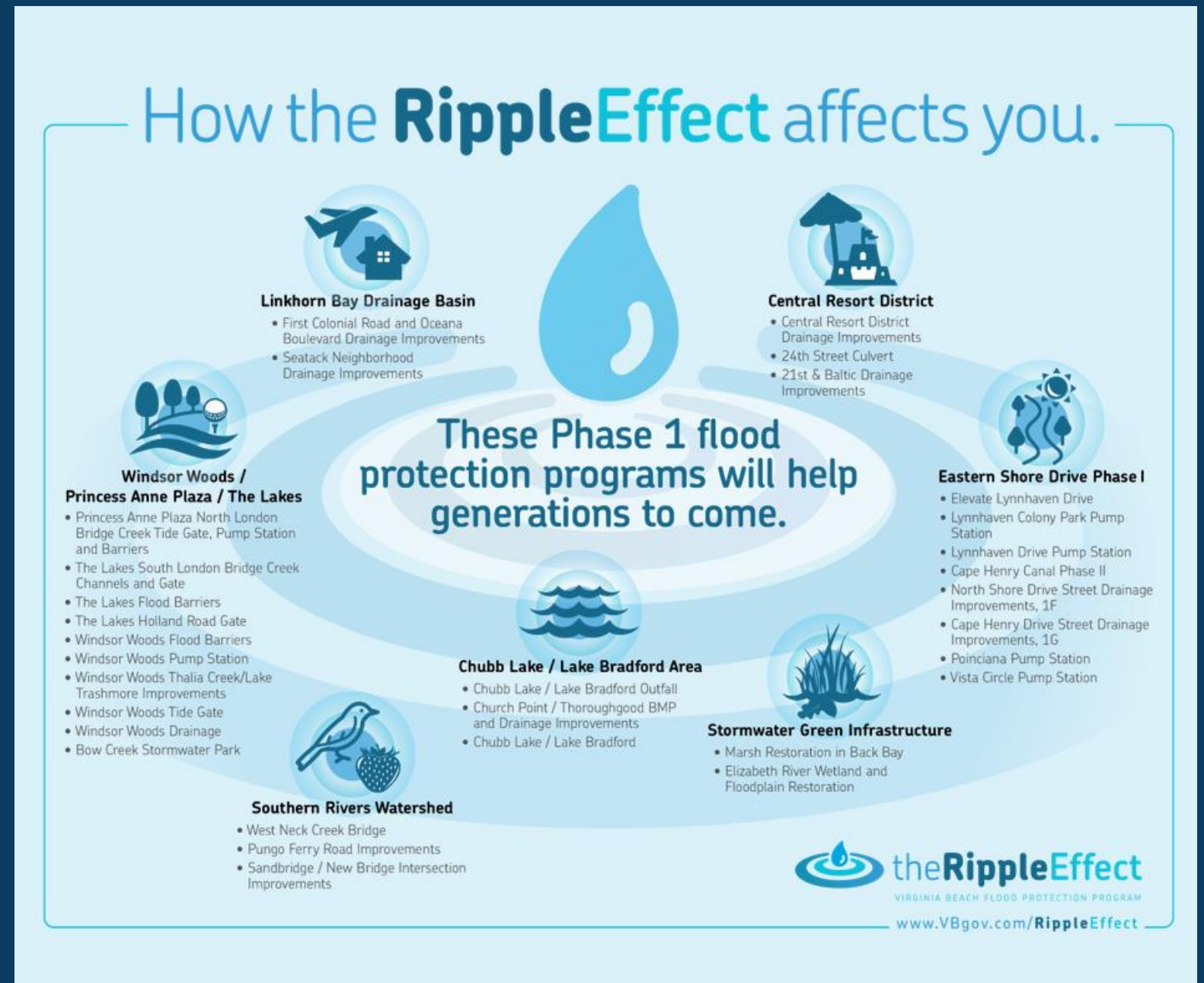
CITY OF
**VIRGINIA
BEACH**

Agenda

- Windsor Woods, Princess Anne Plaza, and The Lakes Overview
 - Overall Ripple Effect Program
 - Mega-Bundle Project Status
- Ewell-Gimbert Cemetery Relocation
- Questions

How the Ripple Effect impacts you.

During the General Election on November 2, 2021, City of Virginia Beach residents voted to authorize a **\$567.5M Bond Referendum** to fund the design and construction of the Phase 1 projects in the **Citywide Flood Protection Program**.



Windsor Woods, Princess Anne Plaza, and The Lakes Drainage Improvement Program

Overview

Overview

Windsor Woods

- Flood Barrier
- Pump Station
- Thalia Creek/Lake Trashmore Improvements

Princess Anne Plaza

- North London Bridge Creek Tide Gate and Pump Station
- North London Bridge Creek Flood Barriers

The Lakes

- South London Bridge Creek Channels and Tide Gate
- The Lakes Flood Barriers
- Holland Road Gate

Construction Timeline

February 2024
Design

Mid-2026
Construction start

2032
Construction Complete

Project Map



Ewell- Gimbert Cemetery Relocation

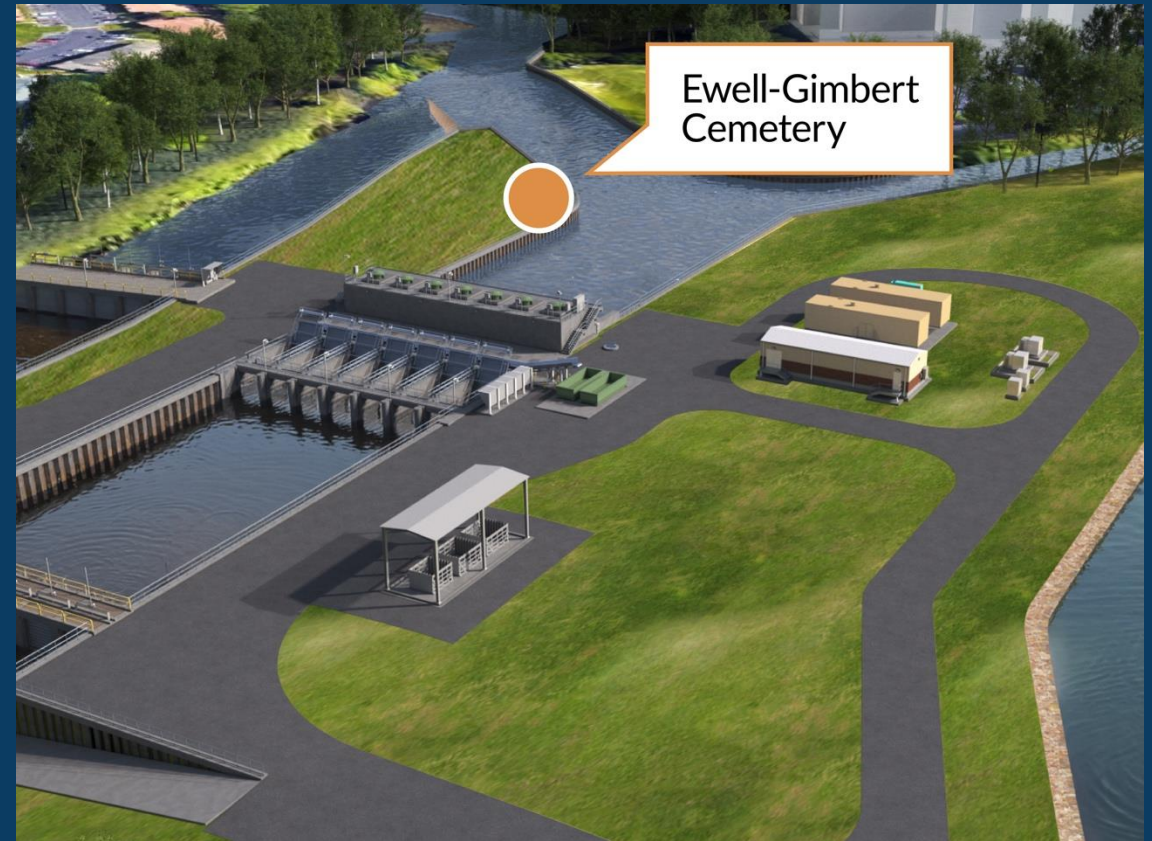
Overview

Location

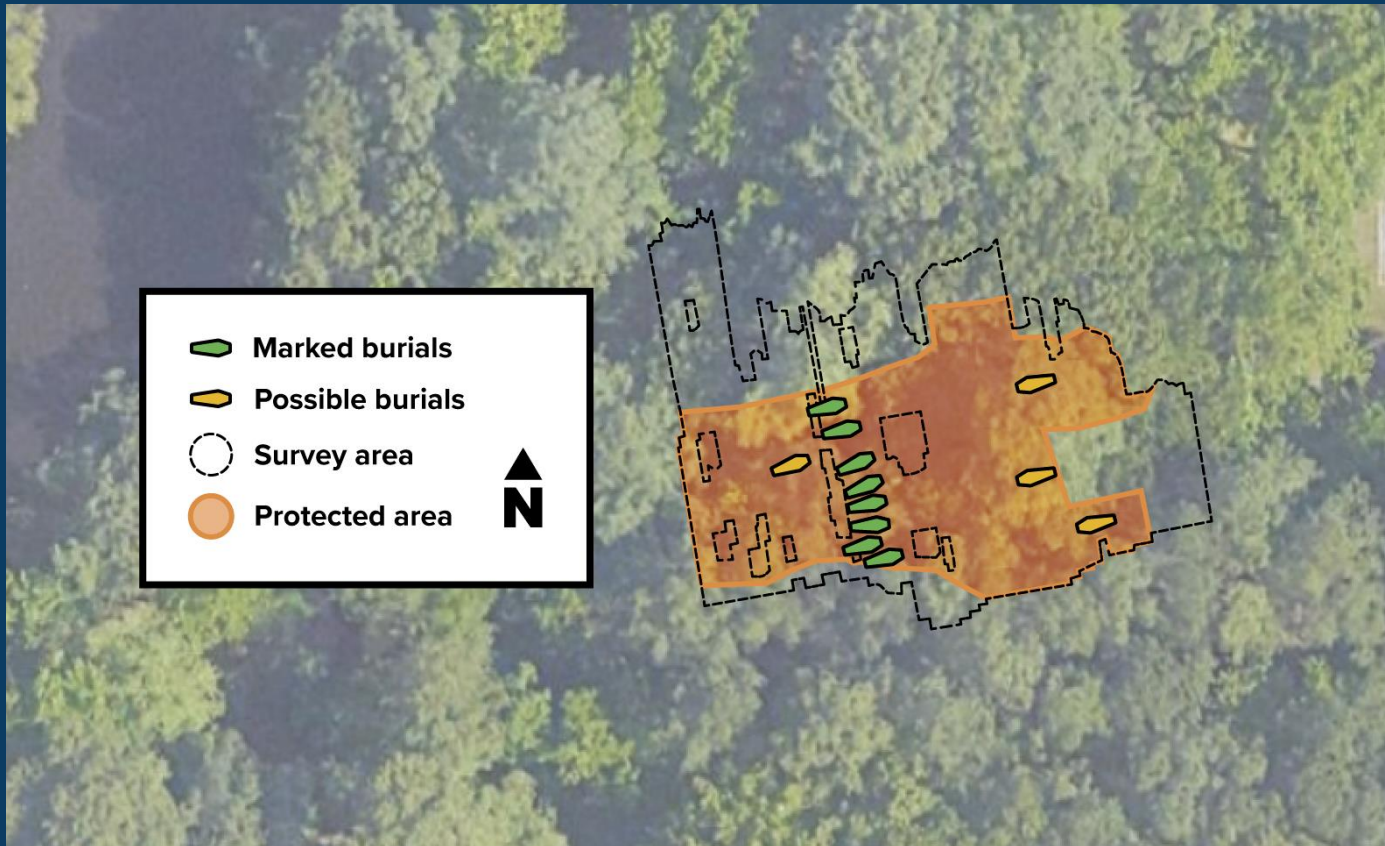


Location Details

- The cemetery is located within the construction zone for the North London Bridge Creek Tide Gate, Pump Station and Flood Barriers.
- There is no practical alternative location for the North London Bridge Creek Pump Station.
- The North London Bridge Creek Pump Station is essential for protecting the Princess Anne Plaza and The Lakes neighborhoods from major flooding.

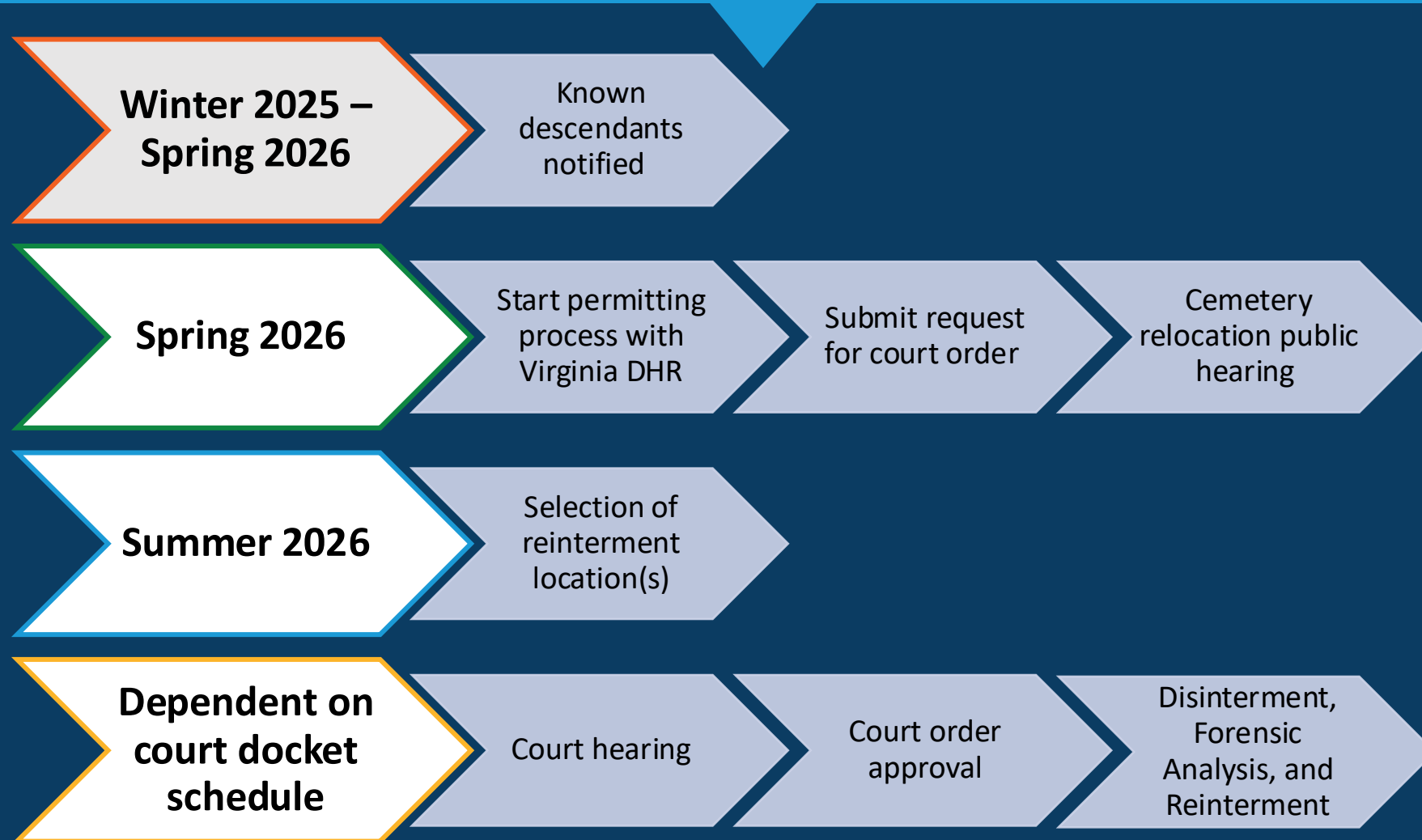


Archeological Findings



- Based on ground penetrating radar (GPR) and surface examination, there appears to be 12 graves.
 - Eight (8) marked
 - Four (4) unmarked
- The final number of graves will be confirmed during the disinterment process.

Relocation Timeline *(subject to change)*



Disinterment Process

- Scheduled once the Department of Historic Resources (DHR) permit and court order have been issued.
- Cemetery area is hand-cleared to identify all grave markers and surface features.
- Grave markers are carefully removed, documented, and catalogued.
- Surface soils are mechanically removed to identify grave shafts.
- Graves are hand excavated and human remains are documented.
- All human remains, funerary objects, and coffin hardware are recovered, catalogued, and analyzed.
- Detailed records are maintained throughout the process and compiled into a final report.



Reinterment Process



- Scheduled after disinterment and analysis are completed.
- Location and details of reinterment are determined in consultation with descendants.
- A reinterment plan is prepared and submitted for approval by the court and the DHR.
- Remains are typically reinterred in a local cemetery under the direction of a mortician or funerary professional. If possible, spatial relationship of burials are maintained and grave markers are reused.
- New memorial markers are prepared if the original markers cannot be used.

Questions?