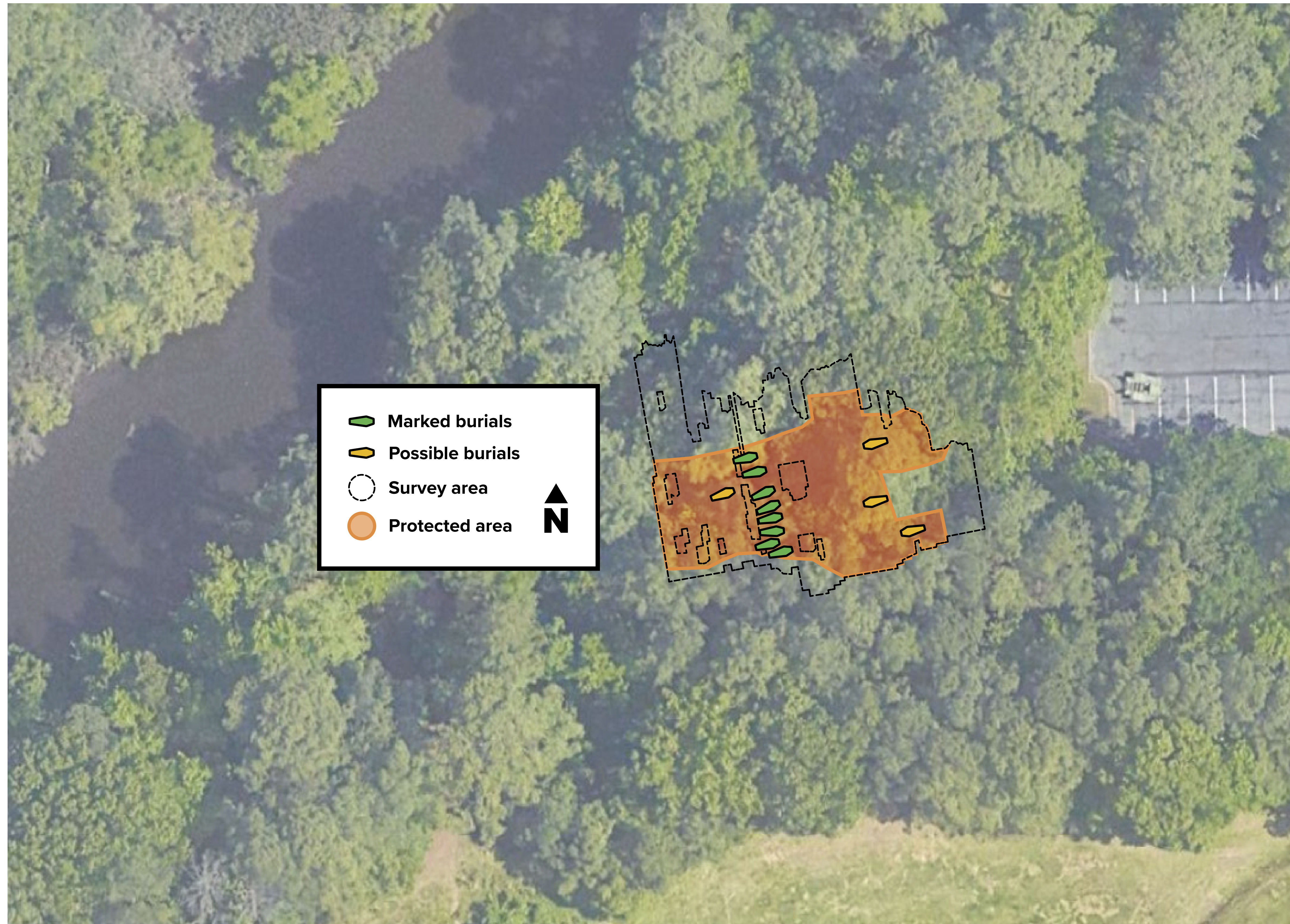




Ewell-Gimbert Cemetery

- Project design is 60% complete.
- Existing cemetery lies within the planned pump station footprint.
- There is no practical alternative location for the pump station.
- The pump station is essential for protecting the Princess Anne Plaza and The Lakes neighborhoods from major flooding.

Archeological Findings: Ewell-Gimbert Cemetery



- Based on a 2022 ground penetrating radar (GPR) and surface examination, there appears to be 12 graves:
 - Eight (8) marked graves
 - Four (4) unmarked graves
- The final number of graves will be confirmed during the disinterment process.

Project Area Identifying Location of Ewell-Gimbert Cemetery

