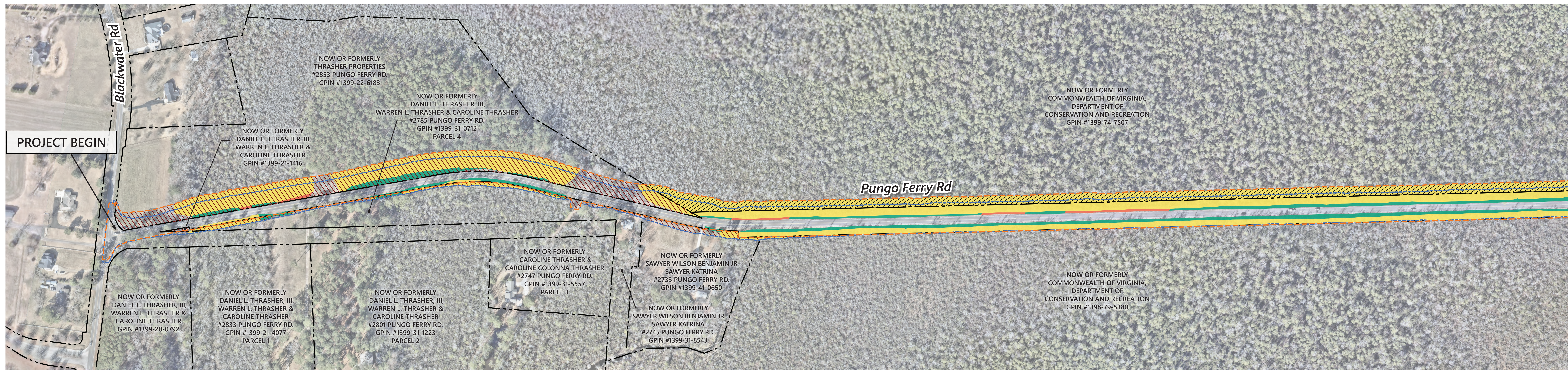


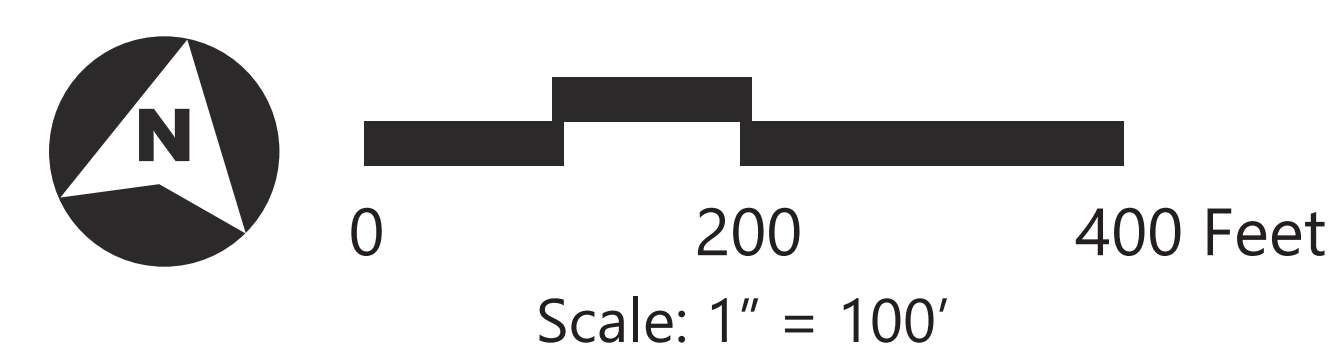
Northern Shift Alternative

Summary of Potential Impacts



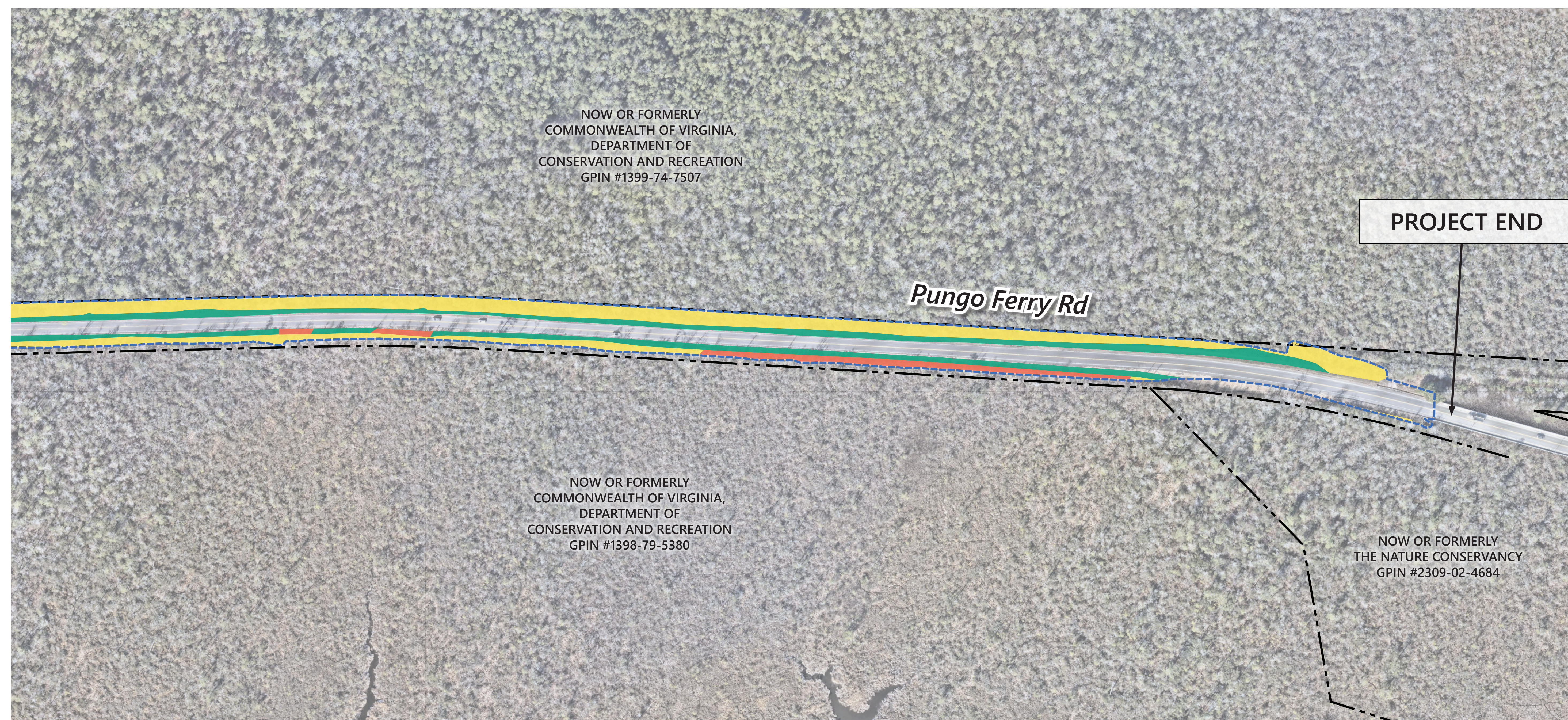
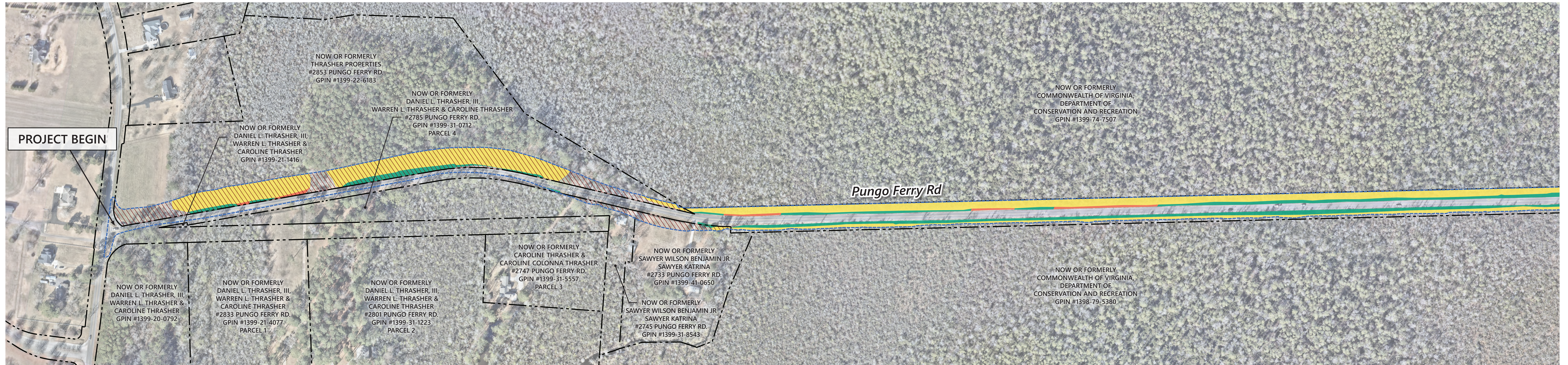
- LEGEND**
- Existing Right-of-Way/Parcel Boundaries
 - - - 32-ft Northern Shift Alternative Limit of Work Boundary
 - - - 9-ft Northern Shift Alternative Limit of Work Boundary
- Right-of-Way Impacts**
- Public
 - Private
- Wetland Impacts**
- Palustrine Emergent (PEM) Wetlands
 - Palustrine Forested (PFO) Wetlands
 - Palustrine Scrub/Shrub (PSS) Wetlands

Resource	Northern Shift Alternative
Right-of-Way Impacts	4.3-7.6 acres
Wetland Impacts	9.28-10.28 acres
Construction Duration	30-36 months
Land Use, Public Lands, and Section 4(f) Properties	<ul style="list-style-type: none"> Land acquisition would be needed from both private landowners and DCR, which is a Section 4(f) property Anticipated ROW acquisition could take approximately 2-4 years
Historic Preservation	Analysis ongoing
Socioeconomics	<ul style="list-style-type: none"> Depending on extent of shift, alternating one-way traffic could be necessary Safety concerns increase with one-way traffic pattern One-way traffic results in increased travel time



Retaining Wall Alternative

Summary of Potential Impacts



- LEGEND**
- Existing Right-of-Way/Parcel Boundaries
 - Retaining Wall Alternative Limit of Work Boundary
 - Right-of-Way Impacts
 - Private
 - Wetland Impacts
 - Palustrine Emergent (PEM) Wetlands
 - Palustrine Forested (PFO) Wetlands
 - Palustrine Scrub/Shrub (PSS) Wetlands

Resource	Retaining Wall Alternative
Right-of-Way Impacts	3.5 acres
Wetland Impacts	6.27 acres
Construction Duration	42 months
Land Use, Public Lands, and Section 4(f) Properties	<ul style="list-style-type: none"> • Land acquisition only needed from private landowners • Anticipated ROW acquisition could take approximately 1 year
Historic Preservation	Analysis ongoing
Socioeconomics	<ul style="list-style-type: none"> • Two-way traffic could be maintained except where new roadway construction connects to existing roadway • Safety concerns decrease with two-way traffic pattern • Two-way traffic maintains travel time

