

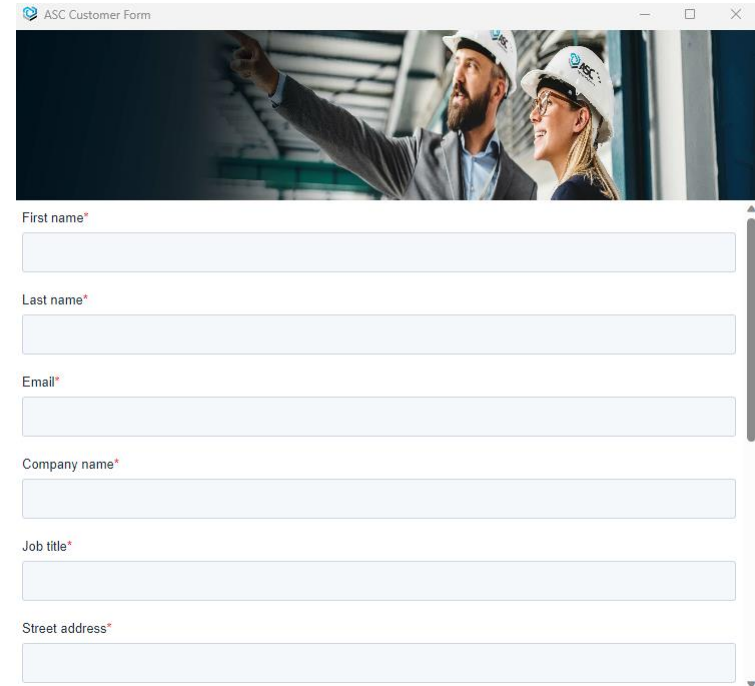
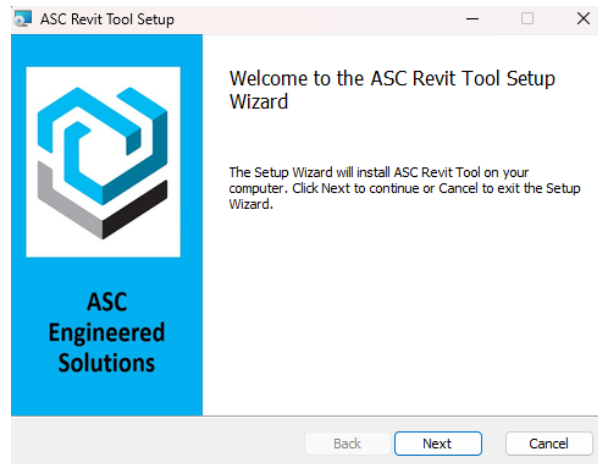
ASC ConnectED™ for Revit™ Plug-in

User Guide



How to download the plugin

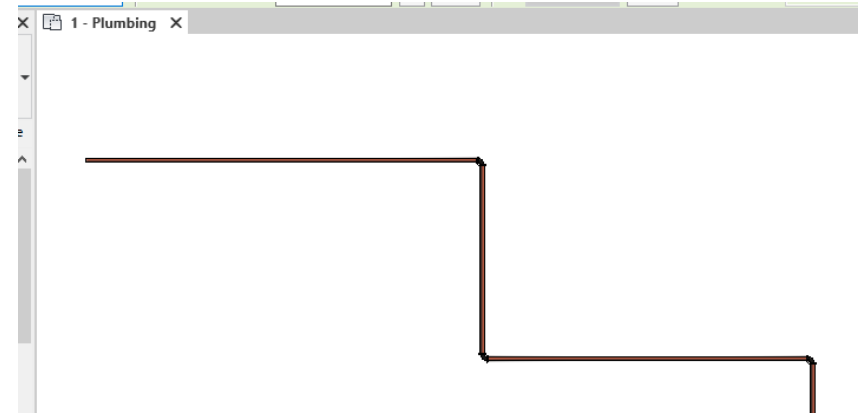
- The Revit Plug-in can be found [Here](#)
- Download and run the install.exe
- Fill out the customer form



The screenshot shows the 'ASC Customer Form' window. It features a header image of two construction professionals in hard hats. Below the image are six text input fields, each with a red asterisk indicating it is required: 'First name*', 'Last name*', 'Email*', 'Company name*', 'Job title*', and 'Street address*'. A vertical scrollbar is visible on the right side of the form.

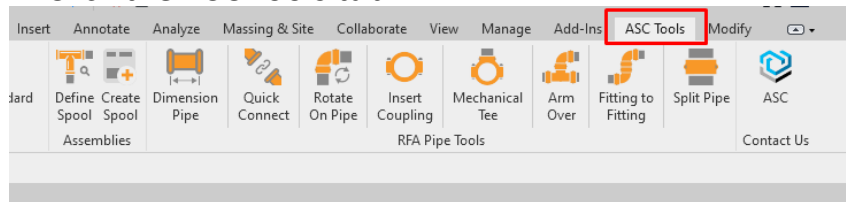
Operations Guide

1. Open the Revit file where you want to spool

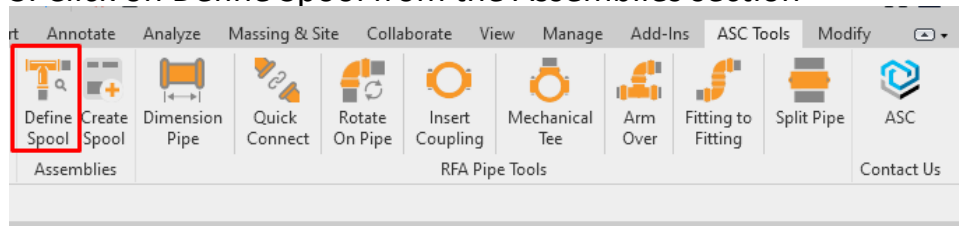


Operations Guide

2. Click the ASC Tools tab

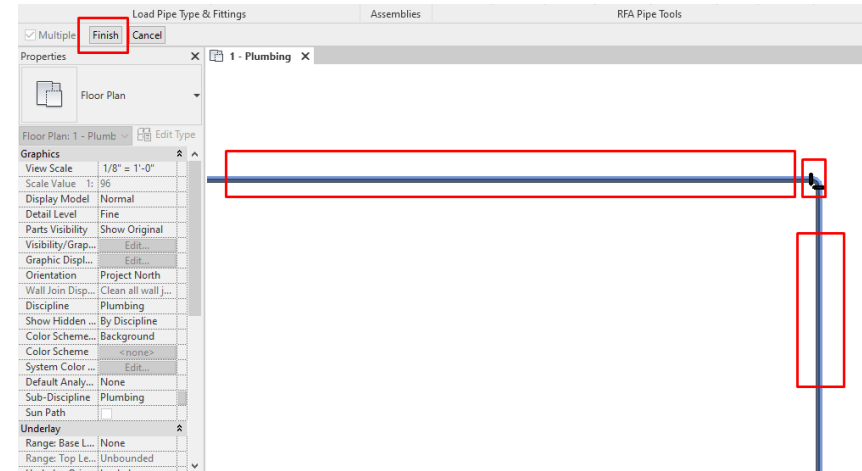


3. Click on Define Spool from the Assemblies section



Operations Guide

4. Hold SHIFT select the 1st element then the last element and click “Finish.”



Operations Guide

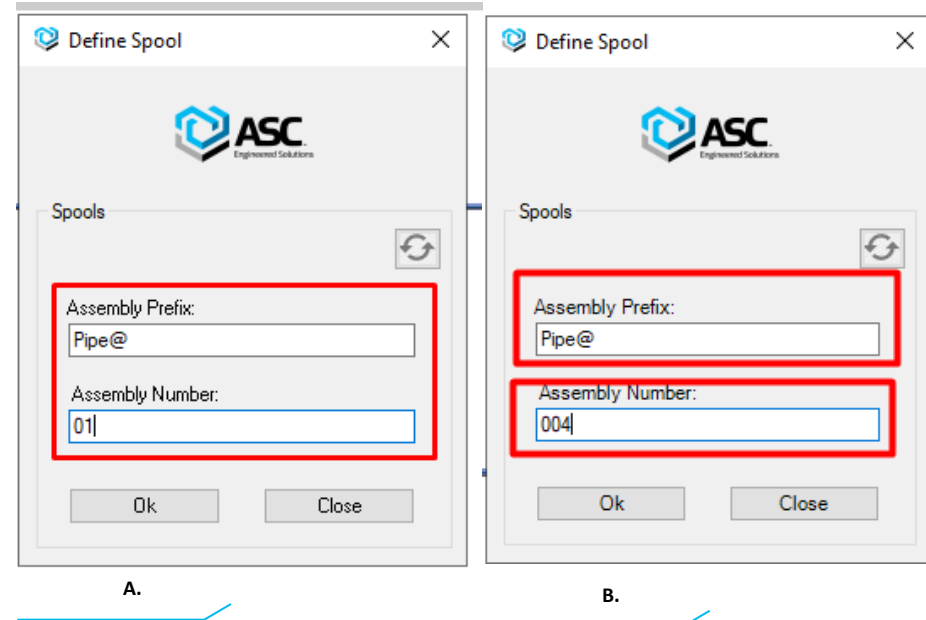
5. The Define Spool window will open and provide the Assembly Prefix and Assembly Number.

- The prefix is case sensitive

A. You can provide letters and special characters in Assembly Prefix

Or

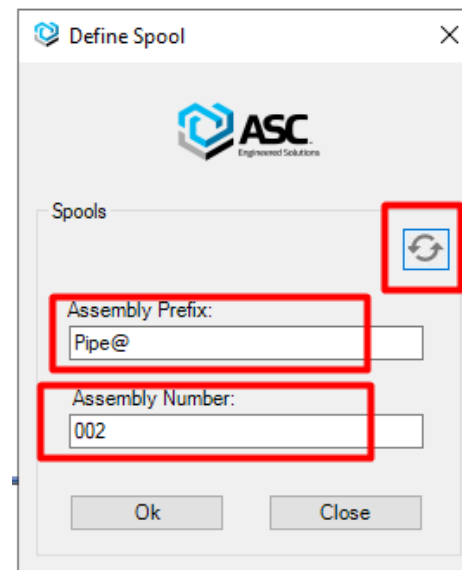
B. You can provide a number in Assembly Prefix that is not as per the sequence



Operations Guide

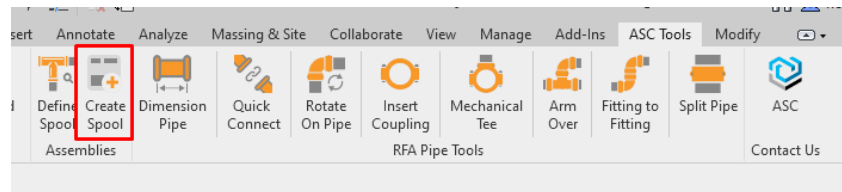
Or

- C. If the user has provided an assembly number that is **not** per the sequence, click the Refresh button to display the Assembly Number as per the sequence.



Operations Guide

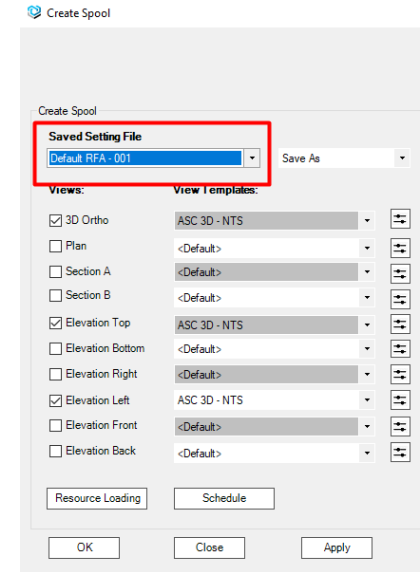
6. Click on “Create Spool” from Assemblies section



Operations Guide

7. The Create Spool Window will be open, select the file type from the drop-down in the saved setting file.

- Default RFA- 001 or Default ITM- 001 are the 2 default options



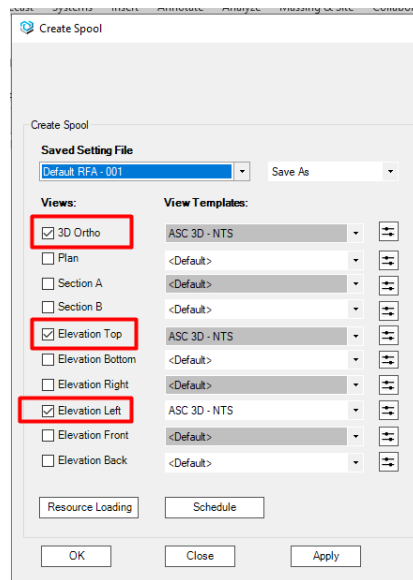
Operations Guide

8. Select the Views:

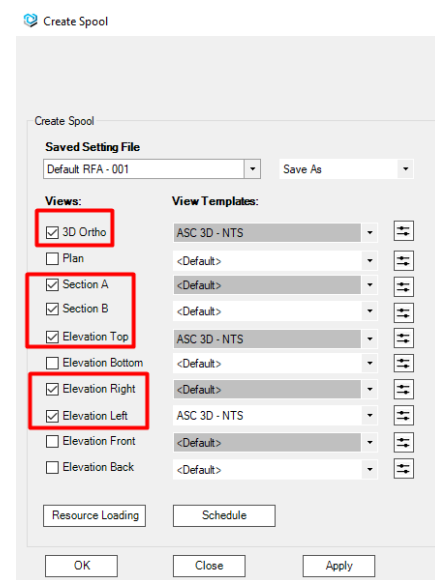
A. 3D Ortho, Elevation Top, Elevation Left, and select View Template as default.

Or

B. Select the Views and Template as per the requirement.



A.

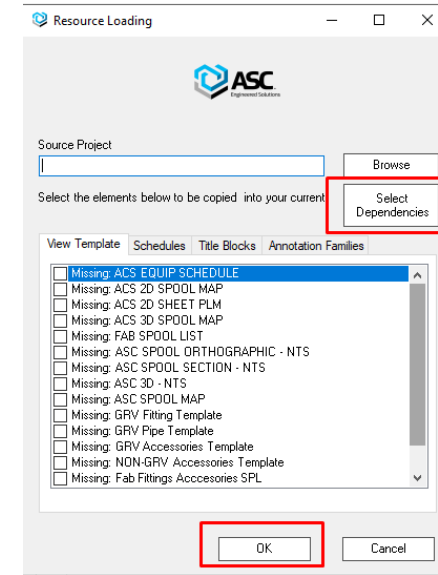


B.

Operations Guide

9. Click on “Select Dependencies,” select your dependencies, and Click OK.

- Depending on the default sheet Dependencies will be added



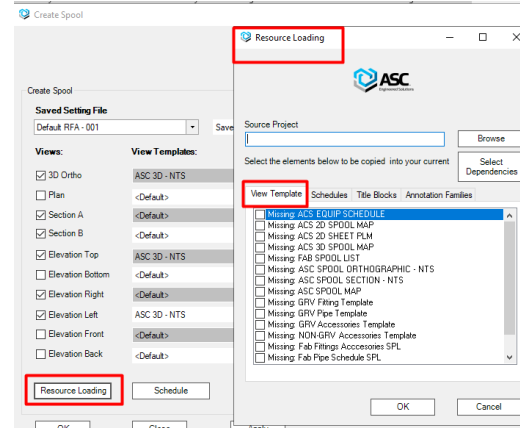
Operations Guide

10. Click on the “Resource Loading” button

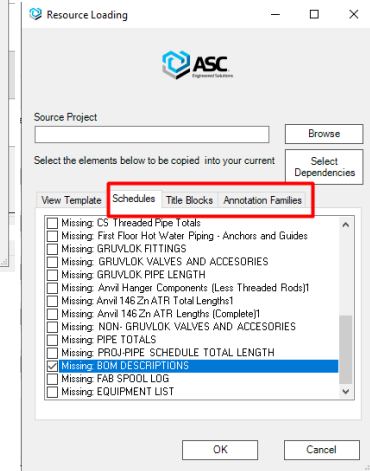
A. Select the View Templates as per the requirement

Or

B. Select the Schedules, Title block, and Annotation families as per the requirement



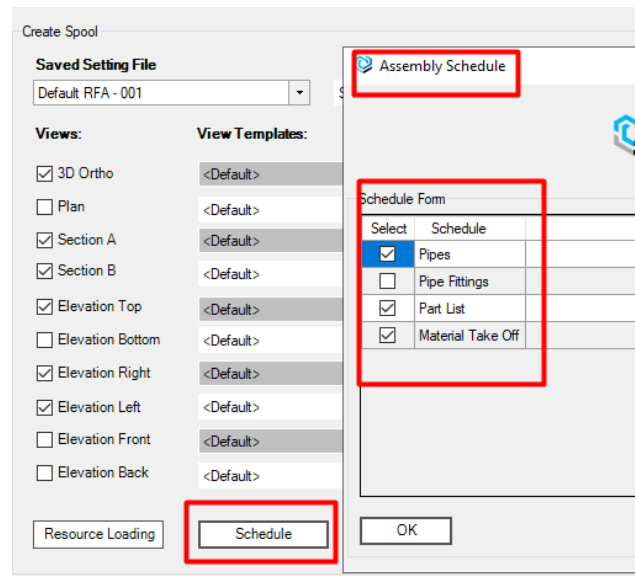
A.



B.

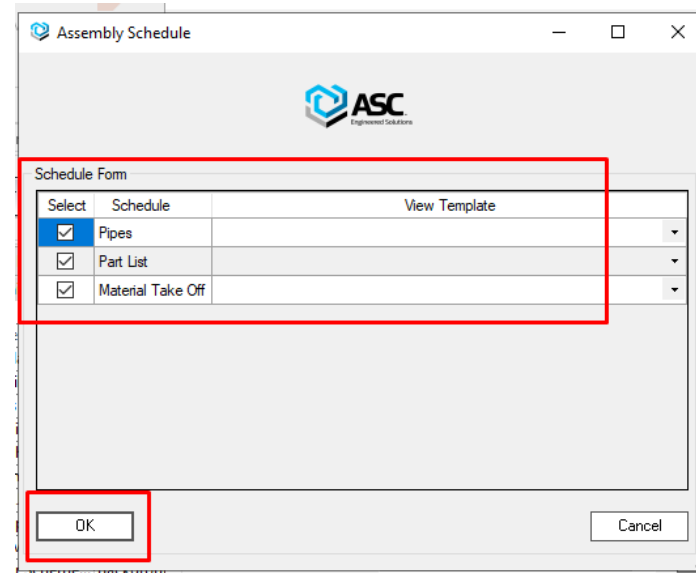
Operations Guide

11. Select the spool, Click on the “Schedule” button, and the Assembly schedule window will open.



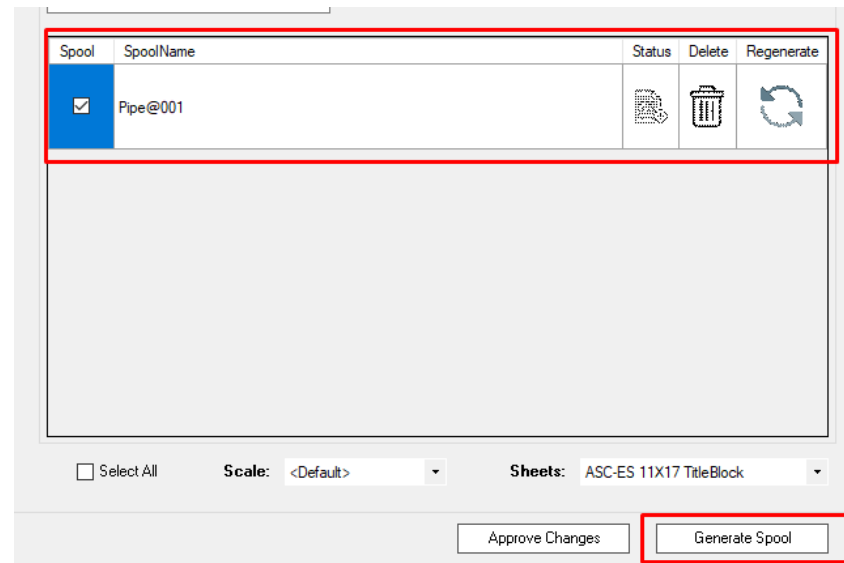
Operations Guide

12. Select the schedule form as per requirement and click OK.



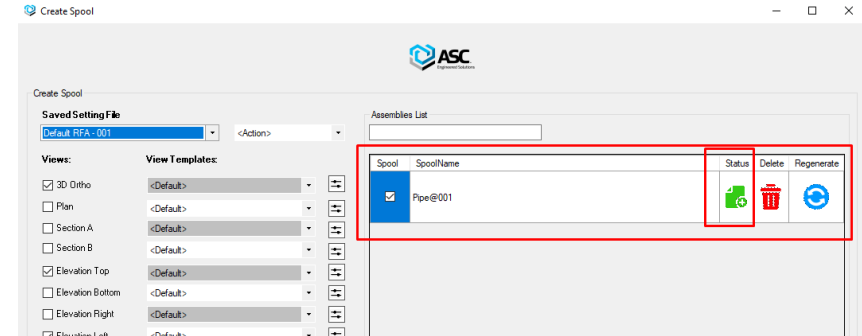
Operations Guide

13. Select the Spool and click Generate Spool



Operations Guide

14. Click Create Spool from Assemblies, Select the Spool, and Click on the Green Color Button from the Status Column. Then, the view sheet will open with 3D ortho, Elevation top, Elevation left



Need assistance?

If you have any questions about the ASC ConnectED™ for Revit™ Plug-in,
please contact our team at connected@asc-es.com

asc-es.com

Building connections that last™

