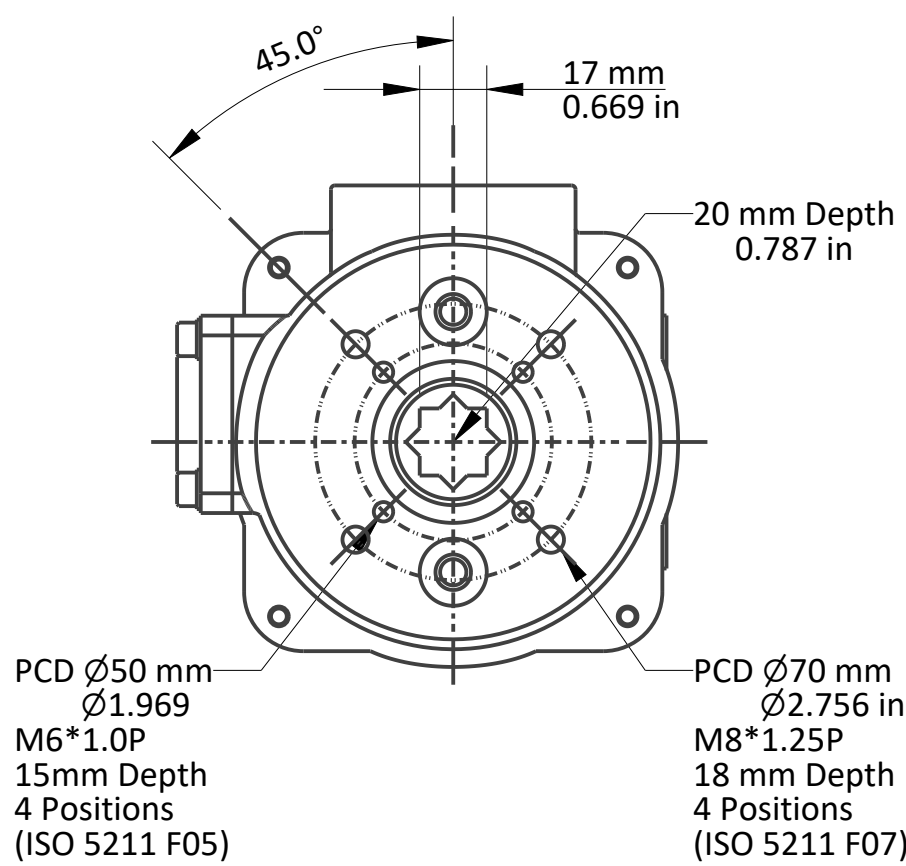
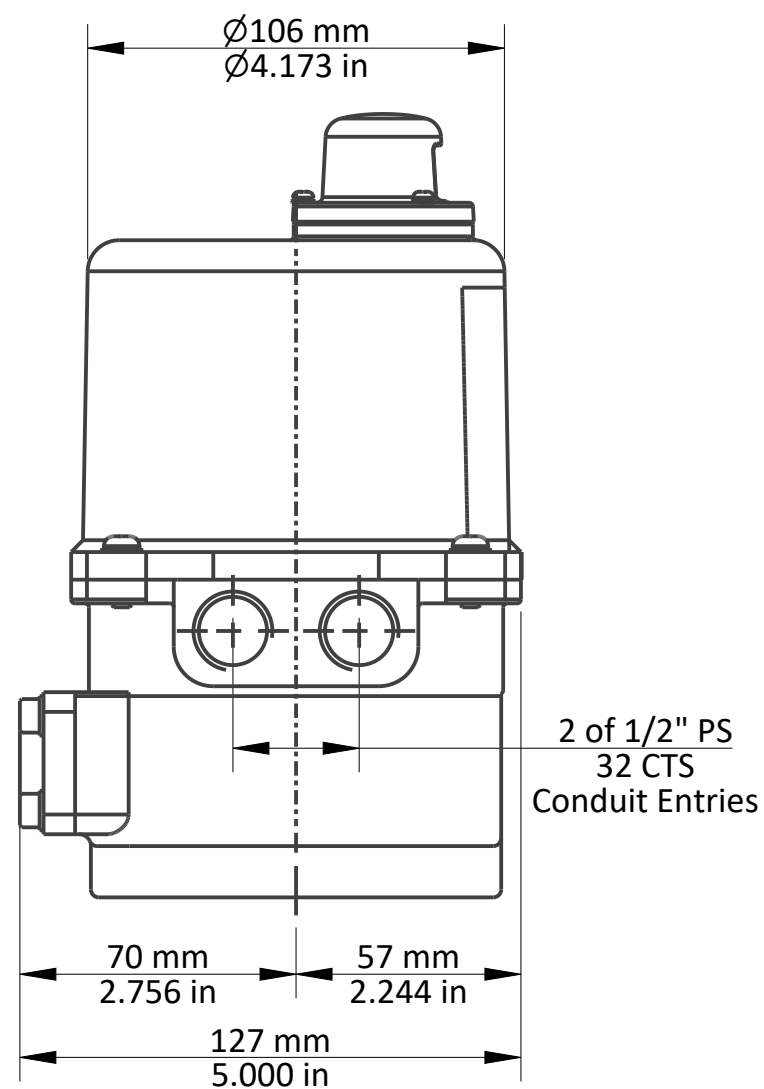
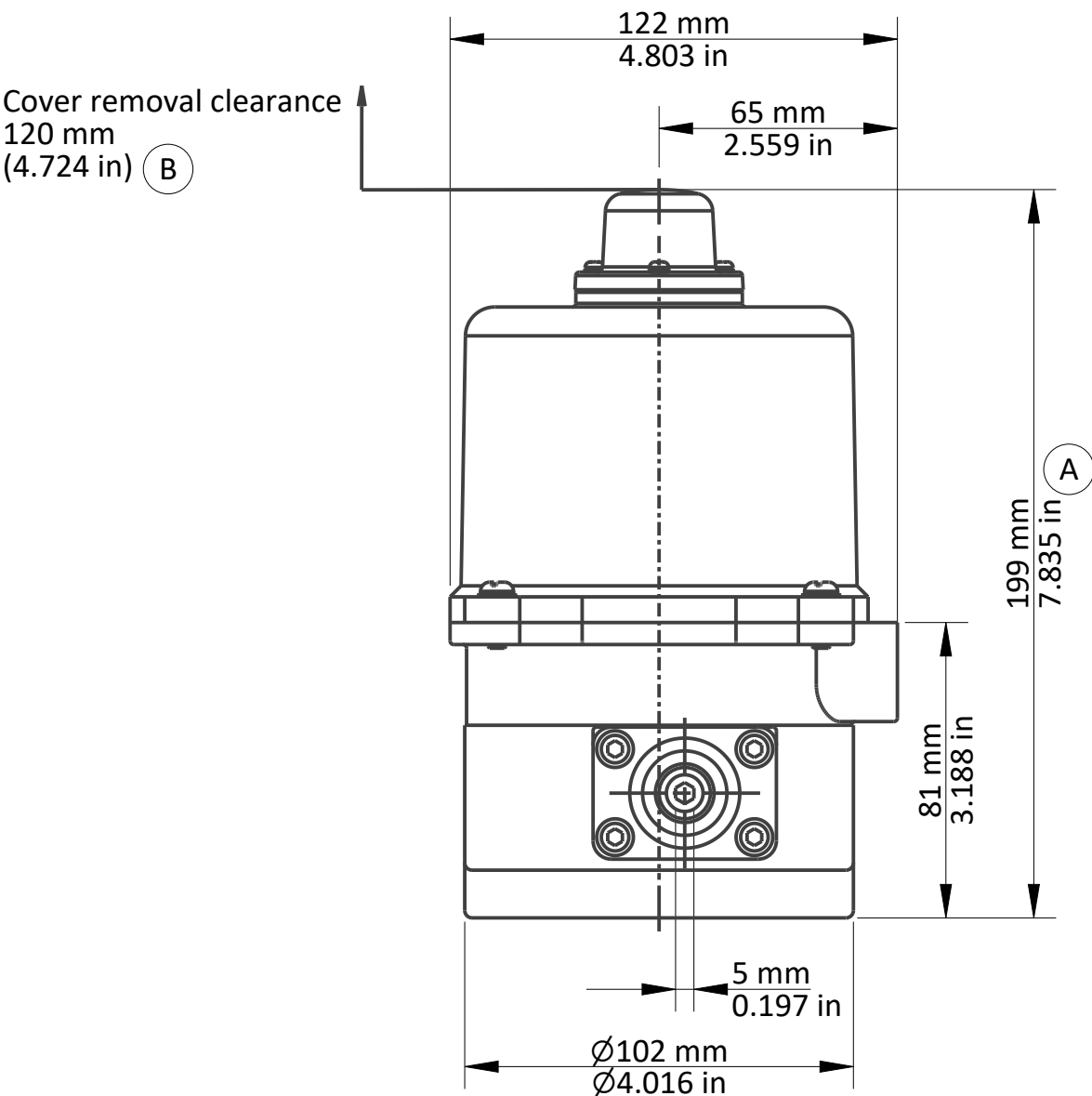




REVISIONS			
REV	DESCRIPTION	DATE	APPV.



- Apply to modulating control models, (A) 232 mm (9.133 in) cover removal clearance, (B) 153 mm (6.023 in)
- No mechanical stops
- Recommended wrench: 5 mm Hex wrench

DISCLAIMER:
ASC Engineered Solutions shall not be liable for losses due to errors or omissions from use of this document. Contact ASC Engineering for technical application questions.

MATERIAL	-----	TOLERANCES ARE AS FOLLOWS UNLESS OTHERWISE SPECIFIED: LINEAR DIMENSIONS: X = ±0.5 X.X = ±0.1 X.XX = ±0.05 ANGULAR DIMENSIONS: ANGLES = ±2° THIRD ANGLE PROJECTION		NAME	DATE	<div><div>Engineered Solutions</div></div>			
FINISH			DRAWN	M. RITZMAN	17-OCT 2025	DESCRIPTION SHARPE VALVES SEA-4 ELECTRIC ACTUATOR			
TREATMENT			CHECKED	C. IANNELLO	17-OCT 2025				
SPECIAL			ENG. APP	M. NILSEN	17-OCT 2025				
			MFG. APP			DRW. SEA-4			
		Q.A.							
METRIC/INCH			SHEET 1 OF 1		SIZE	A3	SCALE:		REVISION
UNLESS OTHERWISE SPECIFIED, DIMENSIONS AND TOLERANCES ARE IN MILIMETERS AND ANGLES IN DEGREES.			PART: SEA-4 ACTUATOR				WEIGHT:		00