

Low Profile Sturdy Bracket Fig. FH110

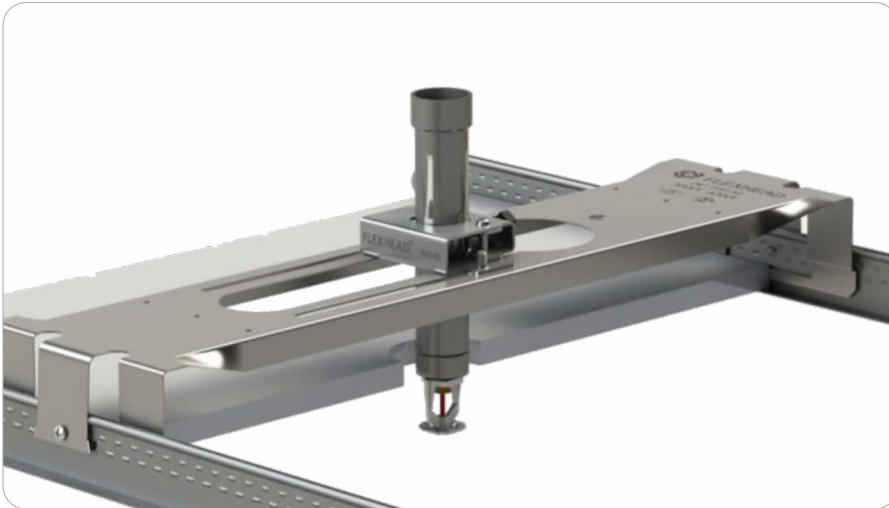


Fig. FH110 cULus & FM Listed Hoses

Hose Figure #	cULus Listed	FM Approved	
	24"	24"	48"
FH206 Series	✓	✓	✓
FH209 Series	✓	✓	✓
FH222 Series	✓	✓	✓
FH224 Series	✓	✓	✓
FH225 Series	✓	✓	✓
FH226 Series	✓	✓	✓
FH306 Series	✓	✓	✓
FH325 Series	✓	✓	✓
FH326 Series	✓	✓	✓

Note: Brackets are only UL Listed and FM Approved when installed with FlexHead hoses listed above.

Product Specifications

Bracket Length

24 in 48 in

Material

Carbon Steel – Galvanized

Applications

- Suspended Ceilings per ASTM C635 & C636
- Wood Framing – Gypsum or Dry Wall
- Steel Framing – Gypsum or Dry Wall

Features

- Open hub design for ease of installation.
- Bracket hub set for Center-of-Tile installation out of the box
- Wide body prevents rotation and ensures stability
- Bracket hub infinitely adjustable between quarter and mid points

Ordering

- Specify figure number, description, & length

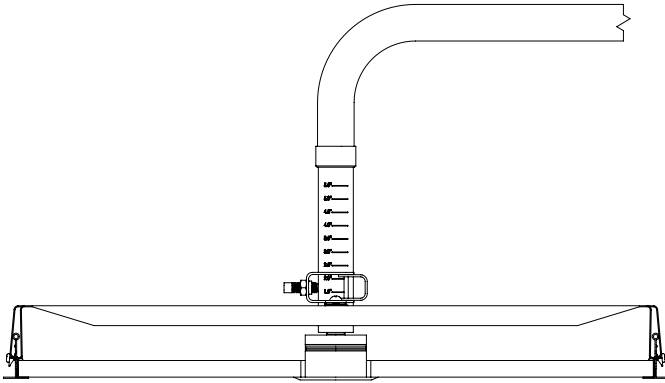


PROJECT INFORMATION	APPROVAL STAMP
Project:	Approved
Address:	Approved as noted
Contractor:	Not approved
Engineer:	Remarks:
Submittal Date:	
Notes 1:	
Notes 2:	

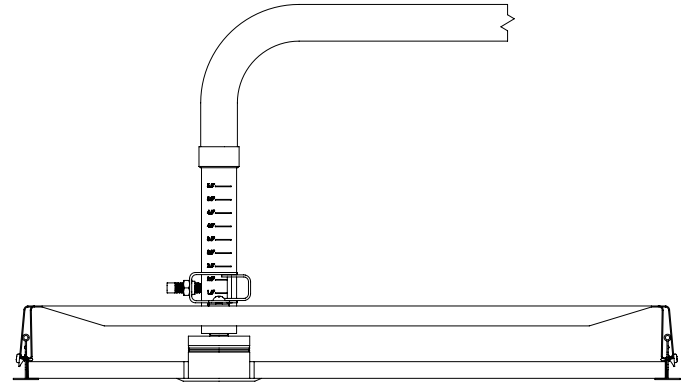
Low Profile Sturdy Bracket Fig. FH110

Applications

Suspended Ceilings

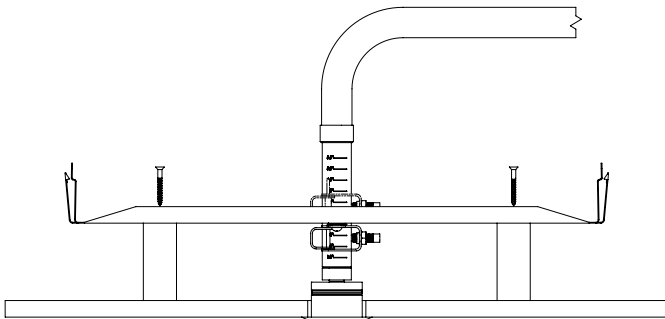


Mid-Point Installation 24", 48" Brackets

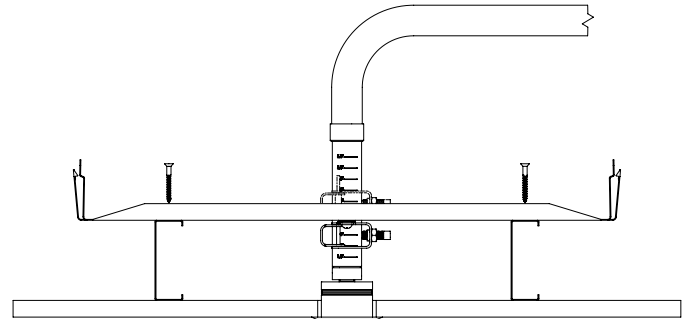


Quarter Point Installation 24", 48" Brackets

Wood Framing & Steel Framing – Gypsum or Dry Wall – Ceiling or Sidewall



16" On-Center Wood Frame Installation 24" Brackets



16" On-Center Steel Frame Installation 24" Brackets

Low Profile Sturdy Bracket
Fig. FH110

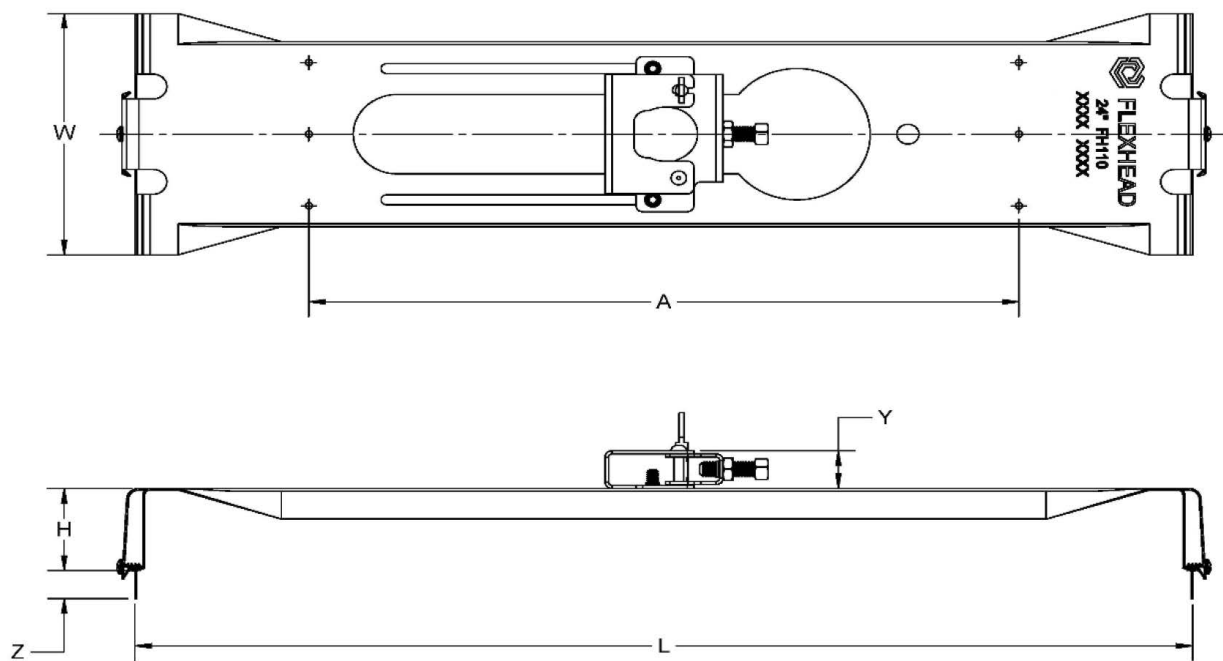


Fig. FH110 Dimensions & Model Number

L	W	H	A	Y	Z
in/mm	in/mm	in/mm	in/mm	in/mm	in/mm
24 609.6	6.00 152.4	2.00 50.8	16 406.4	0.95 2.00	0.74 18.8
48 1219.0	6.00 152.4	2.00 50.8	-	0.95 2.00	0.74 18.8

Low Profile Sturdy Bracket Fig. FH110

Installation Instructions

Connection to Suspended Ceiling T-bar

- 1 Determine the location of the sprinkler above the suspended ceiling tile.
Position the bracket legs and hub in the desired location on suspended ceiling T-bar.
Note: The hub and self-drilling mounting screws are in the true center of the bracket.
- 2 Install one bracket leg at a time, applying a downward pressure on the bracket leg and T-bar.
- 3 Install the self-drilling mounting screw into the suspended ceiling T-bar using the tamperproof head drive provided. Repeat on both sides of the bracket.



Figure 1.

Connection to Wood Frames or Steel Studs in Gypsum or Drywall

- 1 Determine the location of the sprinkler between the wood frames or steel studs.
- 2 Adjust the position of the bracket hub to the desired position if necessary. The hub may be placed on the top or bottom of the bracket body.
- 3 Install two (2) screws into each structural stud (wood or steel). Four (4) screws total per bracket.
 - a Wood Frames: ¼-20 Self Tapping Screw
 - b Steel Frames: ¼-20 Self Tapping Screw

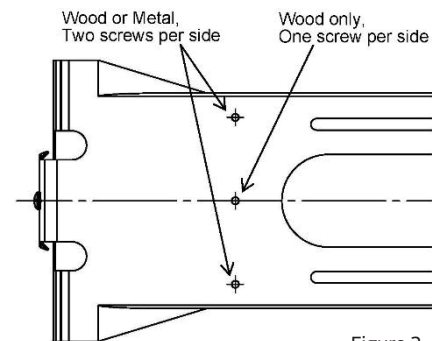


Figure 2.

Connection to the Flexible Sprinkler Hose

- 1 Open the hinge door on the bracket hub by rotating the locking shaft ¼ turn.
- 2 Slide the flexible hose drop into the hub.
- 3 Close the hinge door and re-lock the locking shaft with a ¼ turn.
- 4 Ensure the flexible hose drop is straight and not applying a substantial moment on the bracket which may cause sprinkler misalignment.
- 5 Adjust the flexible hose drop to the desired height and tighten the set screw hand-tight plus a ¾ turn (130 in-lbs).
- 6 Position the locking nut against the hub and tighten (192-216 in-lbs).

Adjusting the Bracket Hub

- 1 Loosen the mounting screws holding the hub to the bracket body.
- 2 Slide the hub along the bracket body to the desired position and tighten the mounting screws.
Tighten the mounting screws until flanged head is flush against bracket body plus ¼ turn (72-96 in-lbs)

General Notes

Installation & maintenance of FlexHead products shall be in accordance with applicable local and federal codes (E.g. NFPA 13, NFPA 13R, NFPA 13D, NFPA 25, FM Datasheets, IBC).