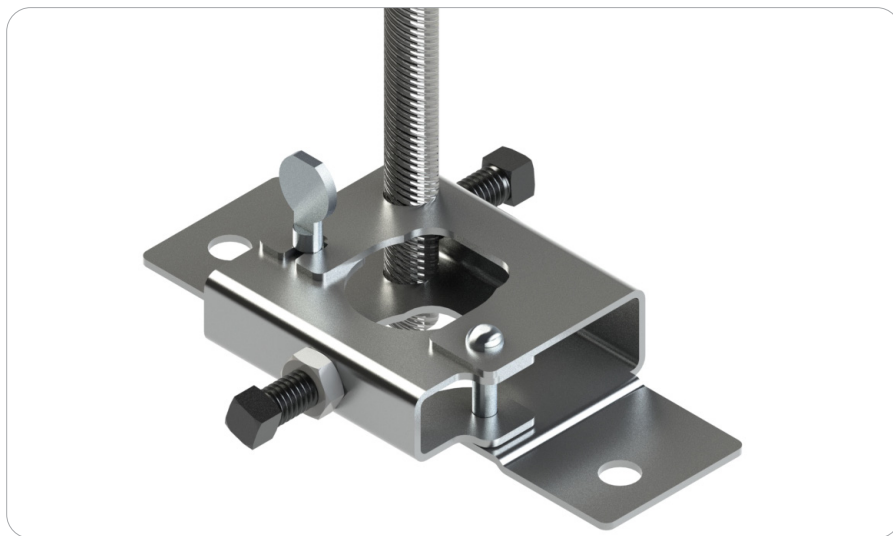


## Universal Open Hub Fig. FH101



### Product Specifications

#### Material

Carbon Steel – Galvanized

#### Applications

- Freezers & Insulated Metal Panels
- Institutional
- $\frac{3}{8}$ " Threaded Rod – 4ft Length Max
- $\frac{1}{2}$ " Threaded Rod – 6ft Length Max
  - Threaded Rod FM only
- Temporary Fire Protection

#### Features

- Open hub design for ease of installation
- Direct connection to structure

#### Ordering

Specify figure number, description, & length

Fig. FH101 cULus & FM Listed Hoses

Hose Figure #	cULus Listed	FM Approved
FH206 Series	✓	✓
FH209 Series	✓	✓
FH222 Series	✓	✓
FH224 Series	✓	✓
FH225 Series	✓	✓
FH226 Series	✓	✓
FH306 Series	✓	✓
FH325 Series	✓	✓
FH326 Series	✓	✓

**Note:** Brackets are only UL Listed and FM Approved when installed with FlexHead brackets listed above.

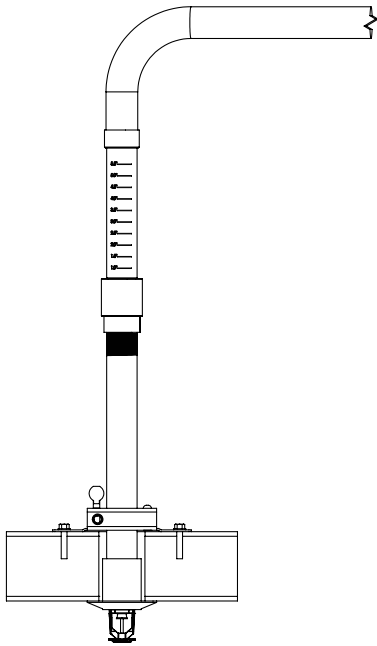


PROJECT INFORMATION	APPROVAL STAMP
Project:	Approved
Address:	Approved as noted
Contractor:	Not approved
Engineer:	Remarks:
Submittal Date:	
Notes 1:	
Notes 2:	

## Universal Open Hub Fig. FH101

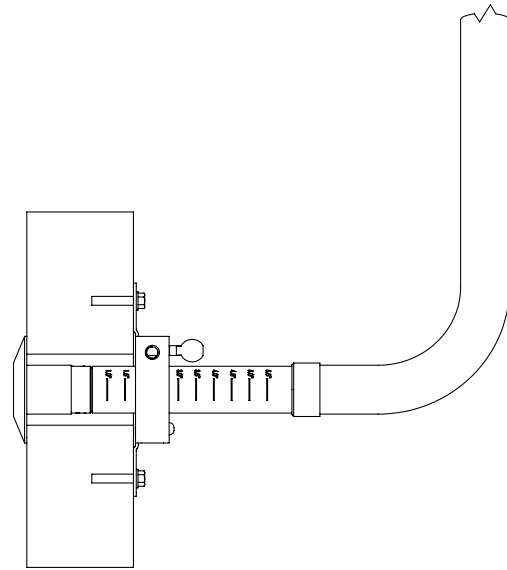
### Applications

#### Freezer & Insulated Metal Panel



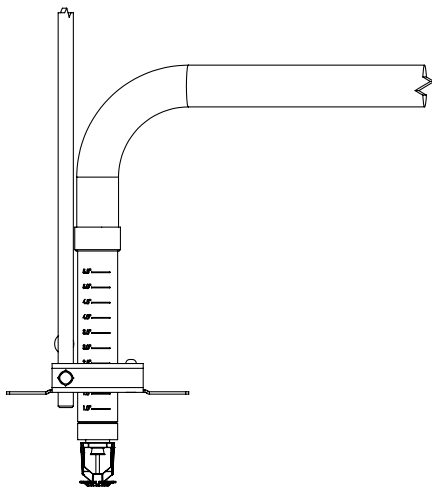
Installation with two (2) FAB-LOK Fasteners  
(FAB-LOK Fasteners Sold Separately)

#### Institutional – Ceiling or Sidewall



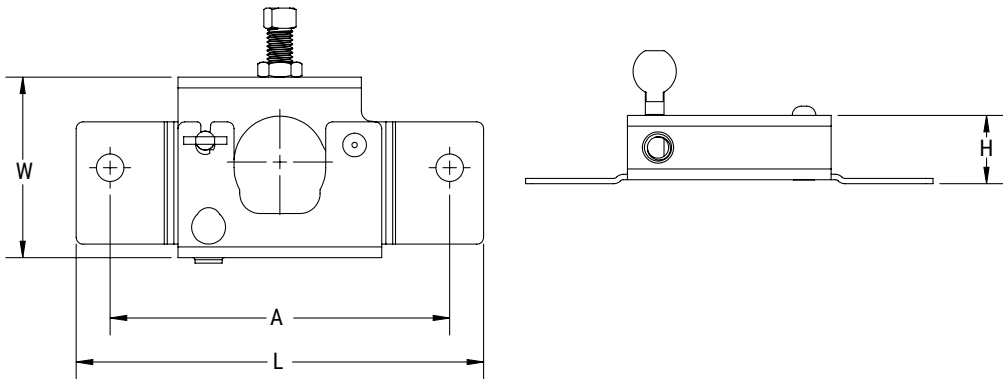
Shown with FH209– Institutional Hose

#### Threaded Rod



Applications with  $\frac{3}{8}$ " &  $\frac{1}{2}$ " Threaded Rod  
(FM Approved Only, Threaded Rod Sold Separately)

Universal Open Hub  
**Fig. FH101**



**Fig. BKT-FH101 Dimensions**

<b>L</b>	<b>W</b>	<b>H</b>	<b>A</b>
in/mm	in/mm	in/mm	in/mm
6.00 152.4	2.75 69.9	1.01 25.6	5.00 127.0

## Universal Open Hub Fig. FH101

### Installation Instructions

#### Connection to the Flexible Sprinkler Hose

- 1 Open the hinge door on the bracket hub by rotating the locking shaft ¼ turn.
- 2 Slide the flexible hose drop into the hub.
- 3 Close the hinge door and re-lock the locking shaft with a ¼ turn.
- 4 Ensure the flexible hose drop is straight and not applying a substantial moment on the bracket which may cause sprinkler misalignment.
- 5 Adjust the flexible hose drop to the desired height and tighten the set screw hand-tight plus a ¾ turn (130–140 in-lbs).
- 6 Position the locking nut against the hub and tighten (192–216 in-lbs).

#### Connection to Freezers and Insulated Metal Panels

- 1 Position the center of the hub over the sprinkler hole and ensure the sprinkler is in the desired position.
- 2 Install fasteners into the mounting holes. Fastener options listed below.
  - a Two (2) FAB-LOK EZJ 120 -- 5/16" x 1.612" fasteners (sold separately)
  - b Two (2) ¼" or 5/16" approved fasteners

#### Institutional, Sidewall, & Ceiling Installation

- 1 Position the center of the hub over the sprinkler hole and ensure the sprinkler is in the desired position.
- 2 Install fasteners into the mounting holes. Fastener options listed below.
  - a Two (2) FAB-LOK EZJ 120 -- 5/16" x 1.612" fasteners (sold separately)
  - b Two (2) ¼" or 5/16" approved fasteners

#### Connection to Threaded Rod (FM approved only)

- 1 Insert the threaded rod (not included) into the 3/8" or 1/2" mounting hole.
- 2 Move the bracket to the correct elevation.
- 3 Tighten the set screw hand tight plus a ¾ turn (130–140 in-lbs).
- 4 **Note:** The set screw may be moved between the 3/8" and 1/2" threaded rod mounting hole.

#### General Notes

Installation & maintenance of FlexHead products shall be in accordance with applicable local and federal codes (E.g. NFPA 13, NFPA 13R, NFPA 13D, NFPA 25, FM Datasheets, IBC).