

879 Seventh Ave



MIDTOWN - 7TH AVE | CORNER ACROSS FR CARNEGIE HALL

RETAIL SPACE FOR LEASE
± 1300 RSF
Corner | Ground Floor
NEW YORK, NEW YORK

New to Market

Directly Across 56th St from Carnegie Hall. Former Metro Cafe.
± 478 SF Lower Level



Unit: **Ground Floor Corner**
RSF: **1300 RSF**
Front: **19' on Seventh Ave**
Avail: **Immed**
Price: **\$357/SF**

Scott Klatsky
(212)206-6155
sklatsky@timeequities.com



NYC RETAIL
BY TIME EQUITIES INC.

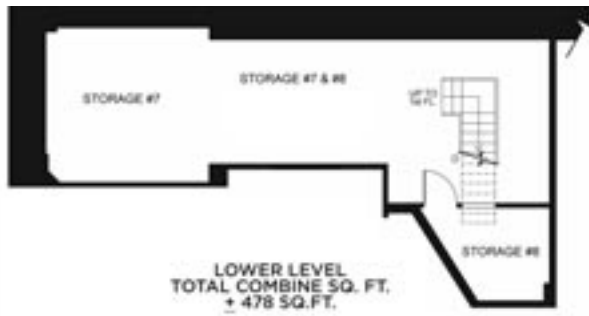
Scott Schneidman
(212)206-6163
sschneidman@timeequities.com

879 Seventh Ave

1300 RSF
Ground
Floor



478 RSF
Lower
Level



Click on Plan
For Additional Information,
Photos, Videos...

MIDTOWN - 7TH AVE | CORNER ACROSS FR CARNEGIE HALL

RETAIL SPACE FOR LEASE
+ 1300 RSF
Corner | Ground Floor
NEW YORK, NEW YORK



No warranty, or representation is made as to the accuracy of the above information and same is submitted subject to errors, omissions, change of price, rental or other conditions, prior lease or withdrawal without notice, and to any special listing conditions, including the rate and manner of payment of commissions for particular offering, the terms of which are available to duly licensed brokers. This listing is subject to the aforesaid conditions and is not to be deemed an employment nor a binding contract of any kind unless or until our brokerage agreement is fully executed.

Scott Klatsky
(212)206-6155
sklatsky@timeequities.com



NYC RETAIL
BY TIME EQUITIES INC.

Scott Schneidman
(212)206-6163
sschneidman@timeequities.com