

47 EAST 66TH ST



UPPER EAST SIDE | OFF MADISON AVE

RETAIL SPACE FOR LEASE

1,300 RSF
Ground Floor

NEW YORK, NEW YORK

Amid a Who's Who of Designer Names
Just Steps off Madison Ave

Unit: **Ground Floor**

RSF: **1,300**

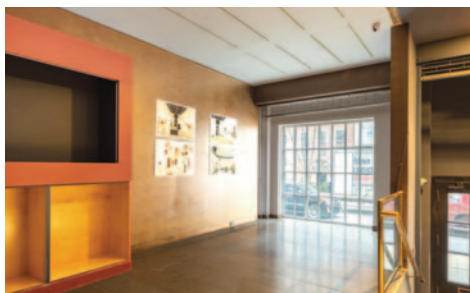
Frontage: **16' 5" on E. 66th just of Madison**

Avail: **Immediate**

Price: **\$300/SF**

Former Gallery
Upscale Upper East Side Condo Building

Ideal for Gallery, Boutique,
Medical Usage okay.



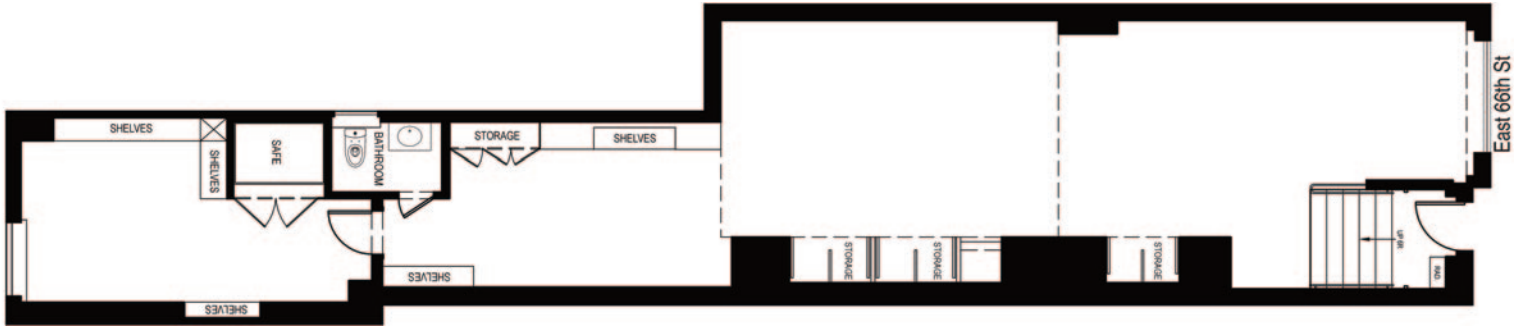
Scott Klatsky
(212)206-6155
sklatsky@timeequities.com



NYC RETAIL
BY TIME EQUITIES INC.

Scott Schneidman
(212)206-6163
sschneidman@timeequities.com

47 EAST 66TH ST



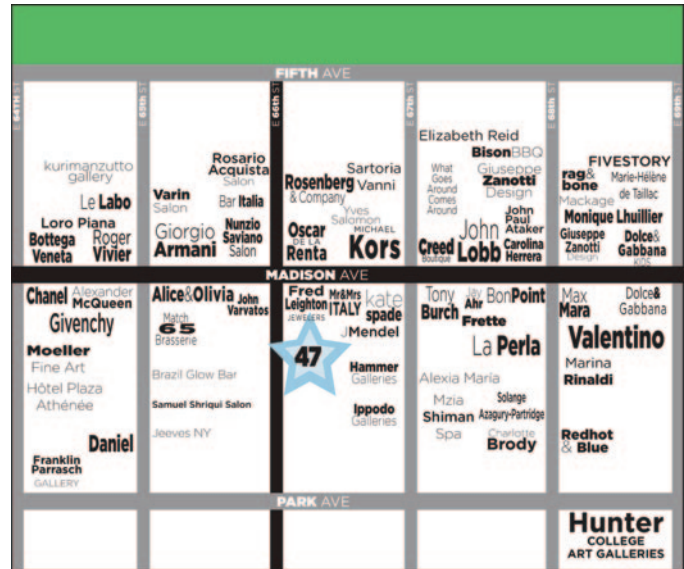
Click on Plan
For Additional Information,
Photos, Videos...

UPPER EAST SIDE | OFF MADISON AVE

RETAIL SPACE FOR LEASE

1,300 RSF
Ground
Floor

NEW YORK, NEW YORK



No warranty, or representation is made as to the accuracy of the above information and same is submitted subject to errors, omissions, change of price, rental or other conditions, prior lease or withdrawal without notice, and to any special listing conditions, including the rate and manner of payment of commissions for particular offering, the terms of which are available to duly licensed brokers. This listing is subject to the aforesaid conditions and is not to be deemed an employment nor a binding contract of any kind unless or until our brokerage agreement is fully executed.

Scott Klatsky
(212)206-6155
sklatsky@timeequities.com



NYC RETAIL
BY TIME EQUITIES INC.

Scott Schneidman
(212)206-6163
sschneidman@timeequities.com