

323 West 11th St



WEST VILLAGE | BETWEEN GREENWICH & WASHINGTON STS

RETAIL SPACE FOR LEASE

+ 650 RSF

Ground Floor

NEW YORK, NEW YORK

New to Market

Former Gallery Space

Unit: **Ground Floor**

RSF: **650 RSF**

Avail: **4/1/2024**

Price: **\$8,000 / Month**

Ceiling: **approximately 14'**

Frontage: **approximately 11'**

Scott Klatsky

(212)206-6155

sklatsky@timeequities.com



NYC RETAIL
BY TIME EQUITIES INC

Scott Schneidman

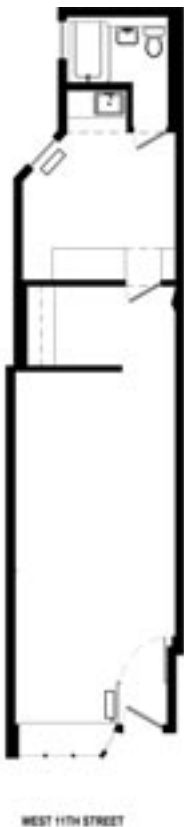
(212)206-6163

sschneidman@timeequities.com

55 FIFTH AVE | 15TH FLOOR | NEW YORK, NY | 10003-4398 | 212-206-6000 | TIMEEQUITIES.COM

LICENSED REAL ESTATE BROKER

323 West 11th St



650 RSF
Ground
Floor

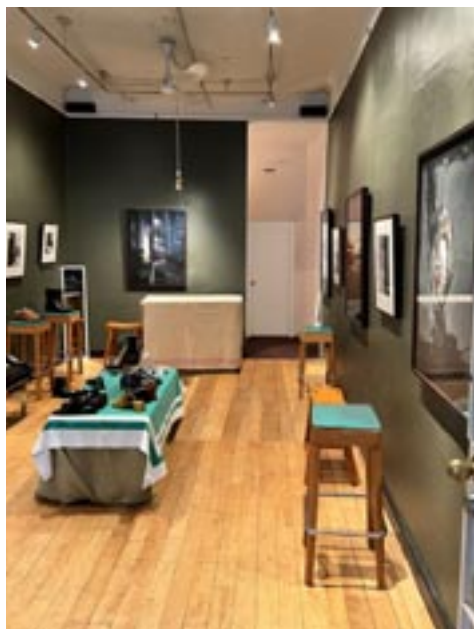
WEST VILLAGE | BETWEEN GREENWICH & WASHINGTON STS

RETAIL SPACE FOR LEASE

± 650 RSF

Ground Floor

NEW YORK, NEW YORK



No warranty, or representation is made as to the accuracy of the above information and same is submitted subject to errors, omissions, change of price, rental or other conditions, prior lease or withdrawal without notice, and to any special listing conditions, including the rate and manner of payment of commissions for particular offering, the terms of which are available to duly licensed brokers. This listing is subject to the aforesaid conditions and is not to be deemed an employment nor a binding contract of any kind unless or until our brokerage agreement is fully executed.

Scott Klatsky

(212)206-6155

sklatsky@timeequities.com



NYC RETAIL
BY TIME EQUITIES INC

Scott Schneidman

(212)206-6163

sschneidman@timeequities.com

55 FIFTH AVE | 15TH FLOOR | NEW YORK, NY | 10003-4398 | 212-206-6000 | TIMEEQUITIES.COM

LICENSED REAL ESTATE BROKER