

# 240 SULLIVAN



## GREENWICH VILLAGE | WASHINGTON SQUARE PARK

RETAIL SPACE FOR LEASE

**900 RSF**  
**Ground**  
**Floor**  
**Corner**

NEW YORK, NEW YORK

Highly Visible Ground Floor Retail Corner ideally located in **Greenwich Village**. Close to **NYU - School of Law** and **Washington Square Park** and a **Who's Who of Tech/Internet Firms**.

Unit: **Ground Floor**  
RSF: **900 RSF**  
LL: **900 RSF**  
Frontage: Sullivan **31'6"** W 3rd **27' 10"**  
Avail: **11/1/20**  
Price: **\$15,000/Mo**

Food Permitted  
Vented

**Scott Klatsky**  
(212)206-6155  
[sklatsky@timeequities.com](mailto:sklatsky@timeequities.com)



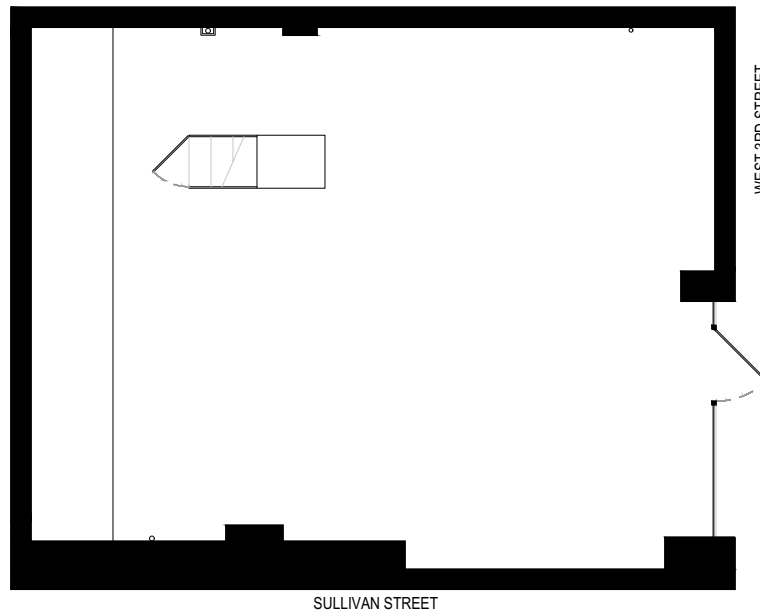
**NYC RETAIL**  
BY TIME EQUITIES INC.

**Scott Schneidman**  
(212)206-6163  
[sschneidman@timeequities.com](mailto:sschneidman@timeequities.com)

# 240 SULLIVAN

900 RSF  
Ground  
Floor

900 RSF  
Lower  
Level



## GREENWICH VILLAGE | NYU SCHOOL OF LAW

RETAIL SPACE FOR LEASE

900 RSF  
Ground  
Floor  
Corner

NEW YORK, NEW YORK



**Scott Klatsky**  
(212)206-6155  
[sklatsky@timeequities.com](mailto:sklatsky@timeequities.com)



**NYC RETAIL**  
BY TIME EQUITIES INC.

**Scott Schneidman**  
(212)206-6163  
[sschneidman@timeequities.com](mailto:sschneidman@timeequities.com)