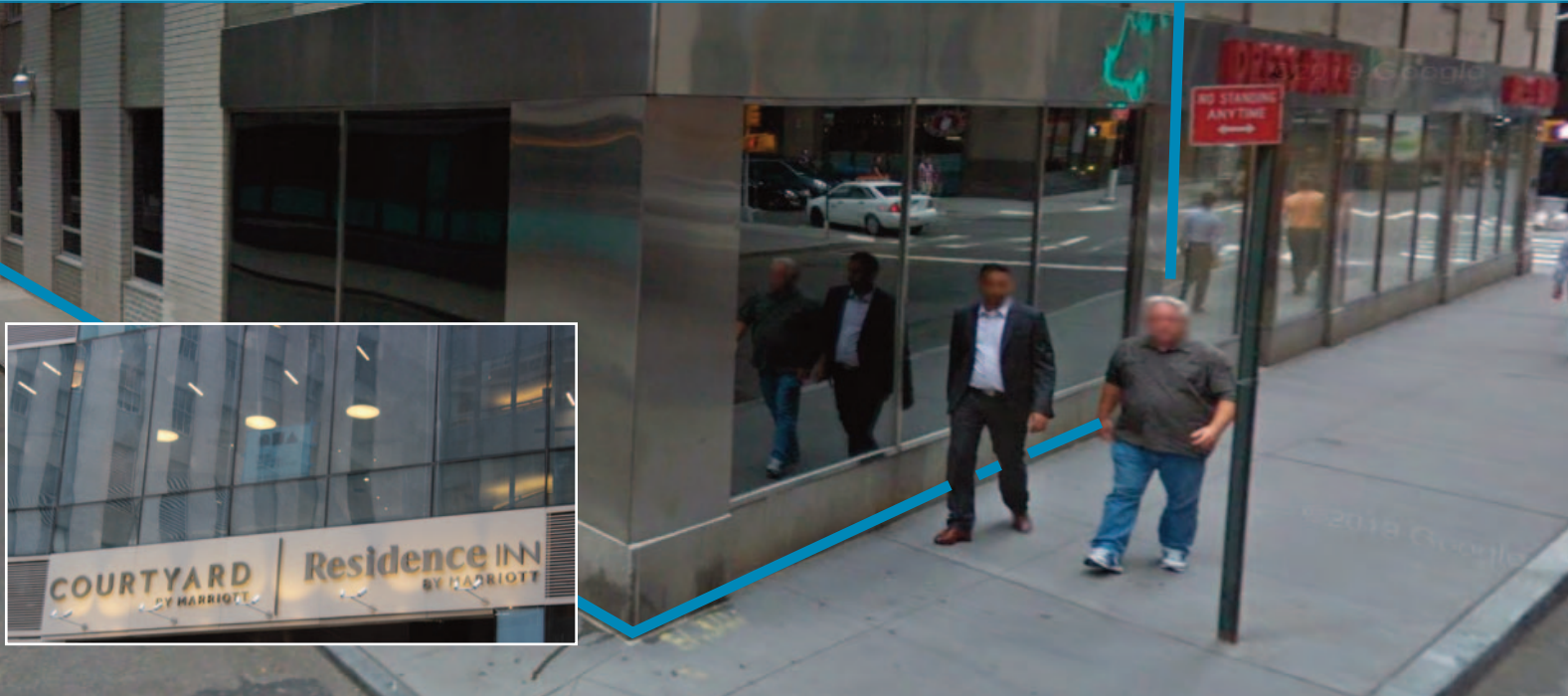


# 125 MAIDEN LA



## WATER STREET PLAZA | DOWNTOWN

RETAIL SPACE FOR LEASE

**1,745 RSF**  
**Ground**  
**Floor**  
**Corner**

NEW YORK, NEW YORK

Ideal Food Location on

Downtown's Prime Corridor

Unit: **Ground Floor - B**

RSF: **1,745**

Frontage: **25' on Pearl St**  
**86' on Fletcher St**

Avail: **Immediate**

Price: **\$150/SF**

### **New Hotels coming soon**

Dual Marriott Hotels With 320 Rooms  
Opening Soon on Pearl St off Fletcher

Easily Vented at Rear of Building



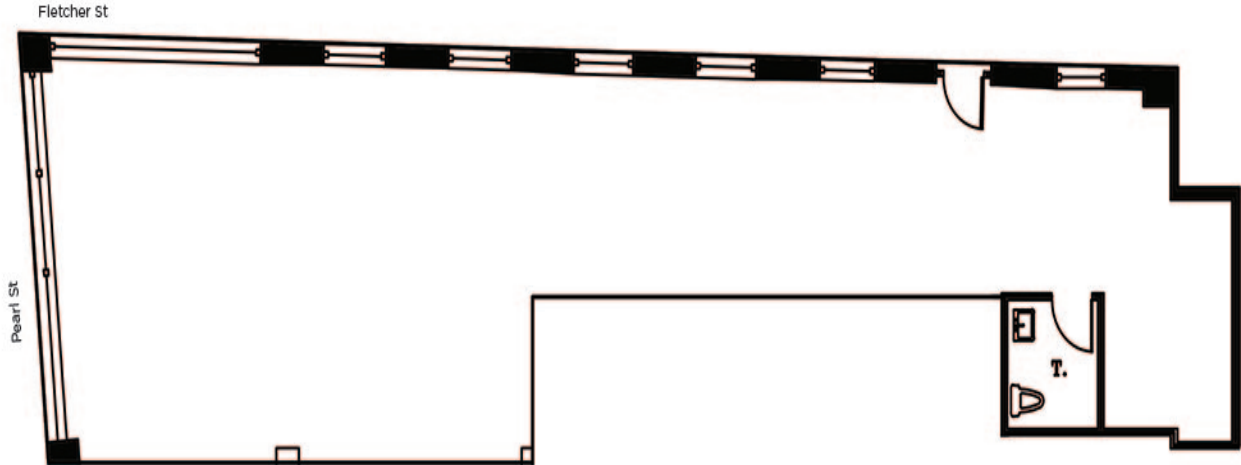
**Scott Klatsky**  
(212)206-6155  
[sklatsky@timeequities.com](mailto:sklatsky@timeequities.com)



**NYC RETAIL**  
BY TIME EQUITIES INC.

**Scott Schneidman**  
(212)206-6163  
[sschneidman@timeequities.com](mailto:sschneidman@timeequities.com)

# 125 MAIDEN LA



Click on Plan  
For Additional Information,  
Photos, Videos...

## WATER STREET PLAZA | DOWNTOWN

RETAIL SPACE FOR LEASE

1,745 RSF  
Ground  
Floor  
Corner

NEW YORK, NEW YORK



Coming Soon:  
(2) Hotels on Pearl St near Fletcher St



No warranty, or representation is made as to the accuracy of the above information and same is submitted subject to errors, omissions, change of price, rental or other conditions, prior lease or withdrawal without notice, and to any special listing conditions, including the rate and manner of payment of commissions for particular offering, the terms of which are available to duly licensed brokers. This listing is subject to the aforesaid conditions and is not to be deemed an employment nor a binding contract of any kind unless or until our brokerage agreement is fully executed.

**Scott Klatsky**  
(212)206-6155  
sklatsky@timeequities.com



**NYC RETAIL**  
BY TIME EQUITIES INC.

**Scott Schneidman**  
(212)206-6163  
sschneidman@timeequities.com