

125 MAIDEN LA



WATER STREET PLAZA | DOWNTOWN

RETAIL SPACE FOR LEASE

1,613 RSF
Ground
Floor

NEW YORK, NEW YORK



Ideal Food Location on
Downtown's Prime Corridor

Unit: **Ground Floor - B**

RSF: **1,613**

Frontage: **18' on Maiden Lane**

Avail: **Immediate**

Price: **\$185/SF**

Prime FiDi Retail

Adjacent to lobby of this Prime Office Bldg

Easily Vented at Rear of Building

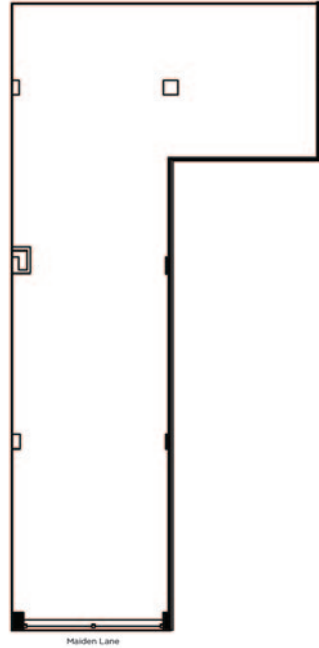
Scott Klatsky
(212)206-6155
sklatsky@timeequities.com



NYC RETAIL
BY TIME EQUITIES INC.

Scott Schneidman
(212)206-6163
sschneidman@timeequities.com

125 MAIDEN LA



Click on Plan
For Additional Information,
Photos, Videos...

WATER STREET PLAZA | DOWNTOWN

RETAIL SPACE FOR LEASE

1,613 RSF
Ground
Floor

NEW YORK, NEW YORK



Coming Soon:
(2) Hotels on Pearl St near Fletcher St



No warranty, or representation is made as to the accuracy of the above information and same is submitted subject to errors, omissions, change of price, rental or other conditions, prior lease or withdrawal without notice, and to any special listing conditions, including the rate and manner of payment of commissions for particular offering, the terms of which are available to duly licensed brokers. This listing is subject to the aforesaid conditions and is not to be deemed an employment nor a binding contract of any kind unless or until our brokerage agreement is fully executed.

Scott Klatsky
(212)206-6155
sklatsky@timeequities.com



NYC RETAIL
BY TIME EQUITIES INC.

Scott Schneidman
(212)206-6163
sschneidman@timeequities.com