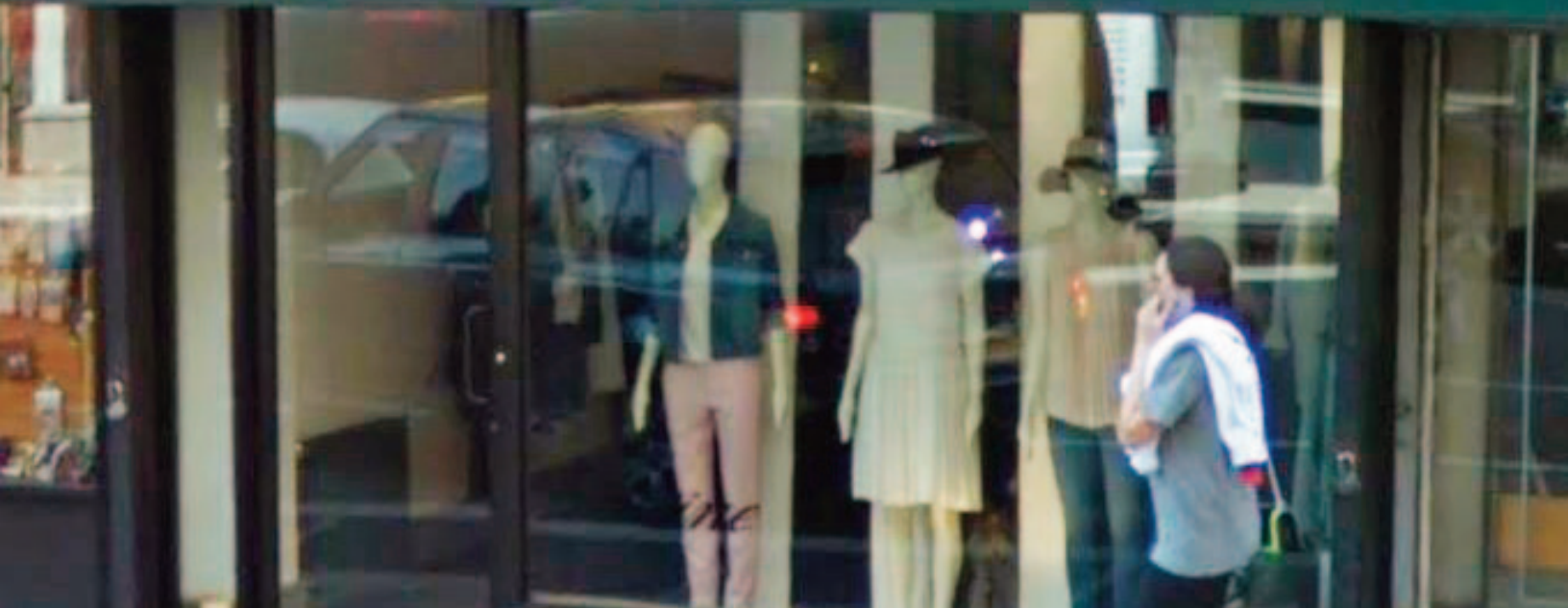


1216 Lexington

LUDIVINE



UPPER EAST SIDE | NEW TO MARKET

RETAIL SPACE FOR LEASE

950 RSF
Ground
Floor

NEW YORK, NEW YORK

Upper East Side

New retail opportunity on Lexington @ East 82nd St - Upscale Residential Neighborhood.

Unit: **Ground Floor**
RSF: **950 RSF**
Avail: **Immed**
Price: **\$219/SqFt**
Front: **14'**
Ceiling: **9' 6"**

Scott Klatsky
(212)206-6155

sklatsky@timeequities.com



NYC RETAIL
BY TIME EQUITIES INC.

Scott Schneidman
(212)206-6163

sschneidman@timeequities.com

1216 Lexington

950 RSF
Ground
Floor



**UPPER EAST SIDE
NEW TO MARKET**

RETAIL SPACE FOR LEASE

**950 RSF
Ground
Floor**

NEW YORK, NEW YORK

No warranty, or representation is made as to the accuracy of the above information and same is submitted subject to errors, omissions, change of price, rental or other conditions, prior lease or withdrawal without notice, and to any special listing conditions, including the rate and manner of payment of commissions for particular offering, the terms of which are available to duly licensed brokers. This listing is subject to the aforesaid conditions and is not to be deemed an employment nor a binding contract of any kind unless or until our brokerage agreement is fully executed.

Scott Klatsky
(212)206-6155
sklatsky@timeequities.com



NYC RETAIL
BY TIME EQUITIES INC.

Scott Schneidman
(212)206-6163
sschneidman@timeequities.com

55 FIFTH AVE | 15TH FLOOR | NEW YORK, NY | 10003-4398 | 212-206-6000 | TIMEEQUITIES.COM
LICENSED REAL ESTATE BROKER