

Installation Guide for RoboDK

Software used in



Description

PLTW's use of RoboDK requires a license. To request a license, fill out the form at the following link: https://docs.google.com/forms/d/1ku0QG0qKq0kVYDWb13dIFqXXRz-NyFCGRamngKfDsok/viewform?edit_requested=true


You can still install and image out licensing to machines. Each machine will need to get a license after it is installed. Please only activate licensing on machines that will be needed for PLTW Advanced Manufacturing use with RoboDK.

Procedure

1. Go to <https://robodk.com/download> and select Download.

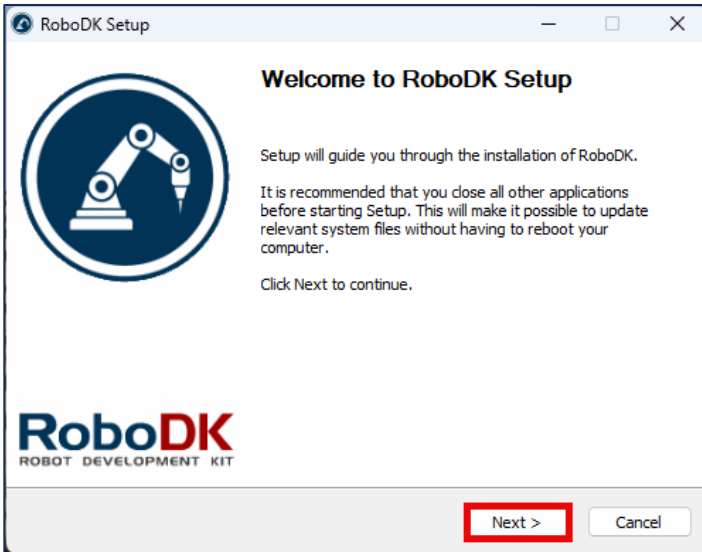


2. Go to where you downloaded the file and select the installer.

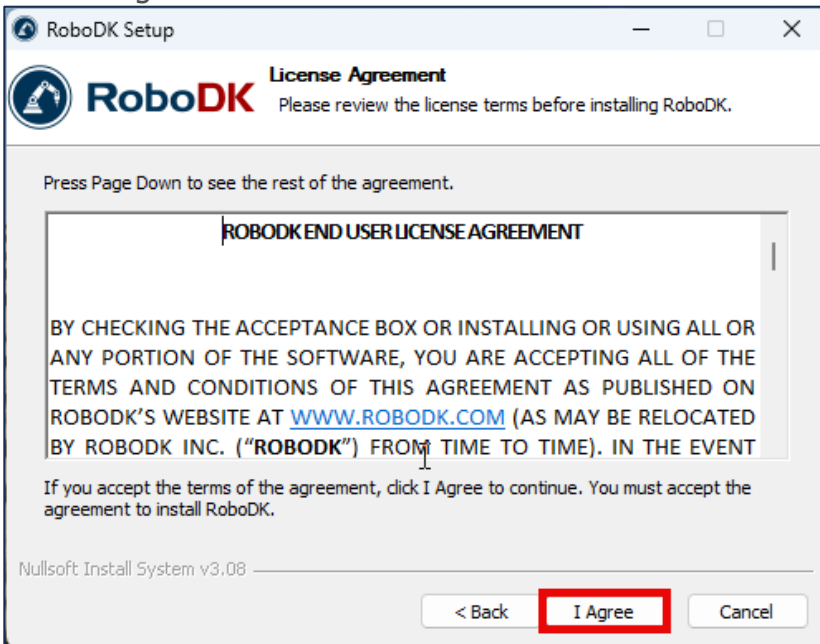
Name	Date modified	Type	Size
▼ Today			
 Install-RoboDK-64-v5.9.2.25331	9/17/2025 2:46 PM	Application	581,871 KB
▼ Last week			



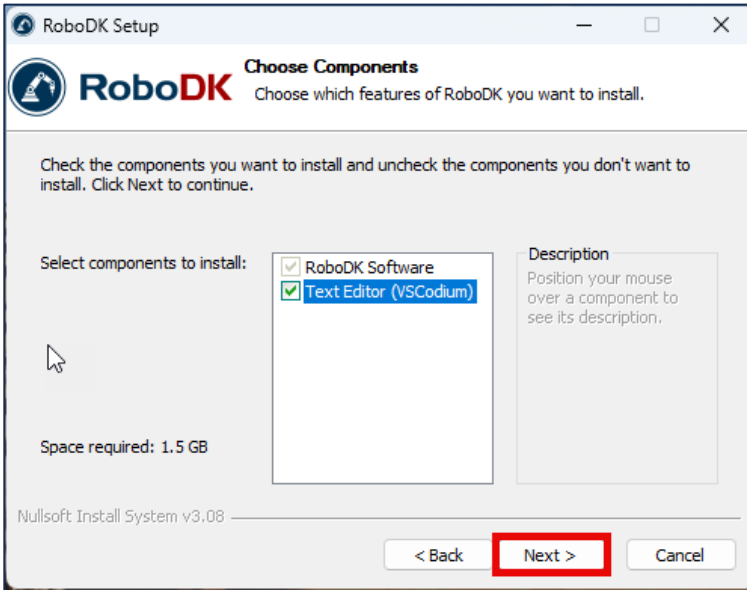
3. Select Next.



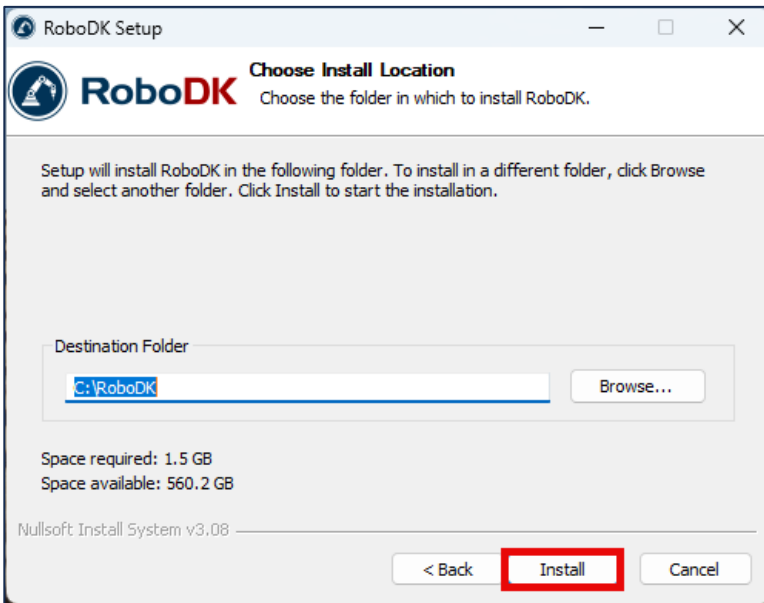
4. Select I agree.



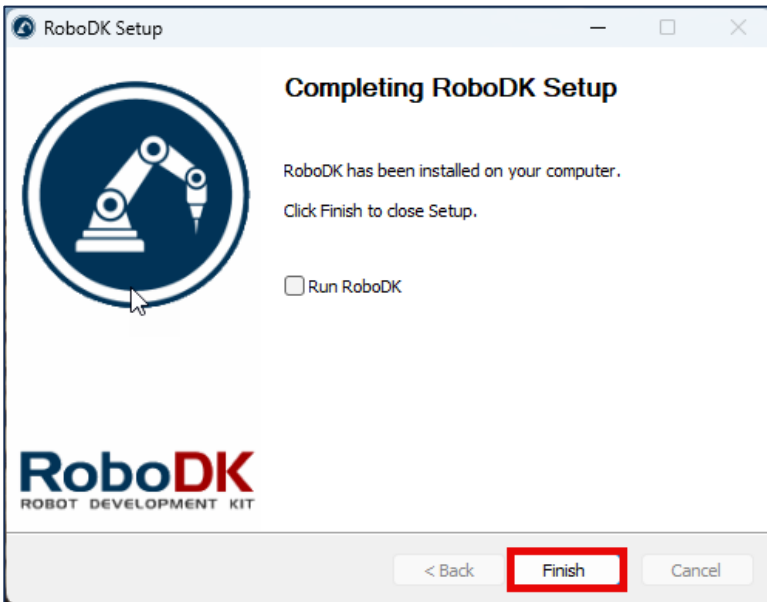
5. Select Next.



6. Select Next.

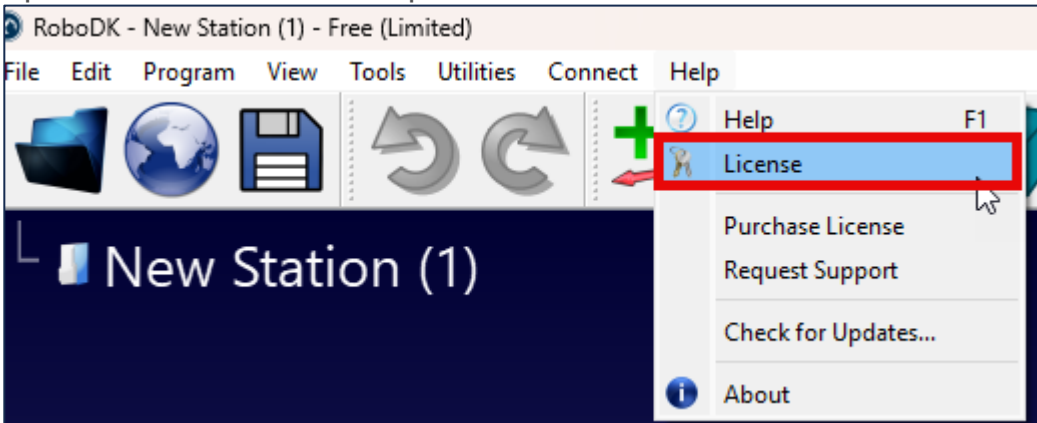


7. Select Finish.



******IF YOU ARE IMAGING YOUR MACHINES STOP HERE****
DO NOT APPLY THE LICENSE BEFORE IMAGING**

8. Open RoboDK and select Help then License



9. Select Network field and then enter the Server Code. You can copy and paste the serial number into the field.

