



MODERN PLATFORM, MODERN SECURITY

Cloud Security



Information System Security is more challenging than ever. It is also more important than ever. Protecting your organization's data is at the core of everything we do from robust role-based access and advanced security permissioning within our applications to comprehensive, standards-based cloud security at every level, at every moment.

Compliant

Standards-based security and operational compliance informed by the worlds leading compliance standards



Comprehensive
security at all
levels makes the
SumTotal Cloud a
trusted location for
your organizations
most sensitive
information

Effective Information System Security starts at the very beginning.



From secure design and coding principles, to ongoing developer security training, security is at the forefront of everything we do...



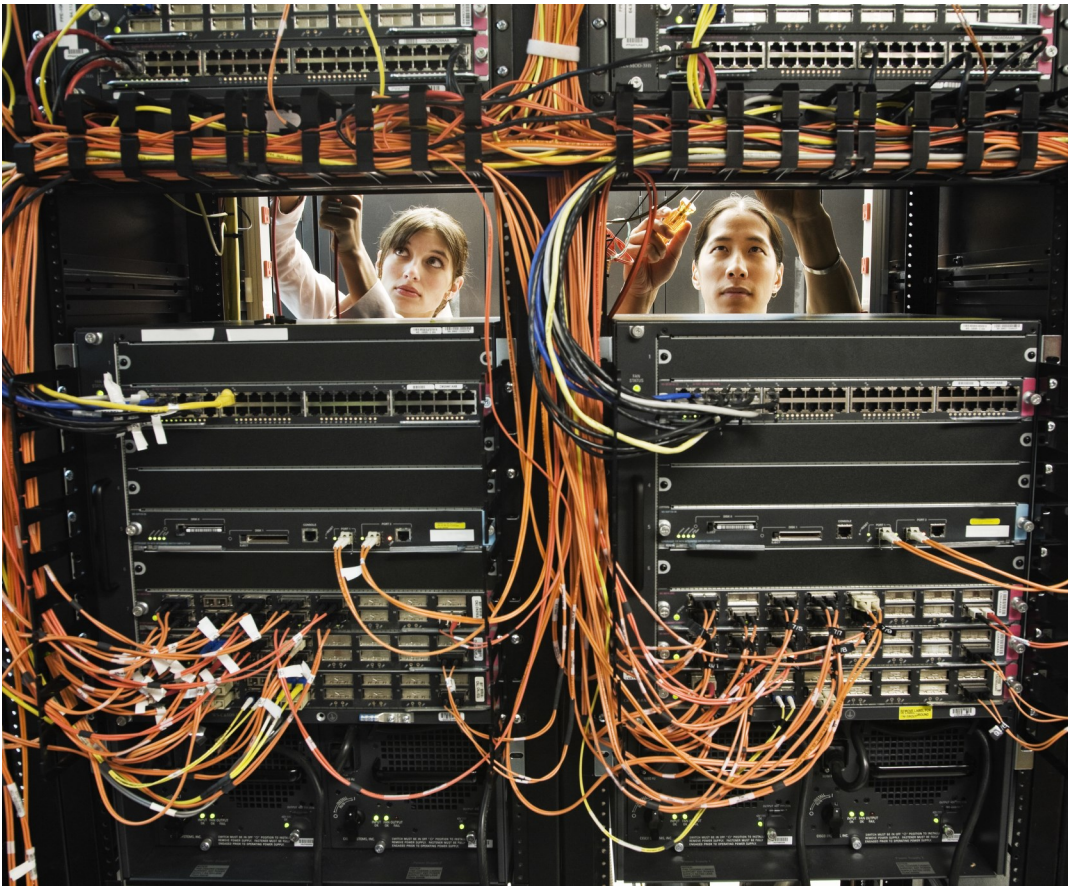
“As the leader of the SumTotal Software Engineering organization, fostering a culture of security-first coding has always been a priority for me. In today’s digital landscape security cannot be just an afterthought.”

Kevin Currier, SVP Engineering



"Security can never be just about one thing; it's about managing risk at every layer of your operations. Effective security practices build upon themselves and produce a result greater than the sum of their parts"

Jason Peardon, Director—Cloud Security and Infrastructure



From pre-hardened system images, to comprehensive endpoint protection, to encrypted storage, your data is protected throughout it's entire lifecycle

Secure Operations

Robust Encryption

TLS 1.2 Encryption with modern, secure ciphers. FIPS 140-2-certified storage.

Hardened Systems and Compliance Scanning

Pre-hardened system images, deployed through automation ensures security compliance. Continuous security scanning guarantees things start secure and stay secure.

Endpoint Protection

Realtime system scanning detects suspicious files immediately, including memory-resident risks

Intrusion Detection

Full network intrusion detection visibility identifies unusual network activity as it happens

With Cloud Operations— only access to customer data and regional data-sovereignty, your data is only accessible to those who need access and never leaves the SumTotal Datacenter