

# Grace *Today*

January 25, 2026

Vol. 31, No. 4



# Today at Grace

## 9 and 11 am

Worship Services  
Fellowship Groups  
Grace Kids  
Spanish Ministries

## After Morning Services

Welcome Center  
Member Center  
Grace Books  
Scholar's Desk  
Steeple House Coffee

### On the Patio

- Fundamentals of the Faith
- TMAI Symposium
- Volunteers

## 1 pm

Neighborhood Outreach  
(Tower Basement)

## 5 pm

Prayer Meeting (H114)

## 6 pm

Evening Service  
Adventure Club

See back for building locations.

During the 11 am and 6 pm services, interpreting in ASL is available in the Worship Center. Foreign-language livestreams for the 11 am and 6 pm services are available at [gracechurch.org/live](http://gracechurch.org/live).

We preach Christ,  
continuing the legacy of  
Pastor John MacArthur  
(served 1969–2025).

70  
grace  
community  
church

## Morning Worship Service — 9 and 11 am

Michael Bohr, Guest Director

### *Amazing Grace with Jesu, Joy of Man's Desiring*

Gene Roberson, Guest Organist

### Hymn 129 *Crown Him with Many Crowns*

Congregation

### *Jesus Shall Reign*

Brass & Percussion, Organ • Hatton/Lehman-Rice

### Scripture Reading & Prayer

### *How Firm a Foundation*

Worship Choir • Trad./Marsh

### *Christ Our Hope in Life and Death*

Congregation

### Announcements & Offering

### *I Will Worship You*

Jazz Hoffman • Ward/Rice

## MESSAGE

### The Most Important Question

Nathan Busenitz • Mark 8:27–30

### *For All the Saints*

Organ Postlude

## Evening Worship Service — 6 pm

### Prelude

### Songs of Praise

Chris Burnett

### Baptism

### Announcements & Offering

## MESSAGE

### The Servant's Struggle

Mike Riccardi • Colossians 2:1–5

### Right Hand of Fellowship

### Postlude

## Christ Our Hope in Life and Death

What is our hope in life and death?  
Christ alone, Christ alone.  
What is our only confidence?  
That our souls to Him belong.  
Who holds our days within His hand?  
What comes, apart from His command?  
And what will keep us to the end?  
The love of Christ, in which we stand.

### Refrain

O sing hallelujah!  
Our hope springs eternal;  
O sing hallelujah!  
Now and ever we confess  
Christ our hope in life and death.

What truth can calm the troubled soul?  
God is good, God is good.  
Where is His grace and goodness known?  
In our great Redeemer's blood.  
Who holds our faith when fears arise?  
Who stands above the stormy trial?  
Who sends the waves that bring us nigh  
Unto the shore, the rock of Christ?  
(repeat refrain).

Unto the grave, what shall we sing?  
"Christ, He lives; Christ, He lives!"  
And what reward will heaven bring?  
Everlasting life with Him.  
There we will rise to meet the Lord,  
Then sin and death will be destroyed,  
And we will feast in endless joy,  
When Christ is ours forevermore.  
(repeat refrain twice).

Words & Music by Keith Getty, Matt Boswell, Jordan Kauflin, Matt Merker, Matt Papa. © 2020 Getty Music Publishing (BMI) / Messenger Hymns (BMI) / Jordan Kauflin Music (BMI) / Matthew Merker Music (BMI) / Getty Music Hymns and Songs (ASCAP) / Love Your Enemies Publishing (ASCAP) / adm. at MusicServices.org. UBP. CCLI License #32723.

### TODAY

## Shepherds Conference Volunteer Meeting

If you have registered to serve at Shepherds Conference, join us today for an important informational meeting in the Family Center at 1 pm.

## Why Believe the Bible?

by John MacArthur

Skeptics, new Christians, and longtime believers will find in this accessible book clear answers to common questions about the Bible and the truths of Christianity.



Available today for  
**30% off retail** at  
Grace Books and the  
Scholar's Desk.

### GRACE KIDS

## Sunday School

9 and 11 am

### Saul Disobeys God

1 Samuel 13–15

**Main Idea:** God's Word is authoritative and must be obeyed.

**Application:** Submit to the authority of God's Word and obey it completely.

**Featured Hymn:** *My Jesus, I Love Thee* (Hymn 380)

**Review:** How did Saul try to justify his actions?

**Next Week:** 1 Samuel 16

## Adventure Club

6 pm

**Lesson 15:** God & The Atonement  
**Memory Verse:** John 3:16

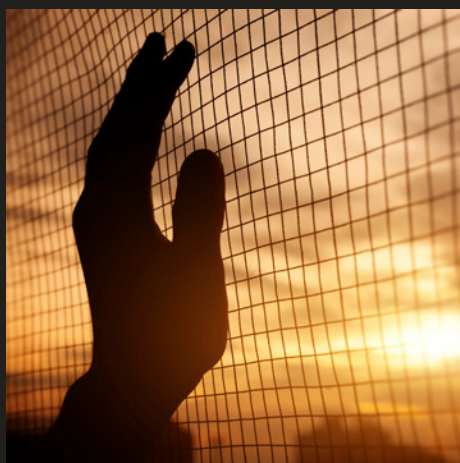
For Sunday School and  
Adventure Club room locations,  
visit Children's Check-In.  
[gracechurch.org/gracekids](http://gracechurch.org/gracekids)

# A LIGHT IN THE DARKEST PLACE

---

**CELEBRATING  
OVER 30 YEARS  
OF ACTIVE  
MINISTRY**

---



BY  
**CHUCK HOLMES**

---

FOUNDER / DIRECTOR,  
MT. NEBO PRISON MINISTRY

*Very seldom does a ministry come along that captures my heart like Mt. Nebo Prison Ministry. With all the groups in our world that label themselves "Christian," Mt. Nebo is a breath of fresh air. The difference? A clear, non-compromising commitment to God's Word. That's what sets Mt. Nebo Prison Ministry apart. This ministry drives prisoners into the Word of God, and that's something that is very dear to my heart. I have spent most of my life in a relentless pursuit of knowing what the Bible says. And for over fifty-five years I have dedicated myself to preaching the Bible and nothing else. So Mt. Nebo's loyalty to the truth is something that has thrilled my heart from the first moment I met Chuck Holmes.*

— John MacArthur

I experienced a radical change in July of 1989 that took me from decades of bondage to drugs, alcohol, racism, violence, and numerous prison sentences, to being a lover of Jesus. In 1990, I was converted on a jailhouse floor in Goodyear, Arizona. The vision for Mt. Nebo Prison Ministry (MNPM) began to take shape in that cell at Perryville Prison. The next year, Mt. Nebo was adopted into the mission program of Redemption Church (formerly East Valley Bible Church) in Gilbert, Arizona. Through the ministry, books and Bibles were sent to prisoners throughout the country and supplemented with one-on-

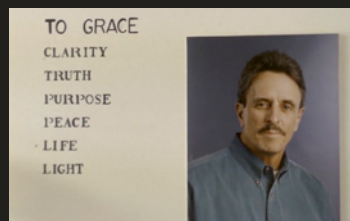
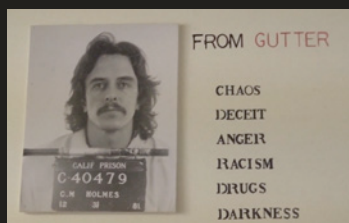
one correspondence with the inmates who received them. Then we started receiving requests from out of state—New Mexico and then Texas—and from other states as the word spread.

Today, Mt. Nebo offers any inmate who completes the thirteen-chapter Fundamentals of the Faith workbook a new *MacArthur Study Bible*. As a result, thousands of study Bibles are sent to state and federal prisoners each year, and MNPM has become the largest distributor of the English *MacArthur Study Bible* in the world. Further still, *Transformados*, the joint venture of Grace Church and Mt. Nebo Prison Ministry, provides materials for the large Spanish-speaking inmate population. *Transformados* seeks to



reach Spanish-speaking inmates by providing both Fundamentals of the Faith and, upon completion of FOF, a *MacArthur Study Bible*, in Spanish.

The effects of this distribution reach not only the world, but Grace Church's own congregation. I disciplined one man for over 25 years through books and letters. This man, Manny Flores, led over a thousand men through the *Fundamentals of the Faith* workbook. One of these men that he mentored was Jose Rosales, who now works in Facilities here at Grace and is active in the Foundation Bible study and their outreach efforts. This disciple-making work is the heart of Mt. Nebo, enabled through the efforts of Grace Church and Grace to You.



Though the ministry has seen changes over the past thirty-four years, its purpose remains the same: to be a resource used by God with a clear, uncompromising stand for Scripture and the gospel. As Pastor MacArthur wrote in a letter posted on the Mt. Nebo website, *"The prisons are a tremendous mission field. My hope is that you will be gripped by the potential that prisons offer for the spread of the gospel and the building up of the saints. . . . Mt. Nebo gives prisoners what they need most—the truth that is found only in God's Word."*

---

*In addition to directing the Mt. Nebo Prison Ministry, Chuck and his wife, Laura, serve at Redeemer Bible Church in Gilbert, Arizona.*

**Mt. Nebo Prison Ministry**  
[www.mnpm.org](http://www.mnpm.org)

***Transformados***  
[gracechurch.org/transformados](http://gracechurch.org/transformados)





## The Floreen Family

*Matt and Rachel, Abigail, Naomi*

**Serving in South Africa since 2009**

Pray for Matt as he looks to complete his PhD in Biblical Counseling; pray he can refine his dissertation topic to be both useful for the church and academically defensible. Please also pray for Rachel as she leads Little Ladies, a group to help godly women disciple their girls aged 11–13.

| [gracechurch.org/floreen](http://gracechurch.org/floreen)

## Faith Promise

Last week you generously gave **\$9,498**. Thank you for your ongoing support of our missionaries.

| [gracechurch.org/fp](http://gracechurch.org/fp)

### LOCAL OUTREACH SPOTLIGHT

## Volleyball Outreach

Every Monday night the Family Center is open to those in the surrounding community who enjoy playing volleyball. Play lasts until 7 pm, with a halftime break for a gospel presentation. This is a great opportunity for our church family to model how to compete in a Christlike manner and personally engage our friends with the gospel.

| Mondays, 5 pm, Family Center  
| [gracechurch.org/volleyball](http://gracechurch.org/volleyball)

## Upcoming at Grace

- 2/15 Communion
- 2/16 Presidents' Day (Campus Closed)
- 2/19 Elders Meeting
- 2/22 Right Hand of Fellowship

[gracechurch.org/calendar](http://gracechurch.org/calendar)

### HIGHLIGHTS

## Membership Classes

If you're interested in becoming part of our church family, a new cycle of Membership Matters classes begins next Sunday. Our three membership classes are designed to introduce you to Grace Church, covering topics like "Distinguishing GCC from Other Churches" (101), "Why Membership Is Biblical" (102), and "How to Be an Effective Member at GCC" (103). For more information on the membership process, visit the Member Center any Sunday after either morning service.

| Beginning next Sunday, February 1, 11 am,  
TMS Library (West)  
| [gracechurch.org/membership](http://gracechurch.org/membership)

## One with Christ

One with Christ exists to strengthen widows as they walk worthy of their calling (Ephesians 4:1), seeing God's hand in their healing, and finding strength and hope in God's Word.

This year we will be going through *Benefiting from Life's Trials* by John MacArthur and considering how we can live in light of the sovereignty of God in all life's circumstances.

| Tomorrow, January 26, 9:30 am, T172  
| [gracechurch.org/one-with-christ](http://gracechurch.org/one-with-christ)

## Shepherds Conference Scholarships

Help a pastor in financial need attend the Shepherds Conference with a gift of any amount.

| [gracechurch.org/scholarship](http://gracechurch.org/scholarship)

## STM Applications Open

Short Term Ministries are an amazing way to serve our missionaries and take part in what God is doing around the world. Applications are open for this summer's teams. Opportunities to serve include supporting conferences, participating in local evangelism, and assisting with youth and children's ministries.

Apply: [gracechurch.org/stm](http://gracechurch.org/stm)  
Info: [stm@gracechurch.org](mailto:stm@gracechurch.org)

## The Master's Academy International

### 2026 International Symposium

*Imperishable: The Necessity of Expository Preaching Among the Nations*

This year's symposium will consider the necessity of expository preaching in the life of the church and its mission to the nations. Keynote speakers Mark Tatlock, H.B. Charles Jr., David Robles, and Alex Kolomyitsev will examine how God's imperishable Word is faithfully proclaimed through careful study and clear exposition and how ministries are grounded in the authority of Scripture.

Tuesday, March 3, 9 am–5:30 pm, Santa Clarita  
Register: [tmai.org/symposium](http://tmai.org/symposium)



### Volunteers Needed

To volunteer, you must be a member of Grace Community Church or a student of The Master's University or Seminary. Approved volunteers receive complimentary registration to attend the symposium during times they are not serving, along with a registration code for one guest.

Sign up: [tmai.events/volunteer](http://tmai.events/volunteer)  
Information: [events@tmai.org](mailto:events@tmai.org)

Thank you for faithfully partnering in the ministry of our church as an act of worship to our Lord. Give during any of today's services or at [gracechurch.org/giving](http://gracechurch.org/giving).



## Ministry Highlight

### Hope Bible Study

Hope Bible Study is a transitional ministry that labors to encourage those who have been beset by life-dominating sin, such as drugs and alcohol, with the hope of Christ, the changing power of His Word, and the fellowship of His church. If you or someone you know could benefit from this ministry, please email [hbs@gracechurch.org](mailto:hbs@gracechurch.org) or call 818-909-5770.

Mondays, 7 pm, H221–222

## Grace to You

### Radio: *Show Me Your Faith*

KKLA 99.5FM LA / M–F 6:30 am & 7:30 pm  
KDAR 98.3FM Oxnard-Ventura / M–F 2 & 10 am; Sun 2 am  
KABC 790AM LA / Sat 7:30 am

### TV: "Through Christ, Life"

NRBTV Ch. 378 on DirecTV / Sun 6:30 pm

Visit our website for a full library of audio, video, and transcripts of Pastor John's sermons; "The Study Bible" and "Grace to You Sermons" mobile apps; and other resources.

[gty.org](http://gty.org)

## Job Openings

*PT: Part-time; FT: Full-time*

### Grace Church

*Applicants for employment must be, if employed, biblically qualified as a deacon or deaconess and a member of Grace Church. For more information or to request an application, contact Human Resources at [hr@gracechurch.org](mailto:hr@gracechurch.org) or 818-909-5672.*

- Nursery Supervisor, PT
- Security Patrol, PT
- Sunday Service Livestream Technician, PT

For a full description of jobs and benefits, visit [gracechurch.org/jobs](http://gracechurch.org/jobs).

### The Master's University

- Assistant Athletic Trainer, FT

For a full description of jobs and to apply, visit [masters.edu/jobs](http://masters.edu/jobs).

# Sunday Ministries

For a complete list of Sunday and midweek ministries, including those for men, women, and specific age groups, visit [gracechurch.org/ministries](http://gracechurch.org/ministries).



## 9 am

- Anchored T360**  
Pastor: Carl Hargrove
- Cornerstone T370**  
Pastors: Nathan Busenitz, Mark Tatlock, Mark Zhakevich
- GraceLife Family Center**  
Pastors: Phil Johnson, Mike Riccardi
- Steadfast T270**  
Pastors: Brian Biedebach, Brian Milam
- Xchange (Middle School) T70 (Tower Basement)**  
Pastor: Jay Lennington

## 11 am

- 180 (High School) T70 (Tower Basement)**  
Pastor: Isaías Muñoz
- Commissioned T270**  
Pastors: Rodney Andersen, Brad Klassen
- Crossroads (College & Young Adults) Family Center**
- Joint Heirs T360**  
Pastors: Tom Patton, John Street
- Sojourners T370**  
Pastors: Abner Chou, Joe Zhakevich

## 9 and 11 am

- Grace Kids**  
*For room locations, visit Children's Check-In.*  
Pastor: Jay Lennington
- Developmentally Disabled CC130E**  
Pastor: Rick McLean
- Spanish Adult Sunday School T260**  
Pastor: Josiah Grauman
- Spanish Worship Services Chapel**  
Pastors: Josiah Grauman, Rubén Pidal, Tom Rios

# Campus Map

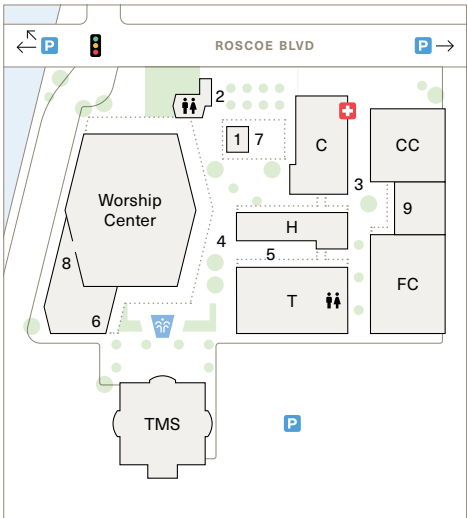
13248 Roscoe Blvd  
Sun Valley, CA 91352  
818-909-5500  
[gracechurch.org](http://gracechurch.org)

Public Wi-Fi:  
Grace Church Wi-Fi  
Password:  
Proverbs3:5-6

*Please note that today's worship services are being livestreamed and recorded. In addition, your likeness may be recorded or photographed while on campus. Your presence on campus constitutes your permission to Grace Community Church to use images or video of your likeness.*

## Legend

- T Tower
  - H Heritage
  - CC Children's Center
  - FC Family Center
  - C Chapel
  - 1 Welcome Center
  - 2 Member Center
  - 3 Children's Check-In
  - 4 Patio
  - 5 GraceWalk & Steeple House Coffee
  - 6 Grace Books
  - 7 Scholar's Desk
  - 8 Prayer Room
  - 9 Well-Baby Cry Room
- PM Location:  
Welcome Center (1)



**Pastor John MacArthur** was pastor-teacher of Grace Community Church for 56 years (1969–2025). His weekly verse-by-verse exposition of God's Word firmly rooted our church family in truth. Grace Church continues that legacy, seeking to glorify God by proclaiming the gospel.

## Family of Ministries

- Grace to You**  
[gtu.org](http://gtu.org)
- The Master's Seminary**  
[tms.edu](http://tms.edu)
- The Master's University**  
[masters.edu](http://masters.edu)
- The Master's Academy International**  
[tmai.org](http://tmai.org)
- John MacArthur Trust**  
[jmacarthurtrust.org](http://jmacarthurtrust.org)

*Grace Today* is published weekly by Grace Community Church. Copyright © 2026 by Grace Community Church. Scripture, unless otherwise noted, is taken from the Legacy Standard Bible® (LSB®), Copyright © 2021 by The Lockman Foundation. Used by permission. All rights reserved.

