



Matanzas State Forest

4,699 Acres



206

A1A

Moses Creek
Conservation Area

Matanzas
Group Camp

Guana Tolomato Matanzas
National Estuarine Research Reserve

Dupont Rd.

Kling Road

Pop Burney Rd.

Longleaf Road

Evans Road

Eagles Nest Road

Double Gate Rd.

Flying Eagle Rd.

Cedar Creek
Road

Smith Grade Rd.

Faver-Dykes
State Park

Entrance

P ?

P 









Cedar Creek
Campground

1.1 M.

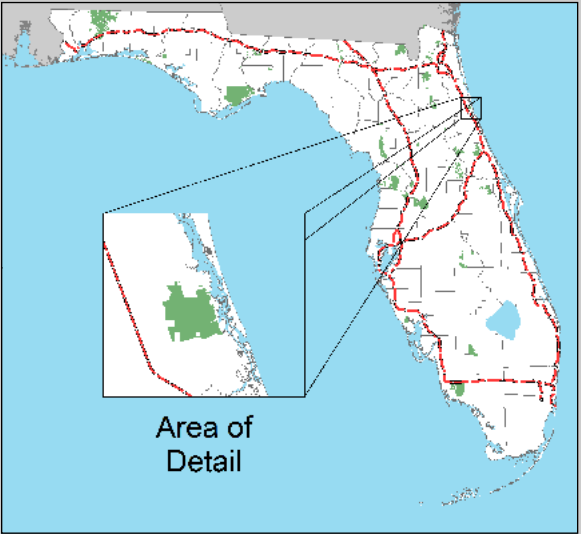
1.4 M.

1.3 M.

Legend

-  Parking
-  Information Kiosk
-  Primitive Camping
-  Flatwoods Hiking Trail 
-  Service Road (Closed to vehicles)
-  Water
-  State Forest

0 0.5 Miles



DISCLAIMER
This map is the product of the Florida
Forest Service. No warranties are
provided for data therein, its use, or its
interpretation.