

RICHARD D. WEIGLE

Weigle begins his 31st and final year at SJC

Richard D. Weigle is about to begin his final year as president of St. John's. It will be no ordinary year. It will be his 31st. Scan directories of American colleges, and you will be hard put to find the name of a president of a liberal arts college who has served longer, certainly of no liberal art college with the national stature of St. John's.

Dick Weigle is a presidential anomaly, something of a throwback to the less stressful, gentler era when college and university presidents remained for decades, a quality not unexpected, perhaps, at this college which in

some respects looks to other eras for its classical education.

It is not, however, that his three decades have been without stress.

Mr. Weigle has survived the disruptive 60's, when college presidents were fleeing such positions all over the country. He has sweated his way through financial crises and toiled tediously to meet the ever increasing demands of annual budgets, and he has labored endlessly — days, nights, months, years — raising money to keep the place going.

He has maintained a divided residence and become an airborne president, averaging 30,000 miles a year between eastern and western campuses and elsewhere in the United States on behalf of each campus. Along the way he has known some moments of being very much alone and some of great personal gratification.

Of all of St. John's 18 presidents who have served since 1789, he has served the longest with the exception of Thomas Fell, president for 37 years, from 1886 to 1923.

BUT LONGEVITY alone and by itself has no special merit. Survive a great many people can, but survive and pack years of accomplishments into three decades requires special talents. Mr. Weigle will retire next June 30 at the age of 68 after what one former Annapolis dean has called a "Herculean achievement."

"It is impossible to overestimate Mr. Weigle's contribution to the very existence of St. John's, not to mention its continued successful challenge to American undergraduate education," Dean Edward

(Continued on P. 12)

(Continued on P. 11)

*The St. John's*

REPORTER

Annapolis, Md.

VOLUME VII ISSUE I

SEPTEMBER 1979

Four seek president's post

St. John's new president may be chosen in December, a month earlier than originally scheduled.

Four candidates whose names are still to be announced were to begin arriving on both campuses this month to meet faculty members and key members of the administration.

In late October or early November the Search Committee will meet in New York to appraise the results of those meetings with a view to reporting its findings at a special meeting of the Board of Visitors and Governors tentatively set for December 7-8 in Annapolis.

"If all goes according to expectations, we will be attempting to arrive at a clear, unanimous decision at that time," D. Robert Yarnall, Jr., Search Committee chairman, reported.

Still under discussion is whether the committee will present the name of a single candidate to the board or names of the two finalists.

Visits here by candidates follow a systematic and carefully conducted search begun in January for a new president to succeed Richard D. Weigle next July 1. In all, the committee has interviewed 11 candidates, drawn from a pool of 200 suggested

names.

While the committee does not expect to conduct any more interviews, Mr. Yarnall said it does not preclude the possibility should an attractive candidate appear.

Of the four candidates, three come from without the St. John's community and one from within. One of them is a woman, who, Mr. Yarnall said, is not a "token" figure but a person with substantial credentials.

In visiting the college, they will be timing their overnight stays to coincide with seminars. Their visits, guidelines for which were laid down by the Search Committee, will include sessions with President Weigle and the Instruction Committee and meetings with faculty members, key administrators, and

students.

Serving as hosts will be the eastern and western deans — Edward G. Sparrow and Robert S. Bart. Accompanying each candidate for parts of their visits will be Mr. Yarnall and Charles A. Nelson, chairman of the Board of Visitors and Governors.

Mr. Yarnall said the notion of a divided residence for the president, who must maintain homes in both Annapolis and Santa Fe, had not proved to be a serious impediment for the candidates.

"It remains a problem," he said, "and all four candidates had different solutions. But it has not proven a deterrent for those people who are seriously interested in the program. They have felt that the ends were so important that it is worth finding a solution."

Program gives master's

St. John's has awarded its first three master's degrees to be given here under a new summer program begun in 1977.

In a brief exercise, rich in the ceremony St. John's traditionally uses for such undergraduate occasions, Acting President Hugh McGrath awarded master's of liberal arts degrees to Marilyn Mylander, of Stevensville, the St. John's nurse,

and to two teachers — Jeanne Blakeslee, of Baltimore, and John Carosella, of Greensburg, Pa.

Since the founding of its new curriculum in 1937, St. John's has given master's degrees, but only to faculty members who have met special requirements. These were the first master's to be awarded through the Annapolis

(Continued on P. 9)

Board acts on Randall

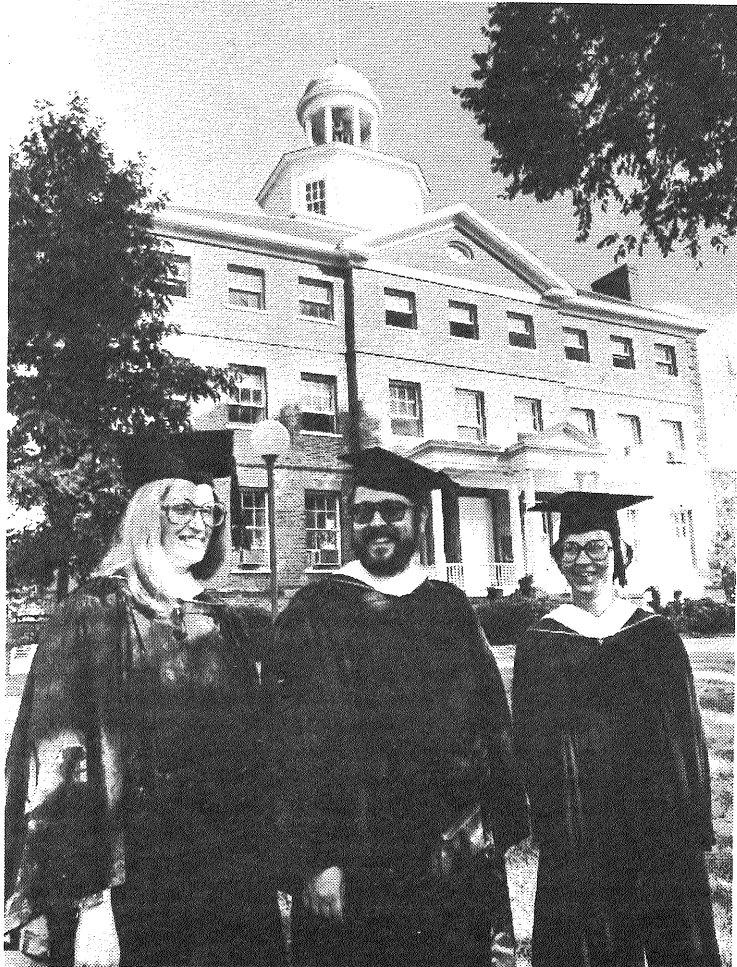
The completion of architectural plans and specifications for two major renovations on campus — Randall Hall and the Paca-Carroll House — has been authorized by the Board of Visitors and Governors.

President Weigle said he hopes that construction can start within the academic year.

As the first indication of the coming work on Randall, the college dining hall, foundation borings have been taken to determine if the grounds are sufficient to withstand the weight of a new extension at the rear of the building.

The successful test is for an addition which would house new kitchen facilities and make possible an increase in the size of the dining hall. Also planned are a suite of rooms for the business office in the location of the present kitchen, two private dining rooms, and a deck overlooking the back campus.

Paca-Carroll, a small dormitory, will be enlarged by a new, contemporary-style wing separated from the present 19th century building by a glass "hyphen." Architectural plans for both projects have been approved by the Annapolis Historic District Commission.



The trio with new masters are, from left, Marilyn Mylander, John Carosella, and Jeanne A. Blakeslee. Evening Capital Photo

ALUMNI EAST AND WEST



By Tom Parran '42
Director of Alumni Activities

1948
Jules O. Pagano, until recently president of the Massachusetts Board of Regional Community Colleges, on August 1 became provost of Simon's Rock Early College and vice president of Bard College.

Simon's Rock is the nation's only early college and became a unit of Bard in February. Its campus is in Great Barrington, Mass. Jules has been dean and associate vice president of Florida International University in Miami, as well as director of adult education for the U.S. Office of Education.

In addition, he was responsible for the formulation of policies and procedures for administration of the Peace Corps, was commissioner of the Florida Commission on Human Relations, a national union representative, and vice president of a national consulting firm.

1950
The Rev. and Mrs. David C. Streett II recently announced the birth of their daughter, Corbin Ruth Guion Streett, on June 11. David and the former Betty L. Evans were married in the Church of St. Augustine of Canterbury, Augusta, Ga., on June 28, 1975. Betty is an alcohol and drug counselor at Eisenhower Memorial Hospital, Ft. Gordon, and David is a clinical chaplain at the Georgia Regional (Mental) Hospital, Augusta.

1962
Recently promoted to associate professor at Montclair (N.J.) State College was Dr. David Benfield of the department of philosophy/religion. David taught at the State University of New York at Stony Brook for six years before going to Montclair in 1973.

1963
Lynn Kopke Pekkanen writes that she is working as a consultant with University Research Corporation in Washington, D.C. Husband John '61 at this writing is awaiting publication of his latest book, *The Best Doctors in the U.S.* (Seaview Press), due out in early September. (We have seen very favorable reference to this new book in several periodicals — TP). John is also

the author of *Victims: An Account of a Rape* (New York, Dial Press, 1976), and *The American Connection: Profiteering and Politicking in the "Ethical" Drug Industry*. He is a former newspaper reporter, *Life* magazine staffer, and Nieman Fellow at Harvard.

1964
From William P. and Arlene Andrew Banks comes all sorts of good news: Bill has been promoted to full professor at Pomona College, Arlene has earned her master of urban planning degree, and jointly they have produced Abigail Rebecca Banks, born October 6, 1978. Our congratulations on all three counts.

William Dunkum received his Ph.D. degree in physics from American University, Washington, D.C., in May. Bill's thesis topic was "Computer Simulated Experiments." During this academic year, Bill will be on leave of absence from his position as city-wide math / science chairman in the Alexandria, Va., Public Schools, serving as a consultant to the Philippine National Engineering Center on a university up-grading project funded by the Asian Development Bank.

1966
Kay Randolph-Back writes that she keeps busy handling federal legislative activities, major State statutory revision, and staff work in health planning, law, and policy for Michigan's Medicaid program.

Alexis DuPont Valk received the doctor of arts degree in music from Ball State University on May 18. He also holds the master of music degree from Ball State.

1969
Prompted by her reading of our publications to keep track of people she knew at St. John's, Rachel Hallford Gallagher decided it was time to send us her own news. She was married and divorced in Philadelphia, received an M.A. degree in information science from Drexel Institute, and moved to New York. In her six years in that city she worked as a technical librarian for the computer subsidiary of the Stock Exchanges and more recently as a systems analyst for Guardian Life Insurance. Finally, she reports she was married to Don Freiman, a law student at St. John's University in Queens, in August.

1969 — Santa Fe
John D. Goodwin brings us up to date with news of a divorce and re-marriage since his last letter. His wife, Ida, comes from Kansas by way of Alaska and Australia. They have an eleven-year-old son

Bryan, and a brand-new addition, Andrew John, born June 14, 1979. John is still a helicopter pilot, and the family lives in Jackson, Wo.

1970
The Baltimore Hebrew College has appointed Steven Harvey to a newly-created position in Jewish philosophy, and beginning in September Steve will teach courses in the college's high school, undergraduate, graduate, and adult education divisions. His doctorate was received in 1977 from Harvard in the field of Jewish philosophy and intellectual history, with additional studies in Hebrew and Arabic language and literature and medieval Islamic philosophy. For the past two years Steve has taught philosophy courses at the University of Maryland. The Harveys (she is Nancy Goldwin, '67) and their three children live in Baltimore.

1970 — Santa Fe
Christopher B. Nelson and five other attorneys announced in June the formation of the Law Offices of E. Allan Kover, P.C., with offices in Chicago.

1972
Susan (Ferwerda) Peterson recently brought us up to date on the family she and Chris '74 have created since leaving college: William Lawrence, born 1973; Joan Winifred, 1974; Carl Henry, 1976; and Emily Susan, 1978. Susan plans to attend nursing school to become a certified nurse-midwife; her interest stems from her considerable experience with the births of her own children. Chris is *sous chef* (assistant chef) at the Cafe des Artistes in Baltimore's Hopkins Plaza. The Petersons have bought and are fixing up "a somewhat decrepit Victorian cottage" on a quarter-acre in Baltimore City. She urges those alumni still "hanging around Annapolis" to move to Baltimore, "where a house can be bought for the amount of a down payment... in Annapolis".

1973
John and Anne Hawk Fitch announced, with a delightful hand-screened card, the birth of Asa John Hawk Fitch on June 22.

Jane Young, in sending a new address in Philadelphia, reveals that she has completed her course work for her doctorate in folklore (with minors in anthropology and linguistics) at the University of Pennsylvania. This fall will see her taking examinations, starting on her dissertation, and teaching a course in folklore of Native American Peoples, and perhaps a course in Old and New World archaeoastronomy, both at Penn. This summer she was working under an NEH Youth grant on a

(Continued on P. 10)

New book contains conference dialogues

Two years ago a small group of colleges who use great books instead of textbooks and whose curricula is highly structured met in Santa Fe to talk about liberal education as they saw it.

During the course of three days participants talked about what great books are and how they should be used, about what emphasis these colleges place upon their seminars, about the differing nature of the university and the college and whether a university department represents an "entrapment," and about the role in liberal education of those great works which present the human image.

The conference came as the culmination of a three-year-long study on liberal education conducted on the Santa Fe campus under the auspices of the National Endowment for the Humanities.

WHAT EMERGED from those three days of meetings is recorded in a book, "Three Dialogues on Liberal Education," to be published this fall by the St. John's College Press.

It has been edited by William A. Darkey, chairman of St. John's NEH study and former dean of the Santa Fe campus, who has written both a forward and afterward. Publication was made possible as the result of an additional NEH gift of \$12,500.

Rather than seeking to gather educators with strongly differing and perhaps antagonistic approaches, Mr. Darkey sought a group from institutions which have programs similar to that at St. John's: St. Mary's College, Moraga, Calif.; Thomas Aquinas College, Thousand Oaks, Calif., and the University of Notre Dame, Notre Dame, Ind.

Present also was Joseph Tussman, who headed a short-lived, great books program at the University of California at Berkeley, and Abraham Ascher, representing the NEH.

"People came for three days to visit classes," Mr. Darkey said. "We wanted plenty of time for easy conversation, to exchange notes on what we were doing, and to try to promote communication."

On the formal occasions the group came together to discuss questions central to them a court reporter was present. It was out

of this record that the book has evolved.

"When we read the transcript, we had the sense something kind of interesting had happened," Mr. Darkey said.

To preserve their discussions, Mr. Darkey decided to take the transcript, do some editing to render ordinary speech readable, to do some rearrangement, although not very much, and to make what was said available to a larger audience.

"TWO MAIN educational principles seem to underlie the conversations," Mr. Darkey wrote in his afterward.

"One concerns the relation of the undergraduate college to the university in our educational system, while the other has to do with the nature of learning itself.

"With respect to the first, the persons of our dialogue take the position that the only activity proper to the undergraduate college is liberal education, often termed general education. The second is more difficult to state succinctly.

"One way of putting it is that learning can only be the act of the learner. Learning may be assisted by a teacher, but it is never the necessary result of the teacher's act. Put another way, learning is not a passivity of the student before the teacher who informs him, but an activity of the student which the teacher may be able to help with."

The book will be available in bookstores of both campuses late this fall.

Participating were Albert Dragsted and David Loomis, St. Mary's; Ronald McArthur and Marcus Berquist, Thomas Aquinas; John Lyon and Walter Niegorski, Notre Dame; Richard Weigle, Robert Bart, David Starr, J. Burchenal Ault, Mr. Darkey, Dean Haggard, Thomas Simpson, John Steadman, and David Townsend, St. John's.

Library is adding Rembrandt slides

Admirers of Rembrandt's works will have access to a new collection of 118 slides from the Rijksmuseum in Amsterdam.

Recently added to the collection of several thousand art slides at the St. John's library, they consist principally of sketches and drawings of Rembrandt's works.

Caritas plans Greek feast

The Caritas Society, which has awarded \$27,480 in scholarship aid on the Annapolis campus during the past 10 years, will hold its principal fund raising event of the year—its annual feast—Saturday, Oct. 13, at the college.

This year the theme will take the form of a Greek Odyssey with chicken oregano, moussaka, Greek pastries, and wine on the menu, according to Mrs. Daniel Cohn, chairman. There will be Greek music during the evening.

Seatings will be at 7:30 and 9 p.m. in the dining hall preceded by receptions and toasts at 6:30 and 8 p.m. in the Great Hall. Dessert and dancing will follow in the Great Hall. For those attending, Greek dress will be optional.

Price will be \$15 a person. Reservations may be made by mailing checks to Mrs. George B. Walton, Jr., 109 Old Crossing Lane, Annapolis, 21012, reservation chairman.

A second fund-raising event also is planned for October. The Caritas Needlework Show will be held October 26-30 in the conversation room of the Key Auditorium. Mrs. Maxine Frederick, chairman, said the delivery date is October 24 and pick-up date October 31. Proceeds also will go the scholarship fund.

The Reporter

Rebecca Wilson
Editor

The Reporter is published by the Office of College Relations, St. John's College, Annapolis, Md., 21404, Richard D. Weigle, president. Published five times a year, in February, April, June, September and November. Second class postage paid at Annapolis, Md.



Geoffrey Comber thanks Victor E. Willis, pianist and Graduate Institute alumnus, for a gift of money to start a scholarship endowment fund on the Annapolis campus. photo by Tom Parran

Gift endows scholarship

Proceeds from a Carnegie Hall benefit concert have become the nucleus of a new \$1,000 endowment fund for scholarships for the Graduate Institute in Annapolis, Geoffrey Comber, its director, has announced.

A gift of \$650 has been presented by two of the institute's Santa Fe alumni — Frances Haywood, '75, a contralto, and Victor E. Willis, '77, pianist, both New York City teachers. Astor Fellows at the time they attended, they presented their concert

earlier this year in New York specifically for fund raising purposes.

At the Greek celebration following commencement last month for Annapolis' three master's degrees recipients, students augmented the sum with an additional gift of more than \$150. As a third gift, J. Burchenal Ault, vice-president at Santa Fe, agreed to make up an amount sufficient to start the endowment at \$1,000.

"We are deeply grateful to

Mrs. Haywood, Mr. Willis, and Mr. Ault as well as to this year's students for their most generous gifts," Mr. Comber said. "It means that just three years after the institute has begun here, we will be able to start an endowment fund which, as it increases, will be of immense help to future students."

The Carnegie Hall concert included five poems of Walt Whitman set to music by Mr. Willis and sung by Mrs. Haywood.

NEH Fellows begin pilot program

Trudy Koch, mother of five, English teacher about to teach Latin, Graduate Institute booster of the first magnitude, burst into the office bubbly with enthusiasm.

She had been going at a tearing rate. "I don't see how 18-year-olds do it!" she exclaimed, a touch of awe for the pace of the program clearly there. With her first summer as a National Endowment for the Humanities fellow almost over, she was spilling over with praises for the institute's master's program: "The seminars are a joy, the tutors are fabulous."

Mrs. Koch was one of a small group of NEH fellows on campus for a pilot program still to be evaluated. Ahead this winter lie individual interviews with participants and a series of small, regional workshops to see how fully successful the teachers have been in their efforts to significantly change the areas in which they teach.

Under the NEH funded program, each teacher came with a specific project in mind. In addition to working on these, individually and as a group within a preceptorial, they have been reading some of the great thinkers on education — St. Augustine, Montaigne, Jefferson,

Locke, Whitehead, and Dewey.

One teacher developed a behavior modification course based upon his belief that books, rather than detention hall, can do the best job in helping the so-called "bad kid."

John Carosella, of Greensburg, Pa., has prepared a list of novels and plays raising questions of good and evil which can be used as a high school elective. He hopes that students, in reading and discussing them, will come to terms more fully with themselves and gain new self-awareness and confidence.

In a program designed to help Anne Arundel County teachers, Glenn Springer worked on a method for teaching linguistics in advanced grammar using the "discovery method," generally associated with science, a method which she already has successfully taught at Andover High School in her advanced grammar class.

MRS. KOCH, a Wheaton High School teacher from Montgomery County, where Latin is enjoying something of a come-back, is planning weekly round-table discussions in which students will compare the ideas of Lucretius, Marcus Aurelius, and Thornton Wilder as well as learn to write orations.

Another Montgomery County

teacher, William S. Cormeny, furthered work on a creative writing project using Latin and Greek authors for Churchill High School.

Mary Ann Isaac, of the High Point Hight School faculty in Beltsville, was awarded a fellowship to prepare a county-wide course about women in literature which will be linked with a history course already being offered in Prince Georges County dealing with women in the American society.

Jeanne Blakeslee, who plans a second master's in theology, came from Baltimore to develop a program tying together theology and the fine arts.

Sylvia Weaver Jones, of Chevy Chase, a speech pathologist and former member of her Town Council, was the only member of the small group who was not an active teacher.

As assistant PTA vice-president for Bethesda-Chevy Chase High School and its feeder schools, Mrs. Jones was awarded an NEH fellowship to work on a program aimed at countering what she believes to have been adverse and unbalanced publicity on the high school. In attempting to restore confidence in the school, she hopes to work with a wide variety of groups within the community.

Sydney Porter at work at Three Mile Island

In March of this year Sydney W. Porter, Jr., made a surprising discovery about himself. A man of 46 could stay up two and a half days without sleep and produce effectively.

An hour and ten minutes after the March 28 emergency was declared at Three Mile Island, Mr. Porter received a telephone call.

"Three Mile Island needed not only my 23 years of experience with nuclear power reactors, and my intimate knowledge of their plant, their people, their procedures, and the environment around Three Mile Island, but also they needed someone to think clearly and objectively in a true emergency under highly stressful conditions," this St. John's College graduate of 1954 who heads his own consulting firm at Ardmore, Pa., explained.

For the duration of the Three Mile Island incident, Mr. Porter was among the full-time specialists assisting in top consulting positions. As an advisor to the Metropolitan Edison and Three Mile Island itself, he helped assess close-in radiation hazards, assisted the health physics groups with their external dose assessment program, and found himself answering a myriad of questions from investigation teams and committees from the U.S. Presidential Commission, Congressional committees, the Pennsylvania Legislature, Nuclear Regulatory Commission, Environmental Protection Agency, and others.

MR. PORTER'S FIRM—Porter-Gertz Consultants, Inc., of Ardmore, Pa.—performs services in the areas of environmental surveillance and radiological protection. It designs programs which characterize the amount of radioactive material in the environment—terrestrial and aquatic as well as in the air.

"After these programs are designed and implemented, (which often requires many years of study in order to properly characterize the environment so that you can design a new program to properly sample it), then we collect the data, resolve it, draw conclusions, and apply statistics to it," Mr. Porter said. "Thus biostatistics are a very important part of our everyday life here at PGC."

"After these environmental programs have been run for several years, they are then

redesigned so that we can get the maximum data which can be treated statistically from the environment, and so that we can eliminate sample taking that does not yield useful data."

Its radiological protection services are myriad: checking on the exposure of the workers from both external radiation and from internally deposited radionuclides, writing radiation emergency plans, drafting specific procedures.

"Along this vein, we also perform training in emergency response for the plant staff, which includes the writing of emergency drill scenarios, the running of these drills, identification of problem areas, and the follow-up on these specific problem areas in emergency planning and response."

MR. PORTER believes the true heroes of the Three Mile Island incident were the 300 members of the Metropolitan Edison staff itself. Under "incredibly adverse conditions," he noted, these people functioned like a "well-oiled and efficient unit."

"It was an heroic act," he said. "...The molding of this staff into a coherent, functioning unit required years of training, education, and just plain hard work. This education process was directed by many people under the strong leadership of Bob Arnold and Jack Herbein, who are now the two main leaders of the emergency organization..."

"As a consultant and advisor to Metropolitan Edison and Three Mile Island staff, I played a minor role in this education and training effort. As a member of the TMI emergency organization, I was just one of 300 performing a duty in a calm, orderly, and efficient manner under stressful conditions."

As one of those 300 Mr. Porter attributed his ability to perform his work under stressful conditions in part to St. John's. "The skills required to think clearly and objectively under high stress situations are just some of the many things that I believe the St. John's education offers," he said.

ALTHOUGH THE main focus of his attention was on the effects of the accident in the near vicinity of Three Mile Island, Mr. Porter said the people at highest risk were certainly the Metropolitan Edison workers.

But he emphasized that the total exposure of all these workers was far less than has often been received during major maintenance outages.

Two new book funds

The Annapolis campus library has two new book endowments: the Bert Thoms Library Memorial Fund, established by his widow, Josephine Thoms, and the Faculty Memorial Book Endowment, established by the college administration.

Charlotte Fletcher, librarian, said they represent steps toward acquiring a total endowment for the library of \$250,000, the amount needed to yield \$15,000 a year for book purchase. At present the endowment is \$121,000.

Besides gifts of money designated by individual donors for these two new endowment funds, Miss Fletcher said that proceeds from the sale of gift books found not suitable for the library will be added.

"In the meantime, thanks to the generous support of Eugene Thaw, '47, a member of the Board of Visitors and Governors, the library is assured of a book budget of \$15,000 in 1979-80 and 1980-81," she said.

Annual Giving in Annapolis, 1978-79

I. Summary of Fund Raising — 1978-79

Purpose	
Current Funds	
Unrestricted	\$243,410
Restricted	175,853
Total	\$419,263
Capital Funds	
Endowment Funds	\$ 62,350
Plant Funds	443,100
Total	\$505,450
Total Funds Raised	\$924,713
Source	
Alumni Fund	\$ 64,077
Alumni Capital	347,306
Parent Fund	16,537
Other Individuals	63,389
Corporations & Foundations	429,538
Bequests	3,866
Total Funds Raised	\$924,713

II Non-Alumni Contributors

St. John's continues to be grateful for the fine support received from non-calumni individuals — parents and other friends — as well as from corporations and foundations. Especially helpful to the Annapolis campus are corporate gifts through the Association of Independent Colleges in Maryland. These donors are listed below in the section on Corporations and Foundations.

Board and College Community

PRESIDENT'S COUNCIL

M/M J. B. Ault
Mrs. Margaret Driscoll
John T. Harrison
Jerome LaPides
Mrs. Carlton Mitchell
Mrs. Duane Peterson
Brother Robert Smith
Theodore Smyth
ST. JOHN'S SPONSORS
Eva Braun
Mrs. Jacob Klein
M/M Thomas J. Slakey
FRANCIS SCOTT KEY DONORS
Miss Barbara H. Leonard
M/M Richard D. Weigle
KING WILLIAM ASSOCIATES
Mortimer Adler
Dr. Leon Kass
Isabelle Simpson
Rev. J. Winfree Smith
M/M Edward G. Sparrow

M/M Douglas Allanbrook
Roy Armstrong
M/M Laurence Berns
M/M David Bolotin
Frances Boyd
Marjory Bryan
The Collegian
Geoffrey Comber, Sr.
Michael Comenetz
Ethelyn Dodson
George Doskow
William B. Dunham
Janice Easterday
M/M Charles Elzey
Howard Fisher
M/M Harvey Flaumenhaft
Richard Ford
Harry Golding
Marianne Guessford
M/M Simon Kaplan
M/M Louis N. Kurs
Eric Kyle

M/M Nicholas Maistrellis
Mrs. Chaninah Maschler
Theresia McGuire
Kelton McKinley
Ingrid Miller
Caryle Mills
M/M Benjamin Milner
Marilyn Mylander
Leanne Rinder
M/M Robert Schmidt
Rev/M W. Kyle Smith
Student Polity
Ruth Sutphin
M/M Bert Thoms
M/M James Tolbert
Beate Ruhm Von Oppen
M/M Curtis Wilson

Parents

PRESIDENT'S COUNCIL
Anonymous
Mrs. Lee D. Gillespie
Mrs. E. T. Hankamer
ST. JOHN'S SPONSORS
M/M Lester Fant
M/M R. H. Rosenberg
Mrs. G. R. Wetlaufer
FRANCIS SCOTT KEY DONORS
Dr/M Taullah Bacaj
Dr/M James Gamble
M/M John K. Goodwin
M/M James Mackey
Dr/M Frank Santamour
Dr/M Lawrence Silver
Leonard Swett
M/M James Villere
KING WILLIAM ASSOCIATES
Eugenia Brasacchio
Mrs. Esther Bromberg
M/M Richard Davis
Dr/M Leonard Dourmashkin
M/M George Dudik
Dr/M Roger C. Duvoisin
Dr. Joseph Geiger

D. L. Gillespie
M/M James L. Highsow
M/M Robert Loevinger
Mrs. David Long
M/M Glenn Nordin
M/M Lee Preston
M/M John Rossoni
M/M Don Schanche
M/M Henry Schultz
M/M Spencer Scott
M/M Roger Steers
M/M Bernard Walley
M/M William Wright

Miriam Acciani
Mrs. H. Boynton Adler
M/M Burleigh Anderson
W. O. Anthony
M/M James Bahus
Margot Bell
Dr/M Richard Berkowitz
Theodore Birnbaum
Chapman Burk
Mary Carnes
M/M John S. Coulson
Mrs. Joya Cox
M/M Burton Dempster
M/M John Dink
Edwin Dwyer
Mrs. Leticia Eckerle
M/M Myron Eisenstein
Elizabeth Farquhar
Henry H. Fineberg, M.D.
M/M Robert Forrest
John C. Fry
M/M C. Eugene Goin
Murray Greene
Dr. A. A. Hartman
M/M Ichiro Hasegawa
Alfred Heiniger
Cdr/M James Hendry
Mrs. Ethel Hoberman
M/M Arthur Hockman
M/M Simon Horovitz
Mrs. Janet N. Joras
Rosalynd Klipper
M/M Frank Kneisl
M/M Nathan Korshin
Dr. Joseph Kulp
M/M David LeGallee
Mrs. Ida Lenihan
Jack K. Levy
M/M Otto Lindermayer
M/M Eugene Lippman
M/M Edward Mahler
Crd/M Eric McVadon
M/M Robert L. Miller
M/M Dan Montemayor
Mrs. S.P. Morosoff
Mrs. Robert Pegram
Richard N. Pierson, Jr. M.D.
John Quesenberry
M/M B. Carter Randall
M/M J. Richard Reid
M/M Herbert Rosenberg
M/M Salvatore Scali
Mrs. Lois Schaubert
M/M William L. Schmidt
M/M Frank P. Schuld, Jr.
M/M Edward K. Smith
M/M Harry M. Smith
Mrs. Barbara Spector
Dr/M Van Spruiell
Dr/M Thomas Tamlyn
M/M Peter Tullier
Dr. Franz Von Lichtenberg
M/M Robert Weis
Dr. R.F. Whalen
M/M Arnold Zlotoff

Friends

PRESIDENT'S COUNCIL
Ralph E. Campbell
Mrs. Clyde Clapp
Elizabeth Gemp
Mrs. Herman Hodgson

F. R. Katz
Donald McLennan
Mrs. Charlotte Rosenthal
ST. JOHN'S SPONSORS
Charles Feldstein
Mrs. Raymond V. Heelan
William H. Moore III
Dr. Philip Myers
FRANCIS SCOTT KEY DONORS
Miss Anna Mantz
KING WILLIAM ASSOCIATES
Mrs. George M. Austin
M/M John Baer
Mrs. Levin C. Bailey
Prof/M Hansen Ball
M/M Henry Barton
George Benson
Robert J. Bowen
Alexander S. Cochran
M/M William Hammerschmidt
M/M Walter Hardisty
M/M John C. Henry
Capt/M Robert F. Hunt
M/M David Jackson
Mrs. Remsen Johnson
Reverdy Johnson
Richard Johnson
Robert Lawrence
Stanley Lemon
Margaret Leonard
M/M Bernard Locker
Mrs. Henry Maling
Dr. Dorothy Noble
M/M Stanley L. Pearl
Dr. Thomas Pullen, Jr.
M/M Woodward Rich
Dr. Frank Rumore
Edith Sadler
Margaret Schwartz
J. Millard Tawes
Mrs. Robert Tennant
Ira Weiss
Mrs. John Whitridge
M/M George B. Wood, Jr.
Margaret Worthington
Virginia Worthington
William I. Young

Dr/M Sigmund Amitin
M/M A. K. Armitage
Mrs. Dorothy K. Bagby
Col & Mrs. James Barrett
Prof/M William Battin
M/M G. Jack Bauer
M/M William Bayliff
M/M Vincent Bellezza
Mrs. George Beneze
M/M William Berry
Dr/M Paul Berson
Mrs. Doyle Borchers
Charles Boyle
Mrs. Robert E. Brady
Donald Brill
Mrs. H. Griffin Bullwinkel
Mrs. Frances Burton
Dr. & Mrs. Harvey Butt
M/M Charles Butterworth
Calvert Fire Insurance Company
Caritas Society
M/M Joseph Carton
Eugene Christin
Arthur E. Clark
M/M Richard A. Colton
Mrs. Giles B. Cooke
M/M John Cooper
Dr. Richard Cox
Mrs. Wilbur F. Coyle, Jr.
M/M William Cronin
Ronald Daren
Mrs. Annie Dashiell
Robert Daugherty
Charles Demorest
M/M R. Samuel Dillon
Elizabeth Dobbs
M/M Alex Donner
M/M Paul N. Dowling
Karen Easley
Bruce Eberwein

M/M Robert O. Felter
M/M Paul E. Felton
Don Fredericksen
J. Roger Fredland
Mrs. James Galloway
Ann Gick
Elizabeth Goldoftas
Albert Goodman
Capt/M Edwin G. Greenberg
Raymond Greiner
Dr. Eugene Grethen
Leo W. Hahn
M/M Karl Haigler
Capt/M Henry Hall
Ava S. Harrison
Mary Louise Hicks
Grace P. Hillard
Richard Hillman
R/Adm. & Mrs. John Hines
Mrs. Jack Hoffberger
George Hoffman
Karen Holland
John Hornberger
Judith Hudacek
Robert Irrmann
Nathalie Johnson
Katherine Kibler
Elizabeth Kimpton
M/M Herbert Kinsolving
Edward Knight
M/M William Kristol
M/M R. E. Kuniholm
Land Planning Services
Mark Laster
Mrs. John Layng
Mrs. Walter L. Lears
Kathleen Leibe
Dr/M Nathan Leonard
M/M Gordon S. Ley
M/M Nathan Lipsetts
Mrs. John W. S. Littleton
Robert Ludlum
Mrs. James Lutting
Carolyn Macleish
Harriet Maling
M/M H.C. Marsh
Dr. J. W. Marsh
Capt/M W. A. P. Martin
J. R. McCrone
E. Bates McKee
Mrs. Millicent Mileto
M/M Bruce Morgan
Zola E. Morton
Mary Moss
M/M James L. Mulhern
M/M Ralph Mulhollen
M/M Kent R. Mullikin
Shelley Murphy
Donald Myers
Robert C. Natale
Peter A. Nearing
Ruth Newton
Lydia Nolan
M/M Harold Nutt
Mrs. Irving T. Ochs
M/M Daniel C. Olson
Capt. Philip R. Osborn
M/M Boyd Patterson
Cecil Poore
Prof. Thomas Prufee
Mrs. Gwen Rector
Dr/M Gary Richardson
M/M Robert W. Rivard
Gen/M L. B. Robertshaw
Mrs. Archibald Rogers
M/M G. G. Rohwer
M/M R. H. Rosenberg
Wolfgang Rosenberg
Elerk Rosenbloom
Dr. John T. Russell
M/M William Russell
Sadlers Hardware
M/M Edward Satterthwaite
David Schirra
Mrs. Irene Schumacher
Rev/M Winslow Shaw
M/M J. Robert Sherald
Abram Shulsky

Mrs. Stella Spicknall
Mrs. Harry Starkweather
Robert L. Stone
Hubert Strange
M/M Earl G. Swafford
Three Centuries Tours
M/M John Q. Tilson
Mrs. Reginald Truitt
Mildred Turner
Capt/M V. V. Utgoff
Dr/M Stuart H. Walker

Thomas West
Rev/M John Wheeler
Mrs. John C. White
Mrs. Edith Whiteford
Mrs. D. Ellwood Williams
M/M Seymour Wolf
M/M Glenn Wolfe
M/M William Wright
Harold Zalesch
Mrs. Lucile T. Zerbe

Hedwin Corporation
Hendersen-Webb, Inc.
Hendericks, William B.
Herald Mail Company
Hess, Thomas B.
Home Federal Savings & Loan Assn.
Houghton-Mifflin
Howell Foundation
Inland Steel-Ryerson Foundation
International Business Machines Corp.

International Harvester Foundation
International Telephone & Telegraph
Irvington Federal Savings & Loan Assn.

Jones, Frank S.
Kelly-Springfield Tire Company
Kemp Manufacturing, C.M.
Kennecott Refining Corporation
Kiplinger Foundation
K-Mart
Knott Brothers Foundation
Koppers Company
Kraft, Inc.
Kronheim Company
Lacy, Joseph J., Inc.
Lalley, John S.
LaPides Brothers Foundation
Legg Mason Wood Walker
Leibensperger, Elmer W.
Lever Brothers Company
Levy, Lester S.

Liberty Mutual Insurance Company
Loden, Daniel J.
Lowe's Charitable Educational Foundation
Lyon, Conklin & Company
Macht Foundation, Morton & Sophia
Mack Trucks, Inc.
Malco Plastics
Manekin Services Company
Manhattan Store
Martin Foundation, Glenn L.
Martin Marietta Corporation
Maryland Casualty Company
Maryland Fiber Corporation
Maryland Ribbon Company
McArdle Printing Company
McCarthy-Hicks, Inc.
McLean Contracting Company
Mechanic, Mrs. Morris A.
Mercantile Safe Deposit & Trust Co.

Merck Company Foundation
Merrill Lynch Pierce Fenner & Smith
Miller, Milton H.
Minnesota Mining & Manufacturing Co.
Montgomery County Bankers Assn.
Monumental Corporation
Morris Foundation, William T.
Nabisco
National Permanent Federal Savings
National Savings & Trust Company
Nationwide Foundation
Naylor, Henry A.
Naylor, Lawrence P.
News American
New York Life Insurance Company
Noxell Foundation
NUS Corporation
O'Brien Corporation
Owens-Illinois Fund
Penney, J. C. Company
Peoples Life Insurance Company
Pepsi-Cola Bottling Co. - Annapolis
Pepsi-Cola Bottling Co. - Cumberland
Pepsi-Cola Bottling Co. - Salisbury
Pepsico Foundation
Perpetual Federal Savings & Loan Assn.
Pinkertons
Pittsburg-Des Moines Steel Company
Pizza Hut
Potomac Edison Company

Potomac Electric Power Company
Potts & Callahan
PPG Industries Foundation
Preston, Wilbur D.
Price Associates, T. Rowe
Procter & Gamble Fund
Progress Federal Savings & Loan
Provident Savings Bank
Prudential Insurance Co. of America
Raleigh Stores Corporation
Ramsay, Scarlett & Co.
Reliable Stores
Riggs, Counselman, Michaels & Downes
Rob Roy Foundation
Rockport Fund
Romper Room Enterprises
Rosedale Federal Savings & Loan
Rouse Company
Ruzicka, Joseph, Inc.
Saco Supply
Safeway Stores
Savings Bank of Baltimore
Schenuit Foundation, Frank G.
Schluderberg Foundation
Schmidt Baking Company
Schnabel Foundation Company
Seaboard Steel & Iron Corp.
Seagram & Sons, Joseph E.
Security Title Guarantee of Balto.

Seney Company, J.M.
S & H Foundation
Shapiro Brothers Charitable Foundation
Sherwood, John R.
Signode Foundation
Southern States Cooperative
Standard Motor Products
Standard Oil Co. of Ohio
Sterling Drug
Stieff Company
Suburban Propane Gas Corporation
Sun Life Insurance Company
Tate Industries
Thiokol Corporation
Title Guarantee Company
Tuerkes-Beckers
Union Trust Company of MD
United Parcel Service Foundation
U.S. Fidelity & Guaranty Company
VanSant Dugdale & Company
Vermont Federal Savings & Loan Assn.
Virginia Paper Company
Vulcan Materials Company
Ward Machinery Company
Warner Fruehauf Trailer Company
Washington Gas Light Company
Waverly Press
Western Publishing Company
Westinghouse Electric Corporation
Weyerhaeuser Company Foundation
Whiting-Turner Contracting Company
Woodward & Lothrop

Alcoa Foundation

*American Express
*Amoco Foundation, Inc.
Amoco Corporation
Annapolis Banking & Trust
Annapolis Federal Savings Loan
*Armstrong Cork Company
*A.S. Abell Foundation
*Bank America foundation
Capital City Savings & Loan
*Carrier Corporation Edn.
*Carter - Wallace, Inc.
Celanese Corporation
*Coca-Cola Company
*Connecticut Insurance
*Connecticut Mutal Insurance
Continental Bank
C & P Telephone
A. B. Dick Foundation
*Dow Chemical
*Ensign-Bickford Foundation
Equitable Life Assur.
ETC Charitable Trust
*Exxon Education Foundation
Farmers National Bank
Ford Foundation
*Ford Motor Company
Mr. & Mrs. Leo W. Friedenwald Foundation
The Gainey Foundation
General Elevator Company
*General Mills Foundation
Herman and Ruth Goodman Foundation
*Goodyear Tire & Rubber Company

*Grace Foundation
Guttman Foundation
Hallmark Insurance
Hechingers
Household Finance
The Hodson Trust
Hughes Aircraft
*IBM Corporation
*INA Foundation
C. Markland Kelly Foundation
*Kimberly-Clark
John Leidy Foundation
John D. Lucas Company
Maryland National Bank
McGraw & Simmons
Andrew W. Mellon Foundation
*Merck Company Foundation
*Metropolitan Life Foundation
Mills Liquors
*Mobile Foundation
Mullen & Sullivan
*Northwestern Mutual Life Insurance Company
C. V. Nosby Company
Jonathan S. Patrick Foundation
*Peat, Marwick, Mitchell
Walter G. Ross Foundation
*Sandoz, Inc.
Fayez Sarofim
Sears & Roebuck
Sheridan Foundation
*Singer Company Foundation
*Sinorne Foods, Inc.
Slakey Brothers
*Stanadyne, Inc.
*Standard Oil Company
*Times, Inc.
*Time, Inc.
Travelers Insurance Company
United Trust Company
Westminster Foundation

Corporations and Foundations

*Matching gifts

ASSOCIATION OF INDEPENDENT COLLEGES IN MARYLAND, INC.

AAI Corporation
Abbott Laboratories
Acme Markets
Adell Plastics
Airco
Air Products & Chemical
Albert Gunther, Inc.
Alcolac, Inc.
Alexander & Alexander
Allied Chemical Corporation
Allied Contractors
American Airlines
American Brands
American Cyanamid
American National Bldg. & Loan
American Standard
American Telephone & Telegraph Co.
Amstar Corporation
Arlington Federal Savings & Loan Assn.
Armco Steel Corporation
Arthur Andersen & Company
Arundel Corporation
Arundel Federal Savings & Loan Assn.
Atlantic Cement Company
Augusta Savings & Loan Association
Baker, Russell T. & Company
Baker, Watts & Company Foundation
Baltimore Life Insurance Company
Baltimore Spice Company
Barton, Duer & Koch Paper Company
Barton-Gillet Company
Beachley L. Furniture Company
Becton, Dickinson Foundation
Bendix Corporation
Beneficial Management Corporation
Benson, L. A. Company
Best Products Company
Blake Company
Bond Federal Savings & Loan Assn.
Borden
Bowman, Donald E.
Bristol-Meyers
Brooks, Rodney J., Jr.
Brown, Alex & Sons
Brown, Frank D., Jr.
Brunswick Foundation
Calvert Savings & Loan Assn.
Camp Manufacturing Company
Campbell Foundation, Harry T.
Canton Company of Baltimore
Carey Machinery & Supply
Carrollton Bank of Baltimore
Cecil National Bank
Celanese Corporation
Central Savings Bank
Chesapeake Life Insurance Company
Chessie System
Christhilf, S. M. & Sons
Churchill Distributors
Cities Service Foundation
Citizens National Bank
Coca-Cola Company
Columbia Federal Savings & Loan Assn.
Columbia Gas Systems
Community Savings & Loan
Connecticut Mutual Life Insurance

Container Corporation of America
Continental Insurance Companies
Coopers & Lybrand
Crown Central Petroleum Corp.
Cumberland Cement & Supply Company
Cumberland Steel Company
DeFranceaux Realty Group
Denton National Bank
DeVilbiss, Charles B., Company
Diamond Shamrock Corporation
Dick A. B. Company
Dixon Valve & Coupling Company
Dow Jones & Company
Drug Fair
Dun & Bradstreet
Wasco Corporation
Eastmet Corporation
E.I.L. Instruments
Eliasberg Fund
Equitable Trust Company
Fairchild Industries Foundation
Fairview Federal Savings & Loan Assn.
Farmers & Merchants Bank of Hagerstown
Fidelity & Deposit Company of MD
Firestone Tire & Rubber Company
First Federal Savings & Loan, Cumberland
First Federal Savings & Loan, Hagerstown
First Maryland Foundation
Fisher Scientific Company
Flanigan, P. & Sons, Inc.
Flanigan, Patrick V.
Flintkote Company
Food Fair
Ford Motor Company Fund
Fraternity Federal Savings & Loan
Frenkil Foundation, Victor Garfinckel's
Garrett, Harrison
GEICO
General Elevator Company
General Foods Fund
General Refractories Company
Germania Federal Savings & Loan Assn.
Giant Food Foundation
Gillett Company Research Institute
Golden Ring Savings & Loan Assn.
Goodall Semi-Metallic Hose & Mfg.
Government Services Savings & Loan
Grace, W. R. Company
Graham Fund, Philip L.
Graybar Electric Company
Green Charitable Foundation
Hagerstown Bookbinding & Printing Co.
Hahn's
Haines & Company, J.J.
Hancock Mutual Life Insurance, John
Hardee's Food System
Harsco Corporation Fund
Hecht, Mr. & Mrs. Robert E.
Hecht Company
Hecht Foundation, Moses S. & Blanch H.
Hecht-Levi Foundation

III Alumni Fund

A. Alumni Fund results for the past two years:

	1977-78	1978-79
Alumni Donors	755	573
Parent Response	24.8%	18.3%
Average Gift	\$99	\$112
Total Fund	\$74,966	\$64,077

B. Top 20 Classes (10 or more members):

Percent	Amount
1. 1945 - 46.7%	1947 - \$13,495
2. 1930 - 38.7%	1929 - 4,235
3. 1941 - 37.5%	1946 - 3,645

4. 1929 - 37.1%	1964 - 2,375
5. 1932 - 36.0%	1948 - 2,260
6. 1921 - 35.7%	1945 - 1,875
7. 1925 - 33.3%	1944 - 1,840
8. 1942 - 33.3%	1932 - 1,745
9. 1977 - 32.6%	1931 - 1,640
10. 1927 - 31.6%	1950 - 1,625
11. 1931 - 29.8%	1963 - 1,600
12. 1944 - 28.8%	1949 - 1,461
13. 1923 - 27.8%	1967 - 1,205
14. 1946 - 26.5%	1930 - 1,195
15. 1950 - 26.5%	1941 - 1,146
16. 1947 - 25.5%	1962 - 1,125
17. 1958 - 23.1%	1943 - 1,110
18. 1955 - 22.5%	1917 - 1,076
19. 1959 - 20.0%	1942 - 1,035
20. 1951 - 19.2%	1937 - 1,025

Class Lists

The alumni and alumnae below contributed to St. John's in 1978-79, some of them more than once. Their gifts were for a variety of purposes. The percentages and dollar amounts are only for gifts to The Alumni Fund (unrestricted gifts).

Names in italics are of those people in whose memory gifts were made, or for whom special endowed funds have been set up. Income from these funds provides a perpetual gift to the College.

A word about the letter notations and numerals which accompany some of them: the letter "c" preceding a name indicates class captain; letters following names indicate special gift categories: "K" - King William Associate (\$100-249); "F" - Francis Scott Key Donor (\$250-499); "S" - St. John's Sponsor (\$500-999); or "P" - President's Council (\$1,000 or more). The numerals in parentheses show the number of years the donor has qualified for any special gift category. The letter (H) indicates honorary alumnus.

1832
Dr. William Brewer
1847
John Mullan
1874
Frederick W. Brune
1875
Charles G. Mantz
Blanchard Randall
1876
Robert F. Maddox
1880
Walter I. Dawkins
1889
Charles H. Schoff
1895
Rev. Enoch H. Thompson
1897
Class of 1897
1898
Class of 1898
Dr. Philip H. Edwards
1899
Rev. William L. Mayo
Ridgely P. Melvin
1902
Dr. W. Oscar La Motte
1903
Drew H. Beatty
Leroy T. Rohrer
Amos W. W. Woodcock
1904
John M. J. Hodges
1905
Rev. Benjamin D. Chambers
1906 50% \$50
E. Earl Hearn
Richard H. Hodgson
Alfred Houston
Dr. Amos F. Hutchins
Henry F. Sturdy
1907
John T. Harrison
M. Keith Neville
1908
Dr. George M. Austin
Charles H. Schuster
J. Graham Shannahan, Sr.
1909
Clarence T. Johnson
Col. Robert E. Jones — P(6)
Col. Harrison MacAlpine
1910
Roscoe E. Grove
1911
L. Claude Bailey
Clarence L. Dickinson
Clifford L. Johnson
Dr. Thomas Parran
1912 40% \$110
Philip Alger
William Lentz
Benjamin Michaelson, Sr. — K(11)
Raymond E. Staley
1913
Robert A. Tennant
Dr. Robert S. G. Welch
1914 50% \$245
Claggett C. Dorsey
Elwood O. Milburne — F(5)
Wilmer S. Phillips
John T. Tucker
1915 13% \$50
Wilbert L. Merriken
1916
George Davidson, Jr.
Robert O. Jones
Col. Thomas W. Ligon
Col. Guy D. Thompson

1919
Dr. Robert A. Bier
1920 20% \$220
John D. Alexander, Sr. — K(11)
Reginald F. Hall
Horatio Ridout
1921 36% \$80
Robert F. Duer
William H. Y. Knighton, Jr.
John H. E. Legg
William P. Maddox
Elwood E. Schafer
Luther S. Tall
Richard H. Torovsky, Sr.
Thomas B. Turner — K(11)
1922 8% \$25
John W. Everett
Willis H. White
1923 28% \$307
Paul L. Banfield
William C. Baxter
Charles W. Keefer
John F. Layng, Jr.
William S. Morsell, Jr.
c-S. Paul Schilling
Frederic C. Stecker
Carlton E. Wich — K(11)
Calender F. Winslow
1924
H. Boyns MacMannis
1925 33% \$50
H. W. Eliason
Fred H. Flounders
H. Monroe Helm
J. Thomas Ritchie
1926 30% \$280
H. Wayne Carrick
Wilbur F. Coyle, Jr.
A. Morris Cunningham
c-James J. Dugan — K(7)
Stanley McComas
Arthur Townshend, Jr.
Jiri F. Vranek
Henry F. Wegner — K(2)
1927 32% \$460
Henry B. Clark
c-Frank C. DeSantis — K(8)
Charles W. Haas
Elmer M. Jackson, Jr.
Lee H. Nichols, Jr. — K(3)
Frederick L. Smith — K(4)
W. R. Williams — K(2)
1928 19% \$375
David F. Crowley
James F. Miller — K(1)
c-J. R. Roseberry
Louis L. Snyder — K(8)
Franklin T. Willing
1929 37% \$4,235
Granville Q. Adams
Everett R. Amos — K(4)
John W. Boucher
Richard W. Comegys
Harold E. Cross — K(2)
c-William A. Gross, Jr. — F(10)
S. W. Hearne
Lewis A. Hester
Patrick D. Keating — K(7)
Lauriston L. Keown — K(6)
Carl G. Merkel — K(6)
Reginald C. Orem
William S. Walls — K(2)
Charles R. Zimmerman — P(10)
1930 39% \$1,195
Walter S. Baird — K(4)
William H. Conca — K(11)
Edward J. Dwyer — S(10)
David Jenkins
J. Sprightley Kelly — K(9)

Robert J. Klingenburg — K(8)
Arthur E. Landers, Jr. — P(6)
Claxton J. O'Connor — K(4)
Matthew O'Neil
Lester H. Palmer — K(1)
Albert I. Rusterberg
c-G. Newton Scatchard
Charles S. Smith
1931 30% \$1,640
J. W. T. Armacost
Charles E. Athey
William F. Blake
Philip I. Bowman — K(6)
Samuel P. Chew — K(9)
Henry A. Czelusniak
Matthew S. Evans
Snowden J. Fields — K(11)
Lowden Hoff — K(4)
Edward A. Kimpel, Jr. — K(9)
James King — K(2)
c-William J. Klug, Jr. — P(11)
Richard C. Mottu — K(7)
William W. Quinn
Rudy Schmick — F(9)
1932 36% \$1,765
William B. Athey — P(11)
Joseph L. Bean — F(10)
Richard F. Blaul
Robert L. Burwell, Jr.
Hon. James F. Campbell — K(9)
James W. Crabbe
William F. Cullom
Lee A. Gordy
Philip L. Lotz
Walter C. Mylander, Jr.
Richard H. Pembroke, Jr. — K(7)
Charles Pforr
W. T. D. Pumphrey — F(4)
Charles S. Richardson
Henry S. Shryock, Jr. — K(3)
c-C. Vernon Williamson — K(6)
Robert G. Woodman — K(1)
Sterrett Day Woods — K(2)
Fred Yerkes, Jr.
1933 6% \$95
Henry M. Cooper, Jr.
C. Gilbert Hill
Walter H. Hoffmeister
J. H. Fielding Jukes
William A. Percy
1934 20% \$790
c-John H. Engel, Jr. — K(4)
Edward E. Gray — K(1)
Robert L. Jones
William B. Matthews, Jr.
Anthony F. Mileto — P(7)
Lewis E. Scheffenacker
John H. Shea
Robert A. Sindall, Jr. — K(1)
Gust Skordas — K(1)
Austin William Winston
Horace W. Witman — K(3)
1935 8% \$650
Melville L. Bisgyer
Walter Evers — K(10)
Dalton M. Welty — S(11)
Frank K. Wilson
1936 12% \$196
Lawrason L. Crane
Samuel M. Ivrey — K(3)
Harry Luz
c-Cyril R. Murphy, Jr.
William W. Smith, Jr.
Charles T. Westcott
1937 16% \$1,025
Harold L. Brooks
Charles D. Hyson
John B. Owens
Albert F. Patrick — K(1)
Alan F. Pike — K(3)
Isadore Scher
Edward C. Sommer — F(4)
Bertram E. Spriggs — S(9)
1938 13% \$585
Louis Bachmann
c-Jac H. Bushong — K(2)
George Tyler Coulson
Israel Greengold
R. Warren Hammann
Philip A. Meyers, II
J. S. B. Middleton
William C. Owens
E. Peyton Ritchings
Julius Rosenberg — F(11)
William T. Ross
Francis J. Townsend, Jr.
1939 13% \$550
Frank B. Bauer
James E. Boyle — K(2)

C. Thomas Clagett, Jr.
Thomas L. MacNemar — F(3)
Dr. John O. Neustadt
Samuel Schenker
Malcolm Silver
Lloyd F. Taylor — K(6)
1940 8% \$170
Wilbur Matz
Robert H. Reynolds — K(2)
1941 38% \$1,146
Lewis M. Alexander
James H. Clark — K(8)
Paul R. Comegys — K(2)
Henry D. Cubbage
Bruce Graybeal — K(1)
T. Lansdale Hill — F(11)
Albert Jaegglin
c-George McDowell — K(7)
Vernon M. Padgett — F(3)
1942 33% \$1,035
Robert C. Allen — F(6)
Warren Bomjhardt — K(4)
Francis E. Burroughs — K(3)
Joseph C. Hofmann, Jr. — K(3)
Bryce Jacobsen
Journet Kahn
c-Thomas Parran, Jr. — K(3)
Albert A. Poppiti
William D. Rendall — F(10)
C. Robert Sutton
A. Chesley Wilson, Jr. — K(2)
1943 18% \$1,110
Burton Armstrong
c-Edward H. Grubb
Ogden Kellogg-Smith
Francis S. Merman — P(9)
Milton Perlman
Thomas M. Runyon
Alexander L. Slafkosky — K(3)
H. Willard Stern
1944 29% \$1,840
Anonymous
William H. Brubeck — K(5)
Edward B. Cochran — K(8)
Vernon E. Derr
David Dobree — P(9)
Carl S. Hammen
Alexander Koukly
Casimir T. Krol
George Levine
Thaddeus E. Prout
Donald P. Ruhl
Harrison Sasscer
Haven E. Simmonds — K(11)
John C. Smedley
Robert Snower
Howard L. Sorenson
Peter Wolff
1945 47% \$1,875
Stephen W. Bergen — K(3)
Joseph P. Blocher
George Brunn — K(4)
c-George Cayley
Robert O. Davis
Duane K. Furbush
William A. Goldsmith
Christian A. Hovde — F(4)
Robert E. John
Michael C. Keane — K(2)
Ralph H. Kenney
Arthur D. Kelso, Jr.
William R. Lieudberg
John D. Mack — K(9)
Frank B. Marshall, Jr.
Orsell M. Meredith, Jr.
Edward W. Mullin — S(4)
Charles A. Nelson — K(2)
E. T. Owings — K(2)
Morris Parslow — K(7)
1946 27% \$3,645
Thomas J. Cosgrove
Thomas I. Fulton — F(4)
John J. Lobell — K(9)
John R. Maguire
Vincent W. McKay
Daniel S. Parker — P(8)
James W. Sharp — K(1)
c-Bruce H. Sinkey
James T. Taylor
Charles Van Doren
Peter Weiss — P(9)
1947 26% \$13,495
Victor E. Barton
Stephen Benedict
John Brunn
William P. Elliott — K(2)
Gerald Hoxby
Archer Jones

Joseph Killorin
I. Wendell Marine
William Warfield Ross — K(3)
Mordechai Sheinkman
W. Kyle Smith, Jr. — K(1)
Eugene V. Thaw — P(6)
John Van Doren — K(5)
Robert R. Weiss — (2)
c-George M. Van Sant — K(2)
1948 17% \$2,200
Raphael Ben Yosef — F(1)
Peter J. Davies — K(11)
Donald S. Elliott
Lawrence H. Sherman — K(2)
William W. Simmons — P(7)
L. Wheaton Smith — K(7)
1949 18% \$1,461
Aaron M. Bisberg
c-James W. Conrad
Peter V. V. Hamill, M.D.
Allan Hoffman — K(10)
David B. Rea — F(6)
Philip Allen Scott
Eric A. Teel — K(2)
Mary Weigle — P(5) (H)
Richard D. Weigle — P(5) (H)
David B. Weinstein
1950 27% \$1,625
Jack L. Carr — K(6)
Bernard Clouty
Patrick D. Davis — K(2)
Matson Ewell
W. Bernard Fleischmann — K(1)
Robert L. Goldberg — K(2)
Theodore W. Hendricks — F(5)
Jerome G. Lensner — K(11)
C. Ranlet Lincoln — F(2)
John J. Logue
Thomas J. Meyers — K(5)
George Usdansky
Peter A. Whipple — K(11)
John L. Williams — P(8)
1951 19% \$615
Carl Bertolino — K(1)
D. Michael Brown — K(10)
John J. Coffey
Robert S. Hill — K(1)
L. Donald Koontz
Ross E. Lilly
Robert N. Richman
c-Herman Small
William Sprinkle — K(1)
Thomas J. Williams — K(6)
1952 19% \$603
c-Alvin Aronson
Thomas M. Carnes — F(3)
Martin A. Dyer
John L. Fuller
Charles Kluth — S(11)
Harry M. Neumann
Robert Seelig
George Udel
Warren Winiaraki
1953 13% \$220
William M. Aston
Edward F. Bauer
George K. Garlach
Robert G. Hazo
Paul Heineman
1954 16% \$750
Jesse M. Clark — K(3)
c-James U. Dernehl
Alfred Geier
Bernard E. Jacob — P(7)
Sydney Porter, Jr.
Lawrence Sandek
Samuel V. Stiles, Jr. — K(6)
1955 23% \$279
Lydia S. Aston
Alexandra Culbertson
John Joanou
Dorothy Olim Krone
Paul A. Lowdenslager
Arthur Reisz
Hilyer Gearing Shufeldt
James W. Stone — K(6)
Barbara Dvorak Winiarski
1956 11% \$75
Dale B. Cummings
George E. Sauer
Everett Wilson
1957 17% \$330
Robert S. Bart — P(5)
Cornelia Hoffman Burdette
Arianne Laidlaw
c-J. Burt Siemens
1958 23% \$439
Ernie Adamson — F(9)
Marianne DeCamillis Braun

Annual Giving in Santa Fe, 1978-79

1. Summary of Fund Raising

Purpose	
Current Funds	
Unrestricted	\$1,042,239
Restricted	19,725
Total	\$1,061,964
Capital Funds	
Endowment	76,475
Total Funds Raised	\$1,138,439
Sources	
Board	723,045
College Community	3,399
Alumni	12,428
Parents	19,344
Friends	96,715
Foundations	162,544
Corporations	24,762
N.M.I.C.A.	15,375
Government — NEH	80,827
Total	\$1,138,439

Present and

Former Board Members

Mrs. Bromwell Ault
Mr. and Mrs. J. Burchenal Ault
Mr. Walter S. Baird
Mr. Robert S. Bart
Mr. Richard Burdge
Mr. Jack M. Campbell
Mrs. Walter B. Driscoll
Mr. and Mrs. Walter F. Evers
Mr. Stephen Feinberg
Mr. W. B. Fleischmann
Mr. James H. Frame
Mr. and Mrs. R. Phillip Hammond
Mr. and Mrs. John T. Harrison, Jr.
Miss Harriet Higgins
Mr. Jac Holzman

Mrs. Helen M. Jones
Mr. and Mrs. Daniel T. Kelly, Jr.
Mrs. Julia J. Matthews
Mr. and Mrs. John Gaw Meem
Mrs. Carleton Mitchell
Mr. and Mrs. John D. Murchison
Mr. and Mrs. Charles Nelson
Mrs. Duane L. Peterson
Mr. and Mrs. Adolph W. Schmidt
Mr. and Mrs. Theodore H. Smyth
Mr. J.I. Staley
Mr. Eugene V. Thaw
Mr. and Mrs. A. Paul Thompson
Mrs. Louise T. Trigg
Mr. Karl Van Tassel
Dr. and Mrs. Richard D. Weigle
Mr. and Mrs. Arnold Wells

College Community

Miss Mary Branham
Miss Eva T. H. Brann
Mr. Samuel E. Brown
Mr. and Mrs. Robert M. Bunker
Mr. and Mrs. Don B. Cook
Dr. and Mrs. Wiley Crawford
Mr. John DeJournett
Mrs. Marsha Drennon
Mr. and Mrs. Dean Haggard
Mr. and Mrs. R. Thomas Harris
Mr. and Mrs. Emery C. Jennings
Mr. Philip J. LeCuyer
Mr. and Mrs. Timothy Miller
Mr. and Mrs. Robert Neidorf
Mr. and Mrs. Stanley Nordstrum
Dr. and Mrs. Alfred Pinkerton
Mr. Robert Sacks
Mr. and Mrs. John S. Steadman
Ms. Alfreda Verratti
Mrs. Alice H. Whelan

Parents

PRESIDENT'S COUNCIL

Mr. Marshall L. Austin
Dr. and Mrs. William S. Dye
Mrs. I. F. Laucks
Mrs. Lois T. Liepe
ST. JOHN'S COLLEGE SPON-

SORS
Dr. and Mrs. George A. Fowler

FRANCIS COTT KEY

DONORS
Dr. and Mrs. Harry Everett
Dr. and Mrs. John Lightburn
Mr. and Mrs. Theodore Waddell
Mr. and Mrs. Tine Hsing Wu
KING WILLIAM ASSOCIATES
Mr. and Mrs. Charles E. Barr
Dr. and Mrs. Sheldon Davidson
Mr. and Mrs. James Highsaw, Jr.
Mr. and Mrs. David Ross
Mr. and Mrs. Arthur Sloper
Mr. and Mrs. William E. Sterling

Mr. and Mrs. Sydney J. Baker
Dr. and Mrs. Lyman Brewer
Mr. and Mrs. John F. Buchanan

Mr. and Mrs. John Buchen
Mr. and Mrs. Archibald Callender
Mr. and Mrs. Scott Charles
Dr. and Mrs. Richard S. Claassen
Mr. and Mrs. Sam Drolet
Mr. and Mrs. G. Sterling Dunbar
Mr. and Mrs. DeWitt C. Ellinwood
Mrs. Agnes O. Fansler
Mr. and Mrs. R. W. Faulhaber
Mr. and Mrs. John P. Gavahan
Mr. and Mrs. John C. Gerhart
Mr. and Mrs. George S. Gordon
Mrs. Ursula Gray
Mr. and Mrs. James C. Hall
Mr. and Mrs. Arthur Hemmendinger
Mr. and Mrs. W. K. Jenson
Dr. and Mrs. Robert M. Kemp
Mr. and Mrs. S. S. Khoury
Mrs. Heidi Kingsbury
Mr. and Mrs. William P. Lundy
Mr. and Mrs. Thomas W. Lyman
Mr. and Mrs. John McFalls
Mr. and Mrs. Harold M. Morgan
Mr. and Mrs. Ray D. Pierce
Mr. and Mrs. Morton Rappaport
Mr. and Mrs. Kenneth Richman
Mr. George L. Robson
Mr. and Mrs. R. L. Schwimmer
Mr. and Mrs. Joseph Thompson
Mr. Albert M. Tortolini

Friends

PRESIDENT'S COUNCIL

Odette Aude Trust
Mr. Jacques Cartier
Dr. and Mrs. Dan J. Droy
Miss Nina J. Cullinan
Mr. and Mrs. William Egolf
Mrs. St. John Garwood
Miss Elizabeth Gempp
Dr. Stephen Goodyear
Dr. and Mrs. Rudolph Kieve
Mrs. M. L. McCune
Estate of Thomas Old, Jr.
Mrs. James G. Oxnard
Mr. and Mrs. Melvin H. Pfaelzer
Mr. and Mrs. Frank Sandstrom
Estate of Alexander Wasson
Mr. and Mrs. Charles Weiner

ST. JOHN'S COLLEGE SPON-

SOR
Mrs. Peggy Pond Church
Mr. and Mrs. Henry Clifford
Mrs. Thomas Dillon
Mr. and Mrs. Robin Elverson
Mr. and Mrs. Charles Feldstein
Mr. and Mrs. Kenneth Grubb
Mr. and Mrs. William E. Hughes
Dr. and Mrs. William Jobe
Mrs. Barbara E. Kauffman
Mrs. Susan B. Merwin
Mr. and Mrs. Ralph O'Connor
Mr. and Mrs. Edward C. Roe
Mrs. Sallie Wagner
Mr. and Mrs. Robert Weil
Mr. and Mrs. Grant Wilkins

FRANCIS SCOTT KEY

DONORS
Miss Alice Armstrong
Dr. and Mrs. A. Donald Bell
Mrs. George B. Berger, Jr.
Mr. and Mrs. John Cartwright
Mrs. Margaret Clark
Mr. and Mrs. Wayne Collins
Mr. and Mrs. Abel Davis
Dr. and Mrs. R. Derbyshire
Dr. John B. Hibbs
Mr. and Mrs. Arnold Horwitch
Mr. and Mrs. Gardner Jencks
Mr. L. D. P. King
Dr. and Mrs. Stephen D. Markowitz
Mr. and Mrs. Harvey Mudd, II
Mrs. Forbes Pennycook
Mr. and Mrs. J. M. C. Ritchie
Mr. and Mrs. Richard M. Stern
Mr. and Mrs. Leland Thompson
KING WILLIAM ASSOCIATES
Mr. and Mrs. Richard Abeles
Mr. and Mrs. Harold Agnew
Mrs. Jean Anderson
Mr. Jarratt Applewhite
Mrs. Ruby Armstrong
Mr. and Mrs. Theodore Asplund
Mr. and Mrs. David A. Ater
Mr. and Mrs. Frank Bateman
Mr. and Mrs. Keith Boyer
Dr. and Mrs. Norris Bradbury
Mr. Carl L. Broughton
Mrs. David Chavez
Mr. and Mrs. George A. Cowan
Mr. John O. Crosby

ANNAPOLIS, (Continued)

Alan P. Brockway
c-Joseph M. Green
William Kingsley
Nancy Eagle Lindley
Roberta Markley Kingsley
Blakely Littleton Mechau
Gerald K. Milhollan
Christian Sopher Neumann
1959 20% \$392
Henry D. Braun
Hugh M. Curtler
William F. Gleason
Harvey Goldstein - K(2)
Alice Nelson McEnroe
Robert W. McEnroe
Michael K. Mechau
Carol Phillips Tilles - K(9)
William R. Tilles - K(9)
Barbara Stowe Tower
Diana Hartwick Young
1960 19% \$161
Mark A. Adler
Rosalie Levine Boosin
Joseph W. Fastner
c-Mary Gallagher
John E. Gorecki
Dorothy D. Luttrell
Sarah Robinson Munson
Frank M. Orr
Kendon L. Stubbs

Michael V. Townsell
Charles L. Wolberg
1961 13% \$863
Nancy Clark Adler
Victoria Meeks Blair-Smith
Michael W. Gold - K(6)
John C. Kohl, Jr. - S(7)
Sheela Shah Lampietti
Linda McConnell
Stephen Morrow - K(4)
Eyvind Ronquist
Paul Rosenberg
1962 11% \$1,125
Joseph J. Brenning
Deborah Sollers Fialka
Tina B. Kaplan - K(8)
W. James Klug, III - S(3)
E. Brien Lewis
Edward Mattison - K(5)
John F. Miller
John David Pyle
Howard P. Schiff - S(5)
1963 16% \$1,600
J. Jermain Bodine - S(2)
Eugene J. Brady
William M. Davis - F(2)
Daniel T. Devereux
Alan Dorfman
James A. Houck - K(4)
c-S. David Krimins
Michael P. Moyer
Elliott A. Rosenberg

Peter Silitch
Jed R. Stampleman
Andrew Steiner - S(8)
Ying Chuan Tsien - K(1)
1964 16% \$2,375
Arlene Andrew Banks
William P. Banks
Samuel F. Dunbar - K(4)
Lawrence Feinberg
Miriam Mintz Freilicher
John P. Hetland - F(10)
F. Kay Huebner
David R. Jordan
Robert W. Klug - S(4)
Jeremy Leven - P(1)
Robert L. November - K(11)
Lowell Shindler - K(3)
Judith Laws Wood
Catherine Levin Zaoujal - P(5)
1965 13% \$475
Sharon Bishop - S(4)
Jan Blits
Judith Abrams Bromberg
Jessica Hoffman Davis - F(2)
Milo H. Gibbons
Stephen R. Johnson - K(1)
Sandra Gillmeister Karl
Susan Roberts Leven
C. Grant Luckhardt
James R. McClintock
Craig Mooring - K(1)
Bruce Preston

Edward Weinberger
1966 10% \$192
Robert Axtman
Walter J. Bienemann
Mark B. Bromberg
Ian M. Harris
William N. McKeachie
Judy Millspaugh
Kay Randolph-Back
Frances Borst Wright
1967 17% \$1,205
c-Gay Singer Baratta - K(1)
Sarah J. Bell - K(3)
Judith Shultz Cannon
William F. Church, III
William F. Cone
Helen Hobart Feeley - S(2)
Judith Weber Flemer
Ezra Harris
Robert A. Heiniger
Arthur Kungle, Jr. - K(1)
Mark A. Lindley
Arabelle Davies Luckhardt
Hope Zoss Schladen
Gregory R. Scott
Deirdre Lenihan Sloyan - K(6)
1968 14% \$511
Stephen E. Bach
Luther G. Blackiston - K(2)
Donald A. Booth
Peter Coen
Vicki Davis Cane

John E. Farmer
Maria Whitaker Geissel
Bartholomew Lee - K(3)
Deborah Schwartz Renaut
Gilbert Renaut
Joe Sachs
Isobel M. Schneider
Laurel L. Temple
Lee Reichelderfer Tyner - K(6)
David H. Wigutoff
1969 18% \$556
G. Michael Anthony - K(3)
Meredith Artis Anthony - K(3)
Joseph P. Baratta
Jeffries Cothran, Jr.
Bernard M. Davidoff
Robert B. Davis - K(1)
Richard D. Ferrier
Charlotte Fletcher (H) - K(4)
Andrew Garrison
c-Maya Hasegawa
Martin Kalmar
Thomas Pink - K(1)
M. Richard Stevens
Catherine Allen Wagner
Bryon E. Wall
1970 18% \$387
Maureen Barden
Charles B. Carroll, Jr.
Henry C. Constantine
Melanie Sollog Dunleavy
Donald H. Fielding

SANTA FE, (Continued)

Mr. and Mrs. Georges Dapples
Mrs. Eleanor de Ghize
Mr. Wilbur Denious, Jr.
Mrs. Yvonne Dravo
Mr. and Mrs. Alfred Grant
Mrs. Una Hanburg
Mr. and Mrs. A. H. Hedden
General W. R. Hedrick
Mr. and Mrs. Herman Hoerlin
Dr. and Mrs. Irwin Hoffman
Mr. and Mrs. Henry Hoyt
Mr. and Mrs. Richard H. Jackson
Miss Evelyn Knight
Dr. and Mrs. Paul Kovnat
Mrs. Loraine Lavender
Mr. and Mrs. James R. Lilienthal
Mr. Henry Luce, III
Mrs. Joseph C. McKibbin
Mr. and Mrs. James C. Meem
Mr. and Mrs. John B. Metzenberg
Mr. and Mrs. Richard Michaud
Mr. and Mrs. Philip Naumburg
Mr. and Mrs. Sam Neidorf
Mrs. Trudi Peet
Mr. and Mrs. Arnold Rivin
Mrs. Edgar Rossin
Dr. and Mrs. Karl M. Rottluff
Mr. and Mrs. Arthur Spiegel
Mr. and Mrs. B. R. Suydam
Mr. and Mrs. Robert P. Turner
Mr. and Mrs. John B. Tuthill
Mr. and Mrs. Kirk Tuttle
Mr. and Mrs. Joseph Valdes
Miss Lenke Vietorisz
Mrs. Elsie W. Wardman

Mr. and Mrs. Kenneth Adam
Dr. and Mrs. Lewis E. Agnew, Jr.
Mr. and Mrs. C. I. Alexander
Mr. and Mrs. R. L. Amsden
Mr. and Mrs. Russell Andrews
Dr. and Mrs. Richard M. Angle
Mr. and Mrs. George E. Applegate
Mrs. Jean Archibald
Mr. and Mrs. Harold Argo
Dr. and Mrs. Harris Barber
Mr. and Mrs. David Barton
Mrs. Winabelle Beasley
Mr. and Mrs. Edgar Beckman
Mr. and Mrs. Herbert Beenhouwer
Mr. and Mrs. Robert F. Benjamin
Dr. and Mrs. David Bennaham
Mrs. Ethel Bennett
Mrs. Laurence W. Berger
Mr. and Mrs. Farnham Blair
Ms. Judith Blum
Dr. Audrie L. Bobb
Mrs. Marguerite A. B. Boorman
The Reverend and Mrs. Robert Boshen

Mr. and Mrs. Keith Boyer
Mr. and Mrs. John Boylan
Brother Brendan
Mr. Steven Brenner
Mr. and Mrs. Cecil L. Brown
Mrs. Karen L. Brown
Mr. and Mrs. Jerald Buchenauer
Mr. and Mrs. Sumner Buell
The Reverend and Mrs. Donald L. Campbell
Mr. and Mrs. Bengt Carlson
Mr. and Mrs. Thomas B. Catron, III
Mr. Philip M. Casady
Mr. and Mrs. William P. Casky
Mr. and Mrs. A. D. Cernicek
Mr. David Chang
Mrs. Beatrice Chauvenet
Miss Caroline T. Chavez
Mr. and Mrs. William Chudd
Mr. and Mrs. Allen B. Church
Mr. Hugh W. Church
Mr. and Mrs. Theodore Church
Miss Gertrude Clarke
Mrs. Selina Clauser
Mrs. Annette R. H. Cohen
Mr. and Mrs. Saul Cohen
Miss Virginia Comer
Mr. and Mrs. C. James Cook
Mrs. Mary Lou Cook
Mr. and Mrs. William Cornog
Mr. and Mrs. Theodore Cotter
Mr. and Mrs. John M. Currie
Miss Hope Curtis
Mr. and Mrs. David C. Davenport
Mr. and Mrs. William Davies
Mr. and Mrs. Harry B. Davis
Mr. Jonathan P. Davis
Mr. and Mrs. Peter Dechert
Miss Mary E. Dempsey
Mrs. Flora Dendahl
Mr. and Mrs. K. D. DeLapp
Dr. and Mrs. A. W. Denninger
Dr. and Mrs. W. N. Dixon
Mr. and Mrs. J. B. Donnelly
Mr. and Mrs. Leigh C. Douglas
Mr. and Mrs. Rudolph Driscoll
Dr. Bertha Dutton
Mr. Bruce Eberwein
Miss Ginger Evans
Mr. and Mrs. Julian Evans
Mr. and Mrs. Louie Ewing
Dr. and Mrs. Richard Farquhar
Mrs. Carolyn Ferriday
Mrs. Margaret Flower
Mr. and Mrs. R. T. Follstad
Miss Gail Forsythe
Mr. and Mrs. Paul Frederickson
Mr. and Mrs. Arthur Freed
Mr. and Mrs. Denis Galvin
Mrs. Patricia Gambell
Mrs. Mary Ann Gerber
Mrs. Fabiola C de Baca Gilbert
Mr. and Mrs. H. H. Gilkyson
General and Mrs. Samuel McC. Goodwin

Mr. and Mrs. Loren Gordon
Mrs. Esther W. Gorey
Mrs. H. F. Grand-Girard
Mr. and Mrs. David Greenhood
Mr. and Mrs. Charles T. Gregg
The Gridiron Club
Mrs. Mary E. Grisso
Mr. and Mrs. Martin L. Gursky
Mr. and Mrs. David B. Hall
Mr. and Mrs. Edward T. Hall
Mrs. Mary F. Hall
Mr. and Mrs. Donald B. Hamilton
Mr. Frank A. Hamilton
Mr. and Mrs. Edward F. Hammel
Mrs. Maxwell Harrison
Mr. and Mrs. Earl A. Hassebrock
Mr. and Mrs. Leon Heller
Mr. Stanley Henson, III
Mrs. Mary S. Higham
Mr. and Mrs. John M. Hightower
Mr. and Mrs. Donald Hoard
Mr. and Mrs. George F. Hocker
Mrs. Gene M. Hodge
Mr. and Mrs. W. W. Hunker
Mr. Robert H. Irrmann
Mr. and Mrs. William James
Mr. and Mrs. Thomas Jameson
Mr. and Mrs. Arturo Jaramillo
Miss Barbara W. Jarrell
Mrs. John W. Jarrell
Mrs. Ernest Jones
Mrs. Marjorie M. Kahn
Mr. and Mrs. August Kaiser
Mrs. Darlene Y. Keeley
Mrs. Margaret G. Kelly
Mr. and Mrs. Walter Kerr
Mr. H. F. Kinsey
Mrs. Elizabeth Kingman
Mrs. Eleanor J. Kinsolving
Mrs. Concha Ortiz y Pino de Kleven
Dr. and Mrs. Morton Kligerman
Mr. and Mrs. Sumner Koch
Mr. and Mrs. Hayward Lafferty
Mr. and Mrs. Hubert W. Lamb
Mrs. Marjorie Lambert
Dr. Yvonne Lange
The Reverend and Mrs. Benjamin Larzelere
Mrs. Sara Jane LaSalle
Mrs. Eleanor Lasell
Miss Peggy Lastrup
Mrs. Loraine C. Lavevender
Mrs. Loraine C. Lavender
Mr. and Mrs. Julian Levi
Miss Marion S. Lew
Mr. and Mrs. David Liberman
Mr. George E. Lindsay
Dr. and Mrs. M. S. Livingston
Mr. and Mrs. Anton V. Long
Mr. and Mrs. Bernard B. Lopez
Mr. and Mrs. Owen M. Lopez
Mr. and Mrs. James H. Lorie
Mr. and Mrs. William Lumpkins
Dr. and Mrs. Gilbert C. Luna

Mr. and Mrs. Lamar Lunt
Mr. Ken Macrorie
Mr. W. I. MacGillivray
Mr. and Mrs. John M. Manley
Mr. and Mrs. J. Carson Mark
Mr. and Mrs. Robert H. Martin
Mr. and Mrs. John Masters
Mr. and Mrs. Wayne L. Mauzy
Mr. Bill McAlpine
Mr. and Mrs. Scott McCulloch
Mr. and Mrs. Thomas J. McGreevy
Mr. and Mrs. John McHugh
Miss Bess McKennan
Mr. and Mrs. W. M. McKenzie
Mr. David S. McMillan
Mr. and Mrs. J. Jerome McNally
Mrs. Betty L. Mead
Mr. and Mrs. Melvin Merritt
Mrs. Patricia Metropolis
Mr. and Mrs. T. E. Metzger
Mrs. Carolyn Meyer
Mr. Thomas C. Milne
Mrs. Rosalie K. Mollet
Mrs. Netta de Montaigne
Miss Carmen Moore
Mr. and Mrs. Henry Motz
Mr. and Mrs. John Muchmore
Mrs. Alicia C. Mudd
Mr. and Mrs. Allan R. Murphy
Mrs. Elsa H. Naumann
Miss Mary Navratil
Mr. Guy Neff
Mr. Henry Nelson
Mr. and Mrs. Edward M. Nicholas
Mr. Peter Nimkoff
Mrs. Anne Bateman Noss
Mr. and Mrs. Stanley Noyes
Mr. William Olsen
Mr. and Mrs. Karl Overhage
Mr. and Mrs. William Overstreet
Mr. David Padwa
Mrs. Alice Parrott
Mr. and Mrs. Gene Petcheskey
Mr. and Mrs. Charles Poitras
Mrs. Pauline Pollock
Mrs. Marcella Powers
Mrs. Mary Quinlan
Mrs. Theodora Raven
Mr. and Mrs. Leslie M. Redman
Mr. Richard Reichman
Mr. and Mrs. Anthony Reymont
Mr. and Mrs. S. E. Reynolds
Mr. and Mrs. James H. Richardson
Mrs. Margaret Richardson
Ms. Mary Riedell
Dr. and Mrs. John S. Rinehart
Dr. John B. Roberts
Mr. and Mrs. J. R. Rogers
Mr. and Mrs. L. A. Rogers
Dr. and Mrs. Louis Rosen
Mr. and Mrs. Roy Rosen
Mrs. Edgar Rossin
Mr. and Mrs. John T. Rule

Mr. Sol Sacks
Dr. and Mrs. DeWitt Safford
Mrs. Manuel H. Sanchez
Mrs. Alison Sanders
Mr. and Mrs. Lyle Saunders
Mr. and Mrs. W. A. Sawtell
Mrs. C. Wenzel Schenck
Mr. and Mrs. George Schloss
Mrs. Albert Schmidt
Mrs. A. Donald Scholder
Dr. J. P. Schwitter
Mrs. Katherine Sellers
Mr. and Mrs. J. E. B. Shaw
Mr. and Mrs. Cecil Sherwood
Mr. and Mrs. Robert G. Shreffler
Dr. and Mrs. Philip L. Shultz
Mr. and Mrs. Abe Silver
Mr. and Mrs. L. M. Simmons
Mrs. Phyllis S. Simon
Ms. D. Sklar
Mrs. Benson B. Sloan
Mr. and Mrs. Joseph C. Sloane
Mrs. A. G. Smith
Drs. Carol and Marcus Smith
Mr. Forrest Smith
Mrs. Virginia H. Smith
Mr. and Mrs. R. W. Spence
Mr. William Spight
Mrs. Myrtle L. Stedman
Mrs. Eleanor H. Steinert
Dr. and Mrs. William Stone
The Reverend George Stracke
Mr. and Mrs. Edward Stritter
Mr. Richard Szanyi
Dr. John Talley
Mr. and Mrs. Richard F. Taschek
Mr. and Mrs. Antonio Taylor
Mr. and Mrs. Arthur D. Taylor
Mr. and Mrs. George Theodore
Mr. and Mrs. Lewis E. Thompson
Mr. and Mrs. Edmund W. Thorpe
Miss Susan Tixier
Mr. and Mrs. Alfonso A. Topp, Jr.
Mr. and Mrs. Philip Trost
Mr. and Mrs. S. M. Ulam
Mr. and Mrs. Alan C. Vedder
Mrs. Irene Von Horvath
Mrs. Virginia W. Walden
Mrs. Mary Agnes Wallace
Mrs. Mary Walter
Mr. James P. Ward
Mr. and Mrs. Lucian Warren
Mr. and Mrs. Larry Waterman
Mr. and Mrs. John T. Watson
Ms. Su Isabel Weng
Dr. and Mrs. Herbert Weinstein
Mr. Samuel Weston
Mr. and Mrs. David Weidenfeld
Mr. C. Julian Wheeler
Mr. and Mrs. Lyman C. White
Mrs. Beatrice Douglas Whyte
Mr. and Mrs. Keith Wofford
Mrs. K. Rose Wood
Mr. and Mrs. William H. Zachariasen
Dr. and Mrs. Samuel Ziegler

ANNAPOLIS, (Continued)

Dion Frischer
Ives Wallace Harvey
c-Theda Braddock Hitchcock
Kenneth Joseph
Deborah Warren Kalmer
Susan Rumore Lobell - K(1)
Arthur H. Luse, III
Susan Smith Wigutoff
1971 17% \$345
Jane Goldwin Bandler
Douglas H. Bennett - K(2)
James A. Cockey
Thomas Day
George H. Elias, Jr.
James R. Hill
Judy Kepner Maistrellis
Barry N. Sher
Barbara Sherman Simpson
Harold Stone
V. Michael Victoroff
1972 10% \$802
Bradley C. Arms - S(2)
Ray Boedecker - K(1)
Robin Kowalchuk Burk - K(1)
James M. Burrress
Christine Ferrarini Constantine
Evan M. Dudik
Robert F. Dunleavy
Janet A. Nelson
Jane Silberman Rhoades
Robert Schmidt

Jeremy Whipple
1973 10% \$211
Nancy Boyd
Anne Hawk Fitch
John H. Fitch
Barbara Banks Goyette
Kimi Hasegawa
Robin Chalek Jannes
Jeanne Harrison Mooring - K(1)
Pamela Pratt
Paul M. Rosenberg
Melissa Matthews Sedlis - K(2)
Steven Sedlis - K(2)
c-Jane E. Spear
Jean Bloss Weld
1974 14% \$473
Roger C. Burk - K(1)
Carol V. Calhoun
c-Thomas J. Dolan, Jr.
Richard A. Ferguson
Kathryn Austin Ferrier
Samuel T. Goldberg
Michael C. Jordan
Steven L. Key
Erica Chaney King - K(1)
Claire Kurs Kronsberg
Maria Kayanan Masinter
Edward D. Myers
Michael R. Panter - K(2)
Edmund F. Raspa
Paul E. Szabo

Jeff Victoroff
1975 18% \$729
David J. Ashmore
Nancy Coiner Benjamin
John L. Church
Matthew DeBacker
Michael Dink
Donald S. Feldman
Peter T. Fox
M. Carla Garrettson - K(2)
January E. Hamill
Christopher Hoving
Marion Condon Hustis
Christopher King - K(1)
Nancy Polk King
Elise Knapp
Mary Rogers Kniaz
Peter Kniaz
Sallie Dobreer Raspa - K(3)
c-John Rogers - K(4)
Cary Stickney
Thomas T. Tamlyn, Jr.
Annette T. Tullier
K. C. Victor
Stephen Weber
1976 12% \$154
Deborah L. Brosha
Paula Truitt Davidoff
Richard B. Davenport
Susan Fitzpatrick DeBacker
Joseph DiGeorge

David V. Glass
Jennifer Haggerty
Jonathan K. Hustis
Edward Kaitz
Bernadette Keefe
Leslie Graves Key
Jacob Klein (H)
Edward A. Morris, III
Jane Ogburn
Joan Silver
Andrew J. Wisniewski
1977 33% \$801
Cliff B. Adams
Anonymous
William M. Castner
Deborah Cohen
Girard Bradford Davidson
Robert Elliott
Grant N. Franks
Marlene Strong Franks
Lynne Gately - K(1)
c-Erica Lerner Glass
Frances Goodwin - K(1)
Edward F. Grandi - K(1)
Elizabeth Kocsis Kates
Frank Kneisl
Pamela N. Lobdell
Frances C. Merritt
Andrea A. Miano
Alan Mittelstaedt
Cynthia Dene Nash

Jody Nesheim
Joseph Olson
Julia Perkins
Barry Phillips
Vicki Cass Phillips
Maia Pitsch
Janis S. Popowicz
John Christopher Rote
Carla S. Schick
Carolyn L. Wade
Chela Roy Weiler
1978 12% \$259
Ethan L. Bauman
Janet M. Ehrenberger
Susan Gasser-Wilson
George A. C. Harper
Susan Scott Hunt
Mark W. Jeschke
Ronald W. Kates
Richard Levy
Clinton Dale Lively
Stephen Magee
Amy McConnell
Isabella M. Owen
Stephen F. Perry
Marta A. Stellwagen
David E. Woolwine
1979 (Class not solicited)
Bret Cope - K(1)
GI
Alice Kurs

Corporations and Foundations

Gifts through New Mexico Independent College Association

AT&T Long Lines
Airco, Inc.
Albuquerque Federal Savings & Loan
Albuquerque Gravel Products Company
Albuquerque National Bank
American Brands, Inc.
American Furniture Company
Clinton P. Anderson Agency
Anonymous
Ballen and Company
The Baner Company
William Bayne, "B-Hive"
Borden Foundation, Inc.
Bristol-Myers Fund, Inc.
Capital Bank
Cities Service Foundation
Citizens Bank of Albuquerque
The Coca-Cola Company
Coca-Cola Bottling Company of Santa Fe, Inc.
Connecticut Mutual Life Insurance Company
The Continental Corporation Foundation
R. P. Conway, CLU, State Farm Insurance
Credit Bureau of Albuquerque, Inc.
Deluxe Check Printers Foundation
Eidal International Corporation
First National Bank of Santa Fe
Ford Motor Company Fund
GTE Lenkurt, Inc.
The General Foods Fund, Inc.
General Motors Foundation, Inc.
Graybar Electric Co., Inc.
The Guarantee
John Hancock Mutual Life Insurance Company
Harding Glass Industries, Inc.
Houghton Mifflin Co.
Hybur, Inc.
The Inn at Loretto
International Business Machines Corporation
International Harvester Foundation
International Telephone & Telegraph Corporation
John B. Irick
Dean and Alice Irvin
K Mart Corporation
Robert and Sarah Koch
Kraft, Inc.
Levi Strauss Foundation
Liberty Mutual Insurance Companies
Joe G. Maloof and Company
The Merck Company Foundation
Minnesota Mining and Manufacturing Co.
Montgomery, Andrews & Han-nahs
R.M. Moran
Mountain Bell
Mutual Building & Loan Association
The Nabisco Foundation
Neff & Company

New York Life Insurance Company
J. C. Penney Co., Inc.
Pepsico Foundation
Mary Phelan
Pinkerton's, Inc.
Pizza Hut Foundation
The Procter & Gamble Fund
Prudential Foundation
Public Service Company of New Mexico
Quality Pontiac, Inc.
Rio Grande Valley Bank
Rust Tractor Company
The S & H Foundation, Inc.
Safeway Stores, Inc.
Sandia Laboratories
Santa Fe Automobile Dealers Association
Santa Fe National Bank
Santa Fe Railway Foundation, Inc.
Seven Up Bottling Company, Inc.
Southern Pacific Foundation
Southwest Glass & Glazing, Inc.
Southwest Savings & Loan Association
Standard Motor Products, Inc.
Sterling Drug Co.
Sutin, Thayer & Browne
The Toppino Agency, Inc.
The UPS Foundation
United Savings & Loan Association
Valdes Corporation Paint & Glass
Harold E. and Betty R. Valencia
WH Investment Co.
*Western Electric Fund
Archie Westfall Corporation

Allied School & Office Products Division
American Telephone and Telegraph
Artesanos Imports
Ballen and Company
Big Jo Lumber
Castle and Cooke, Inc.
Gila Electronics
Going Places Travel Agency
The Guarantee
Healy-Matthews
Hewlett-Matthews
Hewlett-Packard
Highland Resources, Inc.
Household Finance
IBM
The Lightning Tree
Montgomery, Andrews & Han-nahs
Mullen and Sullivan
James H. Russell Agency
Santa Fe Motors
Fayez Sarofim and Company
Southwestern Computer Services Time, Inc.
Transamerica Corporation
United States Trust
Vergara Printing Company
AID United Givers
The Vincent Astor Foundation
Edwin J. Beinecke Trust
Robert Sterling Clark Foundation
Continental Airlines Foundation
The Crane Fund for Widows and Children
Arthur Vining Davis Foundation
A. B. Dick Foundation
Dickinson Foundation

Gannett Newspaper Foundation
Kelso Foundation
Jerome and Carrie Hanauer Foundation
Edward W. Hazen Foundation
Houston Endowment
Kiwanis Club of Santa Fe
McGraw Hill Foundation

II Alumni Donors through July 13, 1979

Class of 1968

Augusta Alcy Goldstein
Antigone Phalares Moore
Marilynn Scott
Lester Q. Strong

TOTAL \$48

Class of 1969

Frank Adams
Margaret Blum
Daniel Cleavinger
Mack Colvard
Rachel Ann Colvard
William Cromartie
Alexandra Dane Dor-Ner
Raymond Drolet
Rev. Joe Pratt Reynolds
Capt. Carlton Severance
Rev. and Mrs. John Strange
Lee Tepper and Corine Real
Joe Tooley
Michael Zakroff

TOTAL \$920

Class of 1970

W. H. Doleman
Susheila Horwitz
Beth Kuper
Mr. and Mrs. Michael Landry
Mr. and Mrs. Chris Nelson
Gerald Peters
Mr. and Mrs. Douglas R. Shaller

TOTAL \$206

Class of 1971

Sheila Bobbs
Gail Hartshorn Haggard
John Malarkey & Delores Strickland
Amanda Stimson

TOTAL \$1,380

Class of 1972

Joseph Boroughs
Seth Cropsey
Melissa Kaplan Drolet
Glenn Gladfelder
Charlotte Gray
Mr. and Mrs. Anthony Jeffries
Robert Johnson
Susan Deborah Kaufman
Lowell Rundle
Herley Sharp
Peter Volkmer

TOTAL \$810

Class of 1973

Galen & Jena Breningstall
India Williams Clarke
Steven Goldman
Leslie Gould
Mr. and Mrs. Robert M. Hampton
Robert & Barbara Hoople
Mr. and Mrs. Mark Jordan

National Endowment for the Humanities
Peat Marwick Mitchell Foundation
Reader's Digest Foundation
The Riot Relief Fund
The Sears-Roebuck Foundation
The DeWitt Wallace Foundation

Mr. and Mrs. Paul Knudsen
Mr. and Mrs. Michael Mongeau
Joan Paine
Kenneth Richman
Stephen Slusher
Christian Smith
Eric Springsted
Danny Watson

TOTAL \$650

Class of 1974

Mr. and Mrs. David Allison
Mr. and Mrs. Mark Belanger
Sally Bell
Janet Brazier
Jena and Galen Breningstall
Celia David
Alice Ericsson
Elizabeth Goodman
Mr. and Mrs. David Gross
Carl Huffman
Thomas Jelliffe
Donald Merriell
Randal Pair
Rachel Trueblood
Phillip Weathers

TOTAL \$380

Class of 1975

Elizabeth Dain
Claudia Ingram
Leslie Johnson
Mr. and Mrs. George Kmiecik
Kristin Lucas
Nancy Miller
Tom and Moons Myers
Margaret Sheehan
Richard Skaug
Jonathon and Rani Teague
David Wallace

TOTAL \$1,270

Class of 1976

Susan Graham Austin
Khalil Ayob
Dean Blobaum
Mr. and Mrs. David Campbell
Pablo Collins
Gerald Davis
Mr. and Mrs. John Eoyang
Christopher Graves
Charles Greuter
William Hathaway
Carol Highsaw
Bridget Houston
Judy Kistler
Matt Krane
Richard Lightburn
Mr. and Mrs. Victor Mansure
Elizabeth Meiss
Chris Burks & Janet Moody
John Pilcher
David Shapiro
Barbara Skaug

Denise Waxman
Debora Woody

TOTAL \$51

Class of 1977

Larry Clendenin
Steve Corneli
Michael Dubetz
Susan Ferron
Stephanie Forrest
James Gollin
Michael Greer
Andrea and James Ham
Laurie Haskell
Michael Jones
Michael Nolan
Nancy Sample
Jonathon Tyman
Thomas John Walrod

TOTAL \$1,099.76

Class of 1978

Victor Austin
Marion Billington
Ed Bronfin
Mary Ellen Campbell
Mary Classen
Christopher Currin
Randall Fryer
James and Susan Gasser Wilson
Mary Howell
Susan Johnson

TOTAL \$1,276

Class of 1979

Alan Cook
Henry Horsey
Betty Hussander
Dean McCollum

TOTAL \$60

Annapolis Donors

Mr. and Mrs. Walter S. Baird '30
David Denereux '63
Thomas I. Fulton '46
Carla Garretson '75
Ives Wallace Harvey '70
William R. Lieb '45
David Londow '66
Mr. and Mrs. John Merritt '65-'66
Lawrence Sherman '48
Mr. and Mrs. Sam Stiles '54
Eric Teel '49
Theodore G. Wolff '74

TOTAL \$1,683

Graduate Institute Donors

Rachel Ann Colvard
Bruce Ebermeier
Edna F. Frye
Mr. and Mrs. Donald Hamilton
Cecilia Holtman
A. S. Kelso
Mr. and Mrs. Leland Lengal
Renate Lewis
Connie Liser
Frank McGuire
Mr. and Mrs. Jerome Monks
Mary Navratil
Virginia Newlin
George Schloss
Cecil and Bev Smith
Franz Snyder
Megan Tyndall
Ann Yeck

TOTAL \$2,061

Graduate Institute concludes third year here

(Continued from P. 1)

branch of the Graduate Institute, which has been operating for the past 13 years on the Santa Fe campus.

"We were created three years ago from the forehead of our parents in Santa Fe," Geoffrey Comber, institute director in Annapolis, reminded the audience present for ceremonies in the Great Hall.

"We are still under its shield, and the degrees we grant here are, in fact, granted by the Graduate Institute of Santa Fe

under its charter in New Mexico.

"BUT, AS IS often the case with human offspring, this child from the very first summer began to look and behave differently from the parent. These differences have continued and deepened.

"Our programs are identical, but almost all else is different: the climate (I say no more), the environment (desert vs. urban), the customs and traditions ... Finally there is a difference of students, most notably in the fact that many, over a half, of our

members are here for non-degree purposes — not that they won't be pleased and proud to receive it when earned — but their primary purpose is to receive an education, to grow as people and address the everlasting questions of mankind."

Next year Mr. Comber said that it is likely that the Annapolis institute will award its degrees autonomously.

"That will be a cause for a new celebration," he told the three graduates. "But in my mind you will always be special — very

special — because I have come to know you over this and other summers...

"I have seen you change, grow more self-confident, self-proud in the best way, learn to read and think and speak as truly human beings. I have heard one or two of you say you believe your work with us has contributed in no small way to this remarkable and worthy change.

"...BUT YOUR increased power, your new wealth, your fuller lives carry a burden, a proportionately increased

responsibility. Insofar as we have been in some way responsible for a change in you, I enjoin you to bring about a change in those whom your lives touch.

"I am prepared to risk all and say 'any' change for I am so confident that what you have engaged in here cannot but make a person better, that any change you try to bring about in others will be for the better."

Michael Littleton delivered the invocation and benediction, and two other tutors — Harry Golding and David Starr — assisted in hooding the graduates.

EAST AND WEST

(Continued from P. 2)

project of "recording and Interpretation of Rock Art at Zuni Pueblo." (And she hastens to explain there is no connection to rock music!)

1973 — Santa Fe

Via Dr. Galen Breningstall comes news of Kit Callender, now Mrs. Tim Martin. After graduation she spent three years in Santa Fe working for the School of American Research as an excavator in the summer, as a bar-tender in the winter; she then spent two years at Eastern New Mexico University in Portales as a student in the physician's assistant program "until it folded." In Portales she met and married Tim, a writer with his M.A. degree in literature. The Martins are now in Oklahoma City, where Kit is a second-year student at the University of Oklahoma College of Medicine Physician's Assistant program. They plan to move back to New Mexico after a year of rotation in the Oklahoma hills, with Tim writing and teaching, Kit practicing primary care.

From Dean Robert Bart we received news that Marcia Greenbaum is now Marcia Wake. She now has a degree in architecture from Rhode Island School of Design; along the way she took two years remodelling an old house to learn about construction. She and her husband are moving to Milwaukee, where he will teach math and she will seek employment in an architect's office.

1975

After investigating international relations at Columbia, David Ashmore will begin studying econometrics at Princeton University this fall. "So after a year rooming with Tom Tamlyn (I don't think he's let anyone down there know he's at Columbia Law School, rising second year), I shall be living with Tom Ash in a house presently occupied by George Anastaplo," he wrote earlier this summer. "What a network Johnnies maintain. I haven't heard of another school whose alums keep together so much."

Paul and Tina (Saddy) Bell (and Joseph) announced recently the arrival on April 9 of a new daughter (and sister), Julia Elizabeth.

Harriet Quesenberry has received her Bachelor of Science degree in nursing science from Catholic University, and plans to take her state boards right away. We wish her much success.

James N. Jarvis has received his medical degree at the University of Vermont College of Medicine and has begun the first of three years of pediatric residency training at St. Louis Children's Hospital, one of the finest children's hospitals in the country. Our warmest congratulations to Jim — a terrific student here at St. John's and one we know will make a great doctor.

From Venice, Cal., comes a fine letter from Sallie Ann Dobreer Raspa, reporting news that Ed, '74, continues his studies at Southern California Institute of

Architecture and is working for a Santa Monica architect, in the latter capacity on what sound like some impressive projects. Sallie is a legal secretary but describes her duties as more those of a legal assistant. The Raspas are living in an old house close to the ocean and are apparently having a ball fixing it up — good experience for an architecture student!

Nancy Polk King writes that she and Chris are in the third and last year of law school and are looking forward to graduation and moving back to Maryland. Chris spent the summer in the District Attorney's Office in Philadelphia, while Nancy did research in mental health law at Chapel Hill.

1976

David Clement is still living in New York City, has just taken his M.A. degree in medieval literature at Columbia, and is now a President's Fellow, with a helpful stipend and free tuition.

Thanks to a marriage on June 28, 1979, it's now Katherine Lufkin Day; the fortunate bridegroom is William Day, a rising sophomore on the Santa Fe campus. Kate will stay in Minnesota until she completes course work for her M.A. degree in religious studies in December. She is studying at the United Theological Seminary of the Twin Cities, "an ecumenical, militantly feminist school whose patron saint is Paul Tillich." In attendance at the wedding were Wesley Uemura, '74, Susan Holton, '77, Winfield Ihlow, '78, Jon Locke, '76, and two current Annapolis students, Beth Baldwin and Ben Smith. Kate sends special greetings to all alumni in seminary.

1977

Grant and Marlene Strong Franks were in Baltimore this summer, as he worked for a law firm and she took a course at Hopkins. They return to Cambridge in the fall, he to Harvard Law School (third and last year), she to work at Harvard's Kennedy School of Government and try to decide what graduate work to pursue. The Franks are very interested in getting Boston-area alumni together for seminars or whatever.

Carolyn Wade and Robert Alan Loring were married on June 2 at the United Church of Christ in Annapolis, where Carolyn was active during her student days. Carolyn and Bob, a University of Maryland graduate, met while they were in a training course to serve with the Bureau of Public Debt of the U.S. Treasury, where both are employed. Following a reception at the Annapolis Hilton, they left for a wedding trip to London.

1978

June brought a most interesting letter from Anne Wallace, now Anne Wallace Effland (Mrs. William), in response to the annual welcome letter we send to each class as it joins the ranks of the alumni. Anne spent some time working, taking courses, and traveling after she left St. John's, and this past May graduated from neighboring Hood College with a degree in history. She and Bill

Effland were married in May, 1978. Anne says her old St. John's friends will know Bill as her boyfriend while she was here. The Efflands live near Morgantown, W. Va., where she works as a manuscript processing assistant in the West Virginia Collection, Archives and Manuscripts Section, of the University of West Virginia Library.

On June 15, in the town of Arosa, Switzerland, Susan Wilson and James D. Gasser, S78, were married. Susan became Swiss by the marriage, and, following Swiss custom, they are now Mr. and Mrs. James D. Gasser-Wilson. The couple are living in Basel, Switzerland.

To the multitude of small-world stories for St. Johnnies can be added one from last month. Following a trip to the Washington Zoo in 90 degree temperature, Phil Chandler, S68, of the Santa Fe faculty, and Curtis Wilson, of the Annapolis faculty, with their separate wives, had settled themselves on a sidewalk cafe opposite the zoo's entrance when Warren Wigutow spotted them from inside. A few minutes later Phil leaped to his feet with "There's a St. John's student from Santa Fe!" The second student turned out to be Beth Gordon, a senior who has transferred back to the Annapolis campus this year. Phil managed to catch Miss Gordon, who lives near the zoo, just as she was pulling her car from the curb.

Warren is now managing Second Story Books on Washington's Dupont Circle, a used and rare book store. He also has just published a long poem in 18 sections, "The Passing," put out by the White Dot Press in Washington.

Victor Gallerano and his wife, now living in Boston, announced recently the arrival of son Joseph, born June 14.

1978

From Leland Giovannelli comes welcome news that she will be teaching this fall at the Commonwealth School in Boston. Last spring she was writing her thesis at Chicago and teaching 5th-8th grade mathematics at a local day school. During the summer she has been tutoring at the Harvard Continuing Education Summer Session and attending the teacher's workshop there.

1979

It wasn't a concert or a lecture which took place in the Great Hall on June 30 but the marriage of Karen M. Anderson, '79, and Fred Borrer, '78. Winfree Smith officiated at the afternoon ceremony whose guests included many tutors, students, and alumni. Evan Cantor, '81, sang, and Karen Wachsmuth, '79 played the piano. Afterwards there was a reception, also in the hall, and a string quartet provided music for waltzing. The Great Hall was decorated with flowers. "We chose the Great Hall for our wedding because we had met at St. John's, and so it was especially dear and meaningful to us," Karen said. The Borrers are residing at 1226A G St., SE, Washington, D.C. 20003,

Introducing the board

Texas businessman, California attorney



STEPHEN L. FEINBERG

A member of the board from El Paso, Tex., is Chicago-born Stephen L. Feinberg.

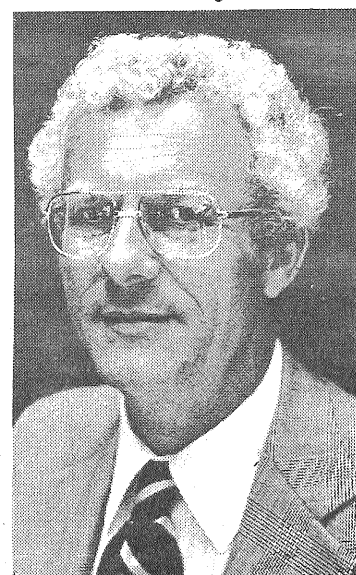
Educated in El Paso, Mr. Feinberg was graduated from the University of Texas with a BBA degree in 1967.

After leaving school he became account executive for Dominick & Dominick in Houston before assuming present responsibilities as president of Dorsar Industries in El Paso.

This is a holding company for El Paso Pipe & Supply Company, El Paso Electrical Supply, EPPSCO Oil Field Supply Company, Vinton Pipe & Steel, Vinton EPPSCO Albuquerque, Vinton EPPSCO Clovis, Vinton EPPSCO Salt Lake City, Feinberg Realty Company, and Dorsar Trucking.

He also serves as an officer and director of Texas Pipe Threaders, Tubular Services, Dorsar Industries, Border Steel Rolling Mills, Springer Building Materials, Inc., First State Bank, and Circle K Corporation.

Active as a civic leader, he is a member of the board of directors of the Child Treatment Center, the El Paso Rehabilitation Center, and El Paso Cancer Treatment Center.



THOMAS M. CARNES

Thomas M. Carnes, '52, has been actively engaged in alumni activities in the San Francisco Bay area.

A 1958 graduate of Michigan Law School, Mr. Barnes was associated with the San Francisco law firm of Pillsbury, Madison & Sutre before opening his own law firm in 1965 which specializes in civil trial law. As a partner in the firm of Carnes and Bailey, he concentrates in the field of professional and product liability, representing injured parties as well as insurance companies and manufacturers.

Mr. Carnes is a member of the Medical-Legal Interprofessional Committee of the San Francisco Bar Association and the San Francisco Medical Society.

He has been a member of the faculty of the Golden Gate School of Law in San Francisco, and he has lectured at the Hastings School of the Law at the University of California and the National Advocacy Institute.

Mr. Carnes has served as an arbitrator with the American Arbitration Association and is currently on the arbitration panel of the San Francisco Superior Court.

while she works toward a master's in library science at Catholic University and Fred pursues a career in art history.

1979 — Santa Fe

Another response to our welcoming letter was received from Gregory Cowell, a second-

generation St. Johnnie (father George was class of 1951). Greg this fall will be enrolled at Knox College for a year of basic sciences, as the first of four years as a student at Rush Medical School in Chicago.

In Memorium

- 1919 — Charles C. Nathan, Grantsville, Md., July, 1979.
- 1920 — The Rev. Reginald F. Hall, Alexandria, Va., June 24, 1979.
- 1923 — Capt. Robert E. Miller, Baltimore, Md., April 21, 1979.
- 1923 — Lt. Gen. Reginald H. Ridgely, Kilmarnock, Va., June 28, 1979.
- 1924 — Hon. William W. Travers, Salisbury, Md., May 27, 1979.
- 1934 — The Rev. Robert L. Jones, Annapolis, Md., July 16, 1979.
- 1946 — Alexander S. MacDonald, Jr., Tacoma, Wash., November 14, 1978.
- 1947 — The Ven. Samuel B. Bird, Jr., New York, N.Y., December 19, 1978.
- 1951 — Dr. Norman Garigliano, Bridley, Ca., November 1, 1978.
- 1952 — Walter L. Graham, San Francisco, Ca., May 18, 1979.
- 1977 — Susan B. Brill, Lakehurst, N.J., (Notified July, 1979).

Board — John D. Murchison, Dallas, Texas, June 14, 1979.

Three decades of accomplishments

(Continued from P.1)

Sparrow of the Annapolis campus said.

It is not every man who founds in effect is a new college.

"Mr. Weigle has a unique place in the heart of this college because of the heroic vision that led him to establish the second campus in Santa Fe," Dean Robert Bart said of Mr. Weigle's greatest achievement.

As important as founding St. John's second campus in 1964 have been his steps to stabilize and strengthen the college. The changes have been many since he was chosen by the board to become president on September 17, 1949, at the grand salary of \$7,500.

The operating budget has grown from \$377,000 to \$7-million for both campuses.

The endowment in 1949 stood at a quarter of a million dollars, yielding \$16,000 for general college support. In Annapolis it has reached \$8.5-million, one of the highest in the country on a per student basis, and in Santa Fe it stands at \$1.5-million.

FACULTY SALARIES have gone from a scale of \$3,000-\$5,000 to \$12,700-\$27,600, with the latter at \$32,000 if fringe benefits are included. (Although a struggle with the Faculty Salary Committee comes as an expected, annual tussle, Mr. Weigle has managed faculty raises almost every year since he arrived).

The debt he inherited of \$300,000 was wiped out. Both colleges ended in the black this fiscal year.

Enrollment has climbed from 196 that first year to 390 this fall in Annapolis and 275 in Santa Fe.

To create administrative stability, a college Polity — its constitution — was written in 1950, one year after Mr. Weigle arrived, establishing a system of tenure and a mandatory system of retirement for tutors.

Although an earlier Polity was suggested in 1943 and later drafted and promulgated by President Stringfellow Barr, the document adopted in 1950 was the first to have the approval and carry the authority of the Board of Visitors and Governors.

The college ceased its long exclusion of women; doors were open to women in 1951.

In 1953-54 accreditation was restored to the college, which had lost it in 1936.

St. John's policy of integration was reconfirmed, a condition of Mr. Weigle's coming here. (Integration was in effect during the preceding term of President John S. Kieffer; the college was the first previously all white college in Maryland to graduate a black student).

AND ST. JOHN'S passed from its "experimental," "revolutionary" stage to become an honored, nationally recognized part of the education establishment.

Above all, Mr. Weigle has been a great builder, the biggest in St. John's history. Besides the entire Santa Fe campus, he has been responsible for new buildings and renovations here.

When he arrived Koogle Hall, the white cottage with a big smokestack named for a former superintendent of buildings and grounds, was still standing behind McDowell, used in part to house students, with a big coal heap nearby.

Since then the college has constructed the heating plant, Campbell Hall, Key Auditorium, Mellon Hall, the Harrison Health Center, and the quad behind McDowell. It has renovated the library, Chase-Stone, and Humphries and completed much renovation in Pinkney, and it moved the Carroll Barrister House onto campus.

The college hopes to begin renovating and enlarging the dining hall and Paca-Carroll during the current academic year.

Today the plant value in Annapolis is estimated at over \$2 million. In Santa Fe it is putting \$5-million.

All this tireless, frequently thankless work in tending to the practical aspects of St. John's material well being is not to suggest that Mr. Weigle's devotion to St. John's is limited to just that. Mr. Weigle's belief in St. John's has been marked at times by a missionary fervor.

"**DICK WEIGLE** IS the real romantic," one faculty member said, in discussing what he feels to be a somewhat Don Quixotic quirk in Mr. Weigle's character.

It was Dick Weigle, after all, who conceived of the notion of not only a second campus, something he almost single handedly achieved, but a cluster of St. John'ses spread throughout the United States; and it was he who sought to come to the rescue of Illinois' Shimer College, feeling St. John's, because of the particular nature of Shimer, had an obligation to assist a sister college in distress.

Mr. Weigle still thinks that a third college would be desirable, but he is cautious. That would depend upon solving the present financial problem and completing the proposed building programs. Such a college would have to be "funded properly."

It is the "financial problem" which he feels is the major one facing St. John's: the need to meet constantly expanding annual budgets and to put the Santa Fe campus on a solid, less worrisome basis.

Can one president, rather than two, cope with this enormous job as well as overseeing the college generally in the face of what some economists think is the worst economic situation for the country in 50 years?

"I hope so," Mr. Weigle said. "It depends on who the new president is. Whether he can be dictated by what sort of person he is, how much respect he commands."

ALTHOUGH THE two campuses function as a single college,

Mr. Weigle noted that in effect it will be two separate colleges to which the incoming president will have responsibilities.

It will be no easy job and a big one for his successor, due to take office next July 1, the day Mr. Weigle begins the "sabbatical" the St. John's board has granted him. He and his wife, Mary, expect to travel, but their plans are not definite. After that they will divide the year between Santa Fe, where they own a home, and Annapolis, where they have begun house hunting.

Mr. Weigle has no precise plans as to how he will fill his retirement years, but because of his lengthy record of public service, he can almost certainly be expected to take a public role in the Annapolis area.

He was a member of the Anne Arundel County Board of Supervisors from 1951 to 1963 and served for five. He was the first chairman of the board of the Anne Arundel Community College and a founder and early president of Historic Annapolis as well as a former chairman of the Key School Board of Trustees.

He also was chairman of the Maryland Commission on the Capital City for a 10-year period ending in 1977 and a former vice-chairman of the Independent College Funds of America.

Professionally, he has served as chairman of the Curriculum Committee of St. Mary's College, St. Mary's, Md., and as a consultant to the National Endowment for the Humanities, the University of Montana, and Regis College in Denver. He has been a member of the board of directors, treasurer, vice-chairman, and then chairman of the Association of American Colleges.

AS CHAIRMAN of the association's Commission on Liberal Learning, he established the highly successful seminars, modeled after St. John's, for college presidents and deans at Pugwash, Nova Scotia.

Dapper with his trademark bowtie, Mr. Weigle moves with the quickness of a man in his 40's between coffee with students, faculty meetings, sessions with this board. He is pleased with his relationship with all three groups, happy with the fact that the quality of both faculty and students has grown and with the esprit de corps which exists among trustees.

What doesn't worry him is the college's ability to recruit students even though the number of high school graduates is shrinking and the college is fighting against a general climate of vocational and career education, a situation likely to grow worse if the economy continues downward.

"If we are successful in getting the word out, I'm fully confident we can find a pool of 500 students who are sufficiently interested," he said. "What we do is distinctive enough even with a declining number of prospective students."

Through the years Mr. Weigle has remained fast in his loyalty to St. John's.

"I would not have considered it a promotion to go from here to a larger institution," he said.

Einstein and SJC — tutor writes article

It is a hundred years since the birth of Albert Einstein and approximately a quarter of a century since his special theory of relativity — his first great triumph — was introduced into the St. John's laboratory.

This theory, in which Einstein exorcised inconsistencies plaguing 19th century physics and showed that energy means mass and vice versa, was first included in the late 1950's in a manual written by two tutors — Luke Harvey Poe and Curtis Wilson — and incorporated in the senior laboratory program.

Later, during the late '60's, it was shifted into the senior mathematics tutorial. At that time it was decided to read directly, rather than using a manual or textbook, the original 1905 paper, "On the Electrodynamics of Moving Bodies."

A NUMBER OF tutors helped to assemble notes to accompany the reading of the text: David Stephenson, Malcolm Wyatt, Robert Williamson, and Howard Fisher with Mr. Fisher subsequently editing the notes to obtain a clear and unified interpretation.

A special outcome of the work on Einstein at St. John's has been a scholarly article by Mr. Williamson, "Logical Economy in Einstein's 'On the Electrodynamics of Moving Bodies,'" published in *Studies in the History and Philosophy of Science* 8 (1977).

Mr. Williamson shows that criticisms directed at supposed logical flaws in Einstein's 1905 paper by Bridgman, Lindsay, Margenau, and others are due to a misreading.

A further result is that the Michelson-Morley experiment, much talked of in the past as a crucial experiment for relativity theory, but recently shown by Gerald Holton and others to have been no part of Einstein's thinking, is in fact logically irrelevant to the 1905 paper.

"There are very few places I would have considered if I had been asked. I feel very strongly the importance of the St. John's program."

"**I DON'T BELIEVE** we can be too evangelistic, but it is very important that St. John's be here, that it be as strong as possible so that people in other institutions can see what can be done in a college which takes liberal arts very seriously."

"I have always been impressed by Mr. Weigle's loyalty to the college and the concerns and needs of the faculty," former Dean Robert Neidorf of the Santa Fe faculty said.

Mr. Weigle reminds one that he is a teacher and that he understands the tremendous demands placed upon St. John's faculty members. "I share their vision of what we are trying to do," he said. Academically Mr.

IN BRIEF, what Mr. Williamson shows in a detailed argument is that Einstein starts from assumptions that the aether theorists of 1905 would have accepted: physical laws referred to different inertial systems take the same form, and there is a "stationery" spatial system of reference in which the velocity of light has the constant value c , whatever the velocity of the emitting body.

He then proceeds to show that these premises, apparently incompatible, are consistent, and that as a consequence the supposed "stationary system" is not unique and has no preferred status, and hence the aether is superfluous.

Einstein's argumentation involves a certain circularity which, as Mr. Williamson shows, is not vicious but serves to establish the consistency of the assumptions.

Retirement change due

Retirement of tenured tutors at St. John's College will continue to come at age 65 until July 1, 1982. After that normal retirement age will be 70.

New Federal regulations, in extending the number of working years before mandatory retirement, have made colleges and universities a temporary exception to the law. This is to allow a transition period for institutions to consider implications upon budgetary and instructional matters and plan accordingly.

The Board of Visitors and Governors adopted a resolution at its summer meeting bringing St. John's retirement policies into conformity with the new law. It now will permit all employees other than tenured tutors to continue working until age 70. Under present regulations, tenured tutors, after 65, may receive annual appointments.

Weigle generally has left the program to the care of the deans. Mr. Bart said the college owes him "deep gratitude for his unfailing respect for the program and its guardian, the Instruction Committee."

Before leaving, Mr. Weigle would have liked to have completed the building needs as he sees them: the library, auditorium, and physical education building in Santa Fe and the renovation of Randall and Paca-Carroll along with a new gym here.

What has been the best part of the job?

"The thing which has given me the greatest satisfaction is seeing a college well run, to know that when I am in Santa Fe all the people are here because of me, or to sit in a beautiful concert in Annapolis and to know that I've

DATE DUE

L

1940 classes to hold Homecoming reunion

Homecoming will be held September 28-29, coinciding this year with the fall meeting of the Board of Visitors and Governors.

Because of a shortage of hotel rooms in October, the board's meeting has been moved to September.

Alumni activities will get underway with a public lecture by the noted scholar and author, Jacques Barzun, at 8:15 p.m. Friday, Sept. 28, in the Key Auditorium. He will speak on "Tolstoy and History — A Look at the Theorizing in 'War and Peace.'"

Saturday's agenda will include the annual meeting with an

election of directors and other businesses, vocational counseling sessions with students, the annual student-alumni soccer classic, and homecoming dinner at the Bay Ridge Inn.

This year's homecoming will be marked by reunions of the classes of the 1940's, who will join in a seminar on Plato's "Meno" led by the Rev. J. Winfree Smith. The regular alumni seminar reading will be Pascal's "On Geometrical Demonstration," translated by the late St. John's tutor, Richard Scofield, and led by Samuel S. Kutler, '54, and Brother Robert Smith.

Team using every idea

(Continued from P. 1)

campus has dropped by 35,000 gallons during that period of time.

This summer alone the price has shot up by 50 per cent. Last winter Mr. Elzey said the college was paying 35 cents a gallon for number six oil. Currently it is pegged at 53.04.

"WHAT IT WILL do in October, when colder weather arrives, will be anybody's guess," Mr. Elzey said.

During the coming months the actual consumption of oil is expected to decrease, not just because of lowered thermostats, but because of the technical efforts of a new campus team consisting of Charles Wallace, superintendent of buildings and grounds, and James Bassford, chief engineer, both of whom are concluding their second year in their present jobs.

They have been attempting to put into effect every idea they can come up with, for cold weather and hot.

Because Mr. Wallace worked for 25 years with mechanical plumbing and heating systems before joining St. John's, he has been able to lend a special expertise to its immediate problems. He and Mr. Bassford have placed their emphasis upon making the present system run as efficiently as possible.

"We're thinking all the time," Mr. Wallace said. "Even if it's something which will just save five cents, we're going ahead with it."

Mr. Wallace said the college has cut the hot water temperature to 105 degrees from 160, although it may be necessary to move this figure upwards for sterilization purposes in the kitchen. (Eventually, when St.

John's gets a new kitchen, it will be possible to establish a separate heating control for its dishwashers).

To cut down further on energy for hot water, water-saver heads have been put on showers in all dormitories.

Relief valves, through which the college was losing hot water, were mended this summer, and a steam condensation pump not functioning up to its peak was rebuilt.

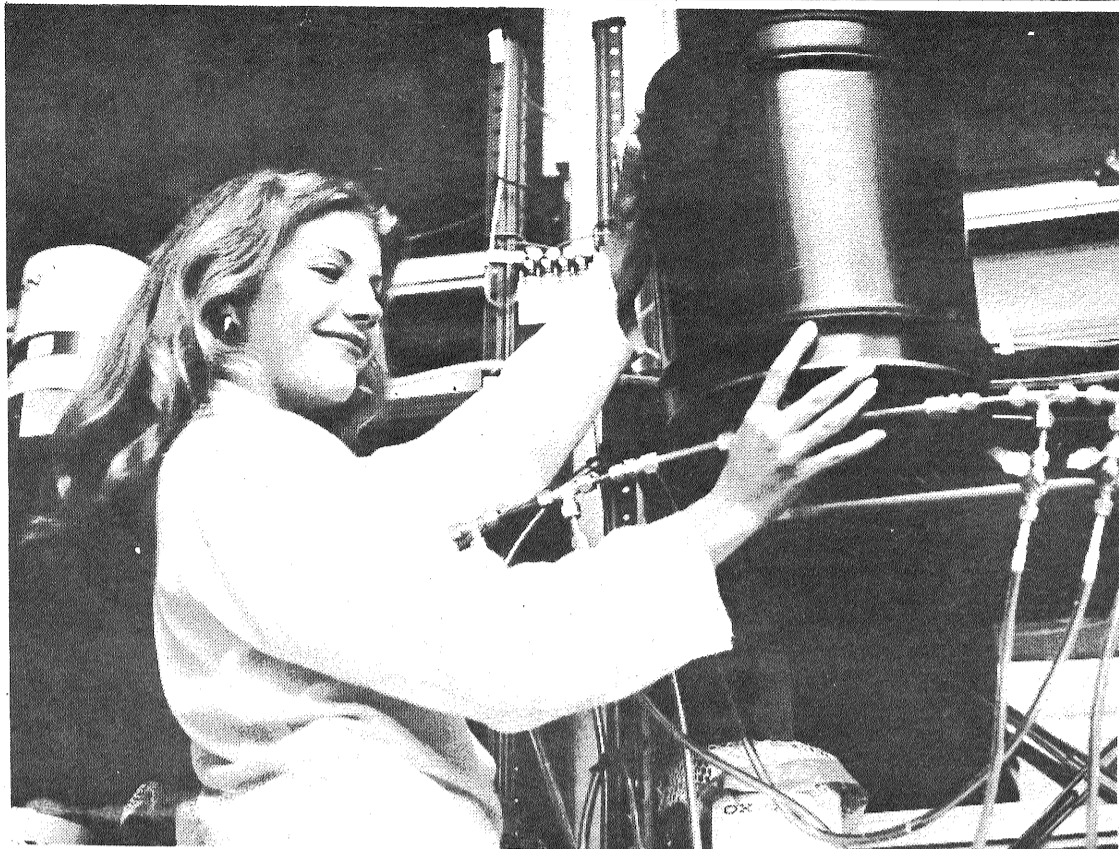
In an effort to save money on gas, which is not as cheap as oil, Mr. Wallace said the college will attempt to shut down the gas-fired, hot water, steam generator in the kitchen and supply the energy from the central unit in the heating plant.

MR. WALLACE said the college also is easing back on the amount of pressure used for steam boilers. Formerly 85 to 95 pounds of gauge pressure were used as against the present 60.

All the offices are being weather stripped, and Mr. Wallace is hoping to custom-make storm windows for the Carroll-Barrister House, where curtains are known to blow once fall winds penetrate cracks around the windows of this 18th century house.

To make certain the system is not subject to a breakdown when school opens, the college has replaced 150 feet of a three-inch, deteriorating condensate line behind the Key Auditorium.

From the standpoint of meager use of energy, the library will be the one place on campus to be treated more liberally. That is because more generous allotments of both cool and warm air are necessary to preserve books there.



Patricia Cook checks her laboratory equipment.

photo by L.W. Lewis

Student gets research grant

By L.W. LEWIS
St. John's Sophomore

Last year Patricia J. Cook, Baltimore sophomore, was in her third year as a chemistry major in very good standing at the University of Maryland. But in January she decided to pursue her interest in the traditional liberal arts and began again as a freshman here.

Recently Miss Cook discovered a way to combine her interest in laboratory science with her interest in the St. John's curriculum. For 10 weeks this summer, during the midst of her freshman studies, she found herself working a minimum of thirty hours a week on an independent biological research project.

This came as the result of a National Science Foundation stipend to pursue a project of a student's own choosing. In May the NSF announced that Miss Cook was welcome to pursue any of the three projects which she had proposed. This was despite the fact that the original intent was to award the stipend of \$1,125 to a student who had the summer months free from classes.

MISS COOK DECIDED on an in-depth research of hydroponics: the growing of plants in a nutrient solution which provides the exact

chemicals needed for the growth of the plants. The idea is to meet the exact nutritional needs of the plants so that the resulting plants are superior to the same plants grown in soil.

Miss Cook has been growing a species of wild violets, *Viola odorata*, because she wanted to work with a versatile plant so that she could readily examine the difference between those plants grown hydroponically and those grown in soil cultures.

"Violets are used in the manufacturing of perfumes and there must be a way to make hydroponics cost-effective on an industrial scale," Miss Cook said.

"They are edible, rich in vitamins A, D, and C, and therefore a possible food source. Violets are also a medicinal plant and have been used for years as a folk remedy for soothing skin lesions and infections. I am interested in the activity of the leaves of the wild violet against skin cancer cells."

Miss Cook was given one of the laboratory rooms at St. John's College and a suggested amount of \$225 to be spent on supplies. She has had to spend only \$125 and has designed her own system for growing violets.

Leanore Rinder dies of cancer

Leanore Rinder, college registrar since 1973, died August 30 of cancer.

Death came in her fifty-ninth year following a long struggle against the disease, which had spread to her bone. Although increasingly ill during the summer months, she had continued to spend some time at St. John's until a few days before her death.

Esteemed by the college community for her sweetness and graciousness as well as for the intelligence with which she performed her job, Mrs. Rinder is survived by her husband, Reginald, three daughters, two sons, and a mother.

Mrs. Rinder joined St. John's as a college secretary in 1969.

"Lea Rinder was much loved by all the persons, tutors, staff, and students with whom she worked so clearly and well," Dean Edward Sparrow said. "She was always cheerful, gentle, and considerate."

Goldwin heads 10-year study

Former Dean Robert A. Goldwin has been named director of a 10-year study of the United States Constitution looking toward the observation of the bicentennial of its writing.

The project is being sponsored by the American Enterprise Institute for Public Policy Research where Mr. Goldwin is a resident scholar.

"This project will encourage serious study of the Constitution so that by 1987 completed research books, courses, articles, programs, and speakers will be available to the public," William

J. Baroody, Jr., AEI president, said in announcing its start.

THE PROJECT will be financed by a Bicentennial Challenge Grant from the National Endowment for the Humanities and by funds to be raised by AEI.

Mr. Goldwin said it will bring together diverse viewpoints on the Constitution which will address such questions as how democratic is the constitution, what is the constitutional status, if any, of the two party system, is capitalism the only economic system possible under the con-

stitution, and how effective is the constitutional scheme for protecting individual rights.

"The topics to be studied will focus attention on the Constitution in its wholeness and cohesiveness," Mr. Goldwin said, "instead of on particular provisions or clauses as revealed in opinions of the Supreme Court. This non-legal approach will draw attention to massively significant provisions that have remained largely unexamined because they have not been a matter of legal disputes."