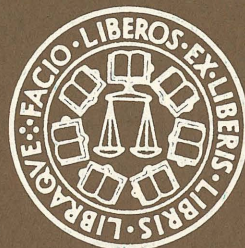


A UNIQUE OPPORTUNITY
FOR SUMMER GRADUATE STUDY





TO RECEIVE A MASTER'S DEGREE OR TRANSFER CREDITS
FROM ONE OF AMERICA'S PIONEERING COLLEGES A LIMITED
NUMBER OF TEACHERS AND OTHER COLLEGE GRADUATES
ARE OFFERED AN OPPORTUNITY TO ATTEND AN EIGHT-WEEK
SUMMER TEACHERS INSTITUTE IN LIBERAL EDUCATION
FROM JUNE 26 TO AUGUST 18, 1967 CONDUCTED BY THE
OUTSTANDING FACULTY OF ST. JOHN'S COLLEGE ANNAPOLIS
AND SANTA FE IN THE NEW MODERN FACILITIES OF
ST. JOHN'S COLLEGE, SANTA FE, NEW MEXICO



Address all inquiries:

ROBERT A. GOLDWIN, PH.D., *Director*
TEACHERS INSTITUTE IN LIBERAL EDUCATION
ST. JOHN'S COLLEGE
SANTA FE, NEW MEXICO 87501

IQ
NI
FO
IN
JA
U
NEW



THE INSTITUTE OFFERS

to members of the teaching profession — and others who are qualified — an opportunity to pursue a demanding and comprehensive course in the liberal arts, based on study of the greatest works of Western thought.

The curriculum for the summer of 1967 concentrates on Politics and Society.* In subsequent years similar programs will be offered in Literature and Poetry, Philosophy and Theology, and Mathematics and Natural Science. Students earn nine hours of graduate credit in eight weeks, approved for teacher certification purposes, and those who complete successfully all four summer programs will be awarded the degree of Master of Arts in liberal education.

In the ancient capital city of Santa Fe, with its wonderful “summer resort” climate, and the modern facilities of this striking new campus, students will have the perfect setting for serious study under the guidance of fine teachers and in the company of carefully selected fellow-students from all over the nation.

**The curriculum for 1967 is described in detail on Page Five of this Announcement.*

ST. JOHN'S COLLEGE

a non-sectarian institution founded in 1696 in Annapolis, Maryland, is the third oldest college in the United States. In the last three decades it has become renowned for its leadership in revitalizing the study of the liberal arts through a curriculum based on the Great Books, and for its exceptionally high academic standards. In 1964, a new campus of the College was established in Santa Fe, an integral part of the original College, offering the same curriculum; the two campuses are in every way one institution. In 1966, a grant was made to the College by the Carnegie Corporation of New York, providing major financial support to the Teachers Institute in Liberal Education in Santa Fe.

THE CARNEGIE CORPORATION

created in 1911 by Andrew Carnegie, provides financial assistance to institutions actively engaged in the advancement and the diffusion of knowledge. Grants are made to colleges and universities for studies of critical problems facing American education, for the development of new teaching programs, and for other projects of an experimental nature.



THE PROGRAM

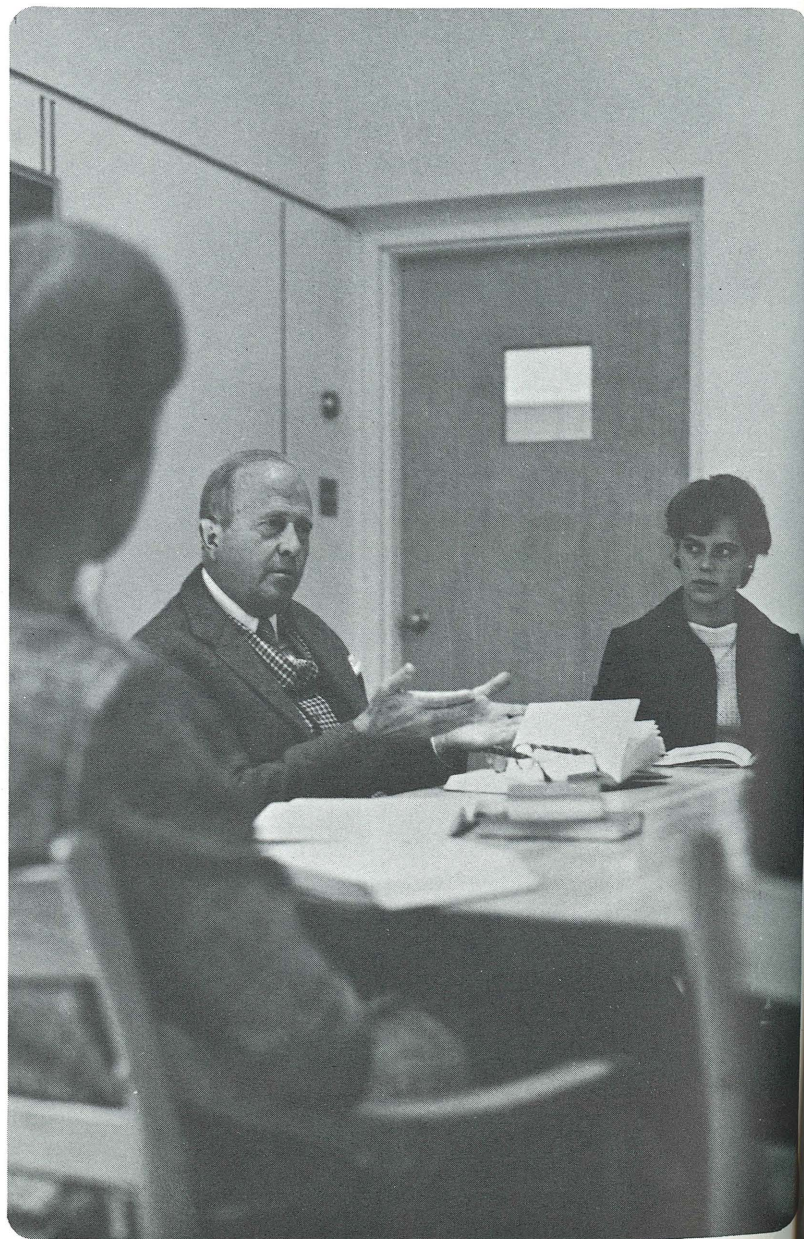
consists of three different kinds of classes designed to develop and strengthen in each student the skills of discussion, reading, and writing at the highest levels.

The Seminar is a discussion class, limited to about 25 students and led by two Tutors,* in which many of the greatest works of political, economic, and social thought are read and discussed. The books studied are the primary sources of much of Western thinking about men in politics and society down through the ages to the present. The Seminar combines skillful instruction and the greatest possible degree of freedom of thought and expression.

The Tutorial is a smaller class, of about twelve students, devoted to developing the skill of close reading and careful analysis of difficult texts.

The Preceptorial is devoted primarily to developing skill in writing. At the beginning of the summer, each student chooses a topic pertaining to the underlying principles of political and social life and, under faculty guidance, over a period of six weeks, writes a long essay. The last two weeks of the session are devoted to conferences with the Preceptorial Tutor and to the rewriting of the essay in final form.

**There are no academic ranks in the St. John's Faculty.
All members of the Faculty have the title of Tutor.*



POLITICS AND SOCIETY

SEMINAR

meets for two hours, two evenings a week, Monday and Thursday, from 8 p.m. to 10 p.m.

WKS. SEM.

- | | |
|---|--|
| 1 | 1. Freud, <i>Civilization and Its Discontents</i> |
| | 2. Marx, <i>Economic and Philosophic Manuscripts</i> |
| 2 | 3. Mill, <i>On Liberty</i> |
| | 4. Nietzsche, <i>Genealogy of Morals</i> |
| 3 | 5. Plato, <i>The Republic</i> , Books I and II |
| | 6. <i>The Republic</i> , Books III and IV |
| 4 | 7. <i>The Republic</i> , Books V, VI, and VII |
| | 8. <i>The Republic</i> , Books VIII, IX, and X |
| 5 | 9. Machiavelli, <i>The Prince</i> |
| | 10. Locke, <i>Of Civil Government</i> , Chapters I — X |
| 6 | 11. <i>Of Civil Government</i> , Chapters XI — XIX |
| | 12. Rousseau, <i>On the Origin of Inequality</i> , I |
| 7 | 13. <i>On the Origin of Inequality</i> , II |
| | 14. Declaration of Independence and related speeches by Abraham Lincoln |
| 8 | 15. Madison, Hamilton, and Jay, <i>The Federalist</i> , Numbers 1, 9, 10, 39, 51, 57, and 71 |
| | 16. Shakespeare, <i>Coriolanus</i> |

TUTORIAL

meets for one hour, four mornings a week. Precise schedules will be set at the time of registration.

Aristotle, *Politics*, Book I (1 week, 4 classes)

Aristotle, *Politics*, Book III (1 week, 4 classes)

St. Thomas Aquinas, *Questions on Law*, (2 weeks, 8 classes)

Hobbes, *Elements of Law* (2 weeks, 8 classes)

Kant, *Perpetual Peace* (1½ weeks, 6 classes)

Kant, *Idea of a Universal History with Cosmopolitan Intent* (½ week, 2 classes)

The Curriculum, Summer, 1967

PRECEPTORIAL

meets as a group at least once a week, but the main work of the Preceptorial is done by students individually, as they progress with their research and writing, and in private meetings between individual students and the Tutor. The Preceptorial may meet as a group more often by agreement among the students and the Tutor.

SPECIAL COURSES

of four weeks' duration, related to the subject of Politics and Society, but not a part of the full eight-week Master's program, will be offered, but not to students in the Master's program. Students can register for two hours of graduate credit (approved for teacher certification purposes by the New Mexico State Board of Education) per four-week course, or on a non-credit basis. Tuition is \$75 per course (students may enroll for two courses at a time), with all other charges prorated. Further information about these Special Courses will be available from the Director after February 15, 1967.

Schedule of Offerings in Subsequent Years (students may enroll in one sequence each summer):

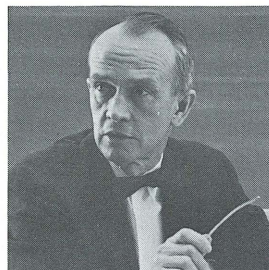
1967: Politics and Society

1968: Literature and Poetry
Philosophy and Theology

1969 (and all subsequent summers):
Politics and Society
Literature and Poetry
Philosophy and Theology
Mathematics and Natural Science

THE FACULTY

for the Teachers Institute will be composed of members of the St. John's Faculty (Annapolis and Santa Fe) and Visiting Tutors from the faculties of other colleges and universities. Several of the Visiting Tutors are St. John's graduates who specialized in their graduate studies in the social sciences and who are now professors at other colleges and universities. The Faculty of St. John's College has been described as "superior" by Cass and Birnbaum in the *Comparative Guide to American Colleges*, an authoritative guide to institutions of higher learning in the United States.



RICHARD D. WEIGLE, *President*
ST. JOHN'S COLLEGE

received B.A., M.A., and Ph.D. degrees from Yale University. Mr. Weigle taught at Yale-in-China and at Carleton College before serving in World War II in the Far East and then in the Far Eastern Office of the Department of State. He came to St. John's in 1949 as President, and founded the Santa Fe campus in 1964. For twelve years he served on the Board of Education of Anne Arundel County, Maryland, for five years as President. He is a past President of the Maryland Association of Boards of Education and is currently the Chairman of the Association of American Colleges.



ROBERT A. GOLDWIN, *Director*
TEACHERS INSTITUTE IN
LIBERAL EDUCATION

is a graduate of St. John's College who received M.A. and Ph.D. degrees in political science from The University of Chicago and taught in that institution for many years. He is now Associate Professor of Political Science and Director, Public Affairs Conference Center, Kenyon College. He is an author and the editor of more than a dozen books on American politics and international relations. In 1966 he was awarded a Guggenheim Foundation Fellowship for study of John Locke's political philosophy.

ADMISSIONS, FEES, AND OTHER INFORMATION

DEGREE REQUIREMENTS

Students seeking to earn the Master of Arts from St. John's College must complete the four-summer sequence of study (or three summers at St. John's if they have nine hours of graduate credit from another institution). Students need not commit themselves to more than one summer of study at a time, nor need they attend in consecutive summers. The four subjects may be taken in any order.

FEES

Tuition	\$300
Room	120
Board	145
Student Activity	30
Total	\$595

Students living in the dormitories will pay full board for meals in the dining hall. Off-campus students will purchase meal tickets for five lunches and two dinners (seminar evenings) weekly in the dining hall.

Board for off-campus students.....\$60

STUDENT LOANS

Resident New Mexico students are eligible for loans through the Student Loan Guarantee Program, and may apply through the Institute Director. Residents of other states may also obtain information from the Director.

ELIGIBILITY

Applicants must have a Bachelor's degree from an accredited institution, or the equivalent in study and experience. Although the curriculum is designed primarily for teachers, applications are invited from others. All decisions on applications will be made by the Admissions Committee of the Faculty.

CREDITS

Nine hours of transferable graduate credit, approved for teacher certification purposes by the New Mexico State Board of Education, are

awarded for successful completion of each eight-week summer session. Students who are planning to receive the Master's degree from another institution are advised to consult that institution before enrolling at St. John's. The four-summer Institute will provide a total of 36 graduate credit hours.

TIME-TABLE FOR APPLICATIONS

Applications should be submitted by March 17, 1967, to insure full consideration. It is advantageous to apply as early as possible because *applicants will be accepted on a first-come first-served basis*. Applicants will be notified of a decision within three weeks. Enrollment is limited to 120 students in 1967. Late applicants can be admitted only in case of withdrawals.

FACILITIES

St. John's College is located on a 260-acre site on the western slopes of the Sangre de Cristo Mountains within the City of Santa Fe, and is a 15-minute drive from the downtown plaza. Completed in 1964, the College offers beautiful, modern facilities, all of which will be open to Institute students.

ROOM AND BOARD

Students will be expected to live in the dormitories on campus, but permission to live off-campus will be granted for good reason. The dormitory rooms are spacious and unusually attractive; many have balconies looking out on the nearby scenic mountain ranges. Dormitory suites are available for married couples without children. The College will assist students in finding off-campus housing, but does not guarantee such housing if unavailable. All dormitory students will be provided 21 meals a week in the student dining hall. Off-

campus students are required to purchase meal tickets for five lunches and two dinners (seminar evenings) in the dining hall each week.

STUDENT ACTIVITY

Santa Fe offers rewarding cultural activities throughout the summer and splendid scenic sights within short driving distances. The Student Activity fee, required of all students, includes a full-season ticket to the Santa Fe Opera, field trips to nearby Indian Pueblo ceremonies, the services of the College physician and nurse, use of the campus tennis courts, and unlimited use of scheduled College bus service from the campus to the center of Santa Fe.

WORK TIME - FREE TIME

The Institute's program is demanding and requires considerable outside preparation in addition to classroom attendance, but there will be ample time for students to enjoy the special attractions of Santa Fe and its environs. Quaint craft shops, art galleries, and museums are situated within a short drive of St. John's. Tours of the area might include a visit to Taos Pueblo; a trip to the ghost mining town of Cerrillos; and outings in the Pecos Wilderness and Hyde Park, unmatched for scenic grandeur. The St. John's campus is ideally situated for hikers, particularly those interested in exploration of flora and fauna indigenous to the Southwest.

THE CLIMATE

At an altitude of 7,300 feet, the student should be prepared for warm days and cool evenings. The climate is unexcelled for summer comfort in the United States. The temperature rarely reaches 90° in mid-day, and never fails to fall below 60° in the evening. Sweaters and casual clothing are recommended.



Address all inquiries

THE DIRECTOR
TEACHERS INSTITUTE IN LIBERAL EDUCATION
ST. JOHN'S COLLEGE
SANTA FE, NEW MEXICO 87501

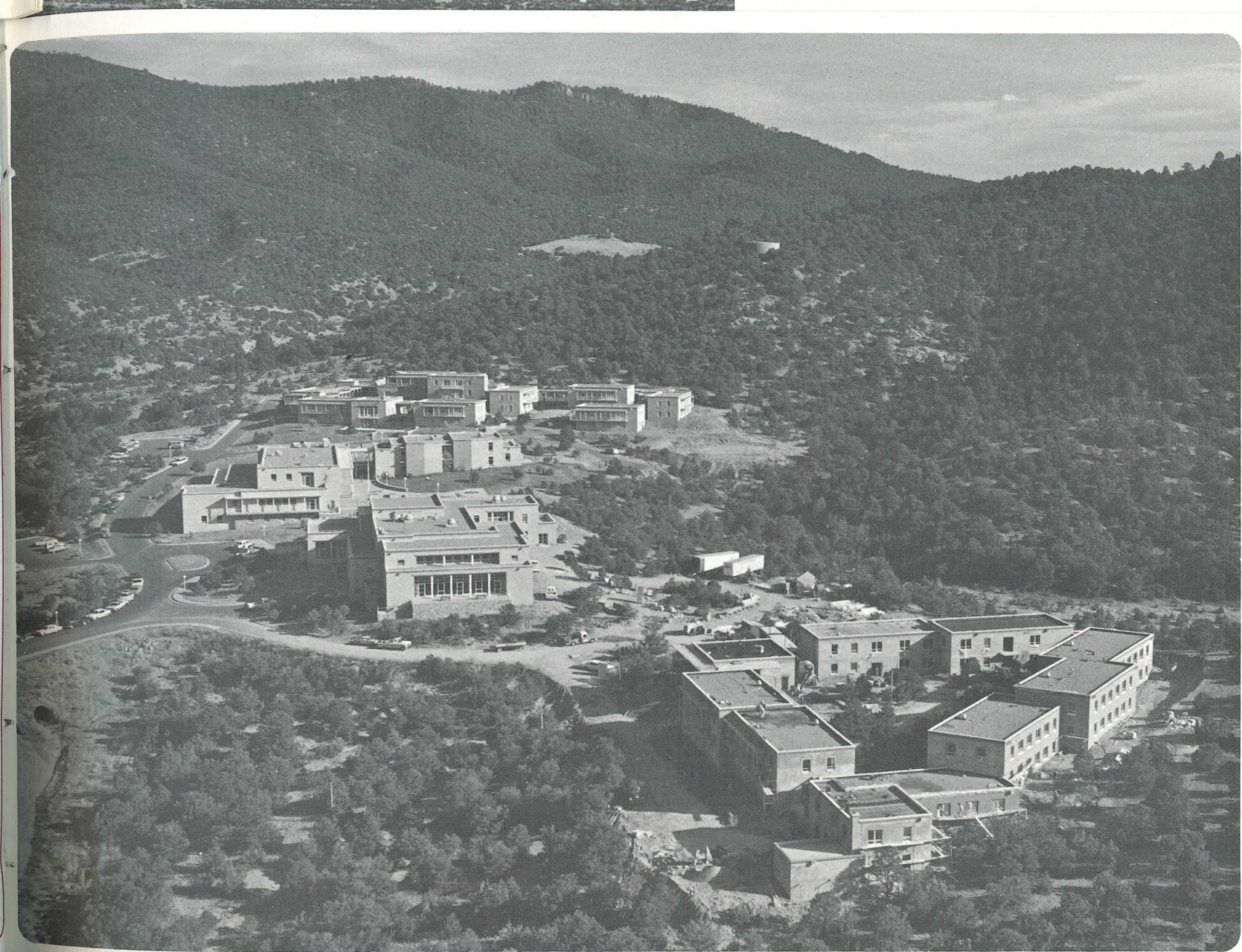
RECREATIONAL AND CULTURAL

Santa Fe, founded by mission padres more than three and one-half centuries ago amid ancient Indian Pueblos, has served as fortress, showplace, and administrative headquarters for four sovereign governments. Its ancient plaza, established in 1610, served initially as focal point for trade with Old Mexico. Later it became the center of commerce between the colonies and the entire Western frontier.

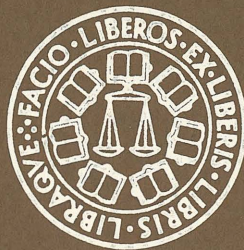
Benignly christened the City of Holy Faith by its founding padres, and famed a century ago as the end of the Santa Fe Trail, it is known today as the "City Different."

Most of its narrow, winding streets still radiate from the main plaza, and along these lie literally dozens of ancient landmarks, historical sites, and religious shrines. Nearly all are carefully preserved and are open to visitors throughout the summer months.

Santa Fe is dotted with book stores, shops, art galleries, and studios. The fifty-mile radius surrounding Santa Fe has been described as the most interesting area in the United States. In addition to outdoor recreational facilities and superb mountain scenery, visitors have the opportunity to explore ancient ruins, ghost towns, deserted gold mines, and vast stretches of untamed nature.



ST. JOHN'S COLLEGE



IN SANTA FE