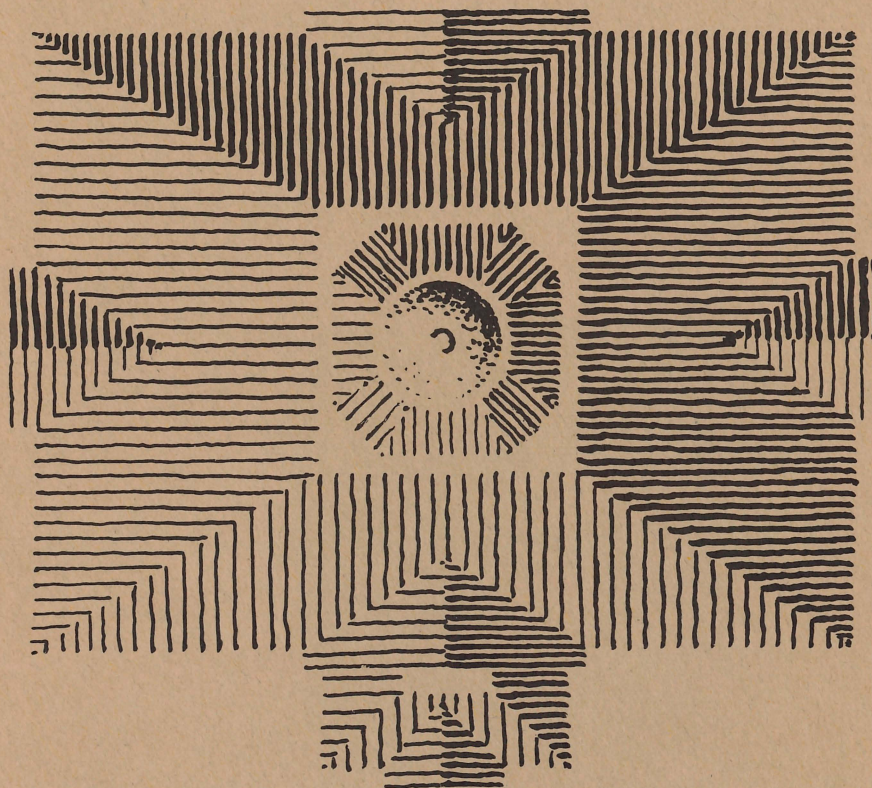


## BULLETIN OF ST. JOHN'S COLLEGE, ANNAPOLIS, MARYLAND









# **CAMPUS PLAN REPORT**

*Prepared for ST. JOHN'S COLLEGE, ANNAPOLIS, MARYLAND  
by I. M. PEI & ASSOCIATES, ARCHITECTS and PLANNERS*

*September 1962*

St. John's College, Annapolis, Maryland Volume XIV September 1962 Number 3 Published Quarterly

Entered as Second Class Matter February 18, 1949 at the Post Office at Annapolis, Maryland, under the Act of August 24, 1912.



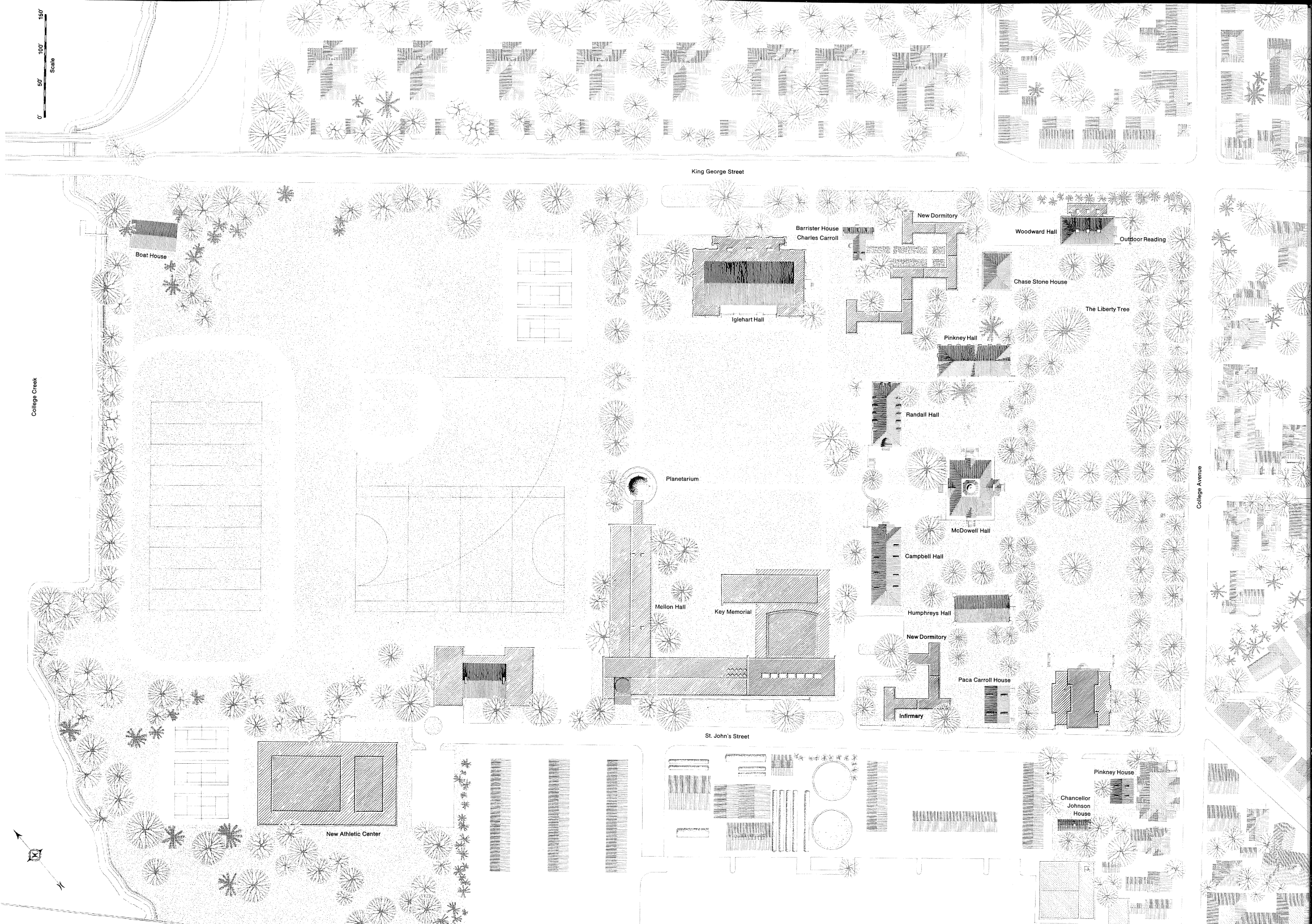
## FOREWORD

*The St. John's College campus is composed of buildings ranging in age from four to almost two hundred years. Many of the older buildings are now in need of repair. Several are inefficiently used in terms of the present curriculum and enrollment. Moreover, certain pressing needs cannot be met in any of the existing buildings and hence require construction of new facilities.*

*In considering possible modifications and additions to the physical plant of the College, our approach has been essentially conservative. We have sought to preserve and to strengthen the presently-established character of the campus, which seems, in scale and organization, altogether harmonious with the curriculum. Thus, while we suggest extensive interior remodelling to some of the existing buildings, no demolition is proposed. Where new wings or new buildings are recommended, they have been sited so as to complement and enhance the traditional quadrangular grouping, with its focus in McDowell Hall.*

*Upon completion of the work outlined in this report, the College could accommodate an enrollment of about 350 students. As shown on the accompanying Campus Plan, this can be accomplished without the acquisition of new land. Further growth beyond this number would we believe, require expansion of the campus into the area west of St. John's Street.*

CAMPUS PLAN





## USE OF BUILDING FOR ST. JOHN'S COLLEGE

3

BUILDING	Present Use	Proposed Use
<i>McDowell Hall</i>	<i>Administration</i> <i>Class rooms</i> <i>Student center</i> <i>Coffee shop</i>	<i>Administration</i> <i>Class rooms</i> <i>Move Administration</i> <i>into basement</i>
<i>Key Memorial</i>	<i>Lecture</i>	<i>Same</i>
<i>Mellon Hall</i>	<i>Class rooms</i> <i>Laboratory</i>	<i>Same</i>
<i>Planetarium</i>	<i>Planetarium</i>	<i>Same</i>
<i>Woodward Hall</i>	<i>Library</i> <i>50,000 volumes</i>	<i>Library</i> <i>100,000 volumes</i> <i>add wing</i>
<i>Iglehart Hall</i>	<i>Gymnasium</i>	<i>Dining hall</i> <i>Add kitchen wing</i>
<i>The Paca-Carroll House</i>	<i>Dormitory men</i> <i>8 doubles, 2 triples</i>	<i>Dormitory women</i> <i>10 doubles</i>
<i>Humphreys Hall</i>	<i>Dormitory men</i> <i>4 singles, 20 doubles</i> <i>Book store</i>	<i>Dormitory women</i> <i>16 singles, 14 doubles</i> <i>Book store</i>
<i>Pinkney Hall</i>	<i>Dormitory men</i> <i>60 singles on 3 floors</i> <i>Administration</i>	<i>Dormitory men</i> <i>60 singles on 4 floors</i>
<i>Chase-Stone House</i>	<i>Dormitory men</i> <i>5 singles, 12 doubles</i> <i>Student laundry</i>	<i>Dormitory men</i> <i>12 singles, 6 doubles</i> <i>Remove wings</i>
<i>Randall Hall</i>	<i>Dormitory women</i> <i>20 doubles</i> <i>Dining hall</i>	<i>Dormitory men</i> <i>20 doubles</i> <i>Student center</i> <i>Coffee shop</i>
<i>Campbell Hall</i>	<i>Dormitory women</i> <i>19 singles, 27 doubles</i> <i>Social hall</i>	<i>Dormitory women</i> <i>19 singles, 27 doubles</i> <i>Social hall</i>

<i>The Charles Carroll Barrister House</i>	<i>Alumni hall Faculty offices</i>	<i>Same</i>
<i>Heating Plant</i>	<i>Heating</i>	<i>Same Adequate for future plans</i>
<i>Boathouse</i>	<i>Boats</i>	<i>Same</i>
<i>The Pinkney House</i>	<i>Infirmary</i>	<i>Faculty residence</i>
<i>9 St. John's St.</i>	<i>Dormitory men</i>	<i>Demolish</i>
<i>The Chancellor Johnson House</i>	<i>Dormitory men</i>	<i>Move—faculty residence</i>
<i>New Dormitory I</i>	—	<i>Dormitory men 72 singles, 12 living rooms</i>
<i>New Dormitory II</i>	—	<i>Dormitory women 24 singles, 4 living rooms</i>
<i>New Infirmary</i>	—	<i>2 wards, 2 singles Nurses' residence</i>
<i>New Athletic Center</i>	—	<i>Gymnasium Pool Squash Badminton</i>



## DORMITORY DISTRIBUTION

5

<i>BUILDING</i>	<i>Present</i>		<i>Proposed</i>	
	<i>Men</i>	<i>Women</i>	<i>Men</i>	<i>Women</i>
<i>The Paca-Carroll House . . .</i>	21	—	—	20
<i>Humphreys Hall . . . . .</i>	44	—	—	44
<i>Campbell Hall . . . . .</i>	—	73	—	73
<i>Randall Hall . . . . .</i>	—	40	40	—
<i>Pinkney Hall . . . . .</i>	60	—	60	—
<i>Chase-Stone House . . .</i>	29	—	24	—
<i>9 St. John's Street . . . .</i>	17	—	—	—
<i>The Pinkney House . . . .</i>	2	—	—	—
<i>The Chancellor Johnson House</i>	5	—	—	—
<i>New Dormitory I . . . . .</i>	—	—	72	—
<i>New Dormitory II . . . . .</i>	—	—	—	24
<hr/>				
<i>Total</i>	178	113	196	161
	113		161	
<i>Grand Total</i>	291		357	

# PRIORITY SCHEDULE OF IMPROVEMENT AND NEW CONSTRUCTION

6

BUILDING	Estimated Cost
1. Building new dormitory I . . . . .	\$ 300,000
2. Infirmary . . . . .	180,000
3. Remodel Woodward Hall, add wing . . . . .	150,000
4. Build new Athletic Center . . . . .	600,000
5. Remodel Iglehart Hall as dining hall . . . . .	100,000
6. Remodel Chase Stone Hall . . . . .	50,000
7. Remodel Randall Hall, lower two floors as Student Center	50,000
8. Remodel McDowell for administration and renovate heating system . . . . .	100,000
9. Modify Pinkney and Humphrey Halls and Paca-Carroll House . . . . .	50,000
10. Modify Mellon Hall . . . . .	25,000
11. Site Work and Athletic Fields . . . . .	250,000
12. Demolish No. 5 St. John's Street . . . . .	5,000
13. Move Chancellor Johnson House and renovate Pinkney House . . . . .	35,000
14. Build New Dormitory II . . . . .	100,000
	<hr/>
	\$1,995,000



McDowell Hall



## REVIEW OF INDIVIDUAL BUILDINGS    McDOWELL HALL

8

<i>Built:</i>	<i>1774</i>
<i>Condition:</i>	<i>Good</i>
<i>Present Use:</i>	<i>Administration and classrooms, student center and coffee shop</i>
<i>Proposed Use:</i>	<i>Centralize administration on ground and first floors. Keep present classrooms on second and third floors.</i>
<i>Recommendations:</i>	<i>Move coffee shop into Randall Hall. Install access stair between ground and first floors. Adjust ground floor partitions for offices and renovate heating system. Floodlight tower.</i>
<i>Estimated Cost:</i>	<i>\$100,000</i>



## KEY MEMORIAL, MELLON HALL, PLANETARIUM

9

<i>Built:</i>	1958
<i>Condition:</i>	Excellent
<i>Present Use:</i>	Lecture, classrooms, laboratories, planetarium
<i>Proposed Use:</i>	No change
<i>Recommendations:</i>	Correct noise in ventilation system; install folding partitions for better use of classrooms.
<i>Estimated Cost:</i>	\$25,000

Woodward Hall



## WOODWARD HALL

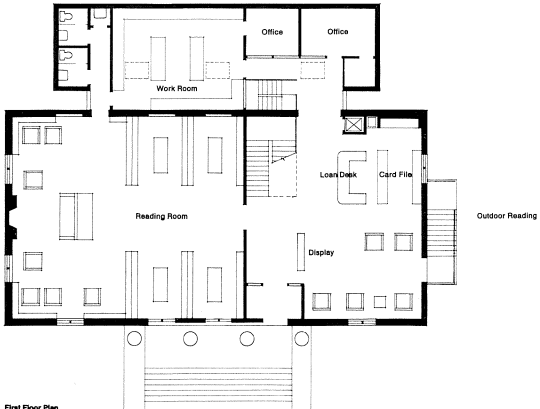
11

<i>Built:</i>	1904
<i>Condition:</i>	Fair
<i>Present Use:</i>	Library
<i>Proposed Use:</i>	Same—Although the library is not centrally located, because of the size of the college and outside use of these facilities it seems best to enlarge this building.
<i>Recommendations:</i>	<p>Remodel (A) and extend facilities (B &amp; C)</p> <p><b>A</b></p> <ol style="list-style-type: none"><li>1. Rebuild stairs and fireproof.</li><li>2. Remove toilets on second floor and make into smoking room.</li><li>3. Strengthen floors and level ceiling.</li><li>4. Rebuild wall stacks and limit height; total volumes—basement—35,000; 1st and 2nd floor—30,000.</li><li>5. Redesign study alcoves.</li><li>6. Waterproof and insulate basement.</li><li>7. Renovate heating and electric systems and add air conditioning.</li><li>8. Add book elevator.</li></ol> <p><b>B</b></p> <ol style="list-style-type: none"><li>1. Stacks—35,000 volumes</li><li>2. Work level consisting of<ol style="list-style-type: none"><li>a. offices</li><li>b. toilets and lavatories</li><li>c. work counter with sink</li></ol></li><li>3. Access stairs</li><li>4. Fireproof doors with fuseable links.</li></ol> <p><b>C</b></p> <ol style="list-style-type: none"><li>1. Develop outside reading area</li></ol>
<i>Estimated Cost:</i>	\$150,000

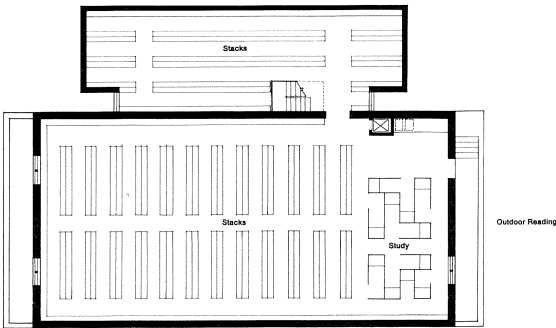




Second Floor Plan



First Floor Plan



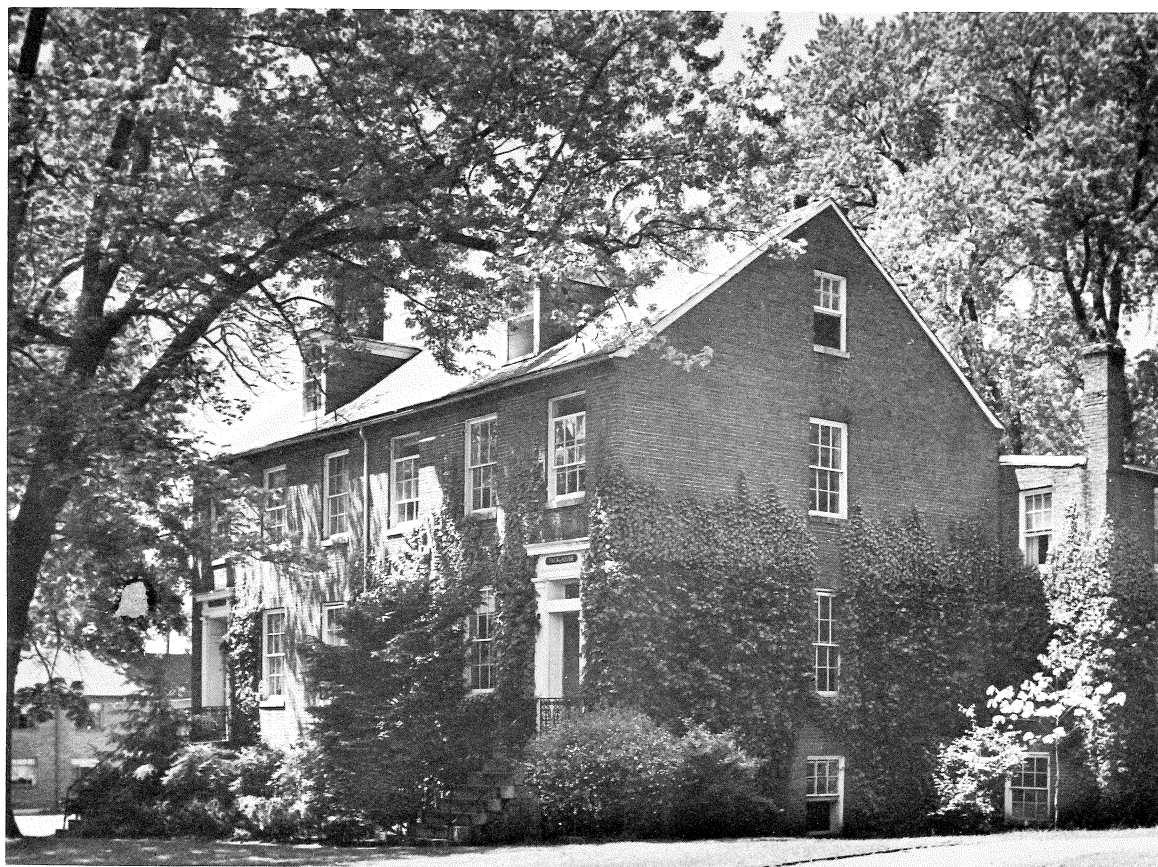
Basement WOODWARD HALL

Scale 0' 5' 10' 20'

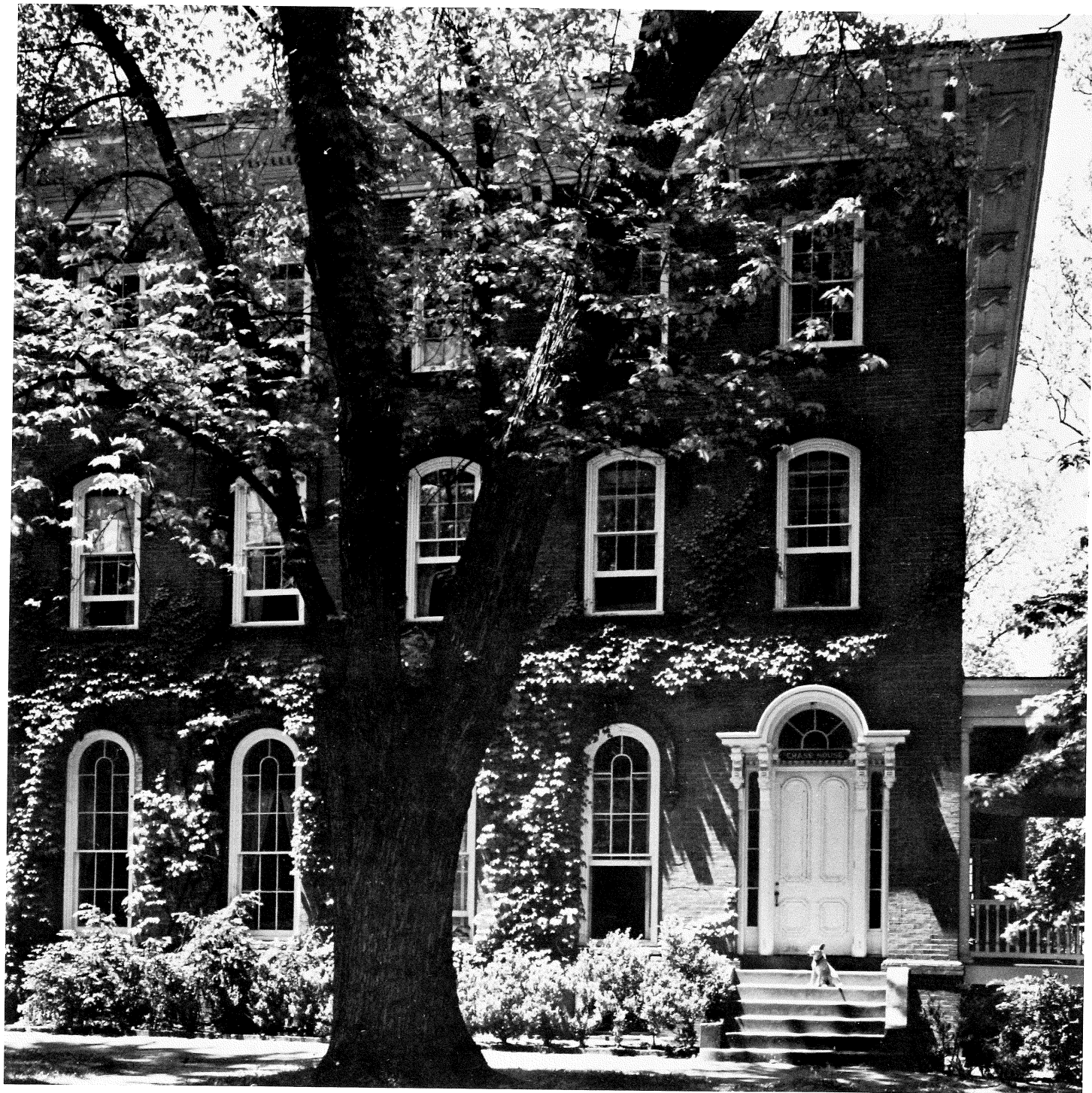
## THE PACA CARROLL HOUSE

13

<i>Built:</i>	1857
<i>Condition:</i>	Fair
<i>Present Use:</i>	Dormitory, men
<i>Proposed Use:</i>	Dormitory, women
<i>Recommendations:</i>	Remodel building by renovating heating and electrical system.
<i>Estimated Cost:</i>	\$20,000



Chase-Stone House





## CHASE-STONE HOUSE

15

*Built:* 1857

*Condition:* Fair

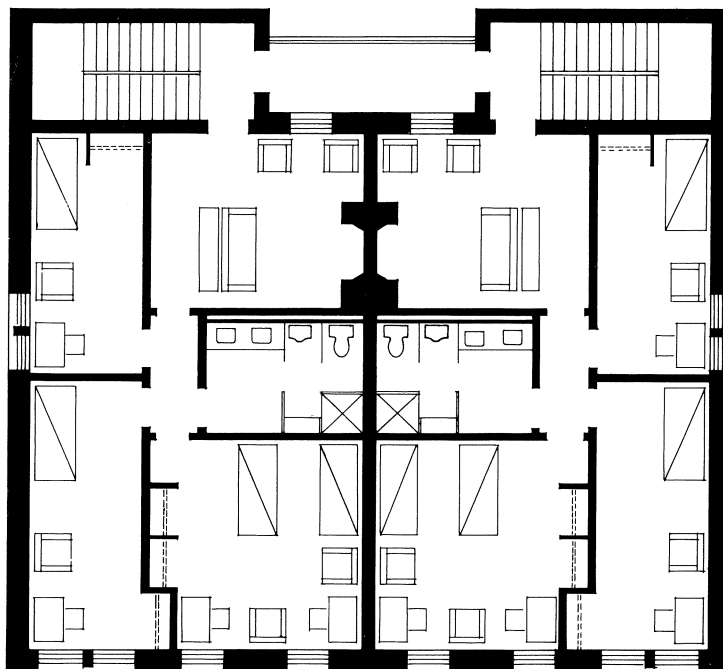
*Present Use:* Dormitory, men

*Proposed Use:* Dormitory. This building has sufficient architectural features to justify the cost of repairs.

*Remarks:* Condition of brick—a report has been submitted for repair and maintenance of brick and ivy.

*Recommendations:* Remove wings in rear. Remodel building with 12 single and 6 double rooms grouped into 6 suites. Repair exterior brick and silicone walls.

*Estimated Cost:* \$50,000



Typical Floor Plan CHASE-STONE HOUSE

Scale 0' 5' 10'

# IGLEHART HALL

16

*Built:* 1910

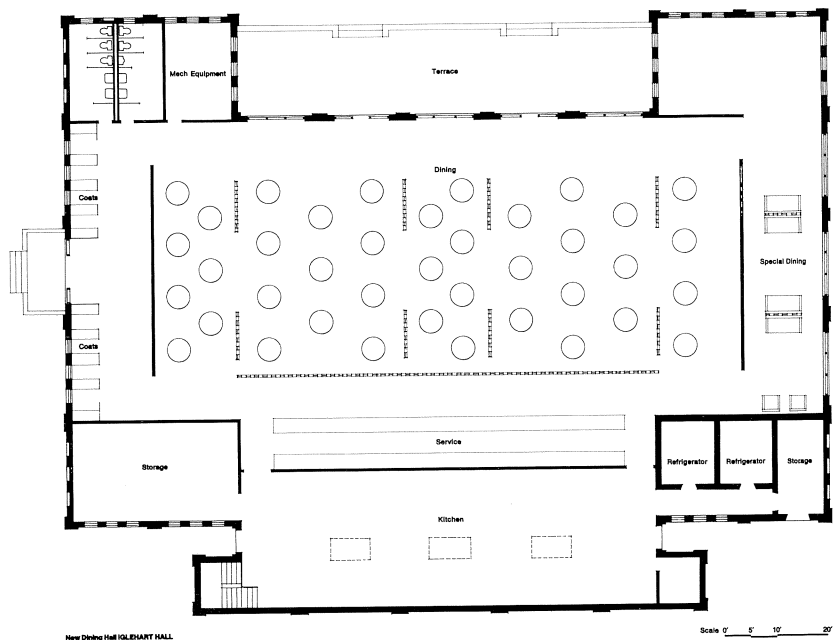
*Condition:* Fair

*Present Use:* Gymnasium

*Proposed Use:* Dining Hall—Totally inadequate for gym and not large enough to renovate.

*Recommendations:* Build kitchen wing using existing equipment. Adjust wall partitions. Refinish floor. Renovate heating and electric system. Install special screen partitions. Repair brick and roof.

*Estimated Cost:* \$150,000



New Dining Hall IGLEHART HALL

Scale 0' 5' 10' 20'

## HUMPHREY HALL , PINKNEY HALL , PINKNEY HOUSE

17

*Built:* 1835 (Remodeled 1959)  
*Condition:* Excellent  
*Present Use:* Dormitory and book store  
*Proposed Use:* Dormitory, women  
*Recommendations:* Enlarge book store in basement. Convert 2 doubles into 4 singles.  
*Estimated Cost:* \$10,000

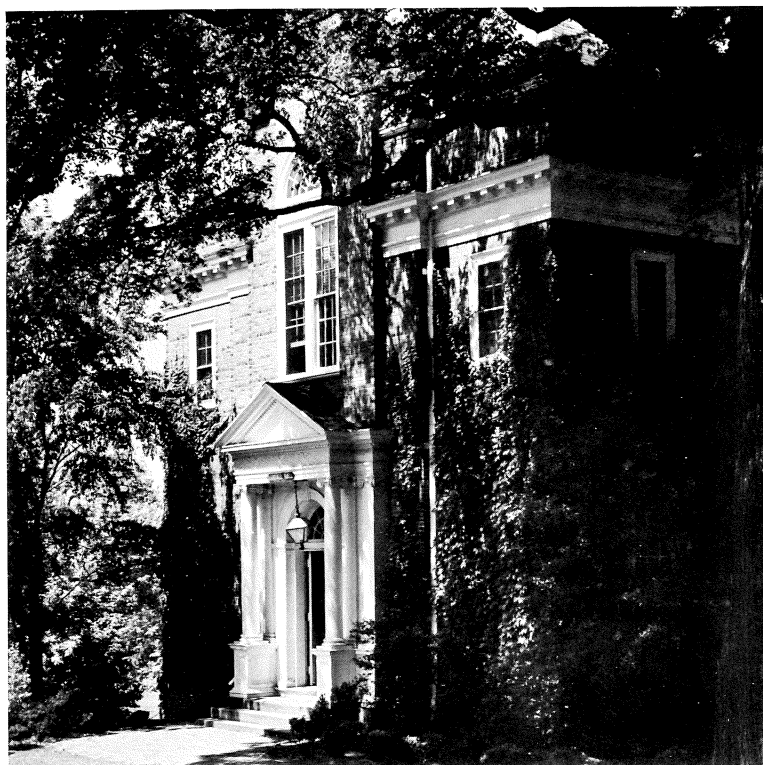
*Built:* 1857  
*Condition:* Fair  
*Present Use:* Dormitory and administration  
*Proposed Use:* Dormitory, men  
*Recommendations:* Move administration into ground floor of McDowell. Convert 2 singles on each wing of 2nd, 3rd, and 4th floors into a common living room for 8 singles. Remodel 1st floor into 2 suites; 6 singles and 1 tutor's apartment. Sound-proof corridors.  
*Estimated Cost:* \$20,000

*Built:* c. 1780  
*Condition:* Fair  
*Present Use:* Infirmary and nurse's residence.  
*Proposed Use:* Faculty housing.  
*Recommendations:* Remove infirmary and frame wings in rear. Renovate interior—heating and electrical.  
*Estimated Cost:* \$20,000

## RANDALL HALL

18

<i>Built:</i>	1904
<i>Condition:</i>	Good
<i>Present Use:</i>	Dining hall and dormitory, women
<i>Proposed Use:</i>	Student center and dormitory, men
<i>Recommendations:</i>	Move dining hall and kitchen to Iglehart. Remodel lower two floors into student center with coffee shop, browsing rooms and social rooms; add connecting stair. Replace exterior with interior fire stair. Improve common living rooms on 2 dormitory floors.
<i>Estimated Cost:</i>	\$50,000





## NEW DORMITORY 1 MEN

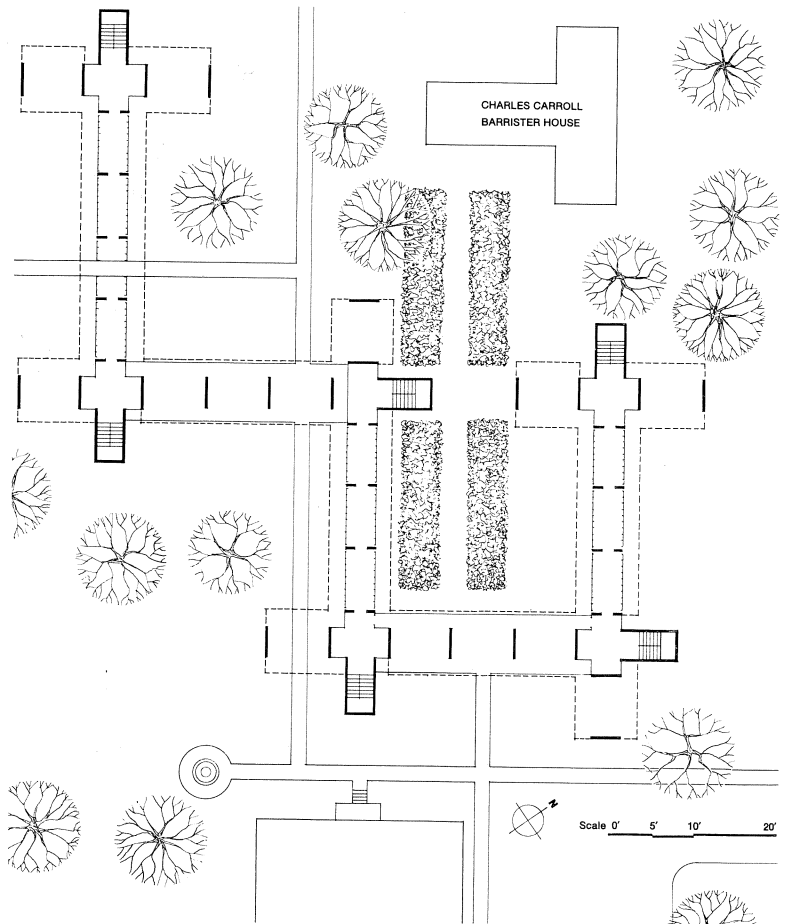
19

### *Recommendations:*

1. Build 6 typical house units connected together.
2. Each house unit to consist of two living floors above open ground floor and each house floor to have six single rooms with a common living room and bath.
3. Design to follow individual scale and program of college.

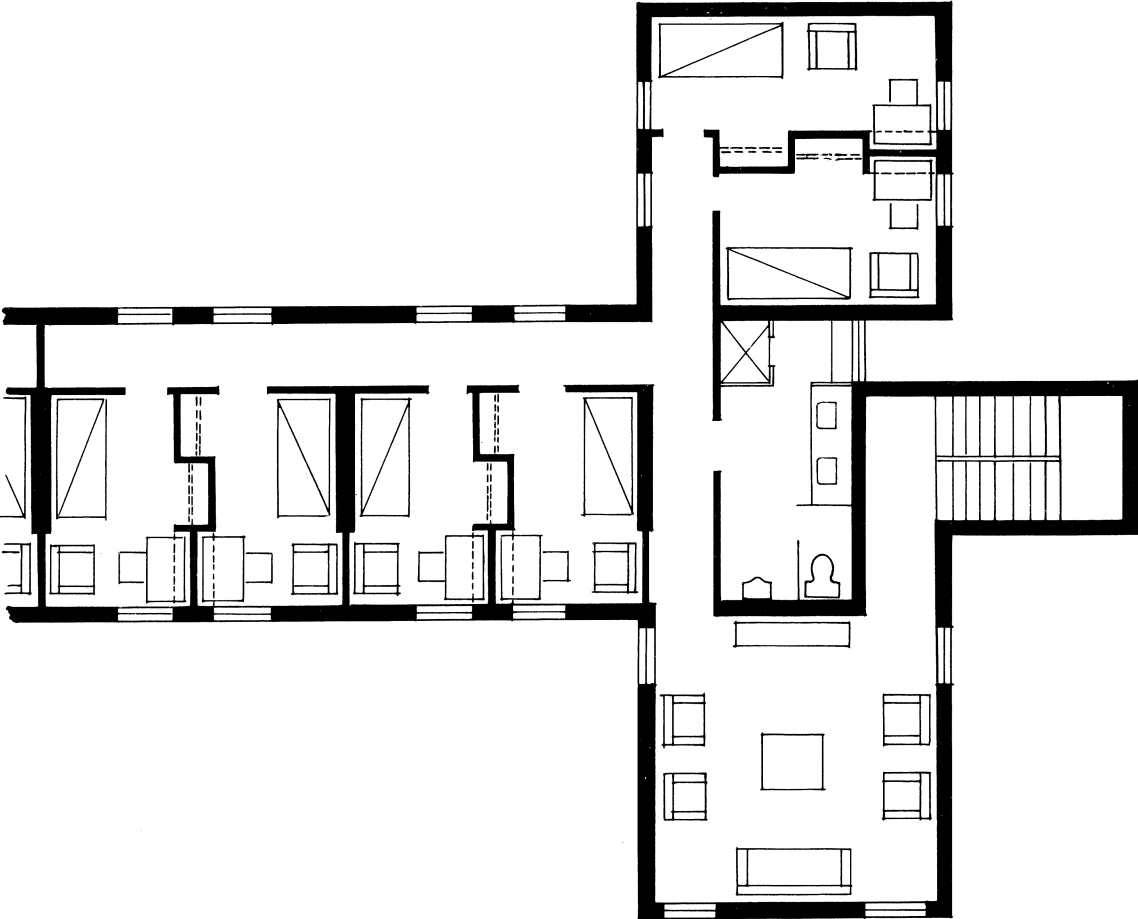
### *Estimated Cost:*

\$300,000



NEW DORMITORY 1, MEN

20



Typical Floor Plan NEW DORMITORY

Scale 0' 5' 10' 20'

## NEW ATHLETIC CENTER

21

*Recommended Facilities:*

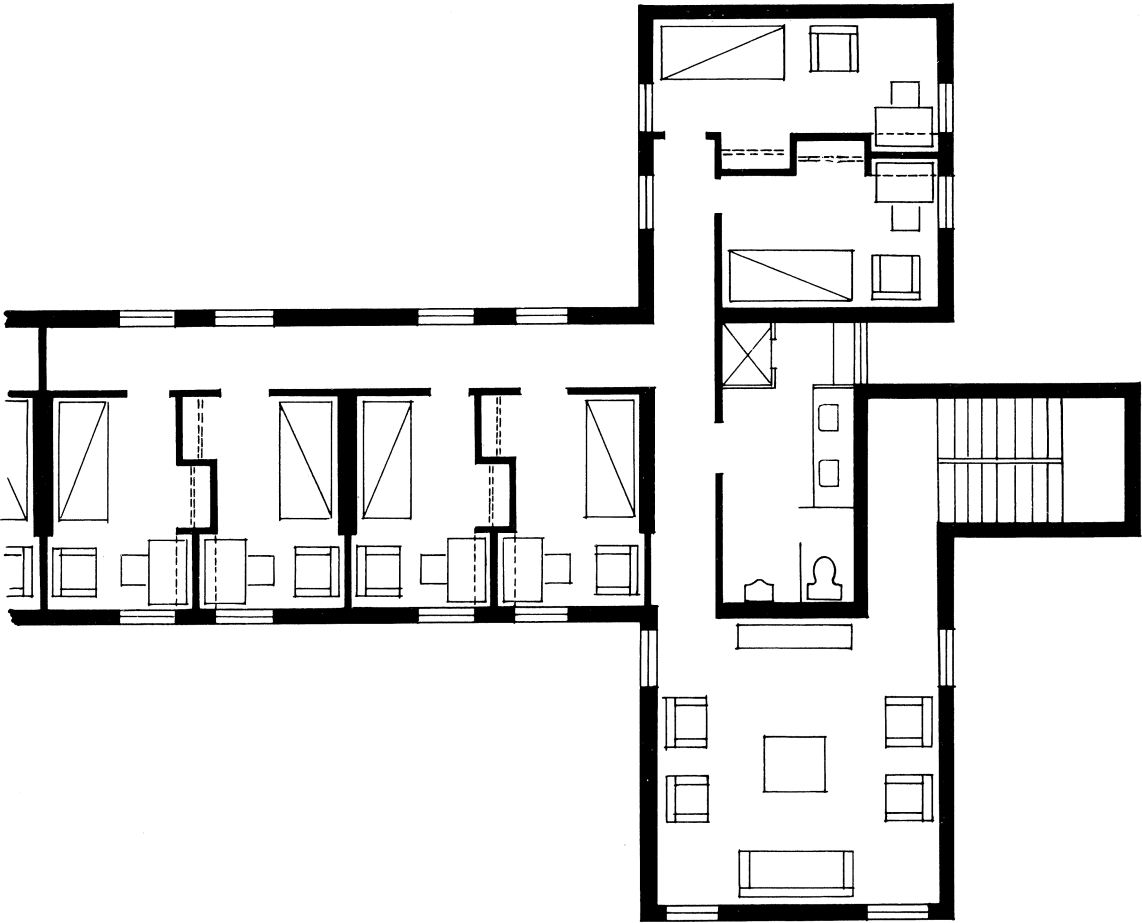
1. Basketball court—for conversion into 4 badminton courts
2. 6 squash courts
3. Bowling alley
4. Swimming pool
5. Gym rooms
6. Lockers and showers

*Estimated Cost:*

\$600,000

NEW DORMITORY 1, MEN

20



Typical Floor Plan NEW DORMITORY

Scale 0' 5' 10' 20'



## SITE WORK

22

1. *Modify brick walks as shown on site plan.*
2. *Develop brick terraces and over-look north of McDowell Hall.*
3. *Trim ivy on buildings.*
4. *Trim existing trees and plant new trees.*
5. *Put electric and telephone lines underground.*
6. *Build brick and wrought iron fence to enclose campus.*
7. *Drain athletic fields.*
8. *Lay out new athletic fields and tennis courts.*
9. *Repair bulkhead along College Creek.*

*Estimated Cost:*

*\$250,000*

