

Mitchell Gallery 2016-17 Exhibitions and Programs

The Essential Line: Drawings from the Dahesh Museum of Art

August 26 - October 16, 2016

First Folio! The Book That Gave Us Shakespeare

November 1 - December 4, 2016

Ruth Starr Rose: Revelations of African American Life in Maryland and the World

January 11 - February 26, 2017

The Fantastic World of Ronald Markman: A Mini-Retrospective

March 10 - April 23, 2017

St. John's College Community Art Exhibition 2017

April 30 - May 14, 2017

Image & Imagination: Anne Arundel County Juried Exhibition 2017

May 23 - June 11, 2017

The Essential Line: Drawings from the Dahesh Museum of Art

August 26 - October 16, 2016



*Henri Gervex (French, 1852-1929), Study for Le Blessé de Guerre
Charcoal, red and white chalk on blue paper, 11" x 18"
Gift of DeCourcy E. McIntosh, Dahesh Museum of Art, 2003.36.*

Although drawing was established as an important training practice in Italy, it was the influence of Paris' *École des Beaux-Arts*, the most important art school in the Western world, that instilled in artists the benefits of observation and constant drawing as the foundation for art making. This collection of 40 drawings from the Dahesh Museum of Art explores this tradition through the works of Lawrence Alma-Tadema, Rosa Bonheur, Léon-Joseph-Florentin Bonnat, Gustave Doré, Théodule-Augustin Ribot, Léopold Robert, and other artists.

Related Events and Programs

August 26

Members Preview Reception. Be the first to preview the “Dahesh Drawings” exhibition at this elegant wine and hors d’œuvres reception from 5:00 to 7:00 p.m. By invitation only, \$15 for non-members. Become a member.

August 28

Opening Reception. Art Educator Lucinda Edinberg will lead a tour of the “Dahesh Drawings” exhibition followed by a hands-on workshop from 3:30 to 5:00 p.m.

September 14

Art Express Lunchtime Tour. Art Educator Lucinda Edinberg will give a lunchtime gallery talk on the “Dahesh Drawings” exhibition from 12:15 to 12:45 p.m.

September 14 to 22

Voyage of Ancient Empires. Mitchell Gallery travel to Amalfi Coast-Pompeii-Sicily-Malta. Visit the Voyage of Ancient Empires page.

September 21

Curator’s Lecture. David Farmer, founding director and current director of exhibitions at the Dahesh Museum of Art, will lecture on “No Day Without a Line Drawn” at 5:30 p.m. in the Conversation Room, across from the Gallery.

September 29

Thursday Try-It. Artist Karen Warshal will give a workshop on drawing associated with “Dahesh Drawings” from 3:00 to 4:30 p.m. Members are free; \$15 for non-members. No experience necessary. Basic materials will be provided. **Registration is required.** Call 410-626-2556.

October 13

Book Club. Join members of the Mitchell Gallery Book Club for a docent tour of the “Dahesh Drawings” exhibition followed by a discussion of "The Art of Drawing" by Charles Bargue from 2:30 to 4:30 p.m. St. John’s College tutor Sarah Benson will lead the discussion. **Registration is required.** Call 410-626-2556.

October 16

Sunday Afternoon Lecture. Art Educator Lucinda Edinberg will lead a tour of the “Dahesh Drawings” exhibition at 3:00 p.m.

First Folio! The Book That Gave Us Shakespeare

November 1 - December 4, 2016

The First Folio is the first complete collected edition of Shakespeare's plays, collated and published in 1623, seven years after his death. Since no original manuscripts survive, the First Folio preserves 36 of Shakespeare's plays, including 18 previously unpublished plays. St. John's College, in partnership with the Annapolis Shakespeare Company for programming support and with the Maryland Humanities for marketing support, has been named the institutional host for Maryland. The Mitchell Gallery is the only venue in Maryland to exhibit this traveling display from the Folger Shakespeare Library.

Related Events and Programs

November 6

Opening Reception. Art Educator Lucinda Edinberg will lead a tour of the "First Folio!" exhibition followed by a hands-on workshop from 3:30 to 5:00 p.m.

November 6

Leadership Mitchell Gallery Members Wine and Cheese Reception from 5:00 to 6:30 p.m. Call 410-626-2556 for details.

November 16

Art Express Lunchtime Tour. Art Educator Lucinda Edinberg will give a lunchtime gallery talk on the "First Folio!" exhibition from 12:15 to 12:45 p.m.

November 29

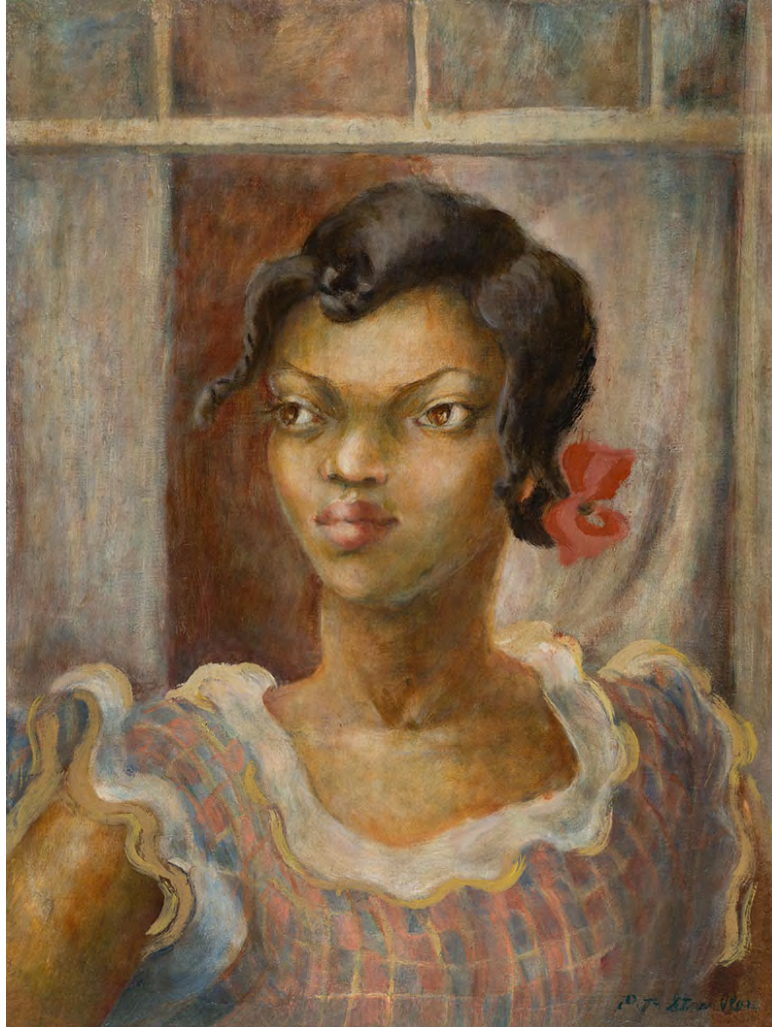
Tuesday Try-It. Artist-bookmakers Joan Machinchick and Ebby Malmgren, assisted by Alice Kurs, will lead a bookmaking workshop associated with the "First Folio!" exhibition from 3:00 to 4:30 p.m. Members are free; \$15 for non-members. No experience necessary. Basic materials will be provided. **Registration is required.** Call 410-626-2556.

December 1

Book Club. Join members of the Mitchell Gallery Book Club for a docent tour of the "First Folio!" exhibition followed by a discussion of *The Millionaire and the Bard: Henry Folger's Obsessive Hunt for Shakespeare's First Folio* by Andrea Mays from 2:30 to 4:30 p.m. Beverly With, director of development (retired), Folger Shakespeare Library, will lead the discussion. **Registration is required.** Call 410-626-2556.

Ruth Starr Rose: Revelations of African American Life in Maryland and the World

January 11 - February 26, 2017



Ruth Starr Rose, Anna May Moaney, 1930, oil on Masonite.

This first comprehensive exhibition of paintings and lithographs by Ruth Starr Rose (1887-1965) offers a rare glimpse into the lives and spiritual world of rural African American life at the turn of the century on Maryland's Eastern Shore. An Art Students League artist, Rose portrays crab pickers, sailmakers, and soldiers, as well as gospel song illustrations, with a dignity and compassion that expresses her deep love for the residents of the Talbot County towns of Copperville and Unionville.

This exhibition is generously supported by the Helena Foundation.

“Ruth Starr Rose” was developed and organized for the Reginald F. Lewis Museum of Maryland African American History & Culture by Guest Curator Barbara Paca, PhD; Exhibition Tour Management by Landau Traveling Exhibitions, Los Angeles, CA.

Related Events and Programs

January 15

Opening Reception from 3:00 to 5:00 p.m. Join members of the Annapolis community for a performance by “The Extensions of Faith Praise Choir,” an interdenominational group, led by Ramocille Johnson. This group of over 30 voices enjoys a strong reputation for their high energy interpretation of gospel songs, hymns, and spirituals. This concert will feature spirituals related to the works by Ruth Starr Rose. Refreshments will follow. (Free and open to the public.)

February 1

Art Express Lunchtime Tour. Art Educator Lucinda Edinberg will give a gallery talk on the “Ruth Starr Rose” exhibition from 12:15 to 12:45 p.m.

February 1

Book Club. Join members of the Mitchell Gallery Book Club for a docent tour of the “Ruth Starr Rose” exhibition followed by a discussion of *Narrative of the Life of Frederick Douglass, an American Slave by Frederick Douglass* from 2:30 to 4:30 p.m. St. John’s College tutor Tom May will lead the discussion. **Registration is required.** Call 410-626-2556.

February 8

Curator’s Lecture. Curator Barbara Paca will lecture on “Labor of Love: Ruth Starr Rose and the Miracle of her Shared Community” at 5:30 p.m. in the Conversation Room, across from the Gallery. Mitchell Gallery members are invited to a wine and cheese reception with the curator immediately following the lecture. Become a member of the Mitchell Gallery.

February 19

Sunday Afternoon Lecture. Art Educator Lucinda Edinberg will lead a tour of the “Ruth Starr Rose” exhibition at 3:00 p.m.

“Ruth Starr Rose” Sponsors: Anne Arundel County Public Schools, Brown Capital Management, City of Annapolis, Historic Annapolis, Maryland Commission on African American History & Culture. This exhibition is funded in part by a grant from the Four Rivers Heritage Area with special funding from Mayor Michael J. Pantelides, Alderman Joe Budge and Alderwoman Rhonda Pindell Charles.



The Fantastic World of Ronald Markman: A Mini-Retrospective

March 10 - April 23, 2017



Ron Markman (American, b. 1931), Fundraiser for the Art Museum, Mixed media, Photography courtesy of Robert Madden.

Inspired by 1930s cartoons and popular culture, Ronald Markman explores intellectual and artistic journeys through literature, historic events, personal observations, and the absurdities of life in this colorful collection of drawings, paintings, and sculptures. This exhibition combines Markman's dedicated academic training with George Grosz and Josef Albers with humor and the limitless possibilities of a nonsensical, fantastical world.

March 10

Members Preview Reception. Be the first to preview the "Ronald Markman" exhibition at this elegant wine and hors d'oeuvres reception from 5:30 to 7:30 p.m. By invitation only. Become a member.

March 22

Art Express Lunchtime Tour. Art Educator Lucinda Edinberg will give a gallery talk on the "Ronald Markman" exhibition from 12:15 to 12:45 p.m.

March 28

Seminar. St. John's tutor David Townsend and artist Ebby Malmgren will lead a seminar related to the exhibition at 7 p.m. Space is limited. **Registration is required.** Call 410-626-2556 to register.

April 4

Tuesday Try-It. Artist Ronald Markman, assisted by Lucinda Edinberg, will lead a workshop associated with the “Ronald Markman” exhibition from 3 to 4:30 p.m. Members are free; \$15 for non-members. No experience necessary. Basic materials will be provided. **Registration is required.** Call 410-626-2556.

April 13

Book Club. Join members of the Mitchell Gallery Book Club for a docent tour of the “Ronald Markman” exhibition followed by a discussion of “*The Overcoat*” by Nikolai Gogol from 2:30 to 4:30 p.m. St. John’s College tutor David Townsend will lead the discussion. **Registration is required.** Call 410-626-2556.

April 23

Artist’s Lecture. Artist Ronald Markman and Art Educator Lucinda Edinberg will lecture on the exhibition with a retrospective overview at 3:00 p.m. in the Conversation Room.

St. John's College Community Art Exhibition 2017

April 30 - May 14, 2017

This annual exhibition is a diverse collection of ceramics, paintings, drawings, prints, sculpture, textiles, and photographs that elegantly represents the artistic talent of the community.



"Woman in a Red Robe" by Journie Kirdain (A17)

April 30

Artists Opening Reception and Moran Prize Announcement from 3:00 to 5:00 p.m.

Image & Imagination: Anne Arundel County Juried Exhibition 2017

May 23 - June 11, 2017



*John T. Hanou
Cadence and Cascade, Lower Muddy Creek Falls, Swallow Falls State Park, MD
Archival Digital Photography*

The Mitchell Gallery is pleased to present this juried, multi-media biennial exhibition of artists who live or work in Anne Arundel County. Two- and three-dimensional works created in diverse media within the last two years are on display. Christopher With, educator (retired) National Gallery of Art and current president of The Washington Print Club, is the exhibition juror.

We are pleased to announce that Best in Show goes to Ed Praybe for his painting, “Dark Window”; Best Two-Dimensional is awarded to Harold Ashby for his archival photograph, “Despair”; and Best Three-Dimensional goes to Gil Ugiansky for his sculpture, “Truncated”. For the online gallery, go to themitchellgallery.org/sales.

May 23

Artists Reception from 5:00 to 7:00 p.m.

MAY 23 - JUNE 11
IMAGE & IMAGINATION



THE MITCHELL GALLERY

A juried, multi-media biennial exhibition of artists who live or work in Anne Arundel County.

MAY 23 - JUNE 11
IMAGE & IMAGINATION



THE MITCHELL GALLERY

A juried, multi-media biennial exhibition of artists who live or work in Anne Arundel County.

MAY 23 - JUNE 11
IMAGE & IMAGINATION



THE MITCHELL GALLERY

A juried, multi-media biennial exhibition of artists who live or work in Anne Arundel County.

MAY 23 - JUNE 11
IMAGE & IMAGINATION



THE MITCHELL GALLERY

A juried, multi-media biennial exhibition of artists who live or work in Anne Arundel County.

MAY 23 - JUNE 11
IMAGE & IMAGINATION



THE MITCHELL GALLERY

A juried, multi-media biennial exhibition of artists who live or work in Anne Arundel County.

MAY 23 - JUNE 11
IMAGE & IMAGINATION



THE MITCHELL GALLERY

A juried, multi-media biennial exhibition of artists who live or work in Anne Arundel County.