

GRADUATE INSTITUTE IN LIBERAL EDUCATION



ST. JOHN'S COLLEGE

SANTA FE, NEW MEXICO

1969

ST. JOHN'S COLLEGE OF ANNAPOLIS, MARYLAND AND SANTA FE, NEW MEXICO
announces the THIRD ANNUAL SESSION

of the GRADUATE
INSTITUTE
IN LIBERAL
EDUCATION

AN EIGHT-WEEK SUMMER PROGRAM FROM JUNE 23 TO AUGUST 15, 1969
DESIGNED FOR TEACHERS AND OTHER COLLEGE GRADUATES
CONDUCTED BY THE FACULTY OF ST. JOHN'S COLLEGE
ON THE CAMPUS IN SANTA FE





ST. JOHN'S COLLEGE

a nonsectarian institution founded in 1696 in Annapolis, Maryland, is the third oldest college in the United States. In the last three decades it has become renowned for its leadership in revitalizing the study of the liberal arts through a curriculum based on the study and discussion of great classical and modern books, and for its exceptionally high academic standards. In 1964 St. John's College opened a second campus in Santa Fe, New Mexico.

THE INSTITUTE OFFERS

to members of the teaching profession — and others who are qualified — an opportunity to pursue an interesting and demanding course in the liberal arts, based on the study of the most excellent works of Western thought.

The program is divided into four subject-areas: Politics and Society, Philosophy and Theology, Literature, and Mathematics and Natural Science. They may be taken in any order. All four will be offered in the summer of 1969.

Students earn nine hours of graduate credit in eight weeks. The program is approved for teacher certification, and those who successfully complete all four summer programs will be awarded the degree of Master of Arts.





THE CARNEGIE CORPORATION

created in 1911 by Andrew Carnegie, provides financial assistance to institutions actively engaged in the advancement and diffusion of knowledge. Grants are made to colleges and universities for studies of critical problems facing American education, for the development of new teaching programs, and for other projects of an experimental nature. The Carnegie Corporation of New York has in part subsidized the first years of the Graduate Institute.

THE PROGRAM

in each subject-area consists of three different kinds of classes designed to develop and strengthen in each student the skills of discussion, reading and writing at the highest levels.

The Seminar is a discussion class, limited to about twenty students and led by one or two Tutors,* in which books of lasting excellence are read and discussed. The works studied are among the primary sources of Western thought. The Seminar combines skillful instruction and the greatest possible degree of freedom of thought and expression.

The Tutorial is a smaller class, of about twelve to fifteen students and a Tutor, devoted to developing the skill of close reading and careful analysis of difficult texts.

The Preceptorial is a still smaller class in which about ten students and a Tutor study a single book or topic. Each student chooses a topic pertaining to one of the books studied and, under faculty guidance, writes a long essay. The last two weeks of the session are devoted to conferences with the Preceptorial Tutor and to the rewriting of the essay in final form. With the exception of the students in Mathematics and Natural Science, a student studying in one subject-area may be permitted to join a Preceptorial offered in one of the other subject-areas.

There are no lecture courses at St. John's. There are, however, special lectures given by distinguished visiting lecturers. Among the visiting lecturers during the first two summers of the Institute were Alfred Kazin, Professor of English, The State University of New York at Stony Brook; Martin Diamond, Professor of American Political Institutions, Claremont College; Harry Jaffa, Professor of Political Philosophy, Claremont College; Jacob Klein and Eva Brann, Tutors at St. John's College in Annapolis.

**There are no academic ranks in the St. John's Faculty. All members of the Faculty have the title of Tutor.*

POLITICS AND SOCIETY

THE CURRICULUM
Summer, 1969

SEMINAR

meets for two hours, two evenings a week, Monday and Thursday, from 8 p.m. to 10 p.m.

WEEK

TUTORIAL

meets for four classes, five hours a week, in the morning.

PRECEPTORIAL

1

Mill, **On Liberty**

2

Marx and Engels, Selected Writings

3

Freud, **Civilization and Its Discontents**

4

Nietzsche, **The Genealogy of Morals**

5

Plato, **The Republic**
Books I and II

6

The Republic
Books III and IV

7

The Republic
Books V, VI and VII

8

The Republic
Books VIII, IX and X

9

Machiavelli, **The Prince**

10

Locke, **Of Civil Government**
Chapters I-X

11

Of Civil Government
Chapters XI-XIX

12

Rousseau, **On the Origin of Inequality, I**

13

On the Origin of Inequality, II

14

The Declaration of Independence
Lincoln, Selected Speeches

15

Madison, Hamilton and Jay, **The Federalist**,
Numbers 1, 9, 10, 39, 51, 57 and 71

16

Shakespeare, **Coriolanus**

1

Aristotle, **Politics**, Book I
(1 Week, 4 Classes, 5 Hours)

2

Aristotle, **Politics**, Book III
(1 Week, 4 Classes, 5 Hours)

3

St. Thomas Aquinas, **Questions on Law**
(2 Weeks, 8 Classes, 10 Hours)

4

5

Hobbes, **Elements of Law**
(2 Weeks, 8 Classes, 10 Hours)

6

7

Kant, **Perpetual Peace**
(1½ Weeks, 6 Classes, 7½ Hours)

8

Kant, **Idea of a Universal History with
Cosmopolitan Intent** (½ Week, 2 Classes, 2½ Hours)

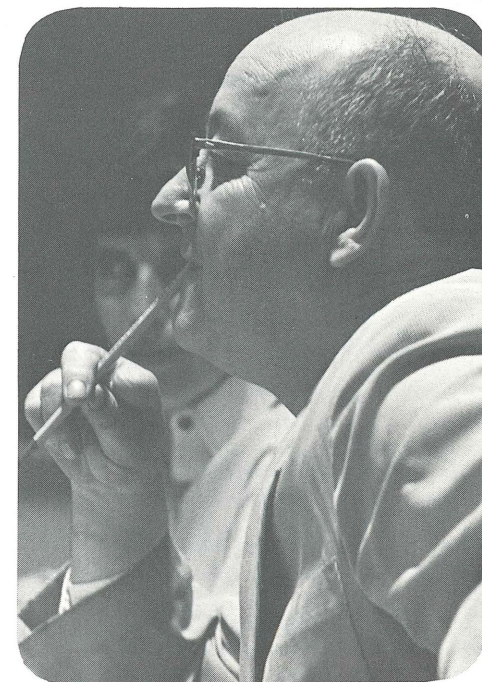
Students in the Politics and Society, Philosophy and Theology, and Literature programs will select their Preceptorials from the same list of offerings. The precise list of subjects in 1969 will depend upon the interests of the Tutors and students. The following is a list of the topics that were offered during the first two sessions of the Institute, in the summers of 1967 and 1968:

Plato: **The Meno** and the **Gorgias**
Aristotle: **The Nicomachean Ethics**
Aristotle: **The Politics**
Thucydides: **The Peloponnesian War**
Genesis
Dante: **The Divine Comedy**
Cervantes: **Don Quixote**
Pascal: **Pensées**
Molière: **Tartuffe** and other plays
Locke: **Of Civil Government**
The Social Contract: Hobbes, Locke and Rousseau
Dostoevski: **The Brothers Karamazov**


SEMINAR	WEEK	TUTORIAL
1 Ayer, Language, Truth, and Logic	1	Locke, An Essay Concerning Human Understanding (1 Week, 4 Classes, 5 Hours)
2 Heidegger, "What is Philosophy?"		
3 Plato, Phaedo	2	Hume, An Enquiry Concerning Human Understanding (1 Week, 4 Classes, 5 Hours)
4 Phaedo		
5 Aristotle, Physics , Book II	3	Plato, Theaetetus (1 Week, 4 Classes, 5 Hours)
6 Physics , Book II		
7 Genesis	4	Plato, Sophist (1 Week, 4 Classes, 5 Hours)
8 Exodus		
9 Amos, Jonah	5	Aristotle, Metaphysics , Books VI and XII (1 Week, 4 Classes, 5 Hours)
10 The Gospel According to St. John		
11 St. Thomas Aquinas, Summa Theologica , I, I	6	
12 Summa Theologica , I, I		
13 St. Paul, The Epistle to the Romans	7	Kant, Critique of Pure Reason , selections (3 Weeks, 12 Classes, 15 Hours)
14 Calvin, The Institutes of the Christian Religion		
15 Descartes, Meditations	8	
16 Meditations		

PRECEPTORIAL

For a description of the Preceptorial in Philosophy and Theology, see the description under Politics and Society.



SEMINAR	WEEK	TUTORIAL	PRECEPTORIAL
1 Homer, <i>Iliad</i> , I-VI	1	Hume, "Of the Standard of Taste" (1 Week, 4 Classes, 5 Hours)	For a description of the Preceptorial in Literature, see the description of the Preceptorial under Politics and Society.
2 <i>Iliad</i> , VII-XII			
3 <i>Iliad</i> , XIII-XVIII	2	Close analysis of selected poems (Wyatt, Shakespeare, Donne, Marvell, Wordsworth, Blake, Keats and Yeats)	
4 <i>Iliad</i> , XIX-XXIV			
5 Plato, <i>Ion</i>	3	and selected prose (Hobbes, Swift, Jane Austen, Lincoln and Dickens) (3 Weeks, 12 Classes, 15 Hours)	
6 Homer, <i>Odyssey</i> , I-VI†			
7 <i>Odyssey</i> , IX-XVI	4		
8 <i>Odyssey</i> , XVII-XXIV			
9 Aeschylus, <i>Agamemnon</i>	5	Chaucer, <i>Canterbury Tales</i> The Miller's Tale The Reeve's Tale The Nun's Priest's Tale (2 Weeks, 8 Classes, 10 Hours)	
10 <i>Choephoroe</i> <i>Eumenides</i>			
11 Sophocles, <i>Oedipus Rex</i>	6		
12 Aristotle, <i>Poetics</i>			
13 Euripides, <i>Hippolytus</i>	7	Shakespeare, <i>King Lear</i> (2 Weeks, 8 Classes, 10 Hours)	
14 Aristophanes, <i>The Frogs</i>			
15 Plato, <i>Phaedrus</i>	8		
16 <i>Phaedrus</i>			





SEMINAR		WEEK	TUTORIAL	PRECEPTORIAL
1	Plato, Timaeus	1	Euclid, Elements , Book I with readings from Aristotle, Posterior Analytics (3 Weeks, 12 Classes, 15 Hours)	<p>All Preceptorials in this part of the program will be based upon careful observation of phenomena, and, wherever appropriate, experimental work in the laboratory. The precise listing of subjects will be determined by the interests of the Tutors and students. The subjects for 1969 will probably be drawn from the following list:</p> <p>Ptolemy and Copernicus Galileo, Two New Sciences Huygens, Treatise on Light Foundations of the Particle Theory of Matter Lamarck and Darwin Embryology Genetics</p>
2	Timaeus			
3	Lucretius, On the Nature of Things , Books I-III	2		
4	On the Nature of Things , Books IV-VI			
5	Aristotle, Physics , Books I.1, II	3		
6	Physics , Book II*			
7	Physics , Book IV	4		
8	Physics , Book VIII			
9	Bacon, The New Organon , Book I	5		
10	The New Organon , Book II, selections			
11	Descartes, Discourse on Method	6		
12	Newton and Descartes, Definitions and Laws of Motion			
13	Einstein, Essays	7		
14	Poincaré, Science and Hypothesis			
15	Darwin, The Origin of Species , selections	8		
16	Darwin, The Descent of Man , selections			

ADMISSIONS, FEES AND RELATED INFORMATION

DEGREE REQUIREMENTS

Students seeking to earn the degree of Master of Arts from St. John's College must complete the four-summer sequence of study (or three summers at St. John's if they have nine hours of graduate credit from another institution). Students need not commit themselves to more than one summer of study at a time, nor need they attend in consecutive summers. The four subject-areas may be taken in any order.

FEES

Tuition	\$270.00
Room	120.00
Board	150.00
Total	\$540.00
Matriculation fee (for new students).....	25.00

Students living in the dormitories will pay full board for meals in the dining hall. Off-campus students will purchase meal tickets for five lunches and two dinners (on seminar evenings) weekly in the dining hall.

Board for off-campus students.....\$ 60.00

STUDENT LOANS AND FELLOWSHIPS

A number of fellowships are available to qualified students, and resident New Mexico students are eligible for loans through the Student Guaranteed Loan Association. The Institute Director will acquaint all students with available aid upon request.

ELIGIBILITY

Applicants must have a Bachelor's degree from an accredited institution, or the equivalent in study and experience. Although the curriculum is designed primarily for teachers, applications are invited from others. All decisions on applications will be made by the Admissions Committee of the Faculty.

CREDITS

Nine hours of transferable graduate credit, approved for teacher certification purposes by the New Mexico

State Board of Education, are awarded for successful completion of each eight-week summer session. Students who are planning to receive the Master's degree from another institution are advised to consult that institution before enrolling at St. John's. The four-summer Institute will provide a total of 36 graduate credit hours.

TIME-TABLE FOR APPLICATIONS

Applications should be submitted by April 15, 1969, to insure full consideration. It is advantageous to apply as early as possible. Applicants will be notified of a decision within three weeks after the receipt of complete applications, including supporting documents.

ROOM AND BOARD

Students will be expected to live in the dormitories on campus, but permission to live off-campus will be granted for good reason. The dormitory rooms are spacious and unusually attractive; many have balconies looking out on the nearby mountain ranges. Dormitory suites are available for married couples without children. All dormitory students will be provided 21 meals a week in the students dining hall. Off-campus students are required to purchase meal tickets for five lunches and two dinners (on seminar evenings) in the dining hall each week.

The College cannot take responsibility for securing off-campus housing for students, and those students who plan to live in town are advised that housing is difficult to obtain during the summer months.

MEDICAL SERVICES

The College maintains a well-equipped modern infirmary located in the women's dormitory complex, and the services of a resident Registered Nurse are provided for Institute students. Sick call is held twice daily, and referrals to Santa Fe physicians are made when necessary.

A certificate of health is sent to applicants who have been accepted to the Institute. These forms require a physical examination by a physician, and must be completed prior to registration.

SANTA FE

Santa Fe is the oldest capital city in the United States and has served as fortress and administrative headquarters for four sovereign governments. It was founded in 1610 by mission priests as the City of Holy Faith.

Known today as the "City Different," Santa Fe offers rewarding cultural activities throughout the summer and splendid scenery within short distances. The world-renowned Santa Fe Opera and the Santa Fe Theater Company present excellent professional performances, and the city itself contains a wealth of ancient landmarks, historical sights and religious shrines, most of which are carefully preserved and open to visitors throughout the summer months. Book stores, shops, galleries and studios predominate in the historic sections of the city.

St. John's College is located on a 260-acre site on the western slopes of the Sangre de Cristo Mountains within the city of Santa Fe, and is a 7-minute drive from the downtown plaza. Completed in 1964, the College offers beautiful modern facilities, all of which will be open to Institute students. The College tennis courts, athletic field and horseback riding facilities are made available to students, and bus service is provided from the College to the downtown plaza. Students have arranged their own field trips to nearby Indian Pueblos.

Santa Fe is at an altitude of 7,000 feet, and the student should be prepared for warm days and cool evenings. The climate is unexcelled for summer comfort. The temperature rarely reaches 90° in mid-day, and never fails to fall below 60° in the evening. Sweaters and casual clothing are recommended.



**Richard D. Weigle, President
St. John's College**

received B.A., M.A. and Ph.D. degrees from Yale University. Mr. Weigle taught at Yale-in-China and at Carleton College before serving in World War II in the Far East and then in the Far Eastern Office of the Department of State. He came to St. John's in 1949 as President, and founded the Santa Fe campus in 1964. He is a past President of the Maryland Association of Boards of Education and past Chairman of the Association of American Colleges.

THE FACULTY IN 1968



Ford Keeler Brown

B.A., University of Washington, 1920; D.Phil., Oxford University, 1926; Assistant in English, 1919-20; Rhodes Scholar, Oxford University, 1920-23; Assistant Professor of English, 1923-25, University of Washington; Associate Professor of English, St. John's College, 1925-29; Professor of English, St. John's College, 1929-39; Active duty with the United States Navy, 1942-45; Tutor, St. John's College, 1939-68; Addison E. Mullikin Tutorship, 1959-68; Santa Fe, 1964-65.

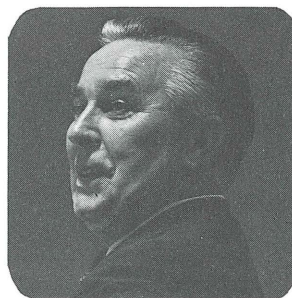
Joseph Winfree Smith, Jr.

B.A., 1934; M.A., 1935, University of Virginia; B.D., Virginia Theological Seminary, 1938; Ph.D., University of Virginia, 1948; Student at the Institut Catholique de Paris, 1951-52; Deacon-in-charge, 1938-39, Rector, 1939-41, St. Paul's Church, Ivy Depot, Virginia; Tutor, St. John's College in Annapolis, 1941 to the present; Assistant Dean, 1947; Addison E. Mullikin Tutorship, 1959 to the present; Acting Director, Integrated Liberal Arts Curriculum, Saint Mary's College, California, 1966-67.



**Elliott Zuckerman, Director
Graduate Institute in Liberal Education**

is a graduate of Columbia and Cambridge University where he was the Kellett Fellow in the Humanities at Clare College, and received his B.A. and M.A. degrees in English Literature. He went on to receive his M.A. and Ph.D in Modern European History at Columbia University, and he taught there before joining the Faculty of St. John's College in Annapolis in 1961. He also lectured in history and music at the New School in New York City. He is the author of *The First Hundred Years of Wagner's Tristan*.

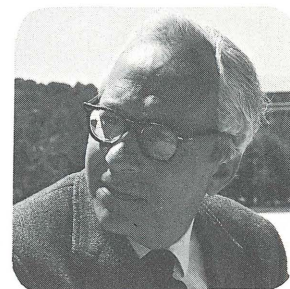


Hugh P. McGrath

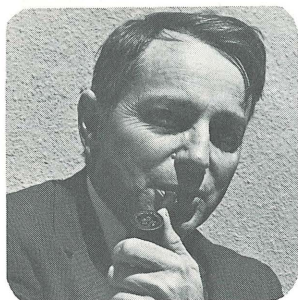
B.A., University of Liverpool, 1934; Diploma in Education, University of Liverpool, 1935; Language Instructor, London County Council, and Language studies at Universities of Liverpool, London, Paris, Dijon, 1936-40; Armed Forces, 1940-46; Language Instructor, London County Council, 1946-47; Visiting Professor, University of Puerto Rico, 1960; Tutor, St. John's College in Annapolis, 1948 to the present.

Douglas Allanbrook

Boston University, 1938; Brown University, 1939-41; University of Florence, 1946; B.A., Harvard College, 1948; Active duty with the United States Army, 1942-45; Traveling Fellow, Harvard University, 1948-50; Pupil of Nadia Boulanger, Paris, 1948-50; Fulbright Fellow in Italy—Conservatorio San Pietro a Majella, Pupil of Ruggiero Gerlin in Harpsichord and Early Keyboard Music, 1950-52; Teacher of Composition and Theory, Peabody Conservatory, 1955-57; Tutor, St. John's College in Annapolis, 1952 to the present.



THE FACULTY IN 1968



Samuel Emmons Brown, Jr.

Harvard College, 1936-37; Diploma, Black Mountain College, 1945; M.A., 1956; Ph.D., 1962, Indiana University; private tutoring, 1946-48; Director of Music, Windsor Mountain School, 1948-49; Director of Music, Verde Valley School, 1950-53; Part-time Teacher, Indiana University, 1956-57; Tutor, St. John's College in Annapolis, 1958-65; Santa Fe, 1965 to the present.

Michael Littleton

B. S., 1954; B. A., 1955, University of Maryland; B.D., Hartford Seminary Foundation, 1960; S.T.M., Union Theological Seminary, 1967; United States Navy, 1955-57; Tutor, St. John's College in Annapolis, 1960 to the present.



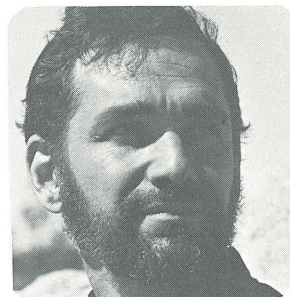
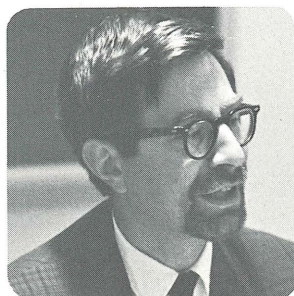
Dean R. Haggard

B.A., Reed College, 1955; Instructor in Mathematics, Loyola College, 1957-60; Fels Fund Fellow in Philosophy, The Johns Hopkins University, 1955-57, 1960-61; Tutor, St. John's College in Annapolis, 1961-66; Santa Fe, 1966 to the present.



Samuel S. Kutler

B.A., St. John's College, 1954; Assistant Mathematician, 1955, Associate Mathematician, 1957, Mathematician, 1961, The Johns Hopkins University, Applied Physics Laboratory; Graduate Study, American University, 1955-; Instructor, American University, 1960; Visiting Tutor, St. John's College, 1960; Tutor, St. John's College in Annapolis, 1961 to the present.



Robert D. Sacks

B.A., St. John's College, 1954; Ph.D., The Johns Hopkins University, 1963; Hebrew University, Jerusalem, 1954-56; Ecole des Langues Orientales Vivantes, 1956-57; The University of Chicago, 1957-59; Tutor, St. John's College in Annapolis, 1961 to the present; Visiting Tutor, Saint Mary's College, California, 1968-69.

Robert A. Neidorf

B.A., The University of Chicago, 1951; M.A., 1955; Ph.D., Yale University, 1959; Instructor and Assistant Professor of Philosophy, Bucknell University, 1959-62; Tutor, St. John's College in Annapolis, 1962-64; Assistant and Associate Professor of Philosophy, State University of New York at Binghamton, 1964-67; Tutor, St. John's College in Santa Fe, 1967 to the present.



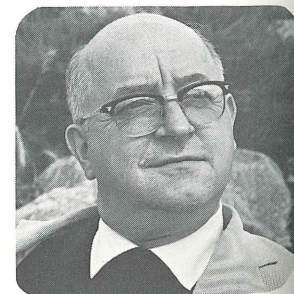
David Clifford Jones

B.A., St. John's College, 1959; University Fellow, The University of Melbourne, 1961-62; M.A., The University of Melbourne, 1962; University Fellow and Bess Heflin Fellow, The University of Texas, 1962-64; Tutor, St. John's College in Annapolis, 1964-65; Santa Fe, 1965 to the present.



Brother S. Robert, F.S.C.

B.A., Saint Mary's College; Ph.L., Université Laval (Quebec); Saint Mary's College, 1941-44, 1946 to the present. Special Studies in Rome, 1952-53; Leave of absence, 1964-65; Visiting Tutor, St. John's College, 1967-68.



ADDRESS ALL INQUIRIES:

ELLIOTT ZUCKERMAN, DIRECTOR
GRADUATE INSTITUTE IN LIBERAL EDUCATION
ST. JOHN'S COLLEGE
SANTA FE, NEW MEXICO 87501

