

ABSOLUTE - LIVE AND ONLINE BIDDING

AUCTION

Tuesday, July 7th at 10AM

Directions: From Greenville, KY, at the intersection of Main St. and Hopkinsville St (US Hwy 62), take Hopkinsville St. west for 0.6 miles. Turn south on Weir St. (KY-171) and continue for 0.3 miles to arrive at the properties. Watch for signs!

Since we no longer need these properties, Kurtz Auction & Realty has been authorized to sell the following **regardless of price:**

INVESTMENT OPPORTUNITIES IN 7 TRACTS

All acreage totals were calculated using mapping systems.
All boundary lines and totals are approximate.

Tract 1:

- .88 +/- acres
- Zoned Residential
- Road frontage on Weir St. and Bard Rd.

Tract 2:

- 1.07 +/- acres
- Zoned residential
- Road frontage on Weir St. and Bard Rd.

Tract 3:

- 3 +/- acres
- Zoned commercial
- Road frontage on Weir St.

Tract 4:

- 2.26 +/- acres
- Zoned residential
- Road frontage on Bard Rd.

Tract 5:

- 1.28 +/- acres
- Zoned residential
- Road frontage on Bard Rd.

Tract 6:

- 2 +/- acres
- Zoned residential
- Road frontage on Weir St.

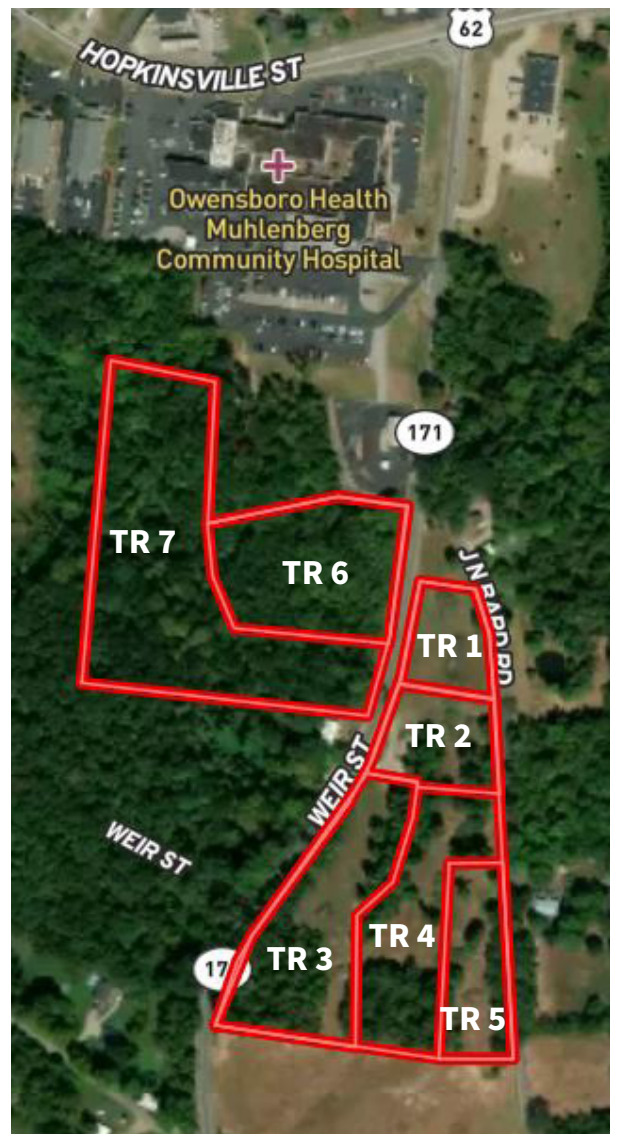
Tract 7:

- 5 +/- acres
- Zoned residential
- Road frontage on Weir St.

TERMS: 10% down at the auction with the balance due by August 21, 2026. Full possession with delivery of deed at closing. 2026 property taxes will be prorated. Seller to convey all mineral rights they own, if any.

Visit kurtzauction.com for online bidding terms.

AUCTIONEER'S NOTE: These properties are conveniently located less than one mile south of the Muhlenberg County Hospital in Greenville and offers excellent potential for development, investment, or personal use. Whether you're looking to build a home, expand your portfolio, or own land within the city limits, this property deserves your attention. Please call with any questions!



FOR MORE INFORMATION CONTACT KELSEY EDGE, AUCTIONEER.

OWNER: Slinker Family

800-264-1204

kurtzauction.com

KURTZ
AUCTION & REALTY®