

ABSOLUTE AUCTION

Wednesday, March 18th at 10AM

LOCATION: Carter Ferry Road, Centertown, KY 42328

From the intersection of Hwy 85 and Hwy 69 in Centertown, KY, 7.0 miles Southwest of Hartford, Take Hwy 85 for 1.4 miles, then turn east on Carter Ferry Road; the property will be on your right. **Watch for Signs!**

Since we no longer need this property, Kurtz Auction and Realty has been authorized to sell the following, **regardless of price:**

229.311+/- ACRES - 3 TRACTS

**AUCTION SITE WILL
BE ON TRACT 3**

Tract 1: 69.961 +/- Acres

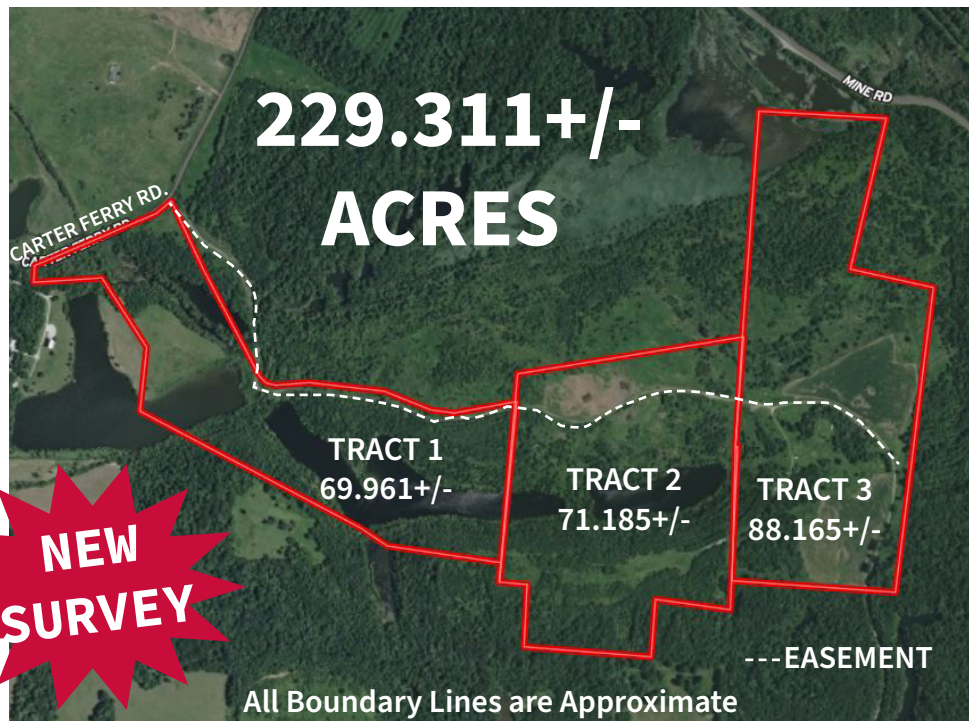
- Approximately 700' of Frontage on Carter Ferry Road
- Hunting and Recreational Land
- Strip Pit Lake

Tract 2: 71.185 +/- Acres

- Access by Easement off Carter Ferry Road
- Hunting and Recreational Land
- Strip Pit Lake

Tract 3: 88.165 +/- Acres

- Access by Easement off Carter Ferry Road
- Hunting and Recreational Land
- 20+/- Tillable Acres
- Internet Available



Farm Equipment:

International 1586 Tractor; International 656 Tractor; 1979 International 1924 5 Series Truck with 402 Int'l 15spd; 1997 Chevy 3500 Flatbed 6.5L Diesel Auto; Tufliner 5 Shank Ripper; Glencoe 12'-12 Shank Chisel Plow; John Deere 12' Heavy Disc; 22' Finish Disc w/Seed Bed Conditioner; John Deere 7000 6-30" Row Planter; John Deere 8300 13' Bean Drill; Kuker 3pt. 12' Sprayer; 1400 Ga. Nurse Tank with Hoses; Best Way 60' Pull Type Sprayer; Vermeer 11 Disc 20' Hay Rake; Vermeer 605K Round Baler; FMC HRD Side Winder Ditcher; International 1300 Mower; 21' Donahue Trailer; 2-4000 bu Grain Bins; Complete Set of Manual Grain Bin Jacks; Hay Spear; Hay Fork; 4-300-Gal Stand Fuel Tanks; 4- 300 Gal. Liquid Storage Tanks; 8' x 16' Lake Floating Dock; 3- 20' Storage Containers; 2- 40' Storage Containers; Camper; Misc. Items

REAL ESTATE TERMS: 10% down at the auction, balance due on or before May 4th, 2026. Property taxes will be prorated. Farming and hunting rights will be given the day of the auction. Minerals: Seller is making no reservation of mineral rights they own, if any. Possession with delivery of deed at closing.

EQUIPMENT TERMS: Payment in full at the auction by cash, check, debit or credit card. Credit/Debit card payments incur a 3.5% convenience fee. All items sell "as-is, where-is" with no warranties.

FOR MORE INFORMATION CONTACT KELSEY EDGE, AUCTIONEER.

OWNER: Mike & Kelly Roe

800-264-1204

kurtzauction.com

KURTZ
AUCTION & REALTY®