

319+/- Acres

FOR SALE

\$3,500,000

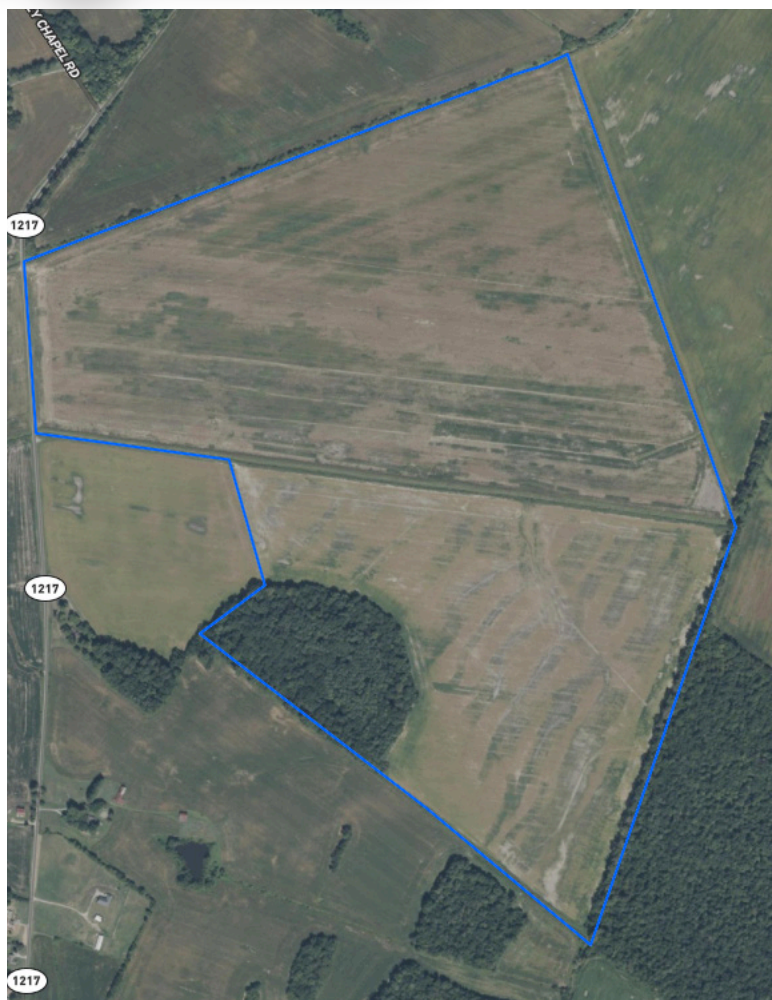
Pruitt Agnew Rd. (Hwy. 1217), Henderson Co., KY

319+/- Tillable Acres

DIRECTIONS: From the Henderson Bypass and Hwy. 1299 take Hwy 1299 south for 1.5 miles then west on Hwy 1217 (Pruitt Agnew road) 0.8 miles to the property.

Farm with 319+/- tillable acres of primarily flat property 2.3 miles south of the Henderson bypass (Hwy. 425). This farm has approximately 300 acres currently being used for cropland with the remainder in woods. The property has approximately 1000 feet of frontage along Pruitt Agnew road (Hwy. 1217). The primary soil type is Karnak Silty Clay.

AGENTS NOTE: This is an excellent opportunity to purchase a very good Henderson County tillable farm in one tract. The chance to buy a farm with this much acreage at one location does not come around often.



Please call David Hawes at 270-929-1211 for more information.



Contact:
David Hawes
Kurtz Auction & Realty
270-929-1211

KURTZ
AUCTION & REALTY®