

ESTATE

AUCTION

Tuesday, July 29th at 10:00 AM

Location: 432 Maple Avenue, Owensboro, KY

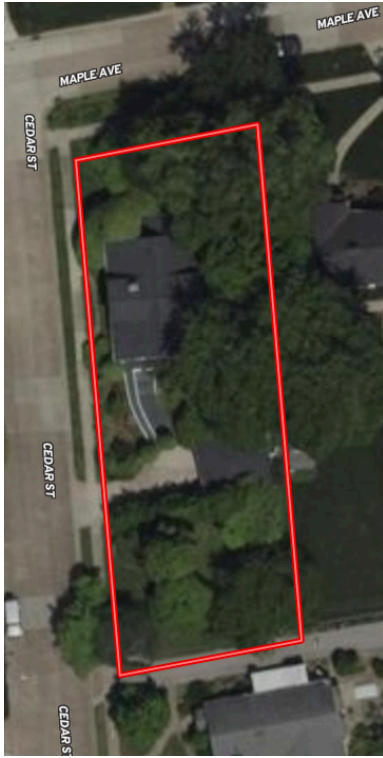
From the intersection of Frederica Street and Maple Avenue go west on Maple Avenue 3 blocks, the property is at the southeast corner of Maple Avenue and Cedar Street.

WATCH FOR SIGNS.

Kurtz Auction and Realty Co. has been authorized by the Mary Bryan Hood Estate for the benefit of The Owensboro Museum of Fine Art Foundation, to sell the following **REGARDLESS OF PRICE:**

HOME AT 432 MAPLE AVENUE Antiques • Furniture • Collectibles

Preview of
Real Estate
Tues., July 22nd
4:30-6:00 pm



This centrally located craftsman style home is a **3 bedroom, 1.5 bath** structure. There is a living, dining, bedroom, kitchen, full bath, and pantry on the first floor. The second floor has two bedrooms; a bonus room between the bedrooms and a half bath. There are 2039 square feet of living space along with a basement that has the furnace and ample storage space. A new roof has been installed and siding repair is being scheduled.



There is a covered front porch and additional porch area to the east side of the home. The rear entrance to the home has steps and a ramp constructed out of deck boards. There is also a detached carport behind the home that is accessed from Cedar Street. The rear of the property has mature landscaping and extends to the adjacent alley. The lot has 68' of frontage on Maple Ave. and 190' on Cedar St.

REAL ESTATE TERMS: 10% down at the auction, balance due on or before Sept. 12, 2025. 2025 taxes will be prorated.

ANTIQUES, FURNITURE, COLLECTIBLES, OTHER SIDE

FOR MORE INFORMATION CONTACT DAVID HAWES, AUCTIONEER, 270-929-1211.

**SELLER: Mary Bryan Hood Estate
Honorable Tom Neal, Executor**

800-264-1204

kurtzauction.com

KURTZ

AUCTION & REALTY®

Announcements made at auction take precedence over printed material

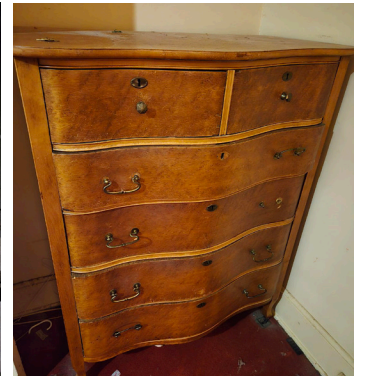
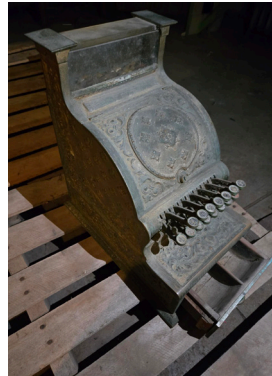
ESTATE

AUCTION

Tuesday, July 29th at 10:00 AM

Location: 432 Maple Avenue, Owensboro, KY

Antiques • Furniture • Collectibles



Antiques

Walnut twin beds, walnut dresser, full bed, lowboy dresser, Birdseye maple chest of drawers, three drawer chest, marble top maple chest, walnut bedside tables, walnut dresser base, buffet, dining room table and hutch, oak hall tree, oak wash stand, walnut veneer sofa table, Singer sewing machine, oak cabinet, cash register, oak cabinet etc.

Furniture

Rattan desk and chair, ornate table, metal dining set, sofa tables, wing back chairs, other chairs, sofa, end tables, TV stand, recliner, etc.

Collectibles

Serving pieces, Sterling silver flatware, vintage music selector, several plant stands, mirrors, lamps, Seeburg metal chest, flat screen TV, planters, Christmas decorations, glassware, dishware and more.

PERSONAL PROPERTY TERMS: Payment in full at the auction by cash, check, or credit/debit card. A 3.5% convenience fee will be charged for credit or debit cards.

REAL ESTATE ON OTHER SIDE

FOR MORE INFORMATION CONTACT DAVID HAWES, AUCTIONEER, 270-929-1211.

SELLER: Mary Bryan Hood Estate
Honorable Tom Neal, Executor

800-264-1204

kurtzauction.com

KURTZ

AUCTION & REALTY®

Announcements made at auction take precedence over printed material