



Commercial Property

FOR SALE

\$239,000

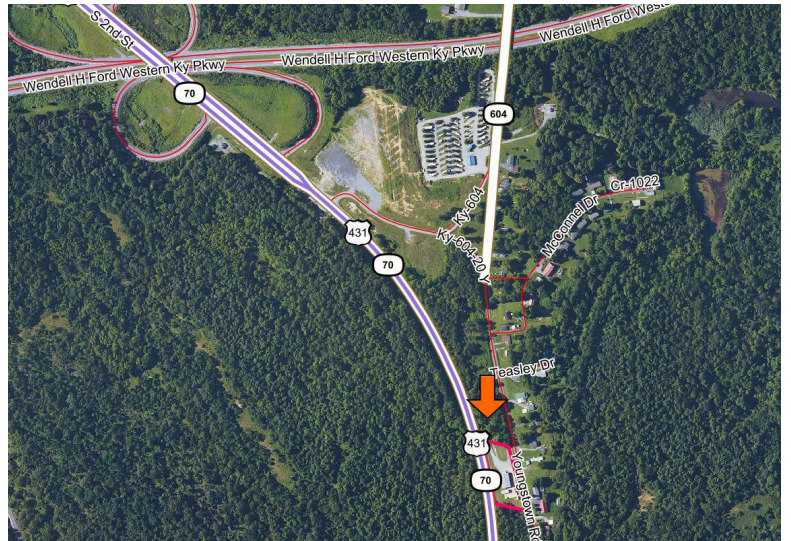
US Hwy. 431 at Central City, KY

**4000 sq. ft. Free Span Metal Building
1.4 Acres**

DIRECTIONS: From the Western Kentucky Parkway, and US Highway 431 at Central City, KY go south on Hwy 431 one-half mile to the property.

- High visibility to traffic
- Concrete parking and loading areas.
- Open inside for counter space, offices, or storage.
- Overhead door (10' x 10')
- Men's & Women's restrooms
- Breakroom
- Heavy duty storage racks

AGENTS NOTE: This property offers a very flexible metal building for multiple business uses. It is very close to the Western Kentucky Parkway and just south of Central City Kentucky. If you would like to start a business in the area, check out this property.



Please call David Hawes at 270-929-1211 for more information.



Contact:
David Hawes
Kurtz Auction & Realty
270-929-1211

KURTZ
AUCTION & REALTY®