

ABSOLUTE AUCTION

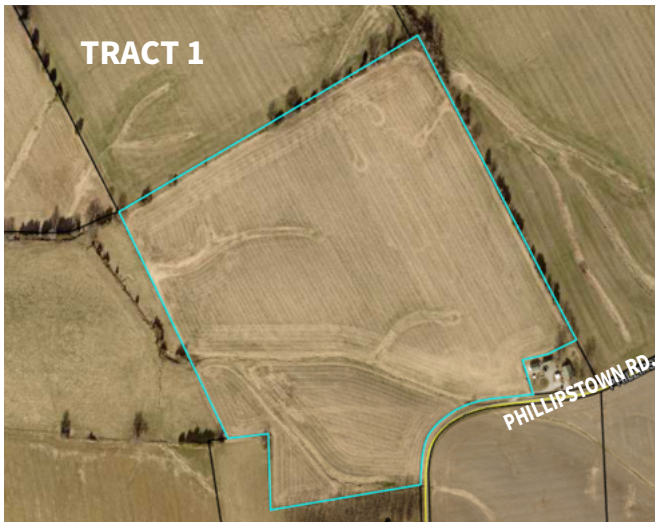
Thursday, February 19th - 10 AM

LOCATION: Phillipstown Road, Bremen, KY. 42325

From KY. Hwy. 81 in Bremen turn south onto KY. Hwy. 175 S for three miles, then continue on Phillipstown Road .9 miles to the property. **Watch for signs!**

In order to settle the Wilma Harlan Estate, Kurtz Auction and Realty has been authorized to sell the following **regardless of price:**

108.73 ACRES • CROPLAND



Tract 1

- 48.90+/- acres
- 712.1'+/- of road frontage
- Flat productive cropland
- Primary soil types are Hosmer and Belknap silt loams

Tract 2 - AUCTION SITE

- 59.83 acres
- 2,006'+/- of road frontage
- Gently rolling to flat productive cropland
- Primary soil types are Sharon and Hosmer silt loams

Terms: 10% down at the auction with the balance due by April 5th, 2026. Possession with delivery of the deed at closing. 2026 property taxes will be prorated. Farming rights will be granted day of auction. Inspect the property anytime, at your own risk.

FOR MORE INFORMATION VISIT KURTZAUCTION.COM OR CONTACT AMY WHISTLE, AUCTIONEER

Owners: Wilma Harlan Estate

Executor: Gary Harlan

800-264-1204

kurtzauction.com

KURTZ

AUCTION & REALTY®