

N.Y.C.

J 90

SS

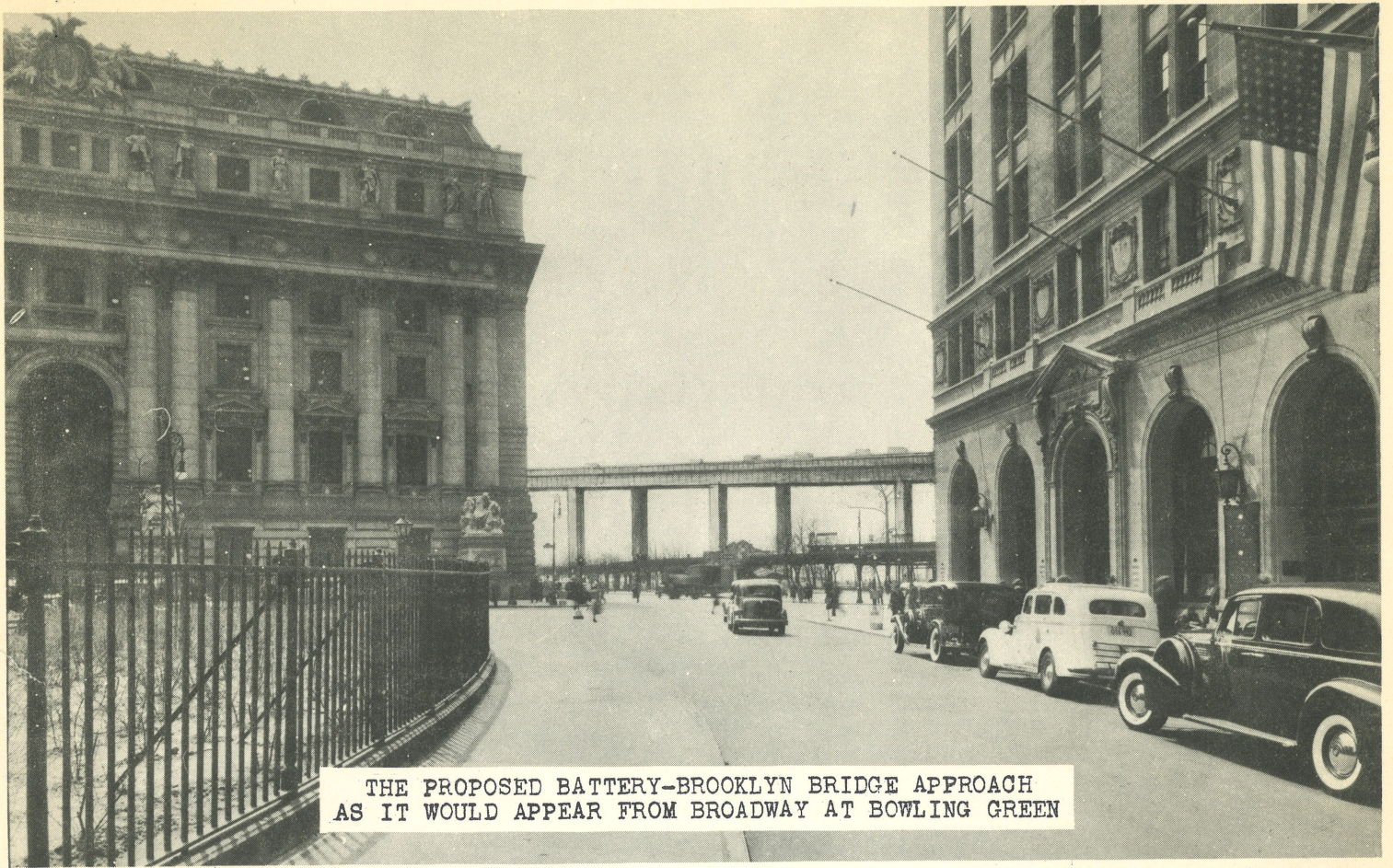


THE PROPOSED BATTERY-BROOKLYN BRIDGE APPROACH
AS IT WOULD APPEAR ACROSS BATTERY PARK



BATTERY PARK FROM A POINT ON THE AXIS OF
BROADWAY 200 FEET INSHORE

Regional Plan Association

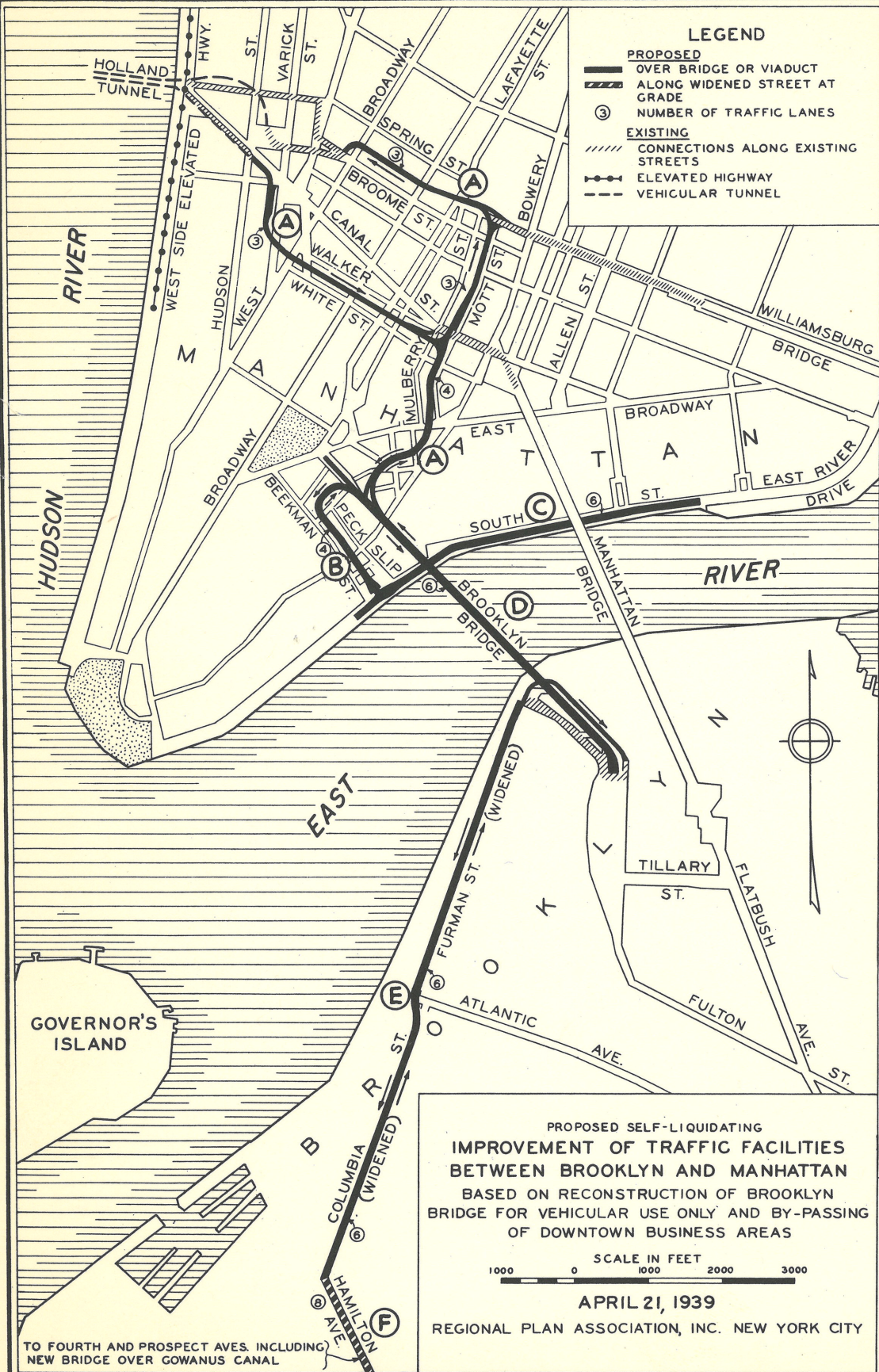


THE PROPOSED BATTERY-BROOKLYN BRIDGE APPROACH
AS IT WOULD APPEAR FROM BROADWAY AT BOWLING GREEN



LOOKING SOUTH ON BROADWAY FROM A POINT
OPPOSITE BOWLING GREEN

AN ALTERNATIVE TO A BATTERY PARK — BROOKLYN BRIDGE



PRELIMINARY ESTIMATES OF COSTS

A	
TOLL	{ PASSENGER CARS 10¢ TRUCKS (MAXIMUM) 25¢
EXPRESS HIGHWAYS ON VIADUCTS WITHIN BLOCKS & SERVING THREE EAST RIVER BRIDGES	
\$15,250,000	
B	
FREE	{ PASSENGER CARS TRUCKS
EXPRESS HIGHWAY ON VIADUCT TO SOUTH STREET	
\$4,000,000	
C	
FREE	PASSENGER CARS ONLY
ELEVATED HIGHWAY CONNECTION TO EAST RIVER DRIVE	
\$4,400,000	
D	
FREE	{ PASSENGER CARS TRUCKS
REBUILD BRIDGE FOR SIX MODERN TRAFFIC LANES	
\$6,000,000	
E	
TOLL	{ PASSENGER CARS 10¢ TRUCKS (MAXIMUM) 25¢
EXPRESS HIGHWAY - VIADUCT ALONG WIDENED STREETS	
\$6,500,000	
F	
FREE	{ PASSENGER CARS TRUCKS
WIDENING OF EXISTING STREET AT GRADE WITH SEPARATE ROADWAYS FOR LOCAL & THRU TRAFFIC	
\$4,000,000	
TOTAL COST \$40,150,000	

TRAFFIC DATA

PRESENT TRAFFIC

ANNUAL TRAFFIC ON MANHATTAN, BROOKLYN AND WILLIAMSBURG BRIDGES

TOTAL 59,400,000

ORIGIN & DESTINATION COUNTS SHOW 23,000,000 OF THIS TOTAL WERE TO & FROM THE WEST SIDE OF MANHATTAN—NORTH OF CANAL STREET.

POTENTIAL TRAFFIC ON IMPROVEMENTS

USING MANHATTAN APPROACHES 20,000,000

USING BROOKLYN APPROACHES (RED HOOK-BAY RIDGE SECTIONS) 3,000,000

TOTAL 23,000,000

PROPOSED SELF-LIQUIDATING
IMPROVEMENT OF TRAFFIC FACILITIES
BETWEEN BROOKLYN AND MANHATTAN
BASED ON RECONSTRUCTION OF BROOKLYN
BRIDGE FOR VEHICULAR USE ONLY AND BY-PASSING
OF DOWNTOWN BUSINESS AREAS



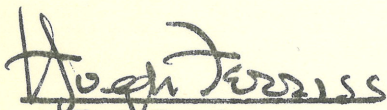
APRIL 21, 1939


REGIONAL PLAN ASSOCIATION, INC. NEW YORK CITY

TO FOURTH AND PROSPECT AVES. INCLUDING NEW BRIDGE OVER GOWANUS CANAL

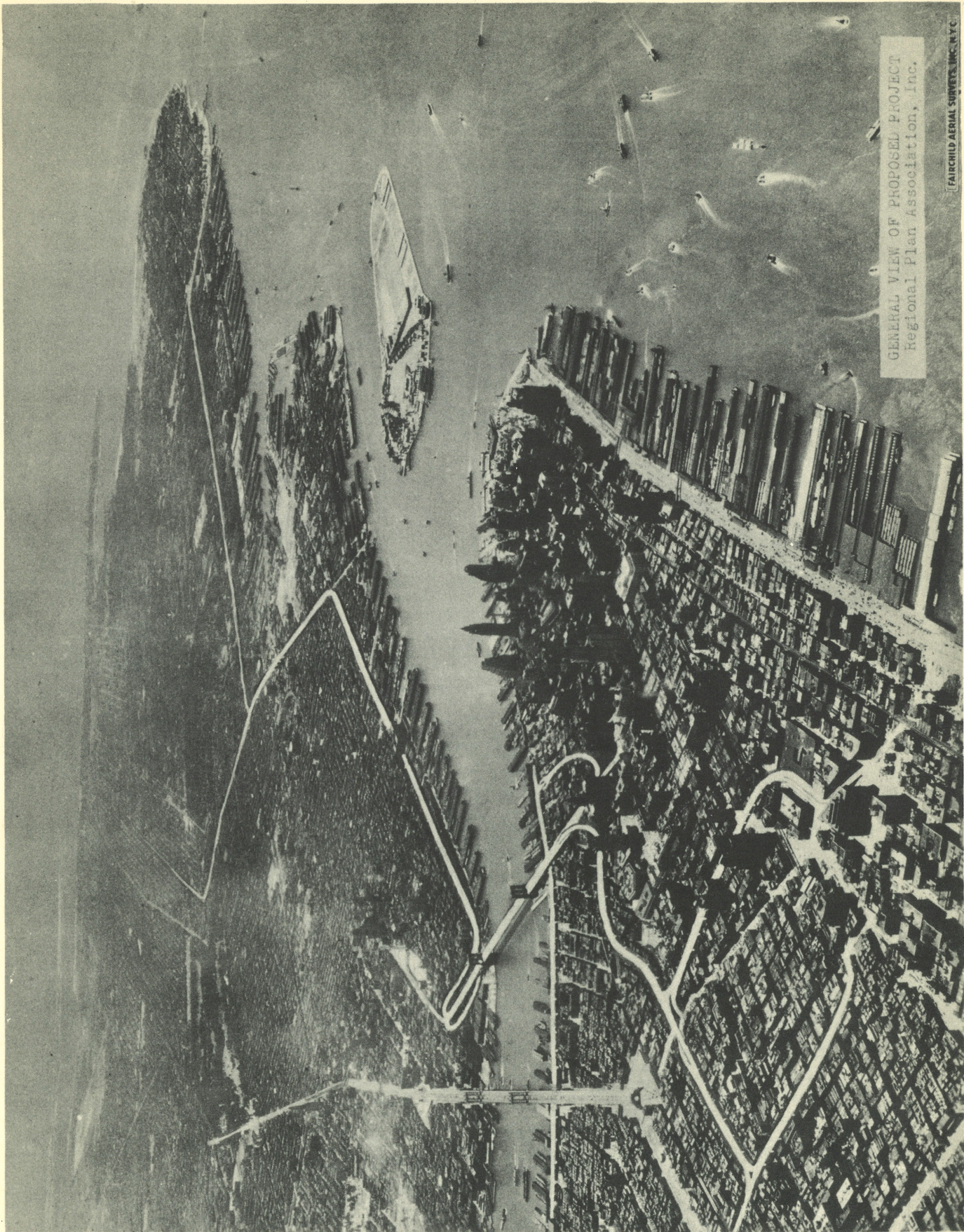
THE ACCURACY OF THE PERSPECTIVE represented in the two re-touched photographs herein, is hereby affirmed by the undersigned as to the location, height and width of the proposed bridge in accordance with Drawing #BB-114 of the Triborough Bridge Authority submitted at the hearing of the U. S. War Department held on April 25th, 1939.

As to this, and as to any other matters involved in the perspectives, the undersigned are willing to demonstrate to the Art Commission the technical steps involved in arriving at the results shown in the re-touched photographs.


Hugh Ferriss


Chester B. Price


Schell Lewis



GENERAL VIEW OF PROPOSED PROJECT
Regional Plan Association, Inc.

FAIRCHILD AERIAL SURVEYS, INC. N.Y.C.



APPROACHES IN MANHATTAN
Regional Plan Association, Inc.

FAIRCHILD AERIAL SURVEYS, INC., N.Y.C.



ELEVATED APPROACH TO THE BROOKLYN BRIDGE
ALONG COLUMBIA AND FURMAN STREETS

Regional Plan Association, Inc.