

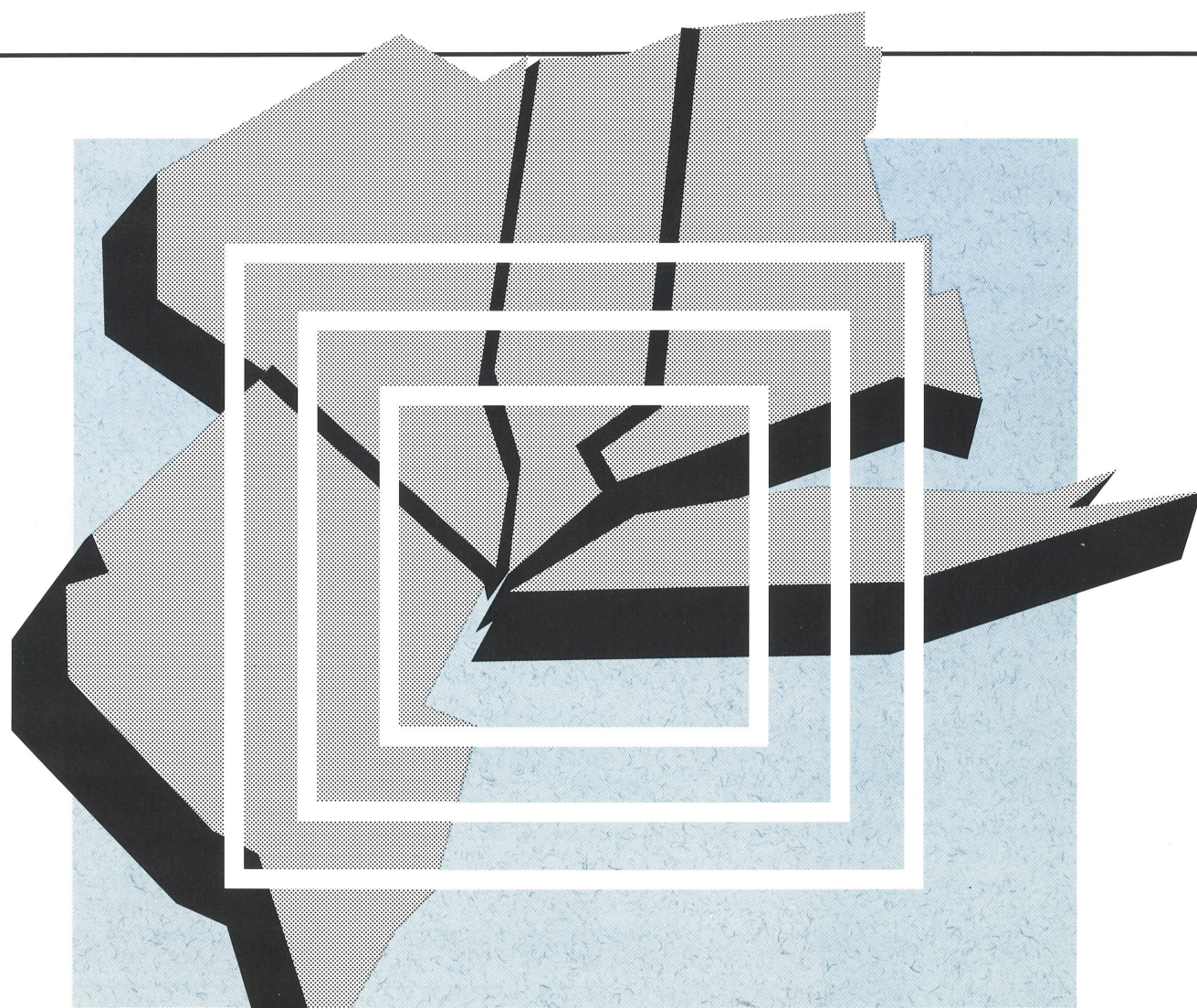
*Regional Plan Association*

---

# **THE 1991 REGIONAL ASSEMBLY: SHAPING THE REGION TOMORROW**

*Strategies to improve working and living in the Tri-State Region into the 21st Century*

---



---

*Honorary Co-Chairs: Assembly Chair: James D. Robinson, III  
Governor Mario M. Cuomo, Governor Jim Florio, Governor Lowell P. Weicker, Jr.*

---

**THE NEW YORK HILTON • Thursday, April 11, 1991 • 8:00 AM - 5:00 PM**

Innovative strategies for the New York, New Jersey and Connecticut metropolitan region:

- The Competitive Region/Economic Development
- The Accessible Region/Transportation
- The Manageable Region/Governance and Taxation
- The Beautiful Region/Design and Land Use
- The Sustainable Region/Environmental Protection
- The Equitable Region/Social Policy
- The Habitable Region/Housing

Regional Plan Association invites you to attend the 1991 Regional Assembly and to participate in the formation of a seven-part plan for charting the economic and social course of the New York/New Jersey/Connecticut metropolitan area into the 21st Century.

Since 1929, Regional Plan Association has provided

*THE 1991*  
**REGIONAL  
ASSEMBLY:**

---

**SHAPING  
THE  
REGION  
TOMORROW**

the long-term outlook and problem-solving leadership our region has needed to make it more economically competitive and livable. In the first year of the new decade, the Region has sustained deep losses in the domestic and international marketplaces. The 1991 Regional Assembly will provide an open forum led by business, civic and government leaders to discuss the public and private policy initiatives that we must implement to anchor our

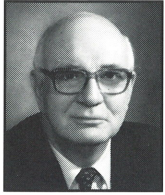
region and position it for future growth.

Join your colleagues in this interactive forum. Examine the economic, social and political choices that confront us as we live and work in the Tri-State Region. Meet with public and private decision-makers to share your views on the direction that the Region must take to maintain primacy in the national and international arenas.

**ABOUT REGIONAL  
PLAN ASSOCIATION**

Regional Plan Association seeks to improve the quality of life in the New York/New Jersey/Connecticut metropolitan region by creating a long-term plan and promoting its implementation across political boundaries.

On the basis of professional research, the Association recommends policy improvements, fosters cooperation among various government and private organizations and involves the public in considering and shaping its own future.



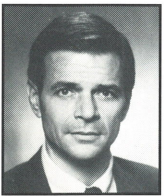
**Paul A. Volcker**, *Chairman*  
James D. Wolfensohn Inc.



**Alair A. Townsend**  
*Publisher, Crain's New York*  
*Business*



**Louis Harris**  
*Chairman and CEO, Louis*  
*Harris and Associates*



**Peter C. Goldmark, Jr.**  
*President, The Rockefeller*  
*Foundation*



**William J. Cibes, Jr.**  
*Secretary, Connecticut*  
*Office of Policy and*  
*Management*



**Ingrid W. Reed**, *Assistant*  
*Dean and Director of*  
*Administration*  
Woodrow Wilson School  
Princeton University

## THE 1991 REGIONAL ASSEMBLY

---

## FEATURED SPEAKERS



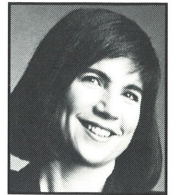
**Madeleine M. Kunin**, *Former Governor*  
State of Vermont



**David N. Dinkins**, *Mayor*  
The City of New York



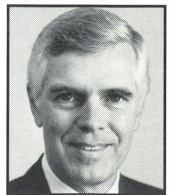
**Louis J. Gambaccini**  
*Chief Operations Officer/General Manager*  
Southeastern Pennsylvania  
Transportation Authority



**Anna Quindlen**, *Columnist*  
*The New York Times*



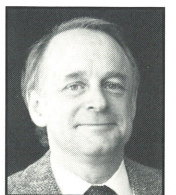
**George B. Harvey**  
*Chairman and President*  
Pitney Bowes Inc.



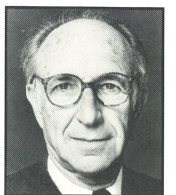
**Bruce K. MacLaury**  
*President*  
The Brookings Institution



**Judith E. Jones**  
*Director, National Center*  
*for Children in Poverty*  
Columbia University



**Norman J. Glickman**  
*Director, Center for Urban*  
*Policy Research*  
Rutgers University



**Robert L. Geddes, FAIA**  
*Henry Luce Professor of*  
*Architecture, Urbanism*  
*and History*  
New York University

**Regional Plan Association**  
1040 Avenue of the Americas  
New York, NY 10018-3797

NONPROFIT ORG.  
U.S. POSTAGE  
**PAID**  
NEW YORK, N.Y.  
Permit No. 3554

## Conference Leadership



**James D. Robinson, III**  
*Chairman, American Express Company*  
*Chairman, 1991 Regional Assembly*



**William T. Knowles**  
*Chairman and CEO*  
*National Westminster Bancorp Inc.*  
*Chairman, Regional Plan Association*



**Richard Ravitch**  
*General Partner*  
*The Blackstone Group*  
*Chairman, Council for The Region Tomorrow*



*If you receive more than one of these conference announcements, please pass it to a colleague or a friend.*

# WHY YOU SHOULD ATTEND

- Share your ideas on public policy initiatives and participate in shaping a plan for the Region with business, civic and government decision-makers.
- Identify where new economic development and business opportunities will emerge.
- Explore how land use policies and settlement patterns affect the quality of life and distinctive features of the Region.
- Learn what public and private policies are needed to compete in the global marketplace.
- Hear from experts in the fields of transportation, environmental planning, design, economics, housing and public policy about the latest research and thinking in their professions.
- Gain invaluable information to help you plan and implement your own business and professional development course of action for the 1990s and into the 21st Century.
- Understand how new public policy initiatives could affect your business and quality of life.

P R E L I M I N A R Y

## THE 1991 REGIONAL ASSEMBLY: S

T H U R S D A Y , A P

8:00 AM -  
9:00 AM

ON-SITE REGISTRATION  
CONTINENTAL BREAKFAST

### MORNING SESSION

9:00 AM -  
10:15 AM

WELCOME AND  
CONFERENCE OVERVIEW

Moderator: **Ellen V. Futter**, *President*, Barnard College

**James D. Robinson, III**, *Chairman*, American Express Company  
*Chairman*, The 1991 Regional Assembly

**The Honorable David N. Dinkins**, *Mayor*, The City of New York

**Richard Ravitch**, *General Partner*, The Blackstone Group  
*Chairman*, Council for The Region Tomorrow

**"The Region And Its Challenge"**

Keynote Speaker: **Peter C. Goldmark, Jr.**  
*President*, The Rockefeller Foundation

**"Toward The Next Regional Plan"** – *A Multi-Media Presentation*

### BREAKOUT SESSIONS

10:30 AM -  
12:00 NOON

The Region's and the nation's leading researchers, professionals, writers and government leaders will address the metropolitan area's most pressing challenges in concurrent sessions. Each group will examine challenges and explore solutions related to the following issues:

#### 1. The Competitive Region/Economic Development

Panel Chair: **Paul A. Volcker**, *Chairman*, James D. Wolfensohn Inc.

*This session will examine how global forces are shaping the Region's economic future and what policies, programs and public investments are needed to remain competitive as a world-class center.*

#### 2. The Accessible Region/Transportation

Panel Chair: **Louis J. Gambaccini**, *Chief Operations Officer/General Manager*, Southeastern Pennsylvania Transportation Authority

*This panel will dimension the Region's transportation problems and their economic and social impacts. Transportation experts will present a range of policy alternatives.*

#### 3. The Manageable Region/Governance and Taxation

Panel Chair: **Ingrid W. Reed**, *Assistant Dean and Director of Administration*, Woodrow Wilson School, Princeton University

*This group will analyze the structures and policies that are behind government costs, the problems of duplication and delivery of services, and geographic inequities. The panel will also explore policy changes that will increase the efficiency and effectiveness of government processes throughout the Region.*

#### 4. The Beautiful Region/Design and Land Use

Panel Chair: **Robert L. Geddes**, *FAIA*, *Henry Luce Professor of Architecture, Urbanism and History*, New York University

# WHO SHOULD ATTEND

This special conference is designed for people who work and reside in the New York, New Jersey and Connecticut metropolitan area.

If you are active in the following business and professional areas, plan to attend this special conference:

- Business
- Environmental Affairs
- Education
- Transportation
- Engineering
- Planning
- Public Policy Analysis
- Government
- Labor
- Civic Affairs
- Construction
- Journalism
- Agriculture
- Human Services
- Architecture
- Sales
- Housing

This session will discuss and illustrate the visual and physical implications of more compact development patterns. Design alternatives that will preserve the Region's distinctive features, enhance its attractiveness, and alleviate traffic, housing and environmental problems will be explored.

## 5. The Sustainable Region/Environmental Protection

Panel Chair: **Madeleine M. Kunin**, Former Governor, State of Vermont

This group will explore how to create communities that can maintain their economic vitality without exploiting the environment. It will include recommendations to reduce air pollution, conserve energy, manage waste disposal, protect watersheds and preserve undeveloped lands.

## 6. The Equitable Region/Social Policy

Panel Chair: **George B. Harvey**, Chairman and President, Pitney Bowes Inc.

This panel will identify successful initiatives to extend opportunities to all of the Region's citizens. Special emphasis will be placed on the role of government and the private sector in bringing minorities and immigrants into the economic mainstream.

## 7. The Habitable Region/Housing

Panel Chair: **Norman J. Glickman**, Director, Center for Urban Policy Research, Rutgers University

This session will explore the Region's housing needs and examine the social and economic effects of inadequate housing. Proposals to eliminate the obstacles to affordable housing construction will be discussed.

## LUNCHEON

### 12:00 NOON - 2:00 P.M. THE FUTURE OF METROPOLITAN AMERICA

The challenges confronting the Tri-State Region also face other metropolitan areas across the country. A panel of nationally prominent experts will offer their perspectives on the political, business and social concerns of metropolitan America in a provocative discussion led by the President of The Brookings Institution.

#### Introduction of Moderator

**William T. Knowles**, Chairman and CEO, National Westminster Bancorp Inc.; Chairman, Regional Plan Association

#### Panel Moderator

**Bruce K. MacLaury**, President, The Brookings Institution

### REGISTRATION FORM (PLEASE PRINT)

Name and Title

Affiliation

Address

City/State/Zip Code

Business Telephone

Profession

Please make check payable to Regional Plan Association and return with this form to: RPA, c/o The Conference Center, Inc., 220 East 42nd Street, Suite 412, New York, NY 10017

**Additional Registrants:** Please photocopy this registration form to register additional copies.

- I would like information about underwriting the 1991 Regional Assembly and joining the Committee, chaired by James D. Robinson, III. Please contact me.
- I would like information about Regional Plan Association's Corporate Membership Program.

# SHAPING THE REGION TOMORROW

APRIL 11, 1991

## AFTERNOON SESSION

### 2:15 PM - DISCUSSION GROUPS

3:45 PM

The concerns and ideas of conference participants will be gathered and explored in discussion groups of approximately 25 people. These interactive sessions are vital to the planning process. Regional Plan Association will use the ideas and information it gathers from these small groups in its formulation of the new Plan. Each group will be stewarded by select members of RPA's Board of Directors and Council for The Region Tomorrow.

#### Group Leaders Include:

**Max Abramovitz**, FAIA, Partner, Abramovitz-Kingsland-Schiff  
**Karen G. Arms**, Director, Stamford Campus, University of Connecticut • **Janice Ballou**, Director, Center for Public Interest Polling, Eagleton Institute of Politics, Rutgers University  
**Betty Beene**, President, United Ways of Tri-State  
**Terence H. Benbow**, Dean and Professor of Law, University of Bridgeport School of Law • **Dr. Ronald Berkman**, Acting Dean for Urban Affairs, City University of New York • **Alice Chandler**, President, State University of New York - College at New Paltz  
**David M. Childs**, Partner, Skidmore, Owings & Merrill  
**Joel Cogen**, Executive Director and General Counsel, Connecticut Conference of Municipalities • **Dr. John J. Connolly**, President & CEO, New York Medical College • **Ralph Dickerson, Jr.**, President, United Way of New York City • **Jerry Fitzgerald English, Esq.**, Partner, Kerby, Cooper, English, Danis, Popper & Garvin  
**Frank Flores**, President, Marsden Reproductions, Inc.  
**Clifford A. Goldman**, Partner, Goldman, Beale Associates  
**Stanley Hill**, Executive Director, District 37, AFSCME  
**John P. Keith**, President Emeritus, Regional Plan Association; Senior Associate, Institute of Public Administration • **Leonard Lieberman**, Chairman & CEO, Outlet Communications, Inc.; Retired Chairman & CEO, Supermarkets General Corp. • **David F. Moore**, Executive Director, New Jersey Conservation Foundation • **Herbert E. Morse**, Managing Partner, KPMG Peat Marwick • **F. W. Murray, III**, Director, New York Private Banking, Bank of America • **C. McKim Norton**, Former President, Regional Plan Association • **Joseph Papp**, Producer, New York Shakespeare Festival • **John J. Roe, III**, Partner, Law Firm of Pelletreau & Pelletreau; President, The Greater Patchogue Chamber of Commerce, Inc. • **Alan Sagner**, Alan Sagner Companies  
**James S. Schoff**, Retired President, Bloomingdale's  
**Dr. James M. Shuart**, President, Hofstra University • **Alan Siegel**, Chairman & CEO, Siegel & Gale • **Ruth L. Sims**, President, Fairfield 2000 Homes Corp. • **Robert C. Timpson**, Vice President & Area General Manager, IBM Corp. • **Charles P. Wang**, President, China Institute in America • **Arthur E. Weintraub**, President, Northern Metropolitan Hospital Association • **Gary C. Wendt**, President and CEO, GE Capital Corporation • **Frank N. Zullo, Esq.**, Partner,

# WHOM YOU WILL MEET

Each of these speakers will address specific issues critical to the development of a new Regional Plan.

**Albert F. Appleton**, Commissioner  
New York City Department  
of Environmental Protection

**Laurie Beckelman**, Chair  
New York City Landmarks  
Preservation Commission

**Stanley Brezenoff**, Executive  
Director, The Port Authority  
of New York and New Jersey

**William J. Cibes, Jr.**, Secretary  
Connecticut Office of Policy  
and Management

**Christopher J. Daggett**  
Managing Director  
William E. Simon & Sons, Inc.

**Tom Downs**, Commissioner of  
Transportation, New Jersey  
Department of Transportation

**Robert C. Einsweiler**, Director  
of Research, Lincoln Institute  
of Land Policy

**John W. Epling**, Director, New  
Jersey Office of State Planning

**Ellen V. Futter**, President  
Barnard College

**Louis J. Gambaccini**, Chief  
Operations Officer/General  
Manager, Southeastern  
Pennsylvania Transportation  
Authority

**Robert L. Geddes**, FAIA  
Henry Luce Professor of  
Architecture, Urbanism and  
History, New York University

**Norman J. Glickman**, Director  
Center for Urban Policy

**4:00 PM-5:00 PM CONFERENCE SUMMARY AND RECEPTION**

**GENERAL INFORMATION**

**REGISTRATION:** You can register for the "1991 Regional Assembly: Shaping The Region Tomorrow" in one of three ways:

**By Mail:** Complete, detach and mail the registration coupon to: "Shaping The Region Tomorrow," **Regional Plan Association**, c/o The Conference Center, Inc., 220 East 42nd Street, Suite 412, New York, NY 10017.

**By Telephone:** Call (212) 818-9400.

**By Facsimile:** Complete, detach and fax the registration coupon to (212) 983-6709.

**FEES**

**Registration On or Before March 22, 1991**

The fee for registration for the one-day Assembly:

\$95 for RPA members

\$145 for non-members of RPA (includes one-year membership)

**Registration After March 22, 1991**

The fee for registration for the one-day Assembly:

\$115 for RPA members

\$165 for non-members of RPA (includes one-year membership)

*A limited number of reduced rate scholarships will be made available to individuals from non-profit organizations, students and others with special needs. Please apply by submitting a request letter by mail or fax before March 22, 1991 to: RPA, c/o The Conference Center, 220 East 42nd Street, New York, NY 10017, facsimile: (212) 983-6709.*

**Refunds:** Written notice (by mail, fax or telegram) is required for all cancellations. Cancellations must be postmarked 10 days before the start of the conference. All refunds are subject to a 25% cancellation fee. Substitute attendees may be arranged at any time at no cost.

**WHAT'S INCLUDED**

Continental breakfast, luncheon and closing reception are included in the fee. Each participant will receive a comprehensive packet of conference materials at no additional cost.

**LOCATION**

The New York Hilton Hotel, 1335 Avenue of the Americas at 53rd Street. Hotel accommodations may be arranged by calling Carlo Karim at (212) 586-7000. The Hilton is accessible to the handicapped.

For further information please contact Andrew Rowan at The Conference Center, Inc., (212) 818-9400.

**REGISTRATION FEES** (Please choose the appropriate category)

	On or Before 3/22/91	After 3/22/91
RPA Members	<input type="checkbox"/> \$95	<input type="checkbox"/> \$115
Non-Members (includes one-year RPA membership)	<input type="checkbox"/> \$145	<input type="checkbox"/> \$165

Please register me for **one** of the following breakout sessions. I have indicated my first, second and third session choices:

- 1. The Competitive Region/Economic Development
- 2. The Accessible Region/Transportation
- 3. The Manageable Region/Governance and Taxation
- 4. The Beautiful Region/Design and Land Use
- 5. The Sustainable Region/Environmental Protection
- 6. The Equitable Region/Social Policy
- 7. The Habitable Region/Housing

- Center for Urban Policy Research, Rutgers University
- Peter C. Goldmark, Jr.**  
*President, The Rockefeller Foundation*
- Paul S. Grogan, President**  
Local Initiatives Support Corporation
- Louis Harris, Chairman and CEO**  
Louis Harris and Associates
- George B. Harvey, Chairman and President,** Pitney Bowes Inc.
- Tony Hiss, Author**  
*The Experience of Place ; Staff Writer, The New Yorker*
- Judith E. Jones, Director**  
National Center for Children in Poverty, Columbia University
- Madeleine M. Kunin, Former Governor,** State of Vermont
- M. David Lee, AIA, Partner**  
Stull and Lee, Incorporated Architects and Planners
- Representative Moira K. Lyons**  
Co-Chair, Transportation Committee, Connecticut General Assembly
- Bruce K. MacLaury, President**  
The Brookings Institution
- Joseph J. McGee, Commissioner of Economic Development**  
State of Connecticut
- Neal Peirce, Columnist**  
National Journal
- Anna Quindlen, Columnist**  
The New York Times
- Paul D. Raskin, President**  
Tellus Institute
- Ingrid W. Reed, Assistant Dean and Director of Administration**  
Woodrow Wilson School Princeton University
- Alair A. Townsend, Publisher**  
Crain's New York Business
- Paul A. Volcker, Chairman**  
James D. Wolfensohn Inc.
- Charles P. Wang, President**  
China Institute in America
- Bruce L. Warwick, Chairman**  
Warwick Associates Inc.
- Franklin E. White, Commissioner of Transportation,** New York State Department of Transportation
- Kathryn Wylde, President**  
New York City Housing Partnership