

Drivelmage XML

Image and Backup logical Drives and Partitions

Testimonials & Reviews

See what our customers and the press have to say

View Products

View all our products

Buy Now!

Order our products online now!

How-to-Guides

Step-by-step solutions for common problems.

Documentation

View the software help files and other resources.

Contact Us

For Technical Support and all other inquiries.

Languages






Last updated: January 10, 2010

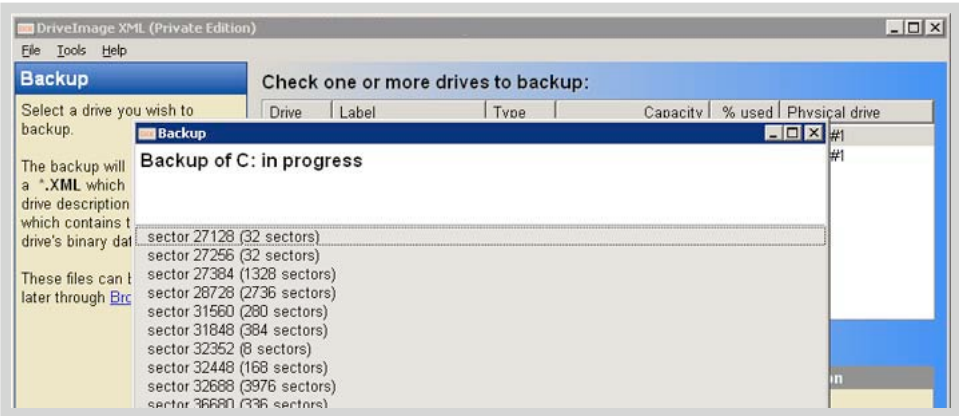
# Drivelmage XML V2.13

Image and Backup logical Drives and Partitions

**File Size:**1.78 MB  
**Price:** Private Edition Free - Commercial Edition - [Buy Now](#)  
 **System Requirements:** Pentium Processor - 256 MB RAM  
Windows XP, 2003, Vista, or Windows 7

Free Download

Drivelmage XML - V2.13 for Windows  
English (1.78MB)



## Product Highlights

- Backup** logical drives and partitions to image files
  - Browse** images, view and extract files
  - Restore** images to the same or a different drive
- Copy** directly from drive to drive
  - Schedule automatic backups
  - Run Drivelmage from [WinPE boot CD-ROM](#)

## Image and Backup logical Drives and Partitions

Drivelmage XML is an easy to use and reliable program for imaging and backing up partitions and logical drives.

Image creation uses Microsoft's Volume Shadow Services (VSS), allowing you to create safe "hot images" even from drives currently in use. Images are stored in XML files, allowing you to process them with 3rd party tools. Never again be stuck with a useless backup! Restore images to drives without having to reboot. Drivelmage XML is now faster than ever, offering two different compression levels.

Drivelmage XML runs under Windows XP, Windows Server 2003, Vista and Windows 7 only. The program will backup, image and restore drives formatted with FAT 12, 16, 32 and NTFS.

### Two Versions of Drivelmage XML are available:

**Private Edition:** Private home users are allowed to use the Private Edition of Drivelmage XML without charge. You are allowed to install Drivelmage XML on your home PC. You must not use Drivelmage XML commercially. No support is provided for the Private Edition.

**Commercial Edition:** If you are a business or organization or use Drivelmage XML commercially, you need to purchase the Commercial Edition. The Commercial Edition is available with [5, 10, 20, 50 and 100-user licenses](#). The first screen of the Commercial Edition can be [customized](#) to show your name, address, support numbers, etc. The buyer of the

Commercial Edition is allowed to install the denominated number of copies of DriveImage XML on computers in its own organization or on customer's computers. Support is provided to the buyer of the Commercial Edition for the period of one year and for the number of support incidences specified at the time of purchase. You are entitled to free updates for one year from the time of purchase. [Buy the Commercial Edition...](#)

**[Read the DriveImage XML FAQ ➡](#)**