

Acer BIOS Flash SOP

(For Non-ME uEFI BIOS)

Document: SOP

Issue Date: 08/20/2012

Document Revision: v1.41

	APPROVED	CHECKED	PREPARED
BY	Vincent Lu	Seabird Fang	Apple Xing
DATE	08/20/2012	08/20/2012	08/20/2012

This document contains proprietary and confidential information of Foxconn. All rights and titles hereto remain with Foxconn. The recipient shall keep this document in strict confidence and shall use this document in the manner and solely for purposes expressly agreed to by Foxconn. The recipient shall not disclose or allow access to this document, in whole or in part, by third parties, nor use it for the benefit of the recipient or third parties. The recipient shall not change this document in form and substance by any means, including without limitation, decompile, reproduce, revise, and amend.

[illegible]

目录

Flash System uEFI BIOS SOP for DOS:..... 4

Flash System uEFI BIOS SOP for Windows:..... 7

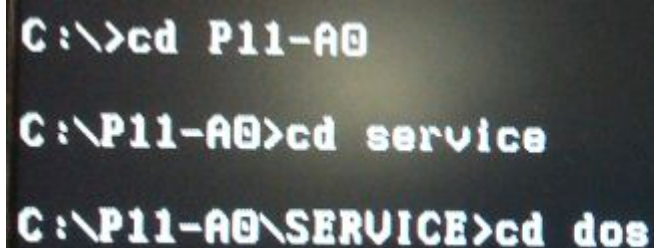
Flash System uEFI BIOS SOP for UEFI Shell(64bit):..... 10

A: For Built-in EFI shell:..... 10

B: For Non Built-in EFI shell:..... 14

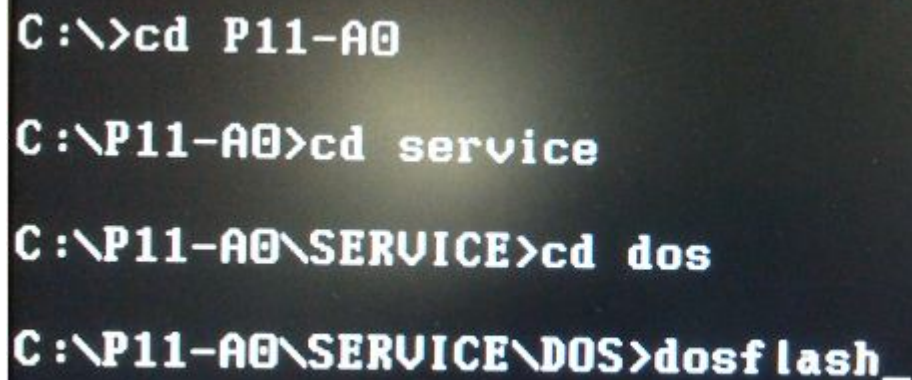
Flash System uEFI BIOS SOP for DOS:

1. Copy BIOS folder to USB Disk. [You can rename the BIOS folder. For example: rename to P11-A0.](#)
2. Boot system to DOS mode.
3. Enter BIOS folder.
4. Enter "Service\DOS" folder.



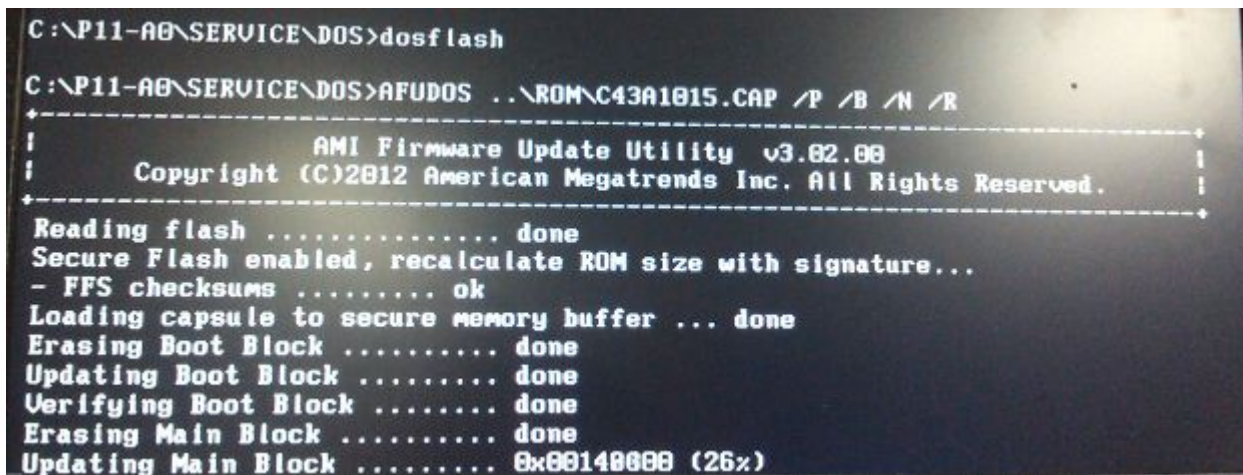
```
C:\>cd P11-A0  
C:\P11-A0>cd service  
C:\P11-A0\SERVICE>cd dos
```

5. Execute "dosflash.bat" file.



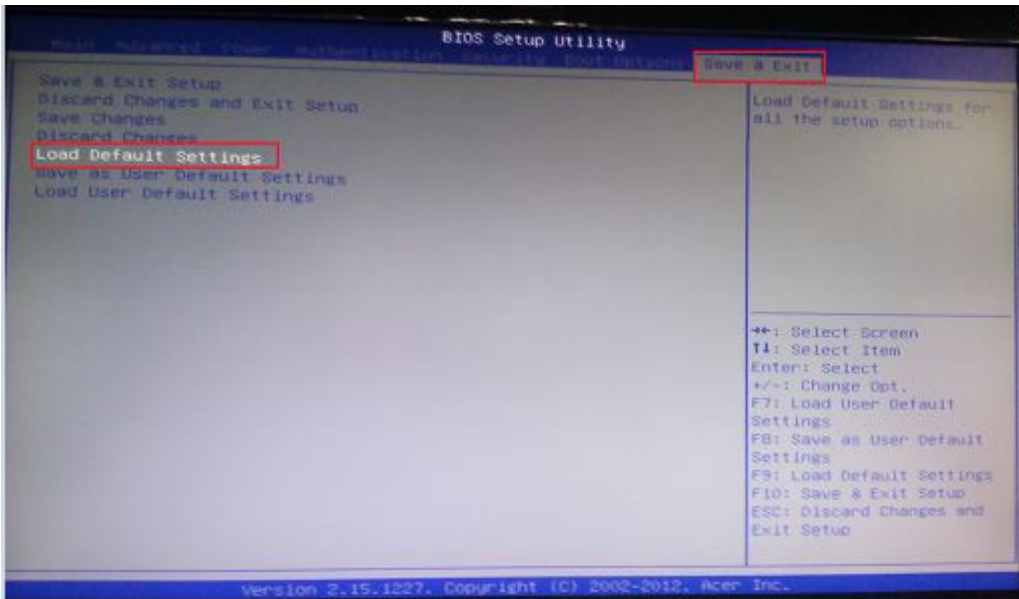
```
C:\>cd P11-A0  
C:\P11-A0>cd service  
C:\P11-A0\SERVICE>cd dos  
C:\P11-A0\SERVICE\DOS>dosflash_
```

6. Process to flash BIOS ([Don't reset](#))

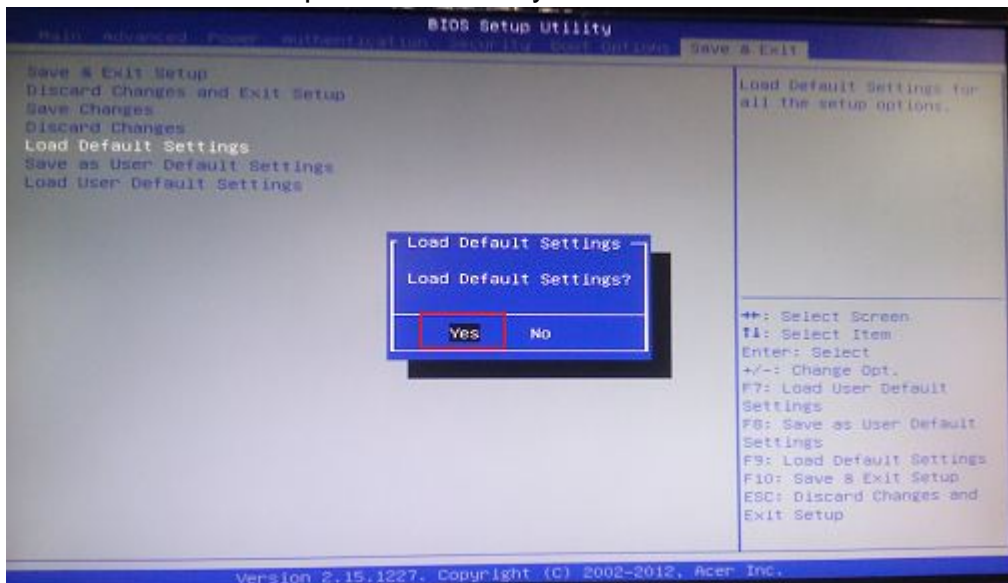


```
C:\P11-A0\SERVICE\DOS>dosflash  
C:\P11-A0\SERVICE\DOS>AFUDOS ..\ROM\C43A1015.CAP /P /B /N /R  
+-----+  
|          AMI Firmware Update Utility  v3.02.00          |  
|  Copyright (C)2012 American Megatrends Inc. All Rights Reserved.  |  
+-----+  
Reading flash ..... done  
Secure Flash enabled, recalculate ROM size with signature...  
- FFS checksums ..... ok  
Loading capsule to secure memory buffer ... done  
Erasing Boot Block ..... done  
Updating Boot Block ..... done  
Verifying Boot Block ..... done  
Erasing Main Block ..... done  
Updating Main Block ..... 0x00140000 (26x)
```

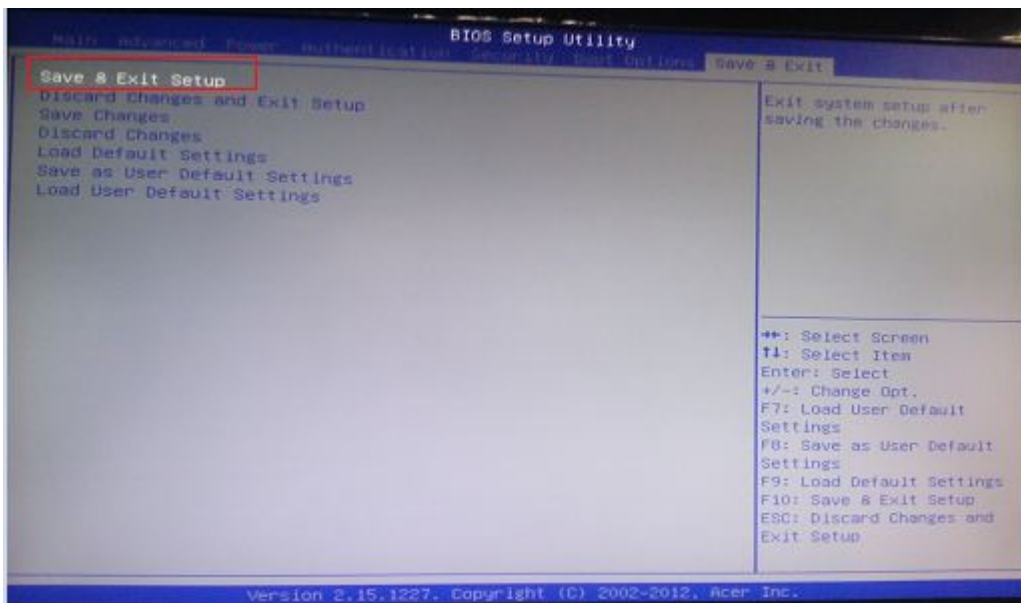
7. When finished BIOS update, please press any key to reboot the system.
8. Press “Del” to enter BIOS setup.
9. In Exit page, select “Load Default Settings” and press “Enter” key.



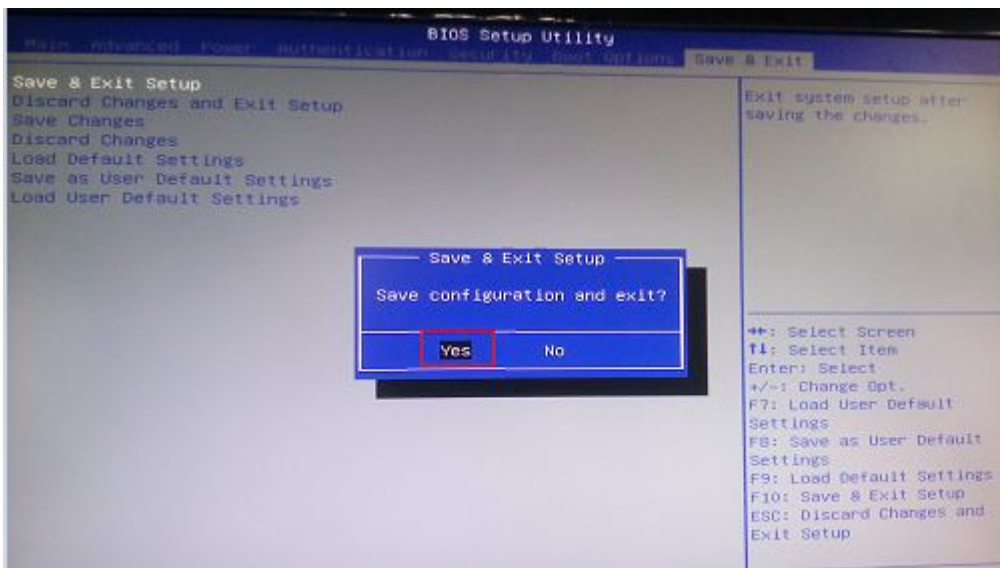
10. Select “Yes” and press “Enter” key.



11. Select “Save & Exit Setup” and press “Enter” key.




12. Select "Yes" and press "Enter" key.













13. Flash BIOS is finished.

Flash System uEFI BIOS SOP for Windows:

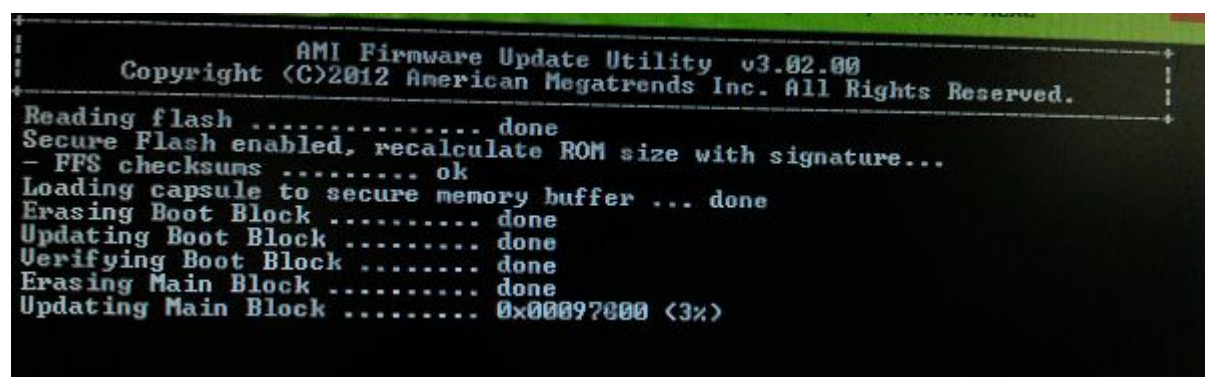
1. Open “WIN\win64” folder .

Name	Date modified	Type	Size
 win64	10/21/2013 12:58 ...	File folder	

2. Please double click “Winflash.bat”.

Name	Date modified	Type	Size
 AFUWINGUI	7/17/2012 11:43 AM	Application	665 KB
 AFUWINGUI	5/23/2011 1:37 AM	Text Document	6 KB
 afuwinx64	7/17/2012 11:43 AM	Application	330 KB
 AFUWINx64	7/6/2012 3:08 PM	Text Document	3 KB
 AMI_Aptio_AFU_User_Guide_NDA	7/6/2012 3:10 PM	PDF File	317 KB
 amifldr32.sys	4/20/2012 11:16 AM	System file	13 KB
 amifldr64.sys	4/20/2012 11:16 AM	System file	16 KB
 readme	7/6/2012 3:08 PM	Text Document	4 KB
 readme_afuwin	1/6/2012 5:12 PM	Text Document	1 KB
 Winflash	8/22/2012 8:45 PM	Windows Batch File	1 KB

3. Process to flash BIOS (Don't reset).



```

AMI Firmware Update Utility v3.02.00
Copyright (C)2012 American Megatrends Inc. All Rights Reserved.

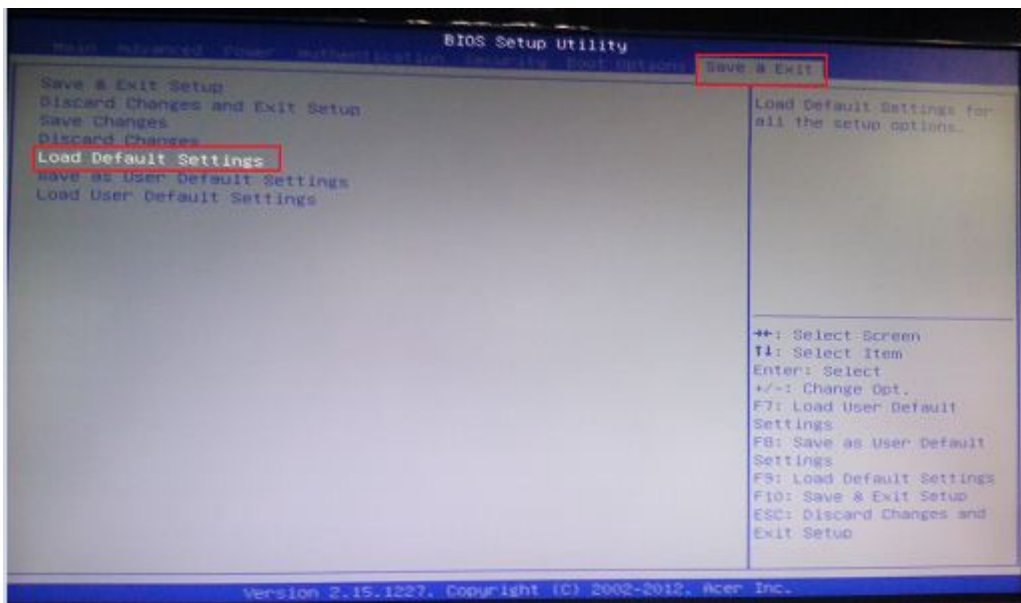
Reading flash ..... done
Secure Flash enabled, recalculate ROM size with signature...
- FFS checksums ..... ok
Loading capsule to secure memory buffer ... done
Erasing Boot Block ..... done
Updating Boot Block ..... done
Verifying Boot Block ..... done
Erasing Main Block ..... done
Updating Main Block ..... 0x00097000 (3%)
  
```

4.

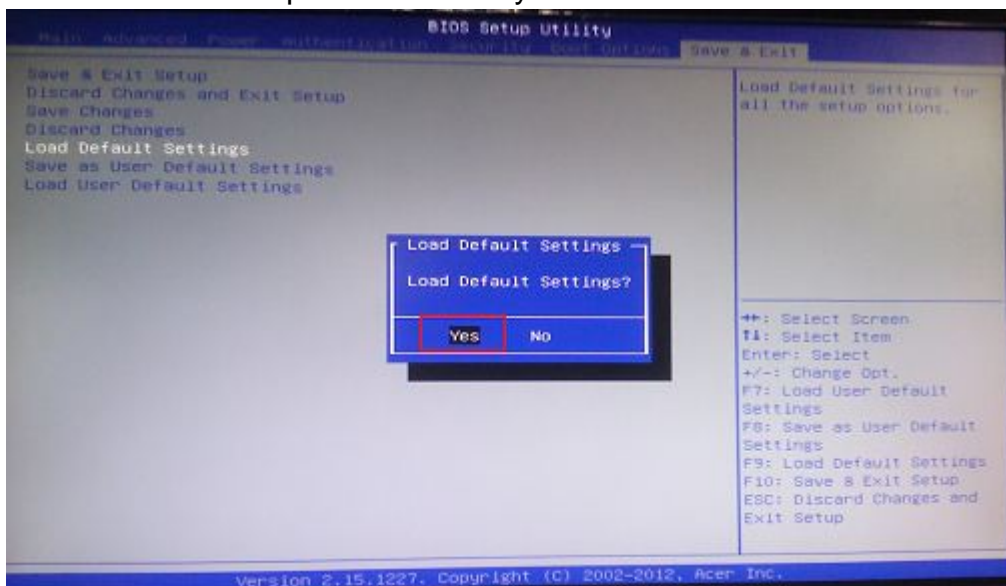
When finished BIOS update, please press any key to reboot the system.

5. Press “Del” to enter BIOS setup.

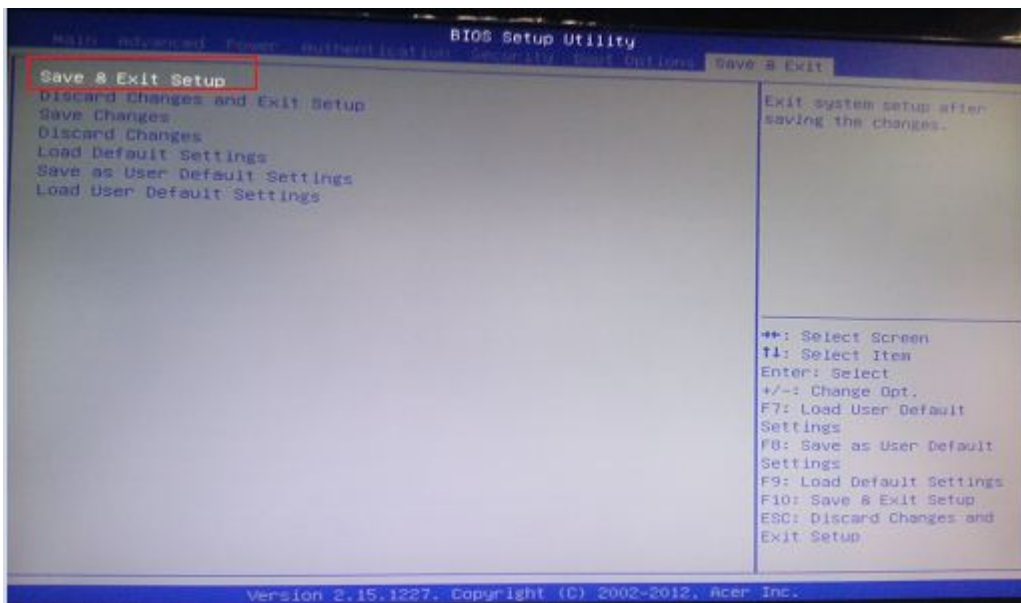
6. In Exit page, select “Load Default Settings” and press “Enter” key.



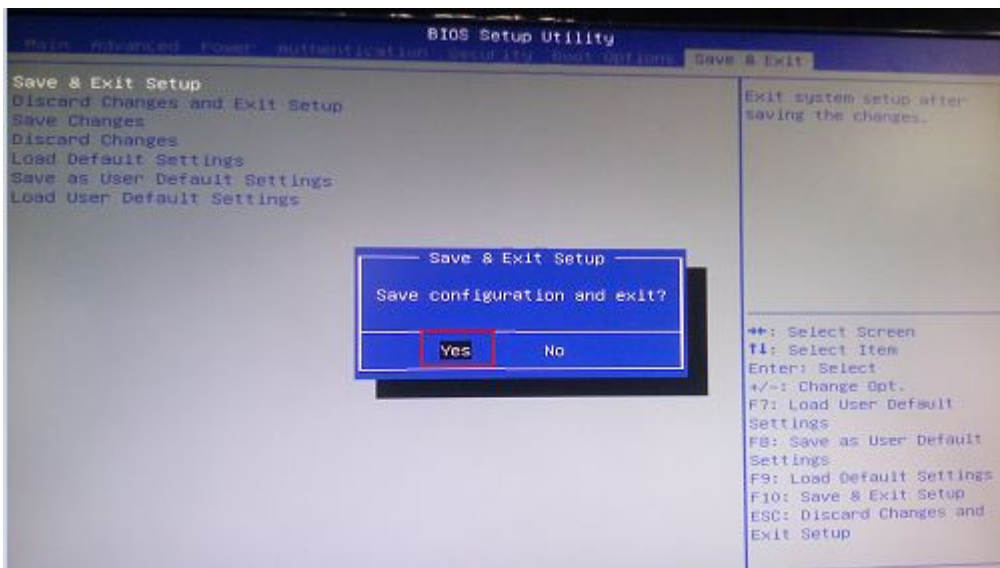
7. Select "Yes" and press "Enter" key.



8. Select "Save & Exit Setup" and press "Enter" key.



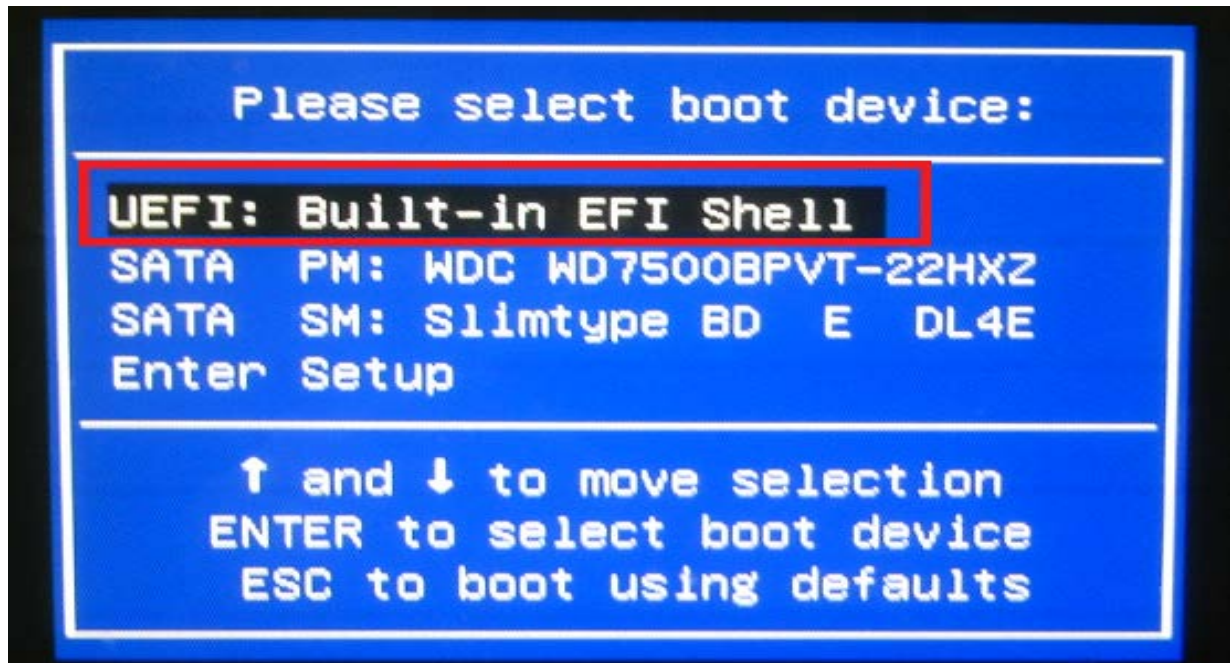
9. Select "Yes" and press "Enter" key.



10. Flash BIOS is finished.

Flash System uEFI BIOS SOP for UEFI Shell(64bit):**A: For Built-in EFI shell:**

1. Copy BIOS folder to USB Disk. You can rename the BIOS folder. For example: rename to P11-A0.
2. Plug in the USB disk included flash tool and UEFI firmware to the system ,power on and press "F12" hotkey to invoke Boot Menu ,select to boot from UEFI Shell.Refer to below picture.



3. Select the U-Disk file-system(eg:fs5) under uEFI Shell.
4. Enter the BIOS folder.
5. Enter "Service\EFI" folder.

```
Shell> fs5:
fs5:\> cd P11-A0
fs5:\P11-A0> cd service
fs5:\P11-A0\Service> cd efi
```

6. Execute "efiflash.nsh" file.

```
Shell> fs5:
fs5:\> cd P11-A0
fs5:\P11-A0> cd service
fs5:\P11-A0\Service> cd efi
fs5:\P11-A0\Service\EFI> efiflash_
```

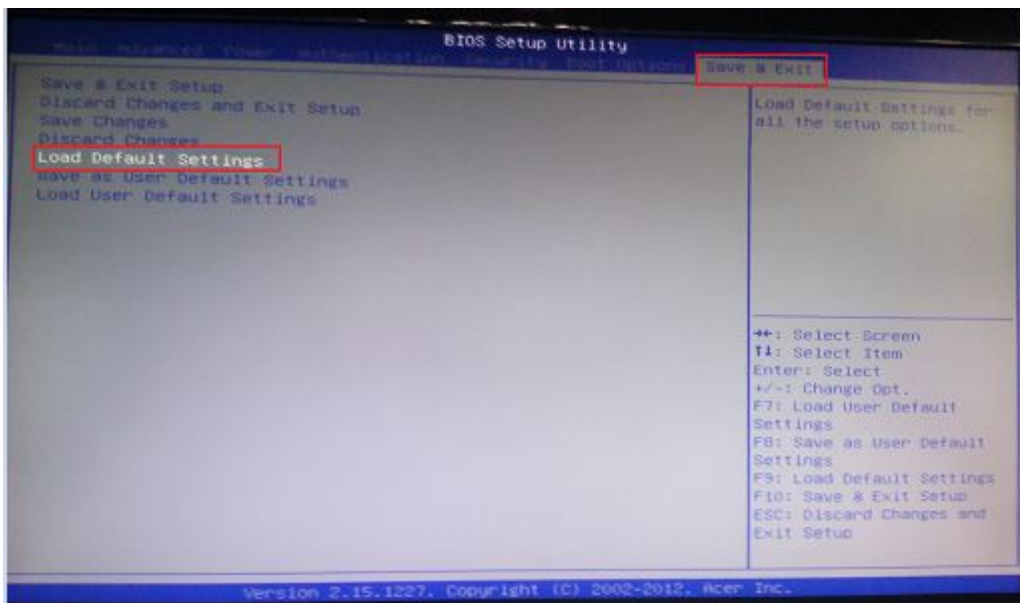
7. Flashing process([Don't reset or turn off the power](#)).Refer to below picture.

```
fs5:\P11-A0\Service\EFI> efiflash
efiflash> AfuEfi64 ..\ROM\C43A1015.CAP /P /B /N /R
+-----+
|               AMI Firmware Update Utility  v3.02.00               |
|      Copyright (C)2012 American Megatrends Inc. All Rights Reserved.      |
+-----+
Reading flash ..... done
Secure Flash enabled, recalculate ROM size with signature...
- FFS checksums ..... ok
Loading capsule to secure memory buffer ... done
Erasing Boot Block ..... done
Updating Boot Block ..... done
Verifying Boot Block ..... done
Erasing Main Block ..... done
Updating Main Block ..... 0x0020B000 (52%)
```

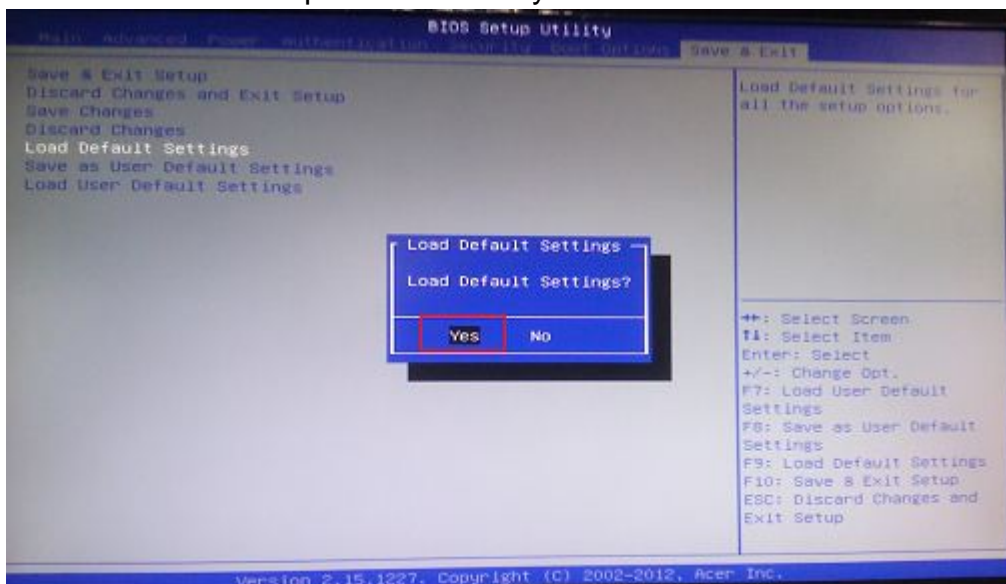
8. When finished BIOS update, please press any key to reboot the system.

9. Press "**Del**" to enter BIOS setup.

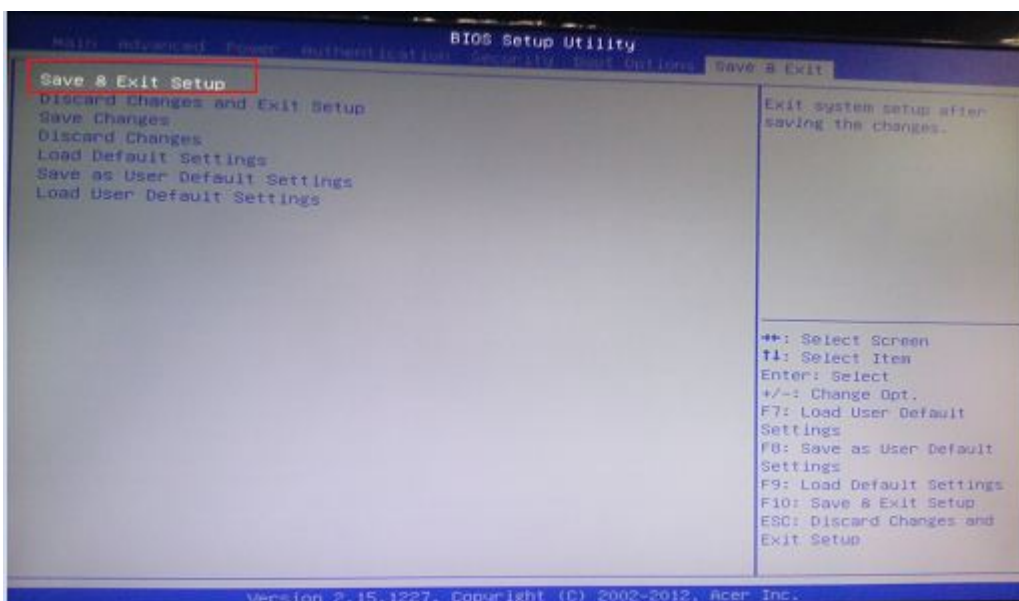
10. In Exit page, select "Load Default Settings" and press "Enter" key.



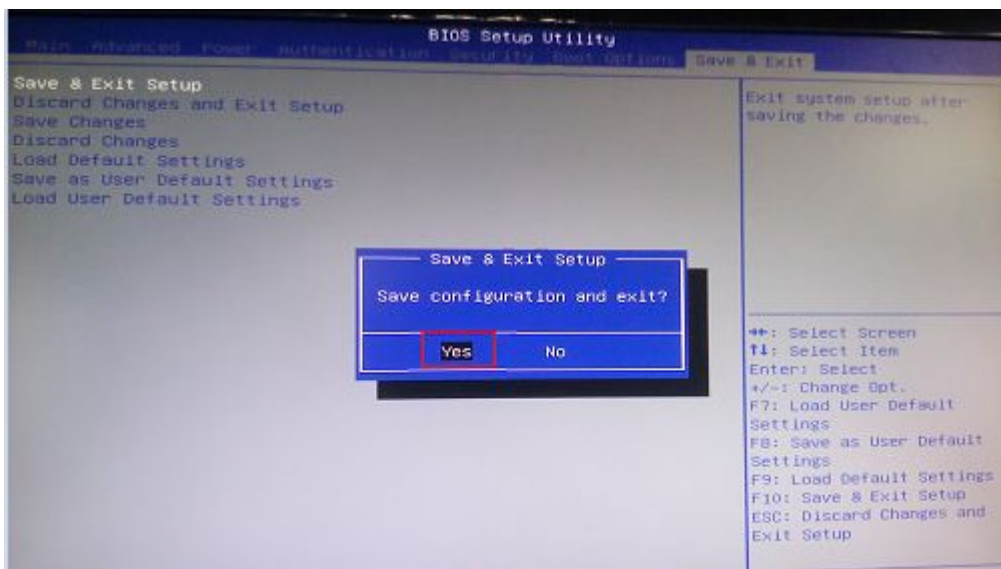
11. Select "Yes" and press "Enter" key.



12. Select "Save & Exit Setup" and press "Enter" key.



13. Select “Yes” and press “Enter” key.

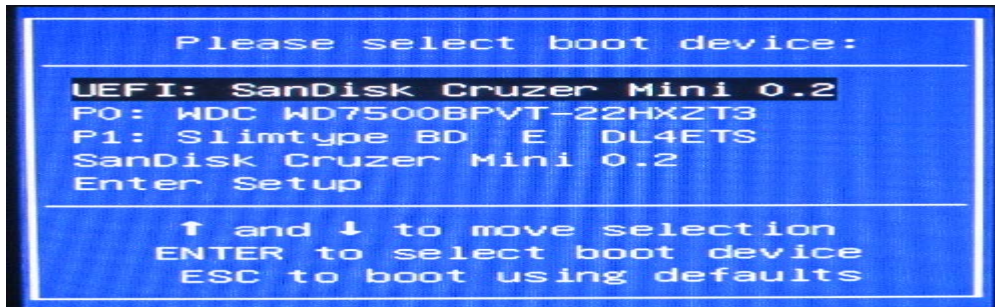


14. UEFI Firmware update is complete.

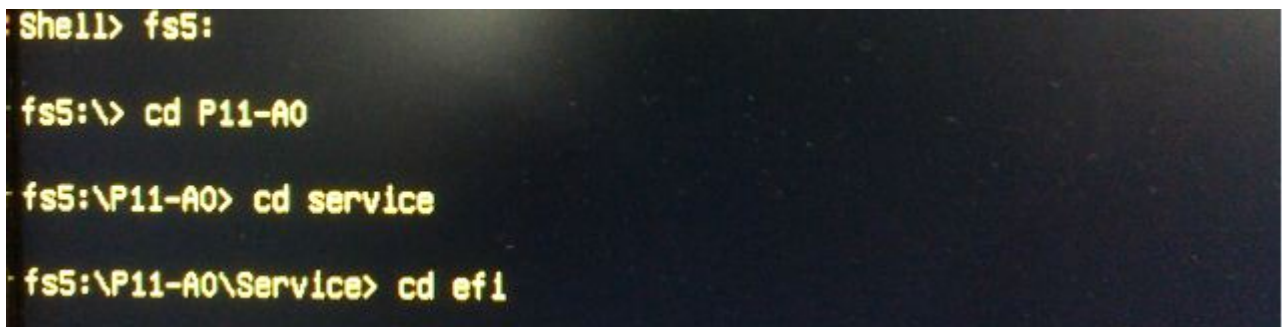
B: For Non Built-in EFI shell:

1. Make a bootable EFI USB disk
2. Copy BIOS folder to USB Disk. [You can rename the BIOS folder. For example: rename to P11-A0.](#)
3. Plug in the USB disk included flash tool and UEFI firmware to the system ,power on and press "F12" hotkey to invoke Boot Menu ,select to boot from UEFI Shell.

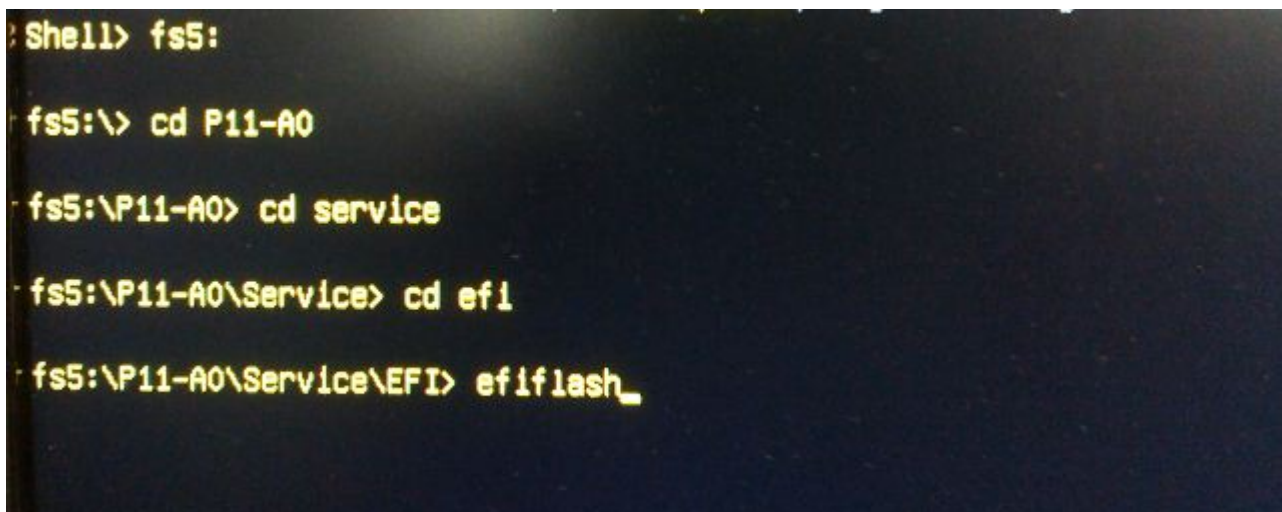
Refer to below picture.



3. Select the U-Disk file-system(eg:fs5) under uEFI Shell.
4. Enter the BIOS folder.
5. Enter "Service\efi" folder.



6. Execute "efiflash.nsh" file.



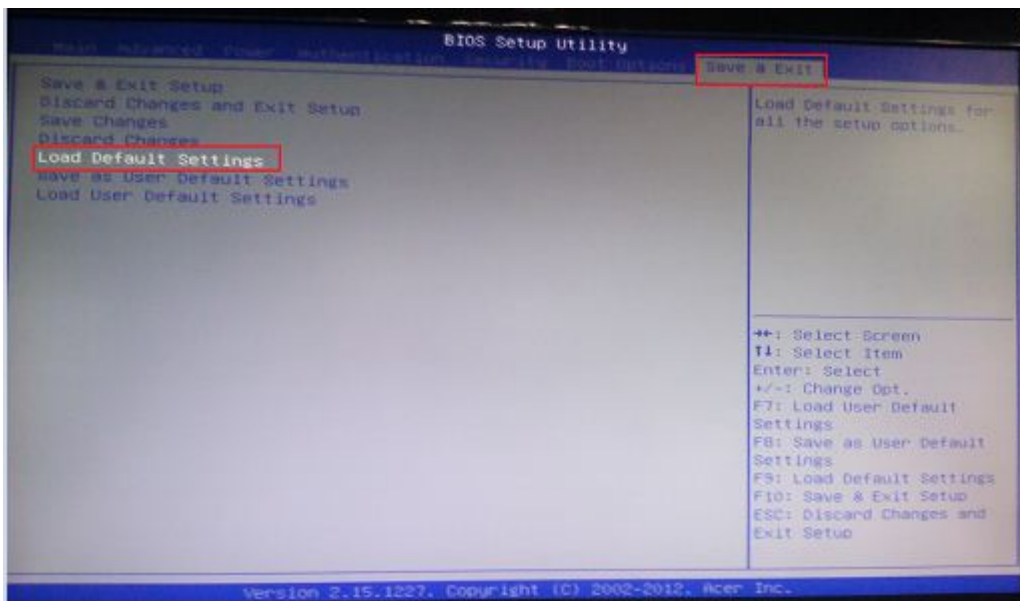
7. Flashing process([Don't reset or turn off the power](#)).Refer to below picture.


```

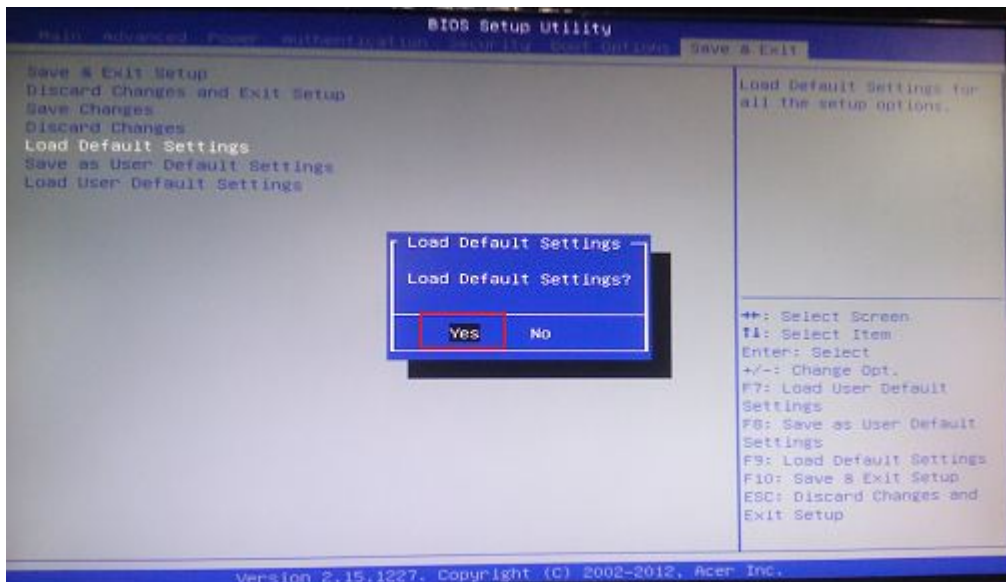
fs5:\P11-A0\Service\EFI> efiflash
efiflash> AfuEfi64 ..\ROM\C49A1015.CAP /P /B /N /R
+-----+
|               AMI Firmware Update Utility  v3.02.00               |
|      Copyright (C)2012 American Megatrends Inc. All Rights Reserved.      |
+-----+
Reading flash ..... done
Secure Flash enabled, recalculate ROM size with signature...
- FFS checksums ..... ok
Loading capsule to secure memory buffer ... done
Erasing Boot Block ..... done
Updating Boot Block ..... done
Verifying Boot Block ..... done
Erasing Main Block ..... done
Updating Main Block ..... 0x0020B000 (52%)

```

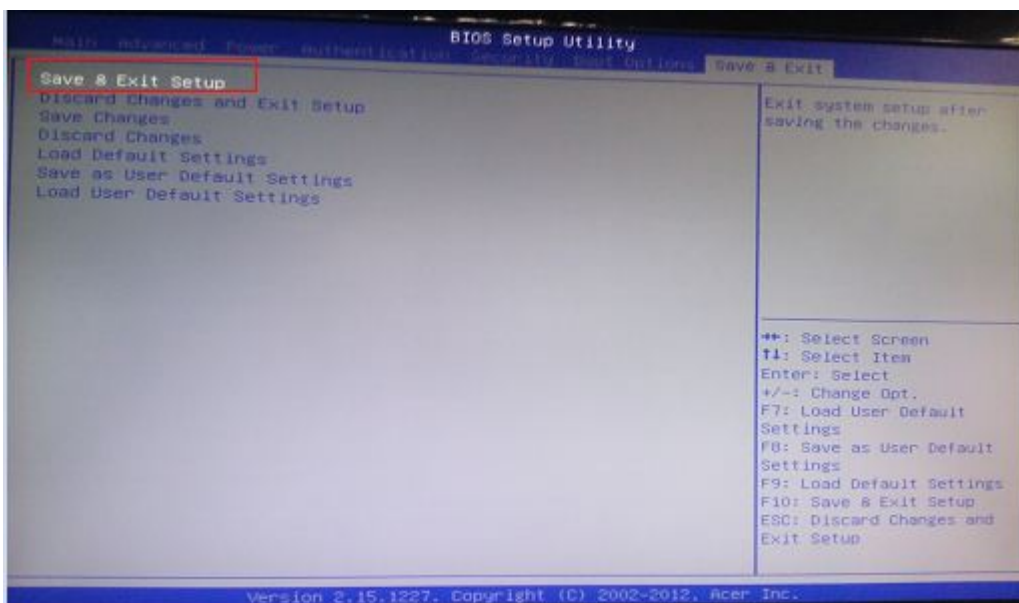
8. When finished BIOS update, please
9. Press “Del” to enter BIOS setup.
10. In Exit page, select “Load Default Settings” and press “Enter” key.



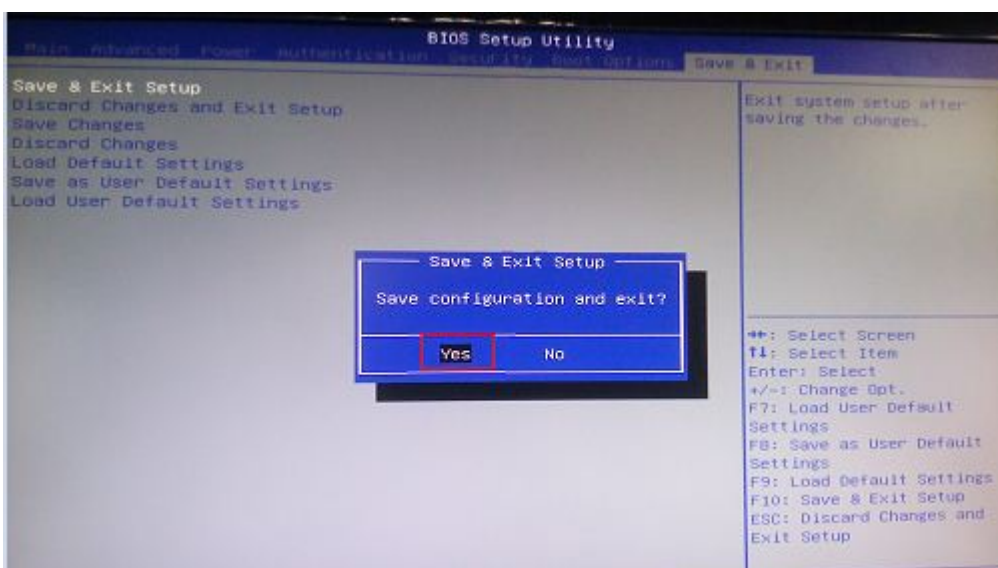
11. Select “Yes” and press “Enter” key.



12. Select "Save & Exit Setup" and press "Enter" key.



13. Select "Yes" and press "Enter" key.



14. UEFI Firmware update is complete.