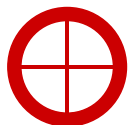


DIGITAL FORENSICS TOOLS BY DIGITAL FORENSICS EXPERTS

MAKING MAXIMUM EXPLOITATION OF ELECTRONIC EVIDENCE MORE ACCESSIBLE



Registry Recon

Unlock the potential of huge volumes of Windows® Registry data and see how Registries changed over time.



Hibernation Recon

Reconstruct active memory and extract multiple types of slack from Windows hibernation files.



Arsenal Image Mounter

Mount the contents of disk images as "real" disks on Windows with unique digital forensics functionality.

"Hibernation Recon has become DoD's must-have tool for extracting digital artifacts from Windows hibernation files. Not only does Hibernation Recon properly reconstruct active memory for all versions of Windows when other tools fail, it is the only tool that extracts various types of "slack space", which has yielded critical forensic artifacts for DoD's foreign intelligence mission that could not have been obtained any other way."

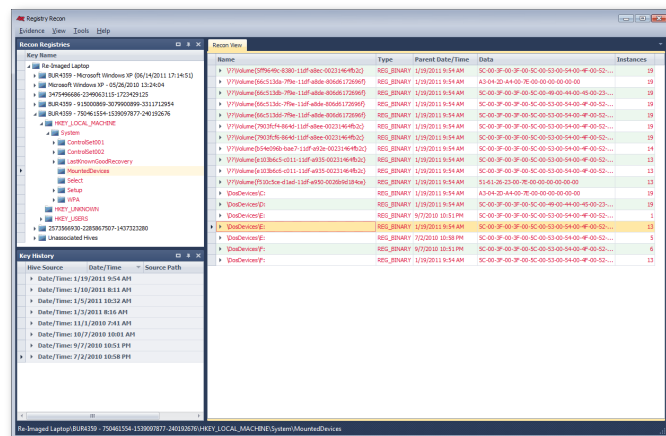
-- United States Department of Defense



Registry Recon

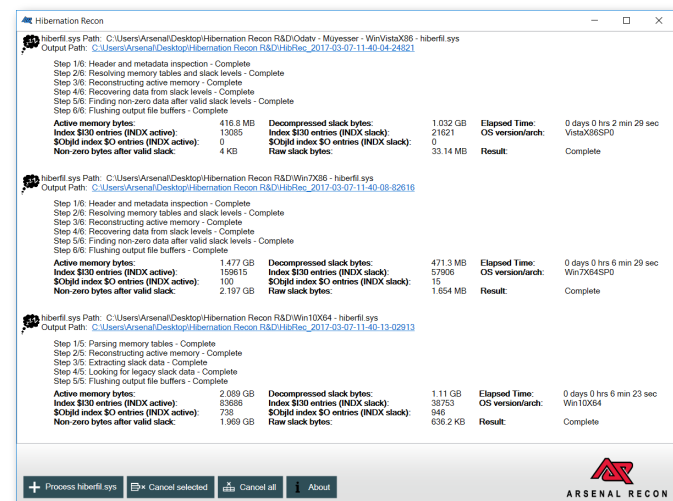
Registry Recon is not just another Registry parser. We developed powerful new methods to parse Registry data so that Registries which

have existed on a Windows system over time can be rebuilt, providing unique insight into how Registry data has changed over time. Registry Recon provides access to an enormous volume of Registry data which has been effectively deleted, whether that deletion occurred due to benign system activity, malfeasance by a user, or even re-imaging by IT personnel.

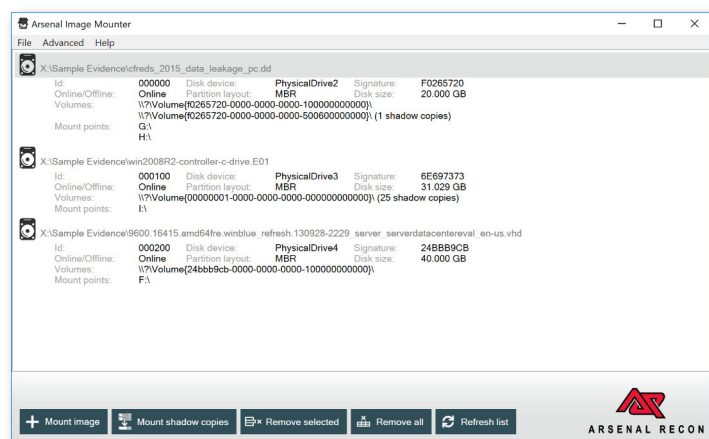


Hibernation Recon

Hibernation Recon not only supports active memory reconstruction from Windows XP, Vista, 7, 8/8.1, and 10 hibernation files, but also extracts massive volumes of information from the multiple types (and levels) of slack space that often exist within them. Additional features of Hibernation Recon include the automatic recovery of valuable NTFS metadata and parallel processing of multiple hibernation files.



Arsenal Image Mounter



Arsenal Image Mounter mounts the contents of disk images as complete disks in Windows. Arsenal Image Mounter includes a virtual SCSI adapter (via a unique Storport miniport driver) which allows users to benefit from disk-specific features in Windows like integration with Disk Manager, access to Volume Shadow Copies, and more. As far as Windows is concerned, the contents of disk images mounted by Arsenal Image Mounter are “real” SCSI disks.

Purchase Information

Get the entire collection of Arsenal tools with an affordable monthly subscription and:

- Enable the professional functionality of all our tools with a single license
- Lock-in a low monthly price well into the future with increasing discounts
- Always access the latest versions (the hassle of SMS is eliminated)

Select the plan that's right for you at ArsenalRecon.com!



ArsenalRecon.com



info@ArsenalRecon.com



[@ArsenalRecon](https://twitter.com/ArsenalRecon)