

[WinCatalog•2012](#)

[Categorizes and organizes any data on or off your PC](#)



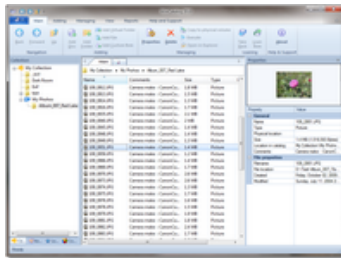
WinCatalog on Facebook

Like 1,235



- [Home](#)
- [Buy Now](#)
- [Upgrade](#)
- [Download](#)
- [Free Version](#)
- [Support](#)
- [News](#)
- [About](#)

WinCatalog 2012 - New Version of the Catalog Software



WinCatalog 2012 Makes Managing Huge Collections Much Easier

WinCatalog 2012 indexes discs, files and folders for finding files and data without having to reach for the original CD or DVD. Stop wasting time looking for a tune or movie stored on a hundred's disc from your growing collection! Simply process your CDs and DVDs with WinCatalog once, and you'll be able to find any file from the collection in a matter of seconds!



Download WinCatalog 2012

[Version 3.6 \(Size: 7.4 MB\),](#)
[English, Arabic, French, German,](#)
[Hungarian, Portuguese, Romanian, Russian](#)

Main advantages of the new version:

It operates with catalogs of any size

WinCatalog 2012 is database driven. It uses industry standard SQLite database engine in the core. This helps to operate with collections of any size. No matter how many discs or files are stored in your collection – WinCatalog 2012 will handle all of them!

It can store picture thumbnails in catalog

WinCatalog 2012 can create picture thumbnails for most popular image types (like jpeg, png, bmp and others) and store them inside the catalog. The thumbnail previews are available even without the link to the original files, so if you search for a photo or picture, you can preview it BEFORE reaching the disc!

Thumbnails for every item

The thumbnails preview picture can be associated with ANY item in the catalog (not only with picture files). For example you can create a catalog of a coin collection and every coin will have it's own picture!

Full Unicode support

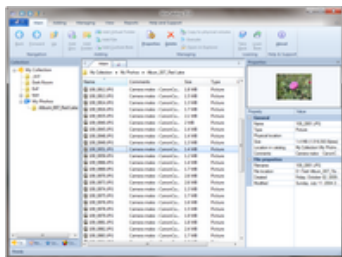
WinCatalog 2012 fully supports Unicode. No matter in what language your files are named. WinCatalog 2012 will correctly catalog all of them.

Location manager

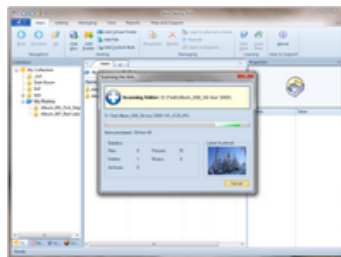
In addition to Contact manager and Keyword manager WinCatalog 2012 has new Location manager which helps to manage physical locations easier. You can add all locations, say “box 1” or “cd wallet 2” and associate every item in the catalog with the location. This will help in finding things faster.

New professional user interface

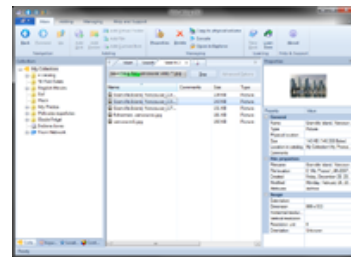
WinCatalog 2012 has tabbed interface which allows you to keep several various search results simultaneously.

WinCatalog 2012 Screenshots

[WinCatalog 2012 main window](#)



[WinCatalog 2012 scanning a disc and creates thumbnails](#)



[WinCatalog 2012 search results](#)

[for pictures](#)

Copyright © 2001-2012 WinCatalog.com | All Rights Reserved

[Home](#) | [Site Map](#) | [About Us](#)