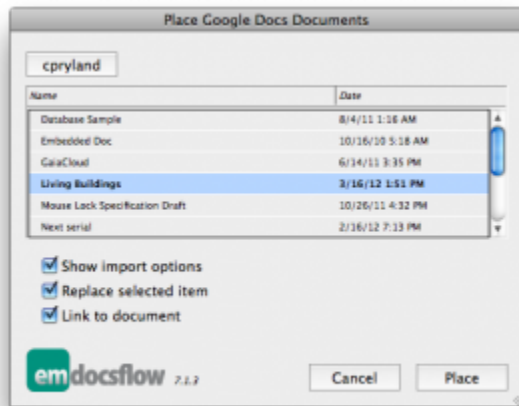


[home](#)[news](#)[product](#)[sales](#)[support](#)[about](#)

# DocsFlow

## Place Google Docs into InDesign for editorial nirvana



DocsFlow marries the collaborative editing power of Google Docs to the layout power of InDesign.

DocsFlow lets you place online Google Docs documents as InDesign story contents, just like normal text files. And, much more importantly, DocsFlow maintains a dynamic link so it can intelligently merge Google Docs document changes into the InDesign story contents on each link update, rather than just replacing the story. So you can format, layout, and make minor edits in InDesign, while you and others edit story content together in real time on Google Docs, without losing any work.

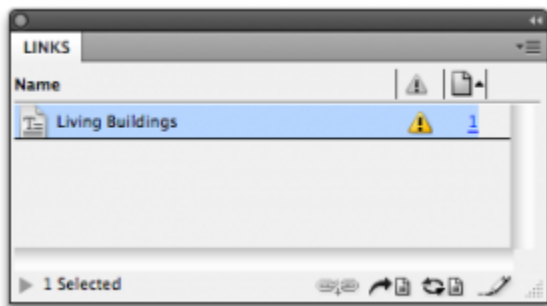
## Overview



(Select 720p from the quality menu (the gear) once it starts, or go full-screen for best effect.)

## Breakthroughs

DocsFlow's first breakthrough idea is to connect the freely-available and popular web-based Google Docs editing tools to InDesign, giving you a zero-cost-per-seat editorial workflow solution that is extraordinarily easy to manage. Using DocsFlow means you need no special resources to build, maintain or learn the editorial side (which is just Google Docs), and means no learning curve on the design side (since DocsFlow builds on the native InDesign story linking and story updating machinery). And getting started couldn't be easier: download and install the plugin, select Place from Google Docs..., log in, and start placing dynamically-linked documents, later merging with a double-click when the remote document is edited.



DocsFlow's second breakthrough is serious technology that enables you to edit both the InDesign story and the Google Docs document independently. When the Google Docs document is edited, you'll see the link's status change to "modified" (a yellow alert

icon), and you can update the story from Google Docs with a double-click on the icon. DocsFlow merges any changes on the Google Docs side into the linked InDesign story, even if the latter has been changed. You can view or edit the original story at any time by using “edit original” (or “without auto-update”). After each update, if you open the story editor with change marks showing, you can see who changed what. Or, you can click the edit original icon in the palette to immediately edit the linked story in Google Docs.

## **Accelerate your workflow**

In the past, if you were collaborating with other folks on stories to be published using InDesign, but couldn't afford a high-end editorial workflow system, you'd usually collect their external documents as Word (or other format) files, often via email or file-sharing of some sort. Once those were all collected (a pain in itself, especially for more than a handful of sources), you'd pull them down to your local system, and import them into your document, and go about your editing and formatting. If your collaborator wanted to update what she sent you, you'd have to get the new story again back down to your local system, and then either re-import it, blowing away all your careful edits and formatting, or else try to eyeball what changed and manually merge those changes (that being at best frustrating, and at worst hopelessly error-prone).

Or, once the external documents were imported into your InDesign document, the latter would become your master, and you'd export PDFs and ship them around to your collaborators for mark-up. That means you'd have a massive manual editing job on your part, once you got backed the marked-up PDFs.

With DocsFlow, your collaborators—as many as you like—can share Google Docs documents with you—as many as you need—, and edit them on the web, even collaborating in real time on the documents. Once you've linked a given source Google Docs document with an InDesign story, you'll notice any edits in Google Docs immediately, and with a double-click on the source-changed icon in the InDesign Links palette, you'll have those changes merged into your InDesign story automatically, using DocsFlow's powerful 3-way merge (of the current story contents and the difference between the previous and current Google Docs document—all of which happens behind the scenes).

If there's a chance of collisions in the editing process, you can use the story editor to see who changed what, and how those changes fit in (or not) with the local story edits.

Note that this means the editing cycle is not fully two-way between InDesign and Google Docs, but what we call “one-and-half-way,” which means that edits on both sides are maintained and merged as needed. We're looking into methods to make the editing cycle fully two-way.

## **Converting your workflow**

If you're drowning in Word files via email as outlined above, converting your workflow is fairly easy: either upload all the Word (or other word processor) files for a given publishing project to GDocs and share them with the original senders for them to edit there, or have the senders upload them themselves and share them with you. Then place each such uploaded document with DocsFlow, have everyone edit the shared Google Docs document instead of sending you further Word documents, and

you're in editorial nirvana!

## **DocsFlow vs. InCopy**

DocsFlow is not competing directly with Adobe's InCopy. The Google Docs user can't "edit to fit," seeing the layout-critical formatting, line breaks, overset copy, etc., that the InCopy user sees by design. Rather, DocsFlow works best when the bulk of the editing will be done on the Google Docs side, with minor edits and all page formatting and layout happening on the InDesign side.

DocsFlow's main advantage is that everyone can see and edit the original copy in real time on Google Docs, at no cost per user. And, in most cases, authors are better off writing with a focus on content rather than eventual layout and formatting.

That said, we do have plans for future product features that will help with copy-fitting and general layout feedback to the Google Docs user.

## **Next steps**

From the sidebars on this page, you can purchase serials, download the latest release for installation or evaluation, view the user guide, release history, and product-related news, or find out about support and using an evaluation copy.

## **DocsFlow for InDesign CS6 (beta)**

Note: These are beta test releases, i.e., candidates for release, but in the process of their final public testing. We can't recommend them for production work yet.

### **DocsFlow 8.1.4b1 Mac**

[Download](#)

### **DocsFlow 8.1.4b1 Win**

[Download](#)

beta release history [View](#)

## **DocsFlow for InDesign CS5/5.5**

### **DocsFlow for InDesign**

[Home](#)

serials (\$200)

[Shop](#)

### **DocsFlow 7.1.4 Mac**

[Download](#)

## **DocsFlow 7.1.4 Win**

[Download](#)

**user guide** (currently viewing)

[View](#)

**release history** [View](#)

**news** [View](#)

Em DocsFlow is the official product name, but we call it DocsFlow for short.

## **DocsFlow for InDesign CS4**

### **DocsFlow 6.1.4 Mac**

[Download](#)

### **DocsFlow 6.1.4 Win**

[Download](#)

## **DocsFlow support**

For support, send us a description of the problem or question in an email started with **File > DocsFlow > Send Email to Support**, which automatically includes the versions of everything in use. Please also send us a copy of the InDesign document in question, which, once you've done a place or update, contains debugging information that can help us diagnose the problem.

If you have a specific GDocs document causing problems, you can share it with [support@emsoftware.com](mailto:support@emsoftware.com) on GDocs to give us (read-only) access.

More general support information: [View](#)

## **DocsFlow evaluation**

The downloaded software is a fully-functional demonstration version by default, and is limited only to a single, updatable Google Docs story link. You should be able to completely explore DocsFlow's operation based on this link.

You can purchase a serial at any point to enable it fully, without re-downloading and re-installing.

More evaluation information: [View](#)

## **DocsFlow recent news**

- [Beta release: DocsFlow 8.1.4 beta 1 for InDesign CS6](#)  
May 21, 2012 in [DocsFlow](#), [news](#)
- [DocsFlow experience at a non-profit](#)  
May 15, 2012 in [case study](#), [DocsFlow](#), [news](#), [testimonials](#)
- [Release: DocsFlow 6/7.1.4 for InDesign CS4 & CS5/5.5](#)  
May 1, 2012 in [DocsFlow](#), [news](#)
- [Release: DocsFlow 6/7.1.3.1 for InDesign CS4 & CS5/5.5](#)  
April 13, 2012 in [DocsFlow](#), [General](#), [news](#)
- [Release: DocsFlow 6/7.1.3 for InDesign CS4 & CS5/5.5](#)  
March 19, 2012 in [DocsFlow](#), [news](#)



## contact

Sales: [sales@emsoftware.com](mailto:sales@emsoftware.com)

Support: [support@emsoftware.com](mailto:support@emsoftware.com)

Twitter: [EmSoftware](#)

News feed, etc: [keeping in touch](#)

**877 984 1010** (toll-free US and Canada)

**(+1) 740 284 1010**

**(+1) 740 314 0204** (fax)

Em Software, Inc.  
39713 Hanover Ridge Rd.  
Scio, OH 43988 (USA)

## recent news

- [Beta release: DocsFlow 8.1.4 beta 1 for InDesign CS6](#)  
May 21, 2012 in [DocsFlow](#), [news](#)
- [Beta release: InCatalog 8.2.9 beta 1 for InDesign CS6](#)  
May 21, 2012 in [EmCatalog](#), [InCatalog](#), [news](#)
- [Beta release: InData 8.1.9 beta 1 for InDesign CS6](#)  
May 18, 2012 in [EmData](#), [InData](#), [news](#)
- [Beta release: Xtags 8.1.4 beta 1 for InDesign CS6](#)  
May 18, 2012 in [news](#), [Xtags](#), [Xtags for InDesign](#)
- [DocsFlow experience at a non-profit](#)  
May 15, 2012 in [case study](#), [DocsFlow](#), [news](#), [testimonials](#)



[WordPress.org](http://WordPress.org)

© 2010 [Em Software](#) - Business WordPress Theme by [ThemeShift](#)

5