



GFI MailEssentials
Email security and anti-spam
software for SMBs

Keeping Spam, Phishing scams and
Malware threats at bay [is easy](#).



TIPS NEWS TOOLS DOWNLOADS MALWARE FORUM BOOKS FREE MAGAZINES SECURITY & PRIVACY

Search

GFI [GFI WebMonitor, Internet content filtering tool for SMBs. Download free trial now!](#)

ADD THIS



AdChoices

[Rip and Replace SonicWALL](#)

Download a free 30-day trial of Kerio Control and make the switch!
kerio.com/control/replac...



XP Firewall Commander

XP Firewall Commander is an easy to use control interface for your Windows XP built-in firewall.

By default, Windows Firewall is turned on for all network interfaces. This helps improve network protection for new Windows XP installations and Windows XP upgrades. Windows Firewall also helps improve protection for new network connections.

XP Firewall Commander lets you **add and remove exceptions** for programs and services so that they can receive inbound traffic.

You may find it useful to use Windows Firewall with no exceptions when you connect to a public network, such as a public network at an airport or hotel. This setting can help protect your computer because **it blocks all attempts to connect to your computer**. When you use Windows Firewall with no exceptions, you can still view Web pages, send and receive e-mail messages, or use an instant messaging program.

In order to see what exceptions are enabled, XP Firewall Commander offers a separate tab called **Add/Remove Programs**. You can easily add a new exception by browsing for the executable file and providing a name. Just as easy you can select one of the active exceptions and click Remove.

If you need to allow specific inbound traffic, XP Firewall Commander permits you to **add a specific port and protocol** (UDP or TCP) and a suitable port name.

The **Firewall Status** area permits you to instantly turn on / off the firewall. This feature should be used whenever you want to block all inbound connections to your computer.

Turning the firewall ON gives you a good protection against internet security threats such as worms, port scans and remote exploit attempts.

As an added bonus feature, XP Firewall Commander offers you the ability to track the firewall activity using the **View Traffic** tab. By monitoring the firewall logs, you get an instant view of the real time security activity that threatens your computer.

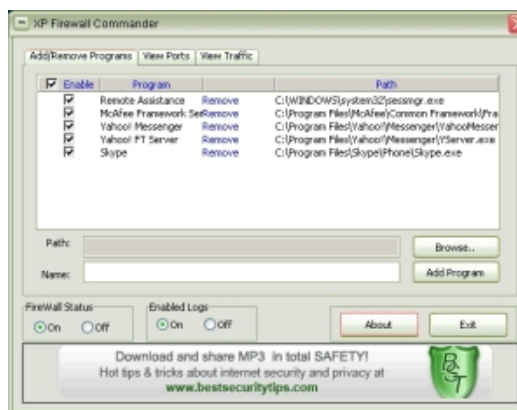
Using the program is very easy because XP Firewall Commander sits in the system tray and whenever you want to adjust the settings of the Windows XP firewall, you just need to click the system tray icon to open the administration interface.

Support

Support is available via dedicated [XP Firewall Commander Forum](#)



[Download XP Firewall Commander Now!](#)



[NEWS](#) | [SECURITY BLOG](#) | [TOOLS](#) | [DOWNLOADS](#) | [TIPS](#) | [SITEMAP](#) | [TERMS AND CONDITIONS](#) | [INTERNET SECURITY SEARCH](#)
[ENGINE](#) | [ADVERTISE ON THIS SITE](#) | [CONTACT](#)
[Feb '09](#) | [Mar '09](#) | [Apr '09](#) | [May '09](#) | [Jun '09](#) | [Jul '09](#) | [Aug '09](#) | [Sep '09](#) | [Oct '09](#) | [Nov '09](#) | [Dec '09](#) | [Jan '10](#) | [Feb '10](#)
4000+ Security Software Downloads