



- [Main Page](#)
- [Blog](#)
- [Search](#)
- [FAQ](#)
- [TOP 10](#)
- [Links](#)
- [Awards](#)
- [Pad Files](#)
- [Contact](#)
- [About...](#)
- [Donate](#)

- [All Utilities](#)
- [Password Tools](#)
- [System Tools](#)
- [Browser Tools](#)
- [Programmer Tools](#)
- [Network Tools](#)
- [Outlook/Office](#)
- [64-bit Download](#)
- [Panel](#)
- [Forensics](#)
- [Code Samples](#)
- [Articles](#)

**USBDeview v1.97 - View all installed/connected USB devices on your system**  
Copyright (c) 2006 - 2011 Nir Sofer



See Also

- [USB over Ethernet](#) - USB to Ethernet Connector enables work with the remote USB devices over Ethernet (Internet/LAN/WAN) as if they were plugged into your own machine. It helps you share a USB device over network among multiple computers so people from all over the world (or your office) can use it. (Available for both Windows and Linux)
- [NK2Edit](#) - Edit, merge and fix the AutoComplete files (.NK2) of Microsoft Outlook.
- [DevManView](#) - Alternative to device manager of Windows.
- [WirelessNetView](#) - Monitor wireless networks on your area.

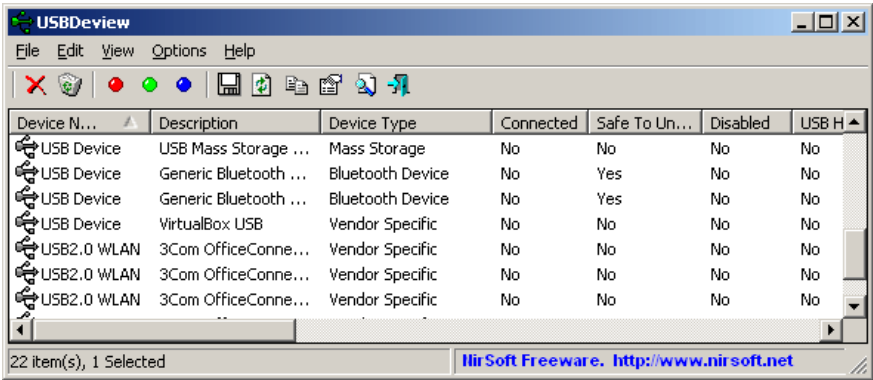
Description

USBDeview is a small utility that lists all USB devices that currently connected to your computer, as well as all USB devices that you previously used.

For each USB device, extended information is displayed: Device name/description, device type, serial number (for mass storage devices), the date/time that device was added, VendorID, ProductID, and more...

USBDeview also allows you to uninstall USB devices that you previously used, disconnect USB devices that are currently connected to your computer, as well as to disable and enable USB devices.

You can also use USBDeview on a remote computer, as long as you login to that computer with admin user.



Search for other utilities in NirSoft

Search

License

This utility is released as freeware. You are allowed to freely distribute this utility via floppy disk, CD-ROM, Internet, or in any other way, as long as you don't charge anything for this. If you distribute this utility, you must include all files in the distribution package, without any modification !

Disclaimer

The software is provided "AS IS" without any warranty, either expressed or implied, including, but not limited to, the implied warranties of merchantability and fitness for a particular purpose. The author will not be liable for any special, incidental, consequential or indirect damages due to loss of data or any other reason.

System Requirement And Limitations

- This utility works on Windows 2000, Windows XP, Windows 2003, Windows Vista, Windows Server 2008, and Windows 7. Windows 98/ME is not supported.

AdChoices ▶

**Vidyo****Telepresence**

Natural, Scalable,  
and Affordable HD  
Video  
Conferencing from  
VSGi

[www.vsg.com](http://www.vsg.com)**Network Monitor  
Tool**

Manage WAN,  
LAN, DB, Apps,  
Routers Agentless  
Monitoring.  
Download Now.  
[OpManager.ManageE...](#)

**Online Training  
Software**

Training available  
online anytime.  
Read "Getting  
Started"  
whitepaper.  
[www.SkillSoft.com](http://www.SkillSoft.com)

**Install USB Port  
Drivers**

Windows  
Xp/Vista/7 Driver  
Tool. Updates All  
PC Drivers  
Instantly.  
[DriverFinderPro.com](http://DriverFinderPro.com)

- In order to disable/enable/uninstall USB items under Windows Vista/7/2008 with UAC turned on, you should right click on USBDeview and choose 'Run As Administrator'. In order to disable/enable USB items on x64 systems, you also must use the x64 version of USBDeview.
- Be aware that USBDeview is still not fully compatible with USB 3.0

**Versions History**

- Version 1.97
  - Added more accelerator keys.
  - Fixed the minimum size of Advanced Options window.
  - Added a few more command-line options.
- Version 1.96
  - Fixed to USBDeview to detect USB hubs (and probably some other devices) as connected.
- Version 1.95
  - Added 'USB Version' column, which displays the USB version of the device. This column is active only when 'Retrieve USB Power/Version Information' option is turned on.
- Version 1.92
  - Added 'Turn Off Device On Disable/Remove' option, only for Windows 7/2008/Vista. As opposed to Windows XP, Windows 7/2008/Vista doesn't turn off the USB device when you disable or 'Safely Remove' the device. This new option make a small Registry change to make Windows 7/2008/Vista behave like Windows XP and turn off the device after disable or 'Safely Remove' action. For more information: [USB Port Remains Active for Disabled or Safely Removed USB Device](#). Be aware that this change takes effect only after reboot, and requires full admin rights (execute USBDeview.exe with 'Run As Administrator')
- Version 1.91
  - For USB To Serial devices, USBDeview now displays the port name (Com1, Com2, Com3,...), if it's stored in the Registry. The port name is displayed on the 'Drive Letter' column.
- Version 1.90
  - Improved the detection of the 'Last Plug/Unplug Date' value.
- Version 1.89
  - Added 'Mark Odd/Even Rows' option, under the View menu. When it's turned on, the odd and even rows are displayed in different color, to make it easier to read a single line.
- Version 1.88
  - Added 'Mark Connected Devices' option. When it's turned on, the plugged USB devices are marked with green background color.
- Version 1.87
  - Added Device Instance ID column.
- Version 1.86
  - USBDeview now displays a message with instructions to run as administrator when you try to disable/enable/remove a device on Windows 7/2008/Vista with UAC turned on.
- Version 1.85
  - Added 'Change Assigned Drive Letter' option, which allows you to change the drive letter that is assigned to a USB device. In the next time that you plug the device, the new drive letter that you chose will be used.
- Version 1.84
  - Added new variables to the execute command option: %firmware\_revision%, %product\_name%, %vendor\_name%
- Version 1.83
  - Fixed bug: When typing commands in the 'Advanced Options' with quotes as the first or last letter, the quotes disappeared when saving to the .cfg file.
- Version 1.82
  - The properties window now contains 2 properties columns, instead of one very long properties column in the previous versions.
- Version 1.81
  - Added new variables to the execute command option: %driver\_file%, %driver\_version%, and %power%
- Version 1.80
  - Added 'Firmware Revision' column.
- Version 1.77
  - Added 'Display Tray Balloon When Device Is Disconnected' option.
- Version 1.76

- Added 'Add Header Line To CSV/Tab-Delimited File' option. When this option is turned on, the column names are added as the first line when you export to csv or tab-delimited file.
- Version 1.75
  - Added 'Driver Description' and 'Driver Version' columns.
  - The status and version of usb.ids (The VendorID/ProductID file) is now displayed in the right side of the bottom status bar. Clicking this usb.ids status will open <http://www.linux-usb.org/usb.ids> in your default Web browser.
- Version 1.70
  - Added option to execute a command when you unplug a USB device (In 'Advanced Options' window)
- Version 1.67
  - You can now send the USB devices information to stdout by specifying an empty filename ("") in the command-line. (For example: usbdevview.exe /text "" >> c:\temp\usb.txt)
  - Added new variables to the execute command option: %device\_type%, %service\_name%, %device\_class%, and %device\_mfg%
- Version 1.65
  - Added 'Power' column, which displays the power required by the device in mA. (Works only for local computer)
- Version 1.60
  - Added 2 new columns: 'Device Class' and 'Device Mfg'.
- Version 1.56
  - Fix bug: when saving USB devices list from command-line, USBDevview saved all items, without considering the last saved configuration.
  - Added command-line options that controls what devices to save or display (/DisplayDisconnected, /DisplayHubs, /DisplayNoPortSerial, /DisplayNoDriver).
- Version 1.55
  - Added 3 new columns of service/driver information: Service Name, Service Description, Driver Filename.
- Version 1.50
  - Improved drive letter detection: USBDevview now also detect the drive letter of hard-disk drives connected to USB. (This improvement only works only for local computer)
- Version 1.48
  - Fixed bug: USBDevview didn't allow you to make a speed test when the drive letter of the USB drive was A: or B:
- Version 1.47
  - Fixed bug: USBDevview displayed wrong drive letters when the serial number or ParentId Prefix contained only one character.
  - Added a separated version for x64 systems, in order to allow you to disable/enable items on x64 systems.
- Version 1.46
  - Added 'ParentId Prefix' column, which shows the ID string of the parent device.
- Version 1.45
  - Fixed bug: On Windows Vista/7, USBDevview failed to detect that USB devices are disabled.
  - Added support for sorting the USB devices list from command-line.
- Version 1.43
  - Fixed issue with Windows 7/Vista: The description field displayed unneeded prefix string like '@oem4.inf,%athr.devicedesc.5523%'.
- Version 1.42
  - Added a few reliability checks for flash drive speed tests. If USBDevview detect that the final speed test result might not be reliable, an error message will be displayed.
- Version 1.41
  - Fixed issue: When USBDevview window is hidden and there is an icon in the taskbar, running USBDevview again will open the existing instance of USBDevview, instead of creating another one.
- Version 1.40
  - Added 'Speed Test' option for testing the read/write speed of your USB flash drive. Also, Added an option to publish your speed test results in <http://usbspeed.nirsoft.net>.
- Version 1.36
  - Fixed bug: USBDevview didn't display some partly installed devices.
- Version 1.35
  - Added 'Vendor Name' and 'Product Name' columns. (Requires to download an external USB IDs file)
  - New variables in command-string: %vid\_hex% and %pid\_hex% (vid and pid values as hexadecimal number)
  - Add icons legend in the help file and in the Web page.

- Version 1.30
  - Added new option: Show Time In GMT.
- Version 1.29
  - Fixed bug: For USB flash drives with multiple drives (like SanDisk Cruzer With U3), USBDeview displayed only one drive letter randomly. Now it can display multiple drive letters.
- Version 1.28
  - Added command-line options: /stop\_by\_pid, /disable\_by\_pid, /enable\_by\_pid, /remove\_by\_pid
- Version 1.27
  - Added new option: Open In RegEdit.
- Version 1.26
  - The 'Advanced Options' dialog-box is now resizable.
  - Added 'USB Hub' column (yes/no).
- Version 1.25
  - Added Disable+Enable option - gives you the affect similar to unplugging and then plugging back the device.
  - Added 'Open Drive' option (For USB flash drives).
- Version 1.22
  - Added new command line options: /remove\_all\_connected, /remove\_all\_disconnected
  - Fixed bug: using /remove\_all removed also the USB hubs and caused the USB to stop working until restarting the computer.
- Version 1.21
  - Added new option: Select Another Font.
- Version 1.20
  - Added new command-line options to disable/enable/remove USB devices.
- Version 1.18
  - Fixed bug: The main window lost the focus when the user switched to another application and then returned back to USBDeview.
- Version 1.17
  - Fixed bug in saving as comma-delimited file when description or name fields contained comma character.
- Version 1.16
  - Added support for saving comma-delimited (.csv) files.
  - Added new command-line option: /scomma
- Version 1.15
  - New options: Disable/enable the selected USB devices (Works only with admin rights)
  - New Option: Start USBDeview As Hidden (Only when 'Put Icon On Tray' is turned on)
- Version 1.12
  - The configuration is now saved to a file, instead of the Registry.
  - New option: Display a balloon in the tray icon when a new device is connected (only for Windows XP or above).
- Version 1.11
  - Fixed bug: Changing the status of 'Put Icon On Tray' also changed the status of 'Show Tooltips'.
- Version 1.10
  - New Option: Put Icon On Tray
  - New Option: AutoPlay on selected devices.
  - New Option: AutoPlay When Device Is Connected.
  - New Option: Execute a command when you insert a USB device. (In Advanced Options)
  - New Option: Disconnect All Devices.
- Version 1.06
  - Added Disconnect/Uninstall buttons to the toolbar.
- Version 1.05
  - New command-line option: /regfile
  - New option: Display USB Hubs.
- Version 1.03 - New command-line option: /stop\_by\_class
- Version 1.02 - New option: Display devices without drivers.
- Version 1.01 - Fixed bug: In some computers, the USB devices list was loaded from the wrong hardware configuration.
- Version 1.00 - First release.

## Using USBDeview

USBDeviceView doesn't require any installation process or additional DLL files. Just copy the executable file (USBDeviceView.exe) to any folder you like, and run it.





The main window of USBDeviceView displays all USB devices installed on your system. You can select one or more items, and then disconnect (unplug) them , uninstall them, or just save the information into text/xml/html file.

### USBDeviceView Columns Description

- **Device Name:** Specifies the device name. For some device, this column may display meaningless name, like "USB Device". If the device name is meaningless, try to look at the Description column.
- **Device Description:** The description of the device.
- **Device Type:** The device type, according to USB class code. For more information about USB classes: [USB Class Codes](#).
- **Connected:** Specifies whether the device is currently connected to your computer. If the device is connected, you can use the 'Disconnect Selected Devices' option (F9) to disconnect the device.
- **Safe To Unplug:** Specifies whether it's safe to unplug the device from the USB plug without disconnecting it first. If the value of this column is false, and you want to unplug this device, you must first disconnect this device by using the 'Disconnect Selected Devices' option (F9) of USBDeviceView utility, or by using the 'Unplug or Eject Hardware' utility of Windows operating system.
- **Drive Letter:** Specifies the drive letter of the USB device. This column is only relevant to USB flash memory devices and to USB CD/DVD drives. Be aware that USBDeviceView cannot detect drive letters of USB hard-disks.
- **Serial Number:** Specifies the serial number of the device. This column is only relevant to mass storage devices (flash memory devices, CD/DVD drives, and USB hard-disks).
- **Created Date:** Specifies the date/time that the device was installed. In most cases, this date/time value represents the time that you first plugged the device to the USB port. However, be aware that in some circumstances this value may be wrong.
- **Last Plug/Unplug Date:** Specifies the last time that you plugged/unplugged the device. This date value is lost when you restart the computer.
- **VendorID/ProductID:** Specifies the VendorID and ProductID of the device. For unofficial list of VendorID/ProductID, [click here](#).
- **USB Class/Subclass/Protocol:** Specifies the Class/Subclass/Protocol of the device according to USB specifications. For more information about USB classes: [USB Class Codes](#).
- **Hub/Port:** Specifies the hub number and port number that the device was plugged into. This value is empty for mass storage devices.

**Notice:** According to user reports, On some systems the 'Last Plug/Unplug Date' and the 'Created Date' values are initialized after reboot. This means that these columns may display the reboot time instead of the correct date/time.

### USBDeviceView Icons Legend

	The device is not connected.
	The device is connected. It's safe to physically unplug the device without disconnecting it.
	The device is connected. You must disconnect the device from USBDeviceView or from Windows "Safely Remove Hardware" option before you physically unplug it.
	The device is disabled.

### 'Vendor Name' And 'Product Name' Columns

Starting from version 1.35, you can view the vendor name and product name of your USB devices. In order to use this feature, you have to [download](#) the USB ID's list of Stephen J. Gowdy (<http://www.linux-usb.org/usb.ids>) and put the file in the same folder of USBDeviceView.exe. The name of the file must remain as 'usb.ids'.

### Speed Test for USB Flash Drives

Starting from version 1.40, USBDeviceView allows you to test the read/write speed of your USB flash drive. The test is made by writing a large file (named \$speed\_test\_nirsoft\$.dat) into your USB flash drive, and then reading it back for

testing the read speed. Be aware that you need at least 100 MB of free disk space in order to successfully make this speed test. Also, be aware that this test is made with sequential read and write operations. When using multiple small files, the read/write performances are usually much lower than sequential read/write.

In order to make a speed test to your flash drive, simply select the desired item in the main window, and then choose the 'Speed Test' option from the File menu, or press Ctrl+T. In the speed test window, verify that the selected drive letter is the right one, and then press the 'Start Test' button. Wait a few seconds until the write and read tests are finished.

### Publishing Your Speed Test Result

If you want to share your speed test results, so other people that want to purchase a USB flash drive will be able to easily compare the speed of different flash drives, you can use the 'Publish Test Result' option to do that.

When you successfully finish a speed test, the 'Publish Test Result' button is automatically enabled. Clicking this button opens a new window that displays all the data that will be sent to <http://usbspeed.nirsoft.net> Web site, and ask you to confirm the speed test publishing. Be aware that only the data displayed in this window is transmitted to <http://usbspeed.nirsoft.net> Web site. USBDeview doesn't send the serial number of your USB device or any other information that may violate your privacy.

### AutoPlay

Starting from version 1.10, USBDeview allows you to automatically run a file on USB flash memory devices, according to AutoRun.inf filename. You can manually activate the AutoPlay feature by selecting the desired device and pressing F8. Alternatively, You can check the "AutoPlay When Device Is Connected" option, and then the AutoPlay feature will be automatically activated when you insert a USB flash memory device. Be aware that this feature only works if USBDeview detects the drive letter of the device.

### Execute a command when you insert a USB device

Starting from version 1.10, USBDeview allows you to execute a command from exe/cmd/bat file in every time that insert a USB device to your system. In order to use this feature, go to 'Options->Advanced Options', select the 'Execute..' check-box, and type the exe/cmd file that you want to run. You can also use the following special variables in this command string: %device\_name%, %device\_desc%, %drive%, %serial\_number%, %vid%, %pid%, %vid\_hex%, %pid\_hex%, %device\_type%, %service\_name%, %device\_class%, %device\_mfg%. USBDeview will automatically replace these variables with the appropriate data of the device that you inserted. For example, if you want to pass to your exe file 2 parameters - the serial number of the device, and the drive letter: c:\temp\test.exe "%serial\_number%" "%drive%"

### Known Limitations/Issues

- For all devices except 'Mass Storage' Devices: If you plug a device to one USB port, and then you plug the same device to another USB port, a new record of the same device will be created for each USB port that you plug. So if you see multiple lines for exactly the same device, it means that you plugged it to different USB ports. The USB ports that you plugged are specified in 'Hub/Port' column. However, for 'Mass Storage' device, only one record is created for each device, even if you plug it to different USB port.
- When a USB device is added/removed on your local computer, UDBDeview utility automatically updates the list of USB devices.  
But... If you UDBDeview is connected to a remote computer, the list won't refresh automatically when a device is added or removed. You must refresh it manually, by pressing F5 key.

### Connecting To Remote Computer

The following command-line options allows you to connect to remote computers. You must login to the remote computer with admin user in order to use these options.

- **/remote <\\Computer Name>**  
Allows you to connect a single remote computer.  
For Example:

USBDevView.exe /remote \\MyComp

- **/remotefile <Computers List File>**

Allows you to connect multiple computers, and view all their USB activity in one window. The computers list file should be a simple Ascii text file with computer names separated by colon, semicolon, space, tab characters or CRLF.

For Example:

USBDevView.exe /remotefile "c:\temp\comp.txt"

In order to successfully get full admin access to the remote computer, read this Blog post: [How to connect a remote Windows 7/Vista/XP computer with NirSoft utilities.](#)

## Connecting To external SYSTEM registry file

If you have the 'SYSTEM' registry file of external operating system, you can use the following command-line option to read the USB devices list from it:

**/regfile <SYSTEM Registry File>**

For Example:

USBDevView.exe /regfile "c:\temp\regfiles\SYSTEM"

USBDevView.exe /regfile "d:\windows\system32\config\SYSTEM"

This option has some limitations:

- You cannot read a Registry file of Windows XP/2003/Vista from Windows 2000 Machine.
- USBDevView works in read-only mode. (You cannot uninstall a device from external file)

## Stop/Disconnect Command-Line Options

- **/stop {/showmsg} {\\RemoteComputer} <Device Name>**

Stop/disconnect a USB device by specifying its name or description.

You don't have to specify the whole name or description. You can also specify only a part of the name or description string, and USBDevView will identify it. For example, If the device name is 'Kingston DataTraveler 2.0', you can simply put 'kingston' or 'DataTraveler' in the device name parameter, and USBDevView will disconnect the right device.

If you want that a message/balloon will be displayed after the device is disconnected, add the '/showmsg' parameter. (Windows 2000 displays a message-box, Windows XP displays a balloon)

If you want to disconnect a device in a remote computer, specify the remote computer name, with \\ prefix.

You must login to the remote computer with admin rights in order to do that.

Examples:

USBDevView.exe /stop /showmsg "DVD RW"

USBDevView.exe /stop "DataTraveler"

USBDevView.exe /stop \\comp01 "SanDisk Cruzer"

- **/stop\_by\_serial {/showmsg} {\\RemoteComputer} <Device Name>**

Similar to /stop command, but instead of specifying a device name, you should specify the serial number of the device. Works only with mass storage devices.

Examples:

USBDevView.exe /stop\_by\_serial ea051261

USBDevView.exe /stop\_by\_serial /showmsg 876534513

- **/stop\_by\_drive {/showmsg} {\\RemoteComputer} <Device Name>**

Stop/disconnect a USB device by specifying its drive letter. Works only with USB flash drives and CD/DVD devices.

Examples:

USBDevView.exe /stop\_by\_drive g:

USBDevView.exe /stop\_by\_drive /showmsg f:

USBDevView.exe /stop\_by\_drive /showmsg \\comp02 t:

- **/stop\_by\_class {/showmsg} {\\RemoteComputer} <USB Class;USB SubClass;USB Protocol>**

Stop/disconnect a USB device by specifying the class/subclass/protocol combination.

For example, if you want to stop all 'Mass Storage' devices, you should specify the following class/subclass/protocol combination: 08;06;50



Examples:

USBDevice.exe /stop\_by\_class /showmsg 08;06;50

USBDevice.exe /stop\_by\_class 03;01;02

- **/stop\_by\_pid {/showmsg} {\\RemoteComputer} <VendorID;ProductID>**

Stop/disconnect a USB device by specifying the VendorID/ProductID. You can specify only the VendorID if you want to disconnect all devices with that VendorID.

Examples:

USBDevice.exe /stop\_by\_pid /showmsg 13fe;1a00

USBDevice.exe /stop\_by\_pid 04f9

- **/stop\_all {/showmsg} {\\RemoteComputer}**

Stop/disconnect all USB devices currently connected to your computer.

## Disable/Enable/Remove Command-Line Options

Starting from version 1.20, you can also use the following commands to disable, enable or remove USB devices from command-line:

- **/disable {\\RemoteComputer} <Device Name>**
- **/disable\_by\_serial {\\RemoteComputer} <Device Name>**
- **/disable\_by\_drive {\\RemoteComputer} <Device Name>**
- **/disable\_by\_class {\\RemoteComputer} <USB Class;USB SubClass;USB Protocol>**
- **/disable\_by\_pid {\\RemoteComputer} <VendorID;ProductID>**
- **/disable\_all {\\RemoteComputer}**
- **/enable {\\RemoteComputer} <Device Name>**
- **/enable\_by\_serial {\\RemoteComputer} <Device Name>**
- **/enable\_by\_drive {\\RemoteComputer} <Device Name>**
- **/enable\_by\_class {\\RemoteComputer} <USB Class;USB SubClass;USB Protocol>**
- **/enable\_by\_pid {\\RemoteComputer} <VendorID;ProductID>**
- **/enable\_all {\\RemoteComputer}**
- **/remove {\\RemoteComputer} <Device Name>**
- **/remove\_by\_serial {\\RemoteComputer} <Device Name>**
- **/remove\_by\_drive {\\RemoteComputer} <Device Name>**
- **/remove\_by\_class {\\RemoteComputer} <USB Class;USB SubClass;USB Protocol>**
- **/remove\_by\_pid {\\RemoteComputer} <VendorID;ProductID>**
- **/remove\_all {\\RemoteComputer}**
- **/remove\_all\_connected** - Remove all connected USB devices.
- **/remove\_all\_disconnected** - Remove all disconnected USB devices.

## Save Command-Line Options

/text <Filename>	Save the list of all USB devices into a regular text file.
/stab <Filename>	Save the list of all USB devices into a tab-delimited text file.
/scomma <Filename>	Save the list of all USB devices into a comma-delimited text file.
/stabular <Filename>	Save the list of all USB devices into a tabular text file.
/shtml <Filename>	Save the list of all USB devices into HTML file (Horizontal).
/sverhtml <Filename>	Save the list of all USB devices into HTML file (Vertical).
/sxml <Filename>	Save the list of all USB devices to XML file.
/sort <column>	This command-line option can be used with other save options for sorting by the desired column. If you don't specify this option, the list is sorted according to the last sort that you made from the user interface. The <column> parameter can specify the column index (0 for the first column, 1 for the second column, and so on) or the name of the column, like "Device Name" and "Description". You can specify the '~' prefix character (e.g. "~Description") if you want to

	<p>sort in descending order. You can put multiple /sort in the command-line if you want to sort by multiple columns.</p> <p>Examples:  USBDevice.exe /shtml "f:\temp\usb-list.html" /sort 2 /sort ~1  USBDevice.exe /shtml "f:\temp\usb-list.html" /sort "Device Type" /sort "Device Name"</p>
/nosort	When you specify this command-line option, the list will be saved without any sorting.
/DisplayDisconnected <0   1>	Specifies whether to show disconnected devices. 0 = No, 1 = Yes.
/DisplayNoPortSerial <0   1>	Specifies whether to show devices without port/serial number. 0 = No, 1 = Yes.
/DisplayNoDriver <0   1>	Specifies whether to show devices without driver. 0 = No, 1 = Yes.
/DisplayHubs <0   1>	Specifies whether to show USB hubs. 0 = No, 1 = Yes.
/RetrieveUSBPower <0   1>	Specifies whether to retrieve USB power/version information.
/MarkConnectedDevices <0   1>	Specifies whether to mark connected devices.
/TrayIcon <0   1>	Specifies whether to start USBDevice with a tray icon.

### Translating USBDevice to other languages

In order to translate USBDevice to other language, follow the instructions below:

1. Run USBDevice with /savelangfile parameter:  
USBDevice.exe /savelangfile  
A file named USBDevice\_lng.ini will be created in the folder of USBDevice utility.
2. Open the created language file in Notepad or in any other text editor.
3. Translate all string entries to the desired language. Optionally, you can also add your name and/or a link to your Web site. (TranslatorName and TranslatorURL values) If you add this information, it'll be used in the 'About' window.
4. After you finish the translation, Run USBDevice, and all translated strings will be loaded from the language file.  
If you want to run USBDevice without the translation, simply rename the language file, or move it to another folder.

### Feedback

If you have any problem, suggestion, comment, or you found a bug in my utility, you can send a message to [nirsofer@yahoo.com](mailto:nirsofer@yahoo.com)

[Download USBDevice](#)

[Download USBDevice for x64 systems](#)



USBDeview is also available in other languages. In order to change the language of USBDeview, download the appropriate language zip file, extract the 'usbdeview\_lng.ini', and put it in the same folder that you installed USBDeview utility.

Language	Translated By	Date	Version
<a href="#">Arabic</a>	Abo Rehaam	29/12/2011	1.97
<a href="#">Brazilian Portuguese</a>	<a href="#">Geraldo Coimbra</a>	02/11/2011	1.96
<a href="#">Bulgarian</a>	<a href="#">Hristo Drumev</a>	15/09/2007	
<a href="#">Czech</a>	<a href="#">Miroslav Machacek</a>	10/04/2010	
<a href="#">Czech</a>	Shar (viteco(at-sign)centrum.cz)	09/12/2011	1.96
<a href="#">Danish</a>	Christian Læssøe	29/10/2009	
<a href="#">Dutch</a>	Jan Verheijen	07/12/2011	1.95
<a href="#">Euskera</a>	<a href="#">Gorbeia</a>	14/07/2011	
<a href="#">Finnish</a>	Olli	22/10/2007	
<a href="#">French</a>	<a href="#">Eric FICHOT</a>	21/12/2011	1.95
<a href="#">French</a>	aMadEUs	21/11/2011	1.96
<a href="#">Galician</a>	<a href="#">Xosé Antón Vicente Rodríguez</a>	13/01/2007	
<a href="#">German</a>	<a href="#">«Latino» auf WinTotal.de</a>	27/12/2011	1.97
<a href="#">Greek</a>	T. Katsageorgis, G. Georgiou	03/08/2008	
<a href="#">Hungarian</a>	<a href="#">USiTE.hu</a>	20/09/2007	
<a href="#">Hungarian</a>	<a href="#">Tamás Ferenc</a>	09/07/2011	1.90
<a href="#">Italian</a>	Massimo Rosi	11/10/2011	1.95
<a href="#">Italian</a>	<a href="#">Fabio Milocco</a>	05/10/2010	1.80
<a href="#">Japanese</a>	<a href="#">ISHIGAKI, Kazuhito</a>	08/06/2009	
<a href="#">Korean</a>	Jong Ku Lee.(ÀÏÁ¼±,)	23/11/2011	

<a href="#">Norwegian</a>	Johnny Dag Hansen	28/07/2009	
<a href="#">Polish</a>	Hightower	07/12/2011	1.95
<a href="#">Romanian</a>	<a href="#">Jaff (Oprea Nicolae)</a>	27/12/2011	1.97
<a href="#">Russian</a>	Dmitry Yerokhin	09/10/2011	1.95
<a href="#">Simplified Chinese</a>	renda	23/01/2010	
<a href="#">Simplified Chinese</a>	<a href="#">Lewen@²©ÑǺÓîĐù</a>	27/10/2010	1.80
<a href="#">Simplified Chinese</a>	Sionwave (ũĐĂĐPŎý)	28/03/2011	1.88
<a href="#">Slovak</a>		28/02/2010	
<a href="#">Spanish</a>	<a href="#">Arturo Vergara</a>	23/10/2009	
<a href="#">Swedish</a>	Leif Larsson	28/12/2011	1.97
<a href="#">Traditional Chinese</a>	Wing Lee	08/09/2009	1.43
<a href="#">Traditional Chinese</a>	<a href="#">𐄂𐄂𐄂(ǎq@ǎE©Ò)</a>	15/11/2011	
<a href="#">Thai</a>	»ĂĐÊÔ,Ôi áÀÙàğŎĂÇ	26/03/2008	
<a href="#">Turkish</a>	HARUN ARI	24/10/2011	1.95
<a href="#">Valencian</a>	<a href="#">vjatv</a>	17/07/2008	