

**LatestVersion: v0.50a****Windows Log Management**Collect, analyze, report & alert on logs from
NT, XP, 2000/3 & others**Before you continue:**Run a Free Scan for Windows Errors with
Award Winning Registry Booster

by Geeky

<http://emule-project.net>**..eMuleNAV**

..Start
..News
..Download
..Screenshots
..Help&Support
..Skins
..Forum
..Content DB
..Links
..Team
..Contact
..Donations
..Shop

..SiteSearch

Help **search**

sourceforge**Cuddle eMule****Download eMule**

Note: The installer comes with all languages. The binaries only come with 4
(English,German,French,Spanish).

Additional languages can be downloaded by eMule on demand (select the language from the
eMule preferences).

To the ED2k-Links of current versions...

Installer v0.50a Downloads: 4,630,282 | All Versions: 448,245,578

Download

This application installs or updates eMule by a setup routine interactively, containing all
languages and help files.

Binaries v0.50a Downloads: 307,033 | All Versions: 44,218,801

Download

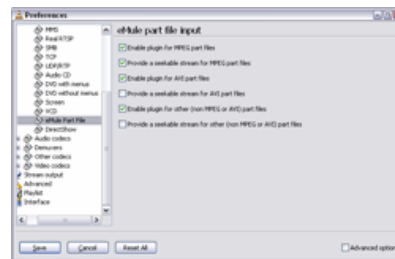
This archive contains only the files you need to run eMule and needs to be unzipped, with 4
languages only

Sourcecode v0.50a Downloads: 191,075 | All Versions: 21,410,970

Download

This archive contains only the sourcefiles of this release and needs to be unzipped. For
developers.

For a list of all previous versions, visit the [download page of this project](#) on Sourceforge.net!

Extras and additional tools**eMule part file access module v0.5.1 for VideoLAN v1.0.5**

The purpose of this access module is to improve the
ability of VideoLAN Client (VLC v1.0.5) to preview
incomplete downloads (eMule part files) of video
files.

Because an eMule part file usually does not contain
a complete media stream, VLC has to scan the
entire file to find all actually available data. The
process of scanning the entire file may take a rather

long time, depending on the actual data available and the file size.

This access module will evaluate the eMule part.met file of the corresponding part file to
determine what file data is actually available. With this information, the access module is
capable of creating a virtual media stream without any gaps and will feed this media stream
right into VLC, and thus VLC will no longer have to scan the entire file, because it will "see"

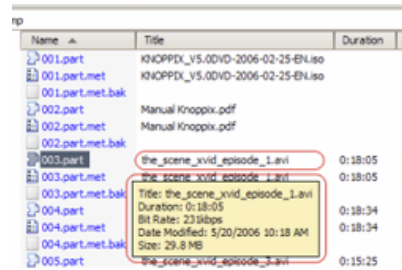
only the actually available data in the part file.

More information is available in [the Readme](#) (also in the download) and in the [documentation](#).

[Download Plugin](#)

[Download Plugin Sources](#)

eMule Shell Extension v1.1.0



The eMule Shell Extension enables the Windows Explorer to display additional information for eMule .part.met and .part files which would be otherwise only visible from within eMule itself. The information is displayed in Tooltips, Statusbar, Detailpane and Detailview of Windows Explorer (see the attached screenshot).

[Download Shell Extension](#)

[Download Shell Extension Sources](#)

Web Browser Search Add-On for Firefox



This Add-On allows you to make eMule search for any text you select in your browser without having to switch to eMule and retype everything into eMule's search panel.

[Download Search Add-On for Firefox](#)

Link Creator

The Link Creator is a convenient tool for generating eD2k links in various formats. Especially useful for creating links with HTTP sources. Web masters: See this [help topic](#) per the HTTP links can greatly help releasing popular files.

[Download Link Creator](#)

[Download Link Creator Sources](#)

MuleMRTG

MRTG - Multi Router Traffic Grapher is a tool which displays this information as graphs in HTML documents.

The Windows NT series (NT, 2k, XP, 2003) is able to log and display performance information with the built in perfmon console. eMule (v.42.1+) is also able to log some performance data in the same format as perfmon does.

Please read [these installation information](#) first!
Then [download the installer](#) of MRTG for eMule.

Media Info

[MediaInfo](#) is a project to display extended information on media files and also provides the MediaInfo.dll which can be copied to eMule's install directory to show more information on media files in the *Show Details* dialog. It even checks if the file extension is correct according to the file's header.

[Download MediaInfo.dll](#)

Help files

Helpfiles contain a lot of useful information, explanation, FAQ and guides.
Download the helpfile of your choice into the eMule installation folder! Then press F1 within eMule to start the help!

[English](#) (v.44a)
[German](#) (v.43b)
[French](#) [Ogmios] (v.30c)
[Spanish](#) [linux_rod0] (v.42f)
[Chinese traditional](#) [CML] (v.43b)
[Italian](#) [enkyDEV Team] (v.27c)
[Portuguese \(Brazil\)](#) [CrazyHorse] (v.42f)