

PERFORMER COUNTS ON STAGE AND FIELD

- 1. VOGUE:
CLEO ENTRANCE-
VOGUE DANCERS- 150 MEN
12 DANCERS
- 2. MUSIC:
SLACK LINE- 2 PERFORMERS
- 3. GIMME ALL YOUR LOVE:
DANCING DOLLS- 20 DOLLS
GUEST- 2 GUEST
- 4. TRANSITION:
DRUM LINE- 100 DRUMMERS
- 5. LIKE A PRAYER:
GUEST- 1 GUEST
FULL CHOIR- 200 CHOIR

Tribe, Inc. East
373 Round Hill Road
Salem, CT 06420
860.833.1999

Tribe, Inc. West
1635 Electric Ave. Suite A
Venice, CA 90291
310.452.8883 Phone
310.452.8673 Fax

This drawing and the ideas, arrangement, designs, and plans indicated hereon or represented hereby are owned by and remain the exclusive property of Tribe, Inc. They have been created and developed for the use on and in connection with the specified project. Written dimensions on drawings shall have authority over scaled. Contractors and manufacturers shall verify and be responsible for all dimensions and conditions on the job site. Any variations from drawings are to be reported to Tribe, Inc. prior to performing work. These drawings represent visual concepts and construction and rigging suggestions only. The designer is unqualified to determine structural appropriateness of this design and will not assume responsibility for improper engineering, construction, rigging, handling or use of this scenery. All materials must comply with the most stringent applicable federal and local fire and safety codes.

PRELIMINARY DESIGN FOR DISCUSSION ONLY

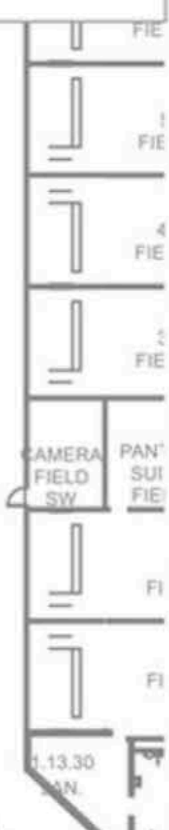
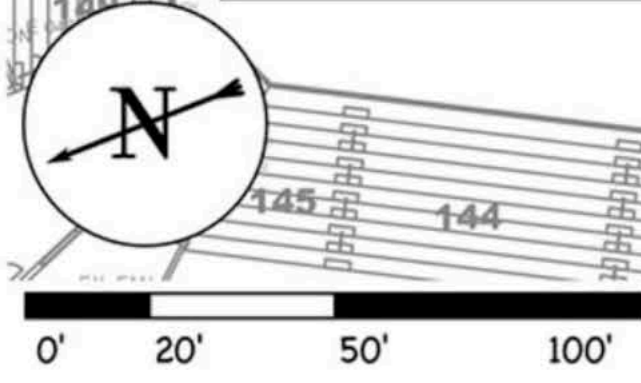
DATE	VERSION
REV. 12.16.11	E

PRODUCTION DESIGNER
BRUCE RODGERS

DRAWN BY
DOUGLAS COOK

SCALE
1/32"

2 VOGUE GLADIATORS



SOUTHWEST TUNNEL ENTRY