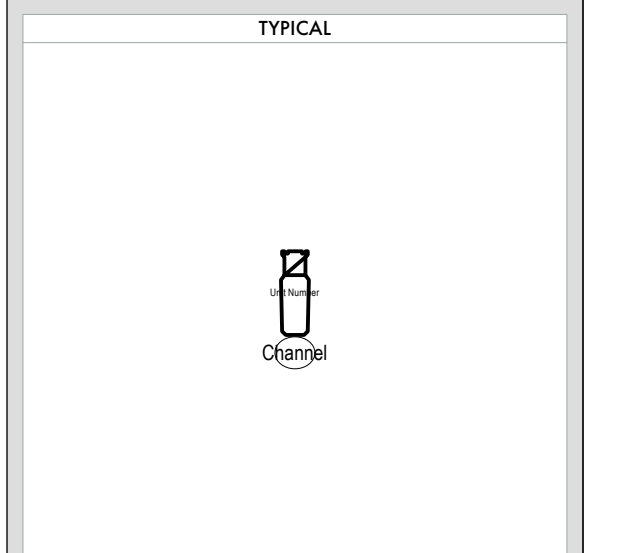


**NOTES**

- ALL UNITS ON 18" CENTERS UNLESS NOTED
- TRIM HEIGHTS ARE MEASURED FROM THE HOUSE DECK TO THE HANGING PIPE OR SIDEARM
- DISTANCE FROM CL IS MEASURED TO THE CENTER OF THE PIPE
- DISTANCE FROM PLASTER LINE IS MEASURED TO THE CENTER OF THE PIPE (BOOKS) OR THE CENTER OF THE DS (MOST VERTICAL (LADDERS))
- PREPARE SPARE CIRCUITS AT EACH POSITION

- KEY**
- Robe Lighting Frite LX @25 W
  - MAC Ultra Performance Hung @1450 W
  - MAC Viper XP @1540 W
  - MAC ENCORE COLO
  - GLP Impression XS @70 W
  - Marin Mac Aura XB @60 W
  - GLP Impression M Bar 20 @40 W
  - ETC S4 ERS ETC 14" @70 W
  - ETC S4 ERS ETC 19" @70 W
  - ETC S4 ERS ETC 26" @70 W
  - ETC S4 ERS ETC 36" @70 W
  - ETC S4 LED S3 Luvr ETC XLT 14" @37 W
  - ETC S4 LED S3 Luvr ETC XLT 19" @37 W
  - ETC S4 LED S3 Luvr ETC XLT 26" @37 W
  - ETC S4 LED S3 Luvr ETC XLT 36" @37 W
  - ETC 200 VHS (RGB) Seleco 75" @5 W
  - Adora PinBox @15 W
  - ChromaD Colorora II 12 @15 W
  - ChromaD Colorora II 12 @15 W
  - ChromaD Colorora II 72 @60 W



**LIGHTING DESIGN**  
**DONALD HOLDER**  
 912-797-3443  
 DHOLDERLIGHTING@GMAIL.COM

**ASSOCIATE**  
**NICK SOLYOM**  
 (914) 823-7154  
 NICK@SOLYOMDESIGN.COM

THE DRAWING AND INFORMATION CONTAINED HEREIN REPRESENTS VISUAL CONCEPTS AND CONSTRUCTION SUGGESTIONS ONLY. THE DESIGNER IS UNQUALIFIED TO DETERMINE THE STRUCTURAL APPROPRIATENESS OF THIS DESIGN AND WILL NOT ASSUME RESPONSIBILITY FOR IMPROPER ENGINEERING, ELECTRIFICATION, CONSTRUCTION, HANDLING, OR USE OF THIS DESIGN. ALL MATERIALS, CONSTRUCTION, AND WIRING THROUGHOUT SHALL COMPLY WITH THE MOST STRINGENT OF FEDERAL, STATE, AND LOCAL FIRE AND SAFETY CODES.

IT MUST BE ENSURED BY PRODUCTION MANAGER & PRODUCTION ELECTRICIAN THAT ALL ELEMENTS OF THIS DESIGN (INCLUDING ALL SMOKE AND HAZE EFFECTS) COMPLY WITH LOCAL, NATIONAL AND INTERNATIONAL FIRE AND HEALTH & SAFETY REGULATIONS AND THAT THEY DO NOT HAZARD TO THE HEALTH & WELFARE OF EMPLOYEES OR AUDIENCE. IN THE EVENT THAT THE DESIGN IS FOUND NOT TO COMPLY, THE DESIGNER WILL ADJUST THE DESIGN IN CONSULTATION WITH THEM AS NECESSARY.



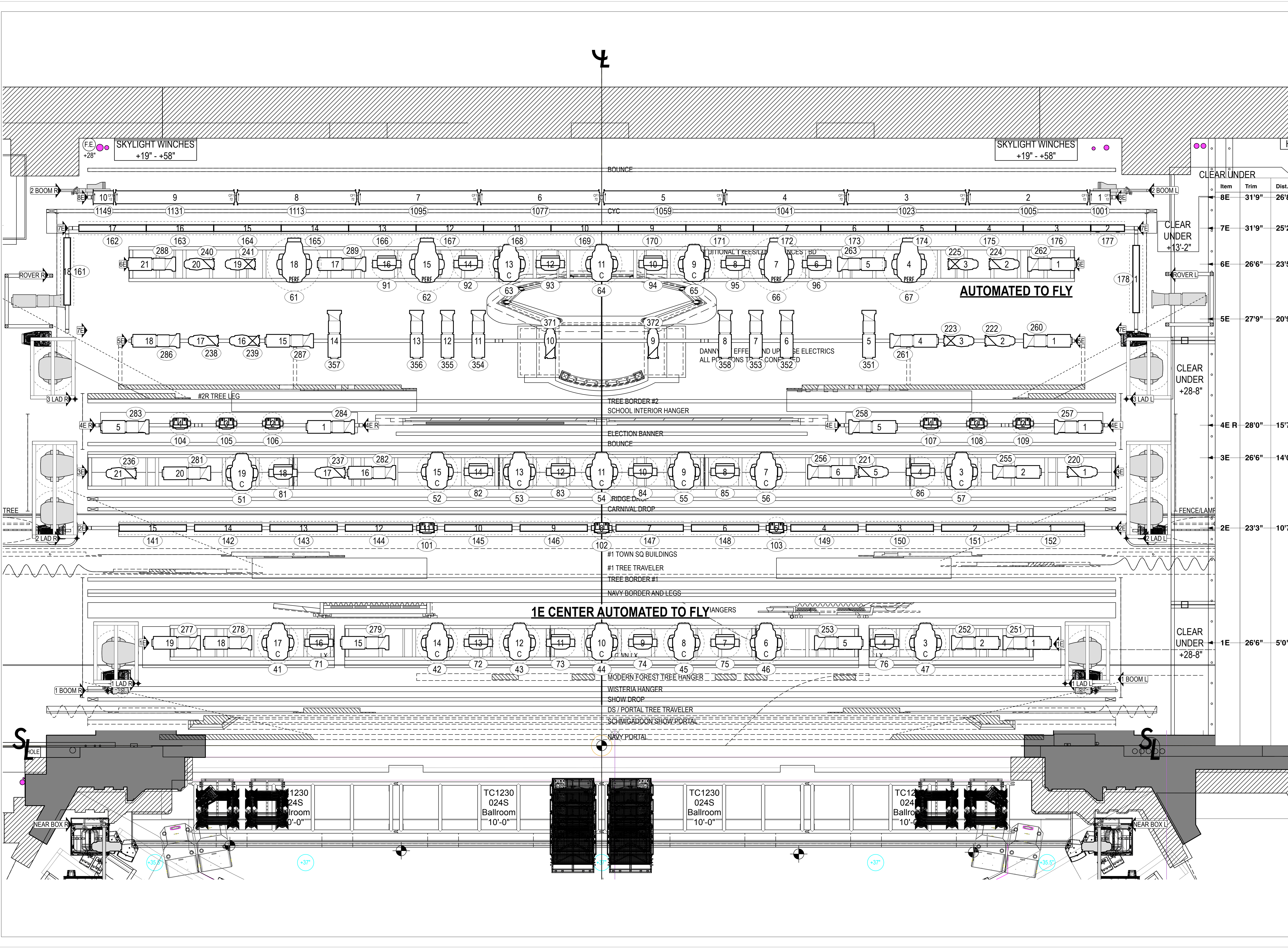
**DIRECTOR** CHRISTOPHER GATELLI  
**CHOREOGRAPHY**  
**MUSIC & LYRICS** CINCO PAUL  
**BOOK** CINCO PAUL  
**VENUE** NEDERLANDER THEATRE  
 208 W 41ST STREET  
 NEW YORK NY 10036

**SCENIC DESIGN** SCOTT PASK  
**COSTUME DESIGN**  
**LIGHTING DESIGN** DONALD HOLDER

**GENERAL MANAGER**  
**PRODUCTION MANAGER** JUNIPER STREET

**LX PLOT 1/4 OVERVIEW**

SCALE: 1/48 PLATE: 01 OF 8  
 DATE: 2026-01-19  
 DRAWN: NAS



**NOTES**

- ALL UNITS ON 18" CENTERS UNLESS NOTED
- TRIM HEIGHTS ARE MEASURED FROM THE HOUSE DECK TO THE HANGING PIPE OR SIDARM
- DISTANCE FROM CL IS MEASURED TO THE CENTER OF THE PIPE
- DISTANCE FROM PLASTER LINE IS MEASURED TO THE CENTER OF THE PIPE (BOOMS) OR THE CENTER OF THE DS MOST VERTICAL (LADDERS)

PREPARE SPARE CIRCUITS AT EACH POSITION

**KEY**

	Rode Lighting Floe LX @126 W
	MAC Ultra Performance Hung @1450 W
	MAC Viper XP @1540 W
	MAC ENCORE COLO
	GLP Ingression XS
	Marti Mac Area X8
	GLP Ingression X4 Bar 20 @480 W
	ETC S4 ERS ETC 14" @750 W
	ETC S4 ERS ETC 19" @750 W
	ETC S4 ERS ETC 26" @750 W
	ETC S4 ERS ETC 30" @750 W
	ETC S4 LED S3 Lux ETC XDLT 14" @307 W
	ETC S4 LED S3 Lux ETC XDLT 19" @307 W
	ETC S4 LED S3 Lux ETC XDLT 26" @307 W
	ETC S4 LED S3 Lux ETC XDLT 30" @307 W
	ETC 200 V4 (R2) Seleco 75" @5 W
	Astra PanelBox @15 W
	Chroma Colorflex I 12 @15 W
	Chroma Colorflex I 12 @15 W
	Chroma Colorflex I 72 @60 W

**TYPICAL**

Item	Trim	Dist.
8E	31'9"	26'8"
7E	31'9"	25'2"
6E	26'6"	23'5"
5E	27'9"	20'9"
4E R	28'0"	15'7"
3E	26'6"	14'0"
2E	23'3"	10'7"
1E	26'6"	5'0"

**LIGHTING DESIGN**  
 DONALD HOLDER  
 912-797-3444  
 DHD@LIGHTINGDESIGN.COM

**ASSOCIATE**  
 NICK SLYOM  
 (914) 823-7154  
 NICK@SOLYOMDESIGN.COM

THE DRAWING AND INFORMATION CONTAINED HEREIN REPRESENTS VISUAL CONCEPTS AND CONSTRUCTION SUGGESTIONS ONLY. THE DESIGNER IS UNQUALIFIED TO DETERMINE THE STRUCTURAL APPROPRIATENESS OF THIS DESIGN AND WILL NOT ASSUME RESPONSIBILITY FOR IMPROPER ENGINEERING, ELECTRICAL, OR CONSTRUCTION HANDLING, OR USE OF THIS DESIGN. ALL MATERIALS, CONSTRUCTION, AND WIRING THROUGHOUT SHALL COMPLY WITH THE MOST STRINGENT OF FEDERAL, STATE, AND LOCAL FIRE AND SAFETY CODES.

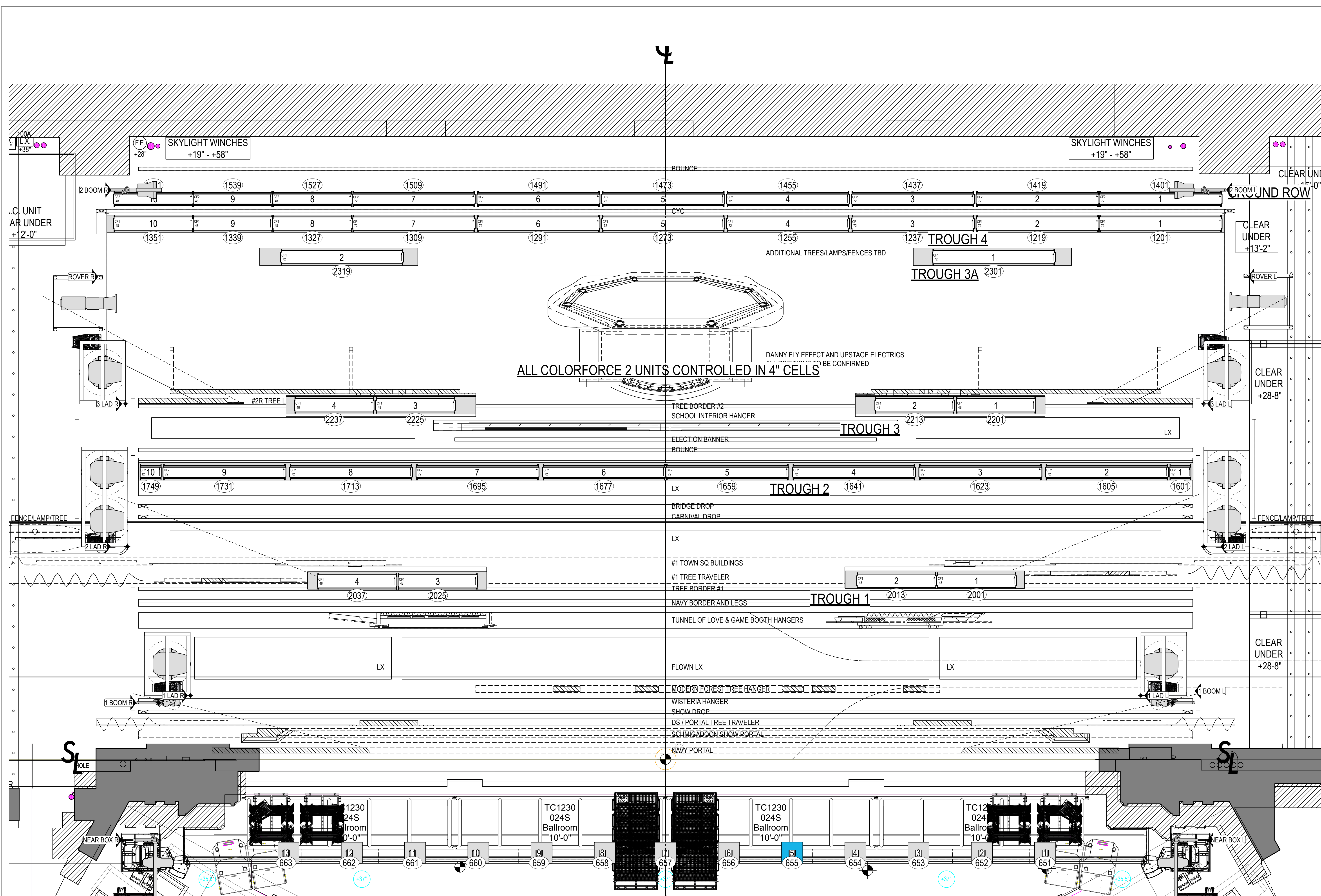
IT MUST BE ENSURED BY PRODUCTION MANAGER & PRODUCTION ELECTRICIAN THAT ALL ELEMENTS OF THIS DESIGN (INCLUDING ALL SMOKE AND HAZE EFFECTS) COMPLY WITH LOCAL, NATIONAL AND INTERNATIONAL FIRE AND HEALTH & SAFETY REGULATIONS AND THAT THEY ARE NOT HAZARDOUS TO THE HEALTH & WEAR OF EMPLOYEES OR AUDIENCE. IN THE EVENT THAT THE DESIGN IS FOUND NOT TO COMPLY, THE DESIGNER WILL ADJUST THE DESIGN IN CONSULTATION WITH THEM AS NECESSARY.

**SCHMIGADOONI!**

**DIRECTOR** CHRISTOPHER GATELLI  
**CHOREOGRAPHY**  
**MUSIC & LYRICS BOOK** CINCO PAUL  
**BOOK** CINCO PAUL  
**VENUE** NEDERLANDER THEATRE  
 208 W 41ST STREET  
 NEW YORK NY 10036

**SCENIC DESIGN** SCOTT PASK  
**COSTUME DESIGN**  
**LIGHTING DESIGN** DONALD HOLDER

**GENERAL MANAGER**  
**PRODUCTION MANAGER** JUNIPER STREET



**NOTES**

- ALL UNITS ON 18" CENTERS UNLESS NOTED
- TRIM HEIGHTS ARE MEASURED FROM THE HOUSE DECK TO THE HANGING PIPE OR SIDELARM
- DISTANCE FROM CL IS MEASURED TO THE CENTER OF THE PIPE
- DISTANCE FROM PLASTER LINE IS MEASURED TO THE CENTER OF THE PIPE (BOOKS) OR THE CENTER OF THE DS MOST VERTICAL (LADDERS)
- PREPARE SPARE CIRCUITS AT EACH POSITION

- KEY**
- Robe Lighting Pole LX @120 W
  - MAC Ultra Performance Hung @1450 W
  - MAC Viper XP @1640 W
  - MAC ENCORE COLO
  - GLP Impression XS @170 W
  - Marin Mac Aura XB @450 W
  - GLP Impression M4 Bar 20 @450 W
  - ETC S4 ERS ETC 14" @150 W
  - ETC S4 ERS ETC 19" @170 W
  - ETC S4 ERS ETC 24" @190 W
  - ETC S4 ERS ETC 30" @210 W
  - ETC S4 LED S3 Luxr ETC XDLT 14" @150 W
  - ETC S4 LED S3 Luxr ETC XDLT 19" @170 W
  - ETC S4 LED S3 Luxr ETC XDLT 24" @190 W
  - ETC S4 LED S3 Luxr ETC XDLT 30" @210 W
  - ETC 200 V4 (RGB) Seleco 75" @5 W
  - Adria PanelBox @120 W
  - ChromaD Colorflex II 12 @135 W
  - ChromaD Colorflex II 12 @135 W
  - ChromaD Colorflex II 72 @600 W

**TYPICAL**

**LIGHTING DESIGN**  
 DONALD HOLDER  
 912-297-3443  
 DHOLDERLIGHTING@GMAIL.COM

**ASSOCIATE**  
 NICK SOLYOM  
 (914) 823-7154  
 NICK@SOLYOMDESIGN.COM

THE DRAWING AND INFORMATION CONTAINED HEREIN REPRESENTS VISUAL CONCEPTS AND CONSTRUCTION SUGGESTIONS ONLY. THE DESIGNER IS UNQUALIFIED TO DETERMINE THE STRUCTURAL APPROPRIATENESS OF THIS DESIGN AND WILL NOT ASSUME RESPONSIBILITY FOR IMPROPER ENGINEERING, ELECTRICAL, OR CONSTRUCTION HANDLING, OR USE OF THIS DESIGN. ALL MATERIALS, CONSTRUCTION, AND WIRING THROUGHOUT SHALL COMPLY WITH THE MOST STRINGENT OF FEDERAL, STATE, AND LOCAL FIRE AND SAFETY CODES.

IT MUST BE ENSURED BY PRODUCTION MANAGER & PRODUCTION ELECTRICIAN THAT ALL ELEMENTS OF THIS DESIGN (INCLUDING ALL SMOKE AND HAZE EFFECTS) COMPLY WITH LOCAL, NATIONAL AND INTERNATIONAL FIRE AND HEALTH & SAFETY REGULATIONS AND THAT THEY ARE NOT HAZARDOUS TO THE HEALTH & WELFARE OF EMPLOYEES OR AUDIENCE. IN THE EVENT THAT THE DESIGN IS FOUND NOT TO COMPLY, THE DESIGNER WILL ADJUST THE DESIGN IN CONSULTATION WITH THEM AS NECESSARY.

**SCHMIGADOON!**

**DIRECTOR** CHRISTOPHER GATELLI  
**CHOREOGRAPHY**  
**MUSIC & LYRICS** CINCO PAUL  
**BOOK** CINCO PAUL  
**VENUE** NEDERLANDER THEATRE  
 208 W 41ST STREET  
 NEW YORK, NY 10036

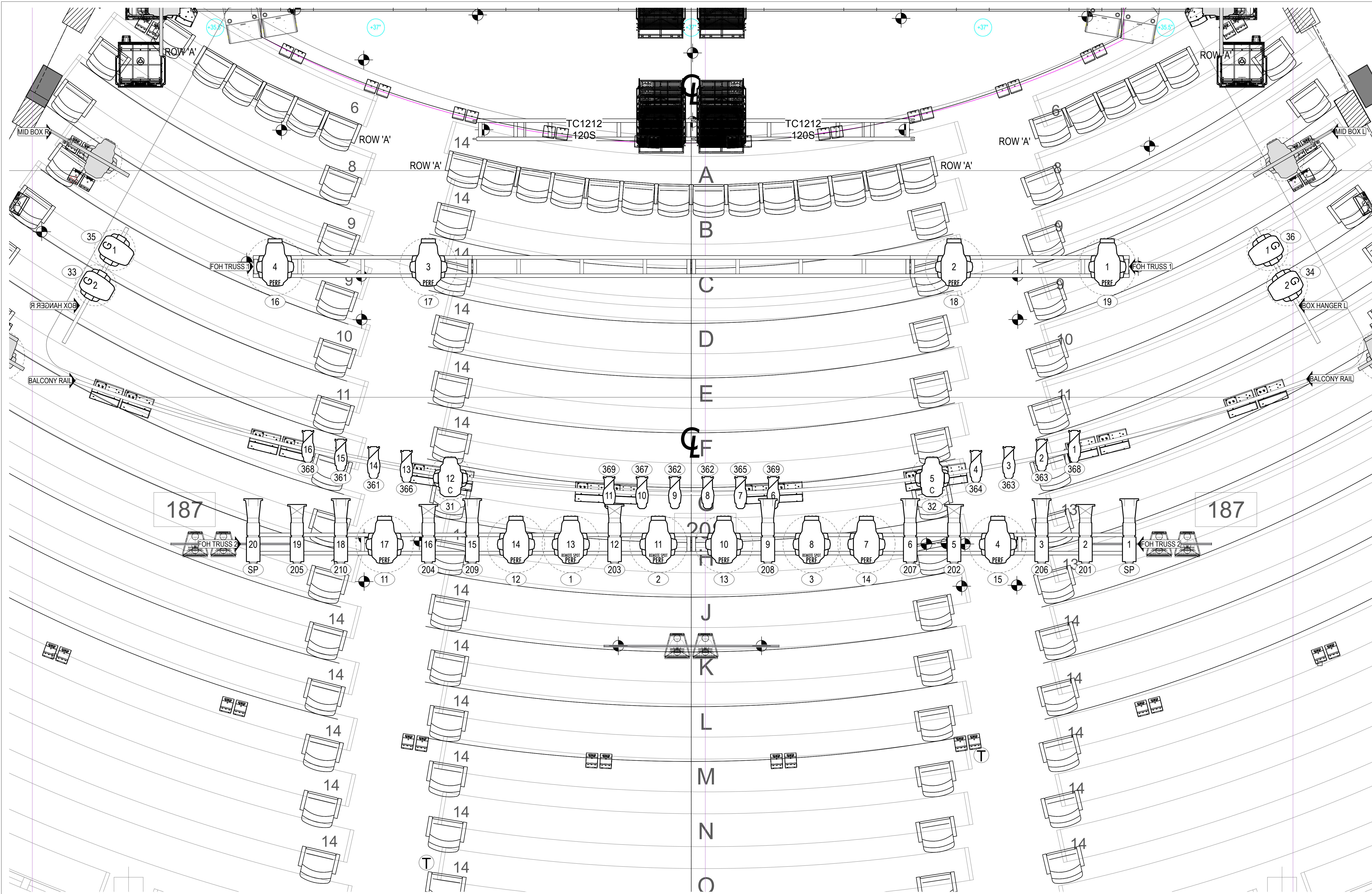
**SCENIC DESIGN** SCOTT PASK  
**COSTUME DESIGN**  
**LIGHTING DESIGN** DONALD HOLDER

**GENERAL MANAGER**  
**PRODUCTION MANAGER** JUNIPER STREET

**LX PLOT 1/2 DECK**

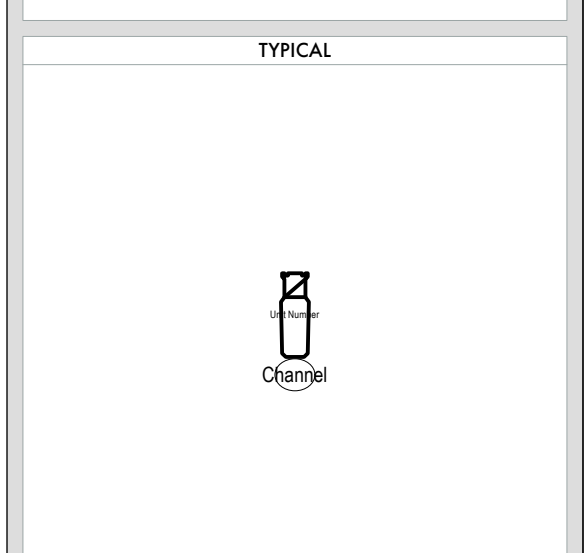
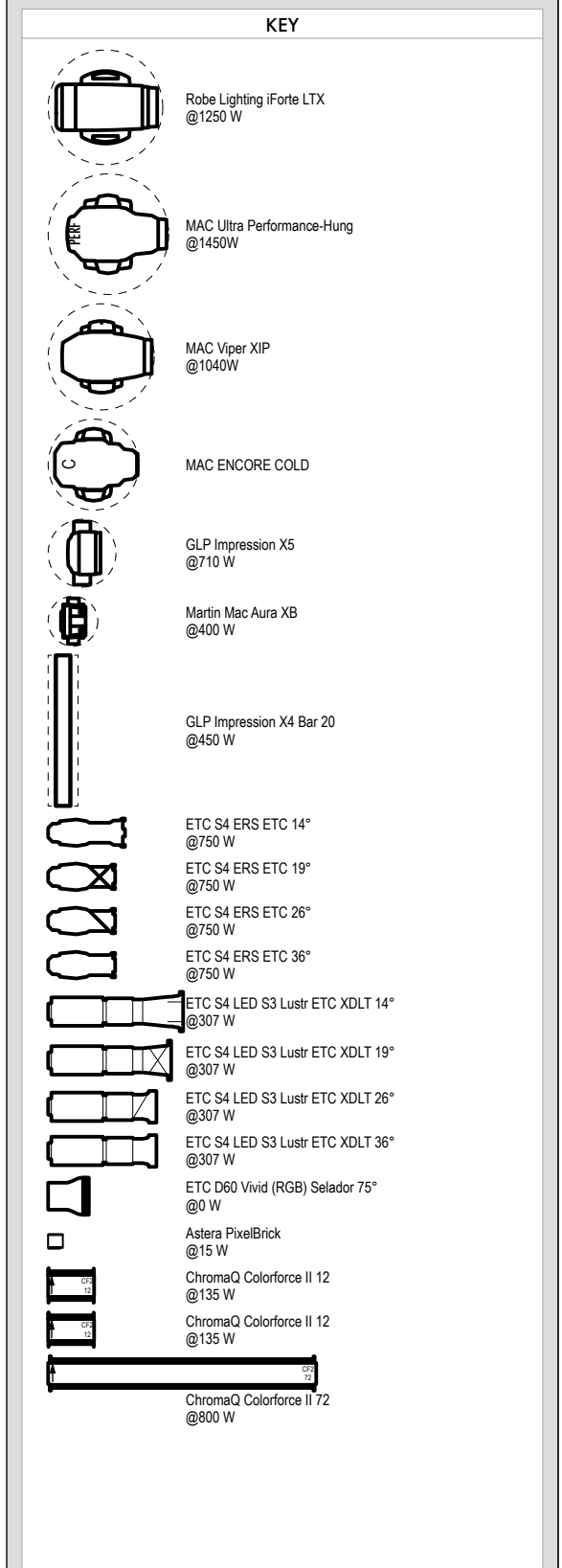
SCALE: 1/24  
 DATE: 2026-01-19  
 DRAWN: NAS

PLATE: 03 OF 8



**NOTES**

- ALL UNITS ON 18" CENTERS UNLESS NOTED
- TRIM HEIGHTS ARE MEASURED FROM THE HOUSE DECK TO THE HANGING PIPE OR SIDARM
- DISTANCE FROM CL IS MEASURED TO THE CENTER OF THE PIPE
- DISTANCE FROM PLASTER LINE IS MEASURED TO THE CENTER OF THE PIPE (BOOKS) OR THE CENTER OF THE DS MOST VERTICAL (LADDERS)
- PREPARE SPARE CIRCUITS AT EACH POSITION



**LIGHTING DESIGN**  
**DONALD HOLDER**  
 917-297-3441  
 DHOLDERLIGHTING@GMAIL.COM

**ASSOCIATE**  
**NICK SOLYOM**  
 (914) 823-7154  
 NICK@SOLYOMDESIGN.COM

THE DRAWING AND INFORMATION CONTAINED HEREIN REPRESENTS VISUAL CONCEPTS AND CONSTRUCTION SUGGESTIONS ONLY. THE DESIGNER IS UNQUALIFIED TO DETERMINE THE STRUCTURAL APPROPRIATENESS OF THIS DESIGN AND WILL NOT ASSUME RESPONSIBILITY FOR IMPROPER ENGINEERING, ELECTRIFICATION, CONSTRUCTION, HANDLING, OR USE OF THIS DESIGN. ALL MATERIALS, CONSTRUCTION, AND WIRING THROUGHOUT SHALL COMPLY WITH THE MOST STRINGENT OF FEDERAL, STATE, AND LOCAL FIRE AND SAFETY CODES.

IT MUST BE ENSURED BY PRODUCTION MANAGER & PRODUCTION ELECTRICIAN THAT ALL ELEMENTS OF THIS DESIGN (INCLUDING ALL SMOKE AND HAZE EFFECTS) COMPLY WITH LOCAL, NATIONAL AND INTERNATIONAL FIRE AND HEALTH & SAFETY REGULATIONS AND THAT THEY ARE NOT HAZARDOUS TO THE HEALTH & WEAR OF EMPLOYEES OR AUDIENCE. IN THE EVENT THAT THE DESIGN IS FOUND NOT TO COMPLY, THE DESIGNER WILL ADJUST THE DESIGN IN CONSULTATION WITH THEM AS NECESSARY.



**DIRECTOR** CHRISTOPHER GATTELLI  
**CHOREOGRAPHY**  
**MUSIC & LYRICS** CINCO PAUL  
**BOOK** CINCO PAUL  
**VENUE** NEDERLANDER THEATRE  
 208 W 41ST STREET  
 NEW YORK NY 10036

**SCENIC DESIGN** SCOTT PASK  
**COSTUME DESIGN**  
**LIGHTING DESIGN** DONALD HOLDER

**GENERAL MANAGER**  
**PRODUCTION MANAGER** JUNIPER STREET

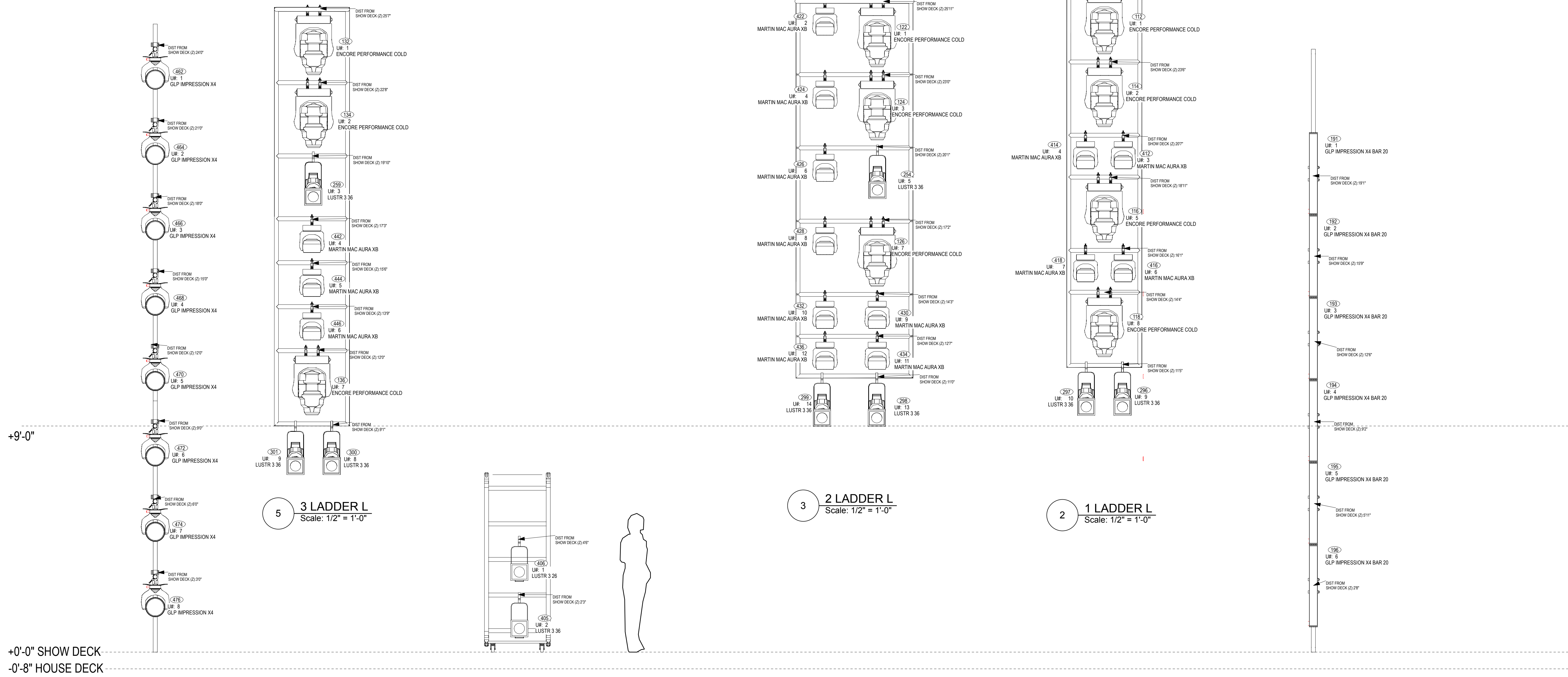
**LX PLOT 1/2 ABOVE FOH**

SCALE: 1/24 PLATE: 04 OF 8  
 DATE: 2026-01-19  
 DRAWN: NAS



# UPSTAGE

# DOWNSTAGE



5 3 LADDER L  
Scale: 1/2" = 1'-0"

3 2 LADDER L  
Scale: 1/2" = 1'-0"

2 1 LADDER L  
Scale: 1/2" = 1'-0"

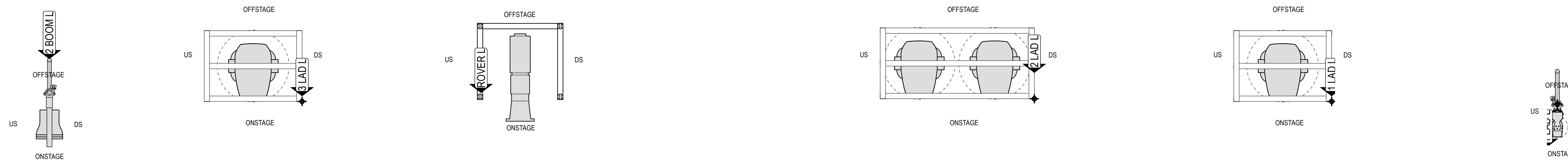
6 2 BOOM L  
Scale: 1/2" = 1'-0"

4 ROVER L  
Scale: 1/2" = 1'-0"

1 1 BOOM L  
Scale: 1/2" = 1'-0"

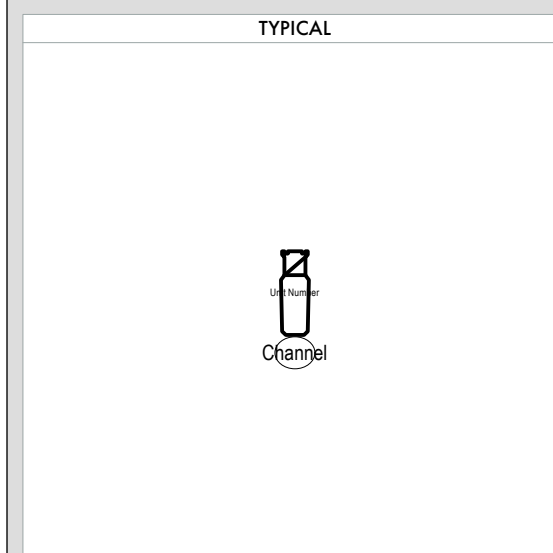
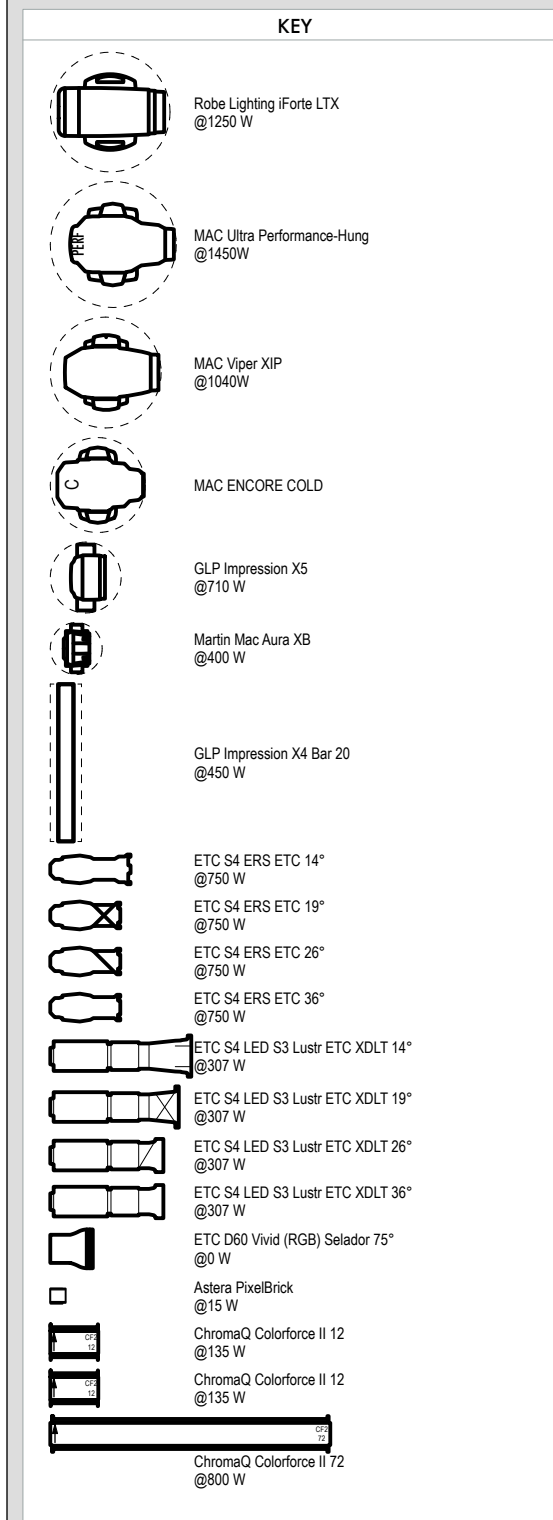
# UPSTAGE

# DOWNSTAGE



**NOTES**

- ALL UNITS ON 18" CENTERS UNLESS NOTED
- TRIM HEIGHTS ARE MEASURED FROM THE HOUSE DECK TO THE HANGING PIPE OR SIDEARM
- DISTANCE FROM CL IS MEASURED TO THE CENTER OF THE PIPE
- DISTANCE FROM PLASTER LINE IS MEASURED TO THE CENTER OF THE PIPE (BOOMS) OR THE CENTER OF THE DS MOST VERTICAL (LADDERS)
- PREPARE SPARE CIRCUITS AT EACH POSITION



**LIGHTING DESIGN**  
DONALD HOLDER  
917-297-3444  
DHOLDERLIGHTING@GMAIL.COM

**ASSOCIATE**  
NICK SLYOM  
(818) 823-7154  
NICK@SOLYOMDESIGN.COM

THE DRAWING AND INFORMATION CONTAINED HEREIN REPRESENTS VISUAL CONCEPTS AND CONSTRUCTION SUGGESTIONS ONLY. THE DESIGNER IS UNQUALIFIED TO DETERMINE THE STRUCTURAL APPROPRIATENESS OF THIS DESIGN AND WILL NOT ASSUME RESPONSIBILITY FOR IMPROPER ENGINEERING, ELECTRICAL, CONSTRUCTION, HANDLING, OR USE OF THIS DESIGN. ALL MATERIALS, CONSTRUCTION, AND WIRING THROUGHOUT SHALL COMPLY WITH THE MOST STRINGENT OF FEDERAL, STATE, AND LOCAL FIRE AND SAFETY CODES.

IT MUST BE ENSURED BY PRODUCTION MANAGER & PRODUCTION ELECTRICIAN THAT ALL ELEMENTS OF THIS DESIGN (INCLUDING ALL SMOKE AND HAZE EFFECTS) COMPLY WITH LOCAL, NATIONAL AND INTERNATIONAL FIRE AND HEALTH & SAFETY REGULATIONS AND THAT THEY DO NOT HAZARD TO THE HEALTH & WELFARE OF EMPLOYEES OR AUDIENCE. IN THE EVENT THAT THE DESIGN IS FOUND NOT TO COMPLY, THE DESIGNER WILL ADJUST THE DESIGN IN CONSULTATION WITH THEM AS NECESSARY.



**DIRECTOR** CHRISTOPHER GATELLI  
**CHOREOGRAPHY**  
**MUSIC & LYRICS** CINCO PAUL  
**BOOK** CINCO PAUL  
**VENUE** HEDERLANDER THEATRE  
208 W 41ST STREET  
NEW YORK NY 10036  
**SCENIC DESIGN** SCOTT PASK  
**COSTUME DESIGN**  
**LIGHTING DESIGN** DONALD HOLDER  
**GENERAL MANAGER**  
**PRODUCTION MANAGER** JUNIPER STREET

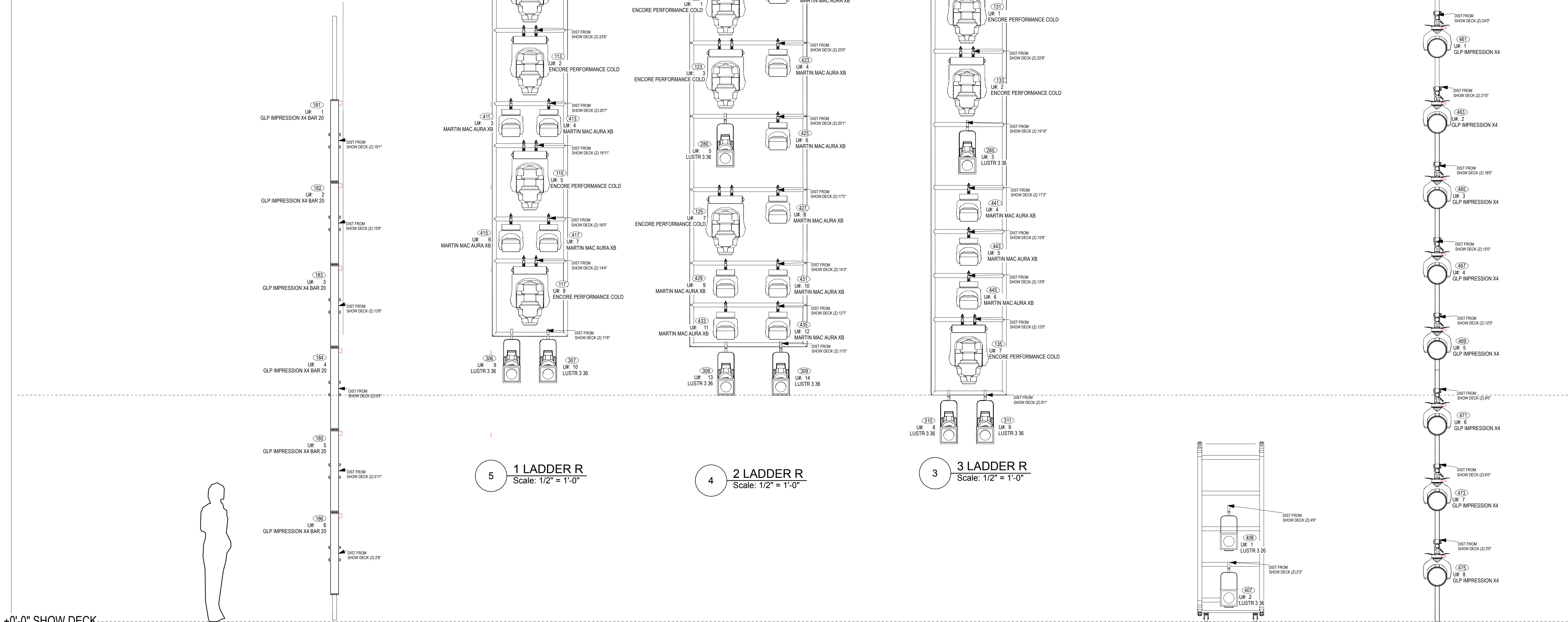
**LX PLOT 1/2 LADDERS SL**

SCALE: AS NOTED  
DATE: 2026-01-19  
DRAWN: NAS

PLATE: 06 OF 8

# DOWNSTAGE

# UPSTAGE

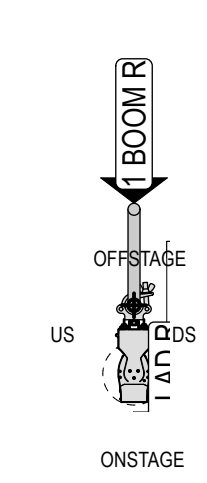


+0'-0" SHOW DECK  
-0'-8" HOUSE DECK

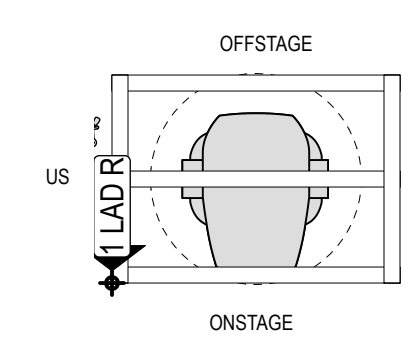
# DOWNSTAGE

# UPSTAGE

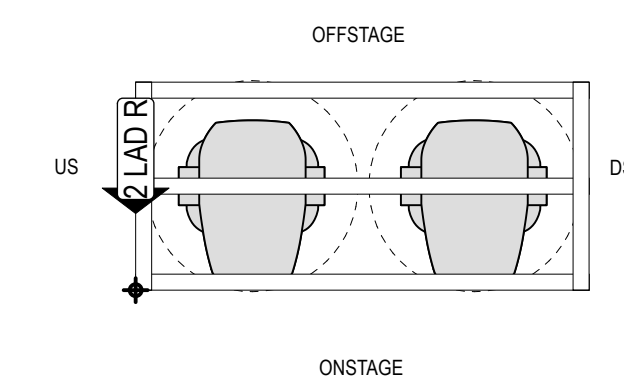
6 1 BOOM R  
Scale: 1/2" = 1'-0"



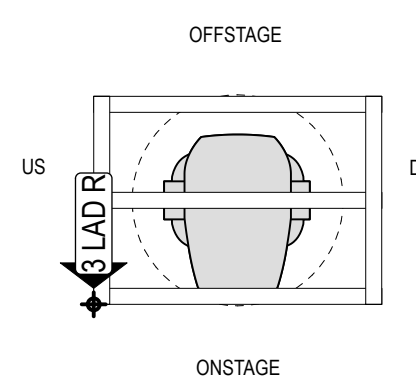
5 1 LADDER R  
Scale: 1/2" = 1'-0"



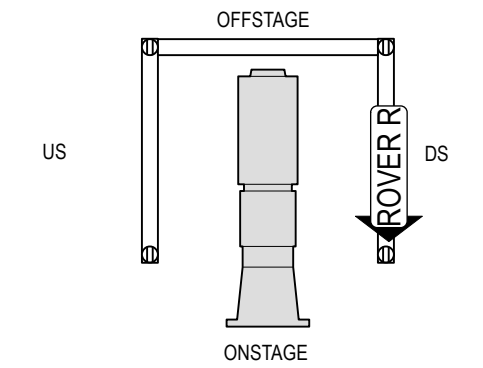
4 2 LADDER R  
Scale: 1/2" = 1'-0"



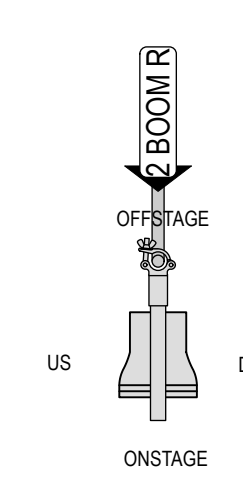
3 3 LADDER R  
Scale: 1/2" = 1'-0"



2 ROVER R  
Scale: 1/2" = 1'-0"



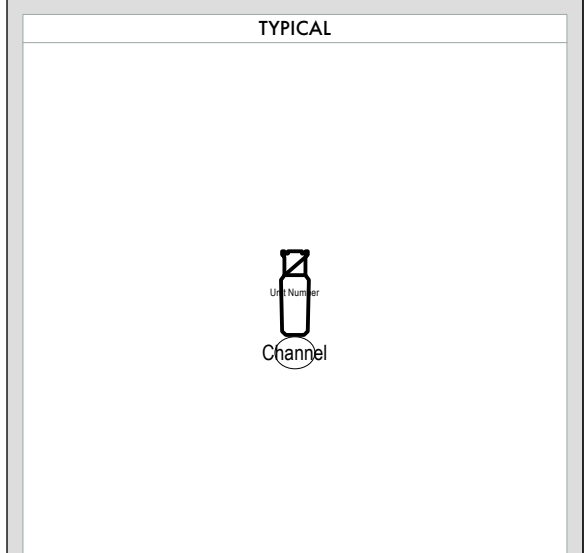
1 2 BOOM R  
Scale: 1/2" = 1'-0"



**NOTES**  
- ALL UNITS ON 18" CENTERS UNLESS NOTED  
- TRIM HEIGHTS ARE MEASURED FROM THE HOUSE DECK TO THE HANGING PIPE OR SIDELARM  
- DISTANCE FROM CL IS MEASURED TO THE CENTER OF THE PIPE  
- DISTANCE FROM PLASTER LINE IS MEASURED TO THE CENTER OF THE PIPE (BOOKS) OR THE CENTER OF THE DS MOST VERTICAL (LADDERS)  
- PREPARE SPARE CIRCUITS AT EACH POSITION

**KEY**

- Robe Lighting Flore LX @125 W
- MAC Ultra Performance Hung @1450 W
- MAC Viper XP @1540 W
- MAC ENCORE COLD
- GLP Impression XS @170 W
- Martin Mac Aura XB @450 W
- GLP Impression X4 Bar 20 @450 W
- ETC S4 ERS ETC 14" @170 W
- ETC S4 ERS ETC 19" @170 W
- ETC S4 ERS ETC 26" @150 W
- ETC S4 ERS ETC 36" @170 W
- ETC S4 LED S3 Lustr ETC XDLT 14" @307 W
- ETC S4 LED S3 Lustr ETC XDLT 19" @307 W
- ETC S4 LED S3 Lustr ETC XDLT 26" @307 W
- ETC S4 LED S3 Lustr ETC XDLT 36" @307 W
- ETC 200 (Hx) (RGB) Seleado 75" @5 W
- Adora PinBox @15 W
- ChromaD Colorbox # 12 @155 W
- ChromaD Colorbox # 12 @155 W
- ChromaD Colorbox # 12 @600 W



**LIGHTING DESIGN**  
DONALD HOLDER  
917-297-3444  
DHOLDERLIGHTING@GMAIL.COM

**ASSOCIATE**  
NICK SOLYOM  
(914) 823-7154  
NICK@SOLYOMDESIGN.COM

THE DRAWING AND INFORMATION CONTAINED HEREIN REPRESENTS VISUAL CONCEPTS AND CONSTRUCTION SUGGESTIONS ONLY. THE DESIGNER IS UNQUALIFIED TO DETERMINE THE STRUCTURAL APPROPRIATENESS OF THIS DESIGN AND WILL NOT ASSUME RESPONSIBILITY FOR IMPROPER ENGINEERING, ELECTRICAL, CONSTRUCTION, HANDLING, OR USE OF THIS DESIGN. ALL MATERIALS, CONSTRUCTION, AND WIRING THROUGHOUT SHALL COMPLY WITH THE MOST STRINGENT OF FEDERAL, STATE, AND LOCAL FIRE AND SAFETY CODES.

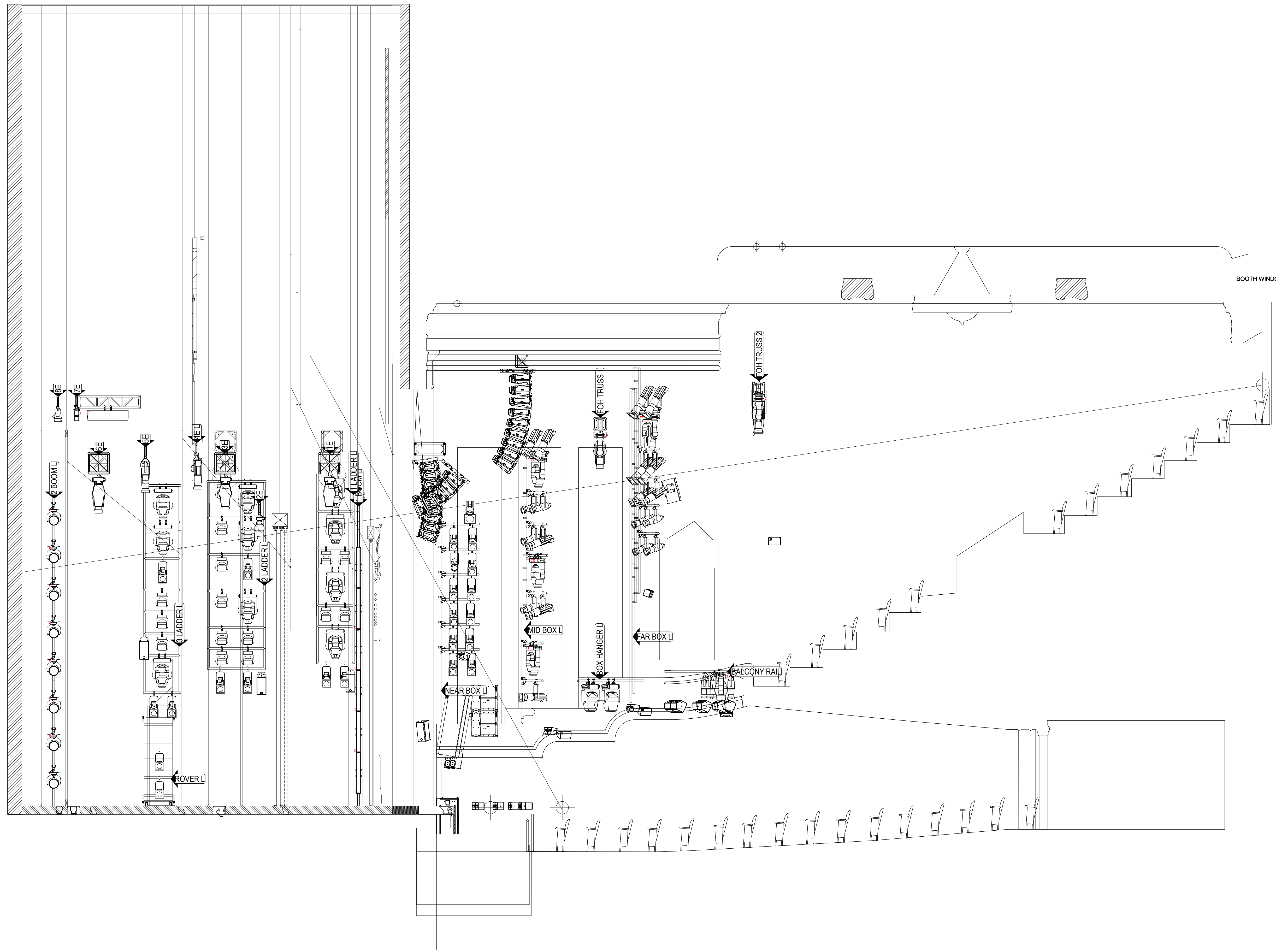
IT MUST BE ENSURED BY PRODUCTION MANAGER & PRODUCTION ELECTRICIAN THAT ALL ELEMENTS OF THIS DESIGN (INCLUDING ALL SMOKE AND HAZE EFFECTS) COMPLY WITH LOCAL, NATIONAL AND INTERNATIONAL FIRE AND HEALTH & SAFETY REGULATIONS AND THAT THEY DO NOT HAZARD TO THE HEALTH & WEAR AND TEAR OF EMPLOYEES OR AUDIENCE. IN THE EVENT THAT THE DESIGN IS FOUND NOT TO COMPLY, THE DESIGNER WILL ADJUST THE DESIGN IN CONSULTATION WITH THEM AS NECESSARY.



**DIRECTOR** CHRISTOPHER GATTELLI  
**CHOREOGRAPHY**  
**MUSIC & LYRICS BOOK** CINCO PAUL  
**CINCO PAUL**  
**VENUE** NEDEBLANDER THEATRE  
208 W 41ST STREET  
NEW YORK NY 10036  
**SCENIC DESIGN** SCOTT PASK  
**COSTUME DESIGN**  
**LIGHTING DESIGN** DONALD HOLDER  
**GENERAL MANAGER**  
**PRODUCTION MANAGER** JUNIPER STREET

**LX PLOT 1/2 LADDERS SR**  
SCALE: AS NOTED  
DATE: 2026-01-19  
DRAWN: NAS

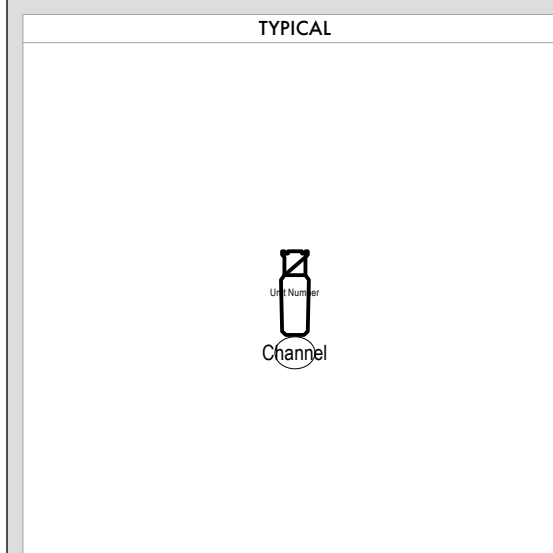
PLATE: **07** OF **8**



**NOTES**

- ALL UNITS ON 18" CENTERS UNLESS NOTED
- TRIM HEIGHTS ARE MEASURED FROM THE HOUSE DECK TO THE HANGING PIPE OR SIDELARM
- DISTANCE FROM CL IS MEASURED TO THE CENTER OF THE PIPE
- DISTANCE FROM PLASTER LINE IS MEASURED TO THE CENTER OF THE PIPE (BOOMS) OR THE CENTER OF THE DS MOST VERTICAL (LADDERS)
- PREPARE SPARE CIRCUITS AT EACH POSITION

- KEY**
- Bobo Lighting Flore LTX @120 W
  - MAC Ultra Performance Hung @1450 W
  - MAC Viper XP @1540 W
  - MAC ENCORE COLO
  - GLP Impression XS @70 W
  - Martin Mac Aura XB @400 W
  - GLP Impression X4 Bar 20 @400 W
  - ETC S4 ERS ETC 14" @70 W
  - ETC S4 ERS ETC 19" @70 W
  - ETC S4 ERS ETC 26" @50 W
  - ETC S4 ERS ETC 30" @50 W
  - ETC S4 LED S3 Luvr ETC XDLT 14" @57 W
  - ETC S4 LED S3 Luvr ETC XDLT 19" @57 W
  - ETC S4 LED S3 Luvr ETC XDLT 26" @57 W
  - ETC S4 LED S3 Luvr ETC XDLT 30" @57 W
  - ETC 200 Vln (RGB) Selector 75" @5 W
  - Adora PinBox @5 W
  - Chroma Colorbox II 12 @15 W
  - Chroma Colorbox II 12 @15 W
  - Chroma Colorbox II 72 @60 W



**LIGHTING DESIGN**  
**DONALD HOLDER**  
 717-797-3441  
 DHOLDERLIGHTING@GMAIL.COM

**ASSOCIATE**  
**NICK SOLYOM**  
 (818) 823-7154  
 NICK@SOLYOMDESIGN.COM



THE DRAWING AND INFORMATION CONTAINED HEREIN REPRESENTS VISUAL CONCEPTS AND CONSTRUCTION SUGGESTIONS ONLY. THE DESIGNER IS UNQUALIFIED TO DETERMINE THE STRUCTURAL APPROPRIATENESS OF THIS DESIGN AND WILL NOT ASSUME RESPONSIBILITY FOR IMPROPER ENGINEERING, ELECTRIFICATION, CONSTRUCTION, HANDLING, OR USE OF THIS DESIGN. ALL MATERIALS, CONSTRUCTION, AND WIRING THROUGHOUT SHALL COMPLY WITH THE MOST STRINGENT OF FEDERAL, STATE, AND LOCAL FIRE AND SAFETY CODES.

IT MUST BE ENSURED BY PRODUCTION MANAGER & PRODUCTION ELECTRICIAN THAT ALL ELEMENTS OF THIS DESIGN (INCLUDING ALL SMOKE AND HAZE EFFECTS) COMPLY WITH LOCAL, NATIONAL AND INTERNATIONAL FIRE AND HEALTH & SAFETY REGULATIONS AND THAT THEY ARE NOT HAZARDOUS TO THE HEALTH & WELFARE OF EMPLOYEES OR AUDIENCE. IN THE EVENT THAT THE DESIGN IS FOUND NOT TO COMPLY, THE DESIGNER WILL ADJUST THE DESIGN IN CONSULTATION WITH THEM AS NECESSARY.

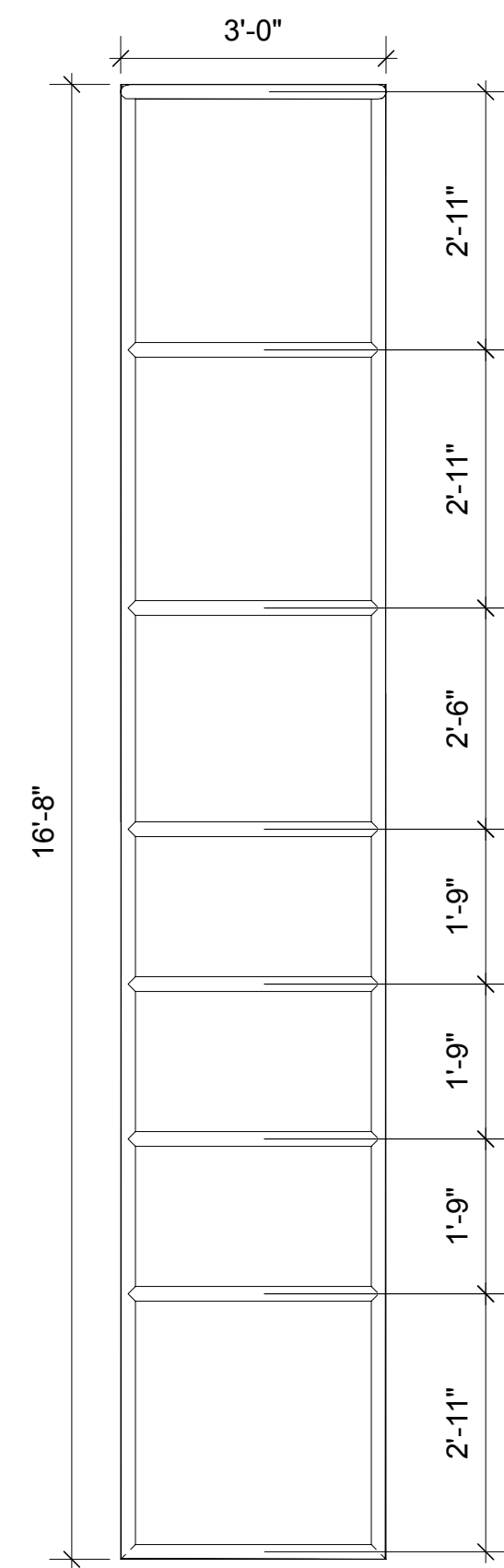
**SCHMIGADOONI!**

**DIRECTOR** CHRISTOPHER GATTELLI  
**CHOREOGRAPHY**  
**MUSIC & LYRICS** CINCO PAUL  
**BOOK** CINCO PAUL  
**VENUE** HEDERLANDER THEATRE  
 208 W 41ST STREET  
 NEW YORK NY 10036  
**SCENIC DESIGN** SCOTT PASK  
**COSTUME DESIGN**  
**LIGHTING DESIGN** DONALD HOLDER  
**GENERAL MANAGER**  
**PRODUCTION MANAGER** JUNIPER STREET

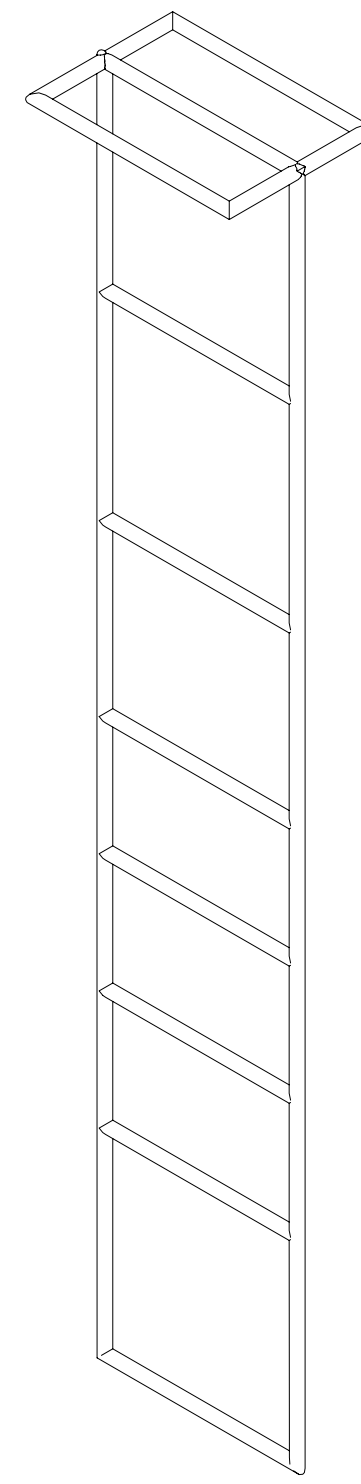
**LX PLOT 1/4 SECTION**

SCALE: 1:48  
 DATE: 2026-01-19  
 DRAWN: NAS

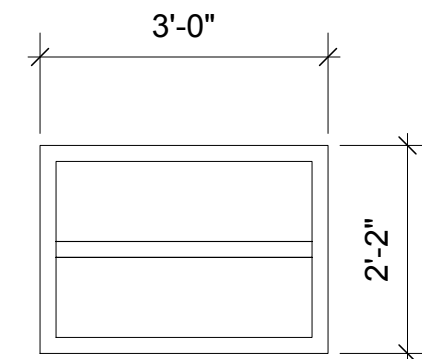
PLATE:  
**08 OF 8**



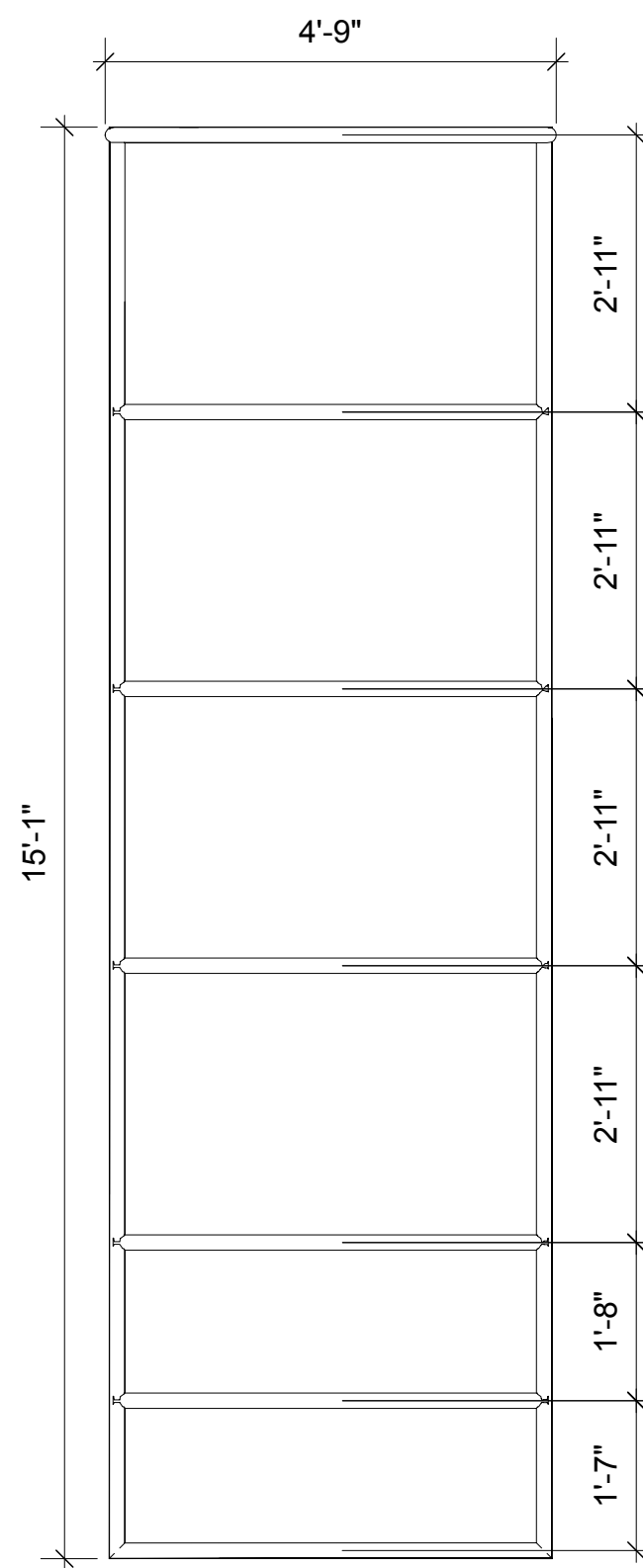
8 3 LADDER L&R FRONT  
Scale: 1/2" = 1'-0"



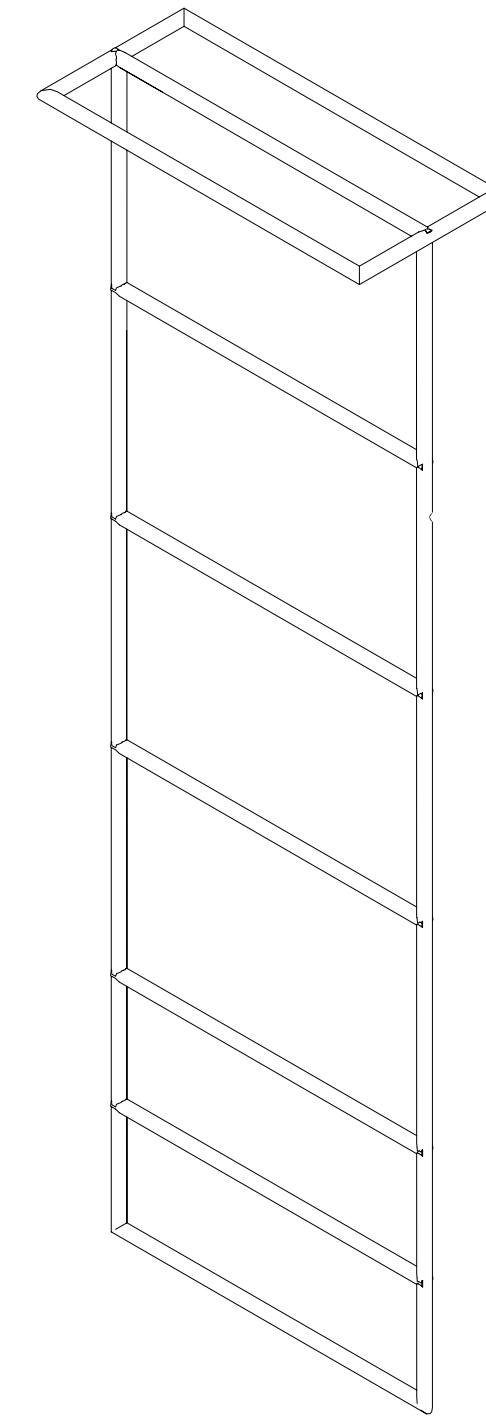
9 3 LADDER L&R ISO  
Scale: 1/2" = 1'-0"



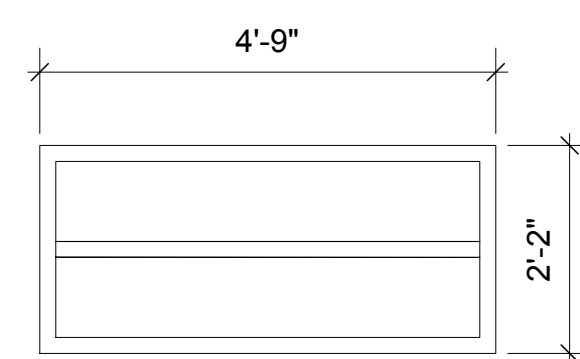
7 3 LADDER L&R TOP  
Scale: 1/2" = 1'-0"



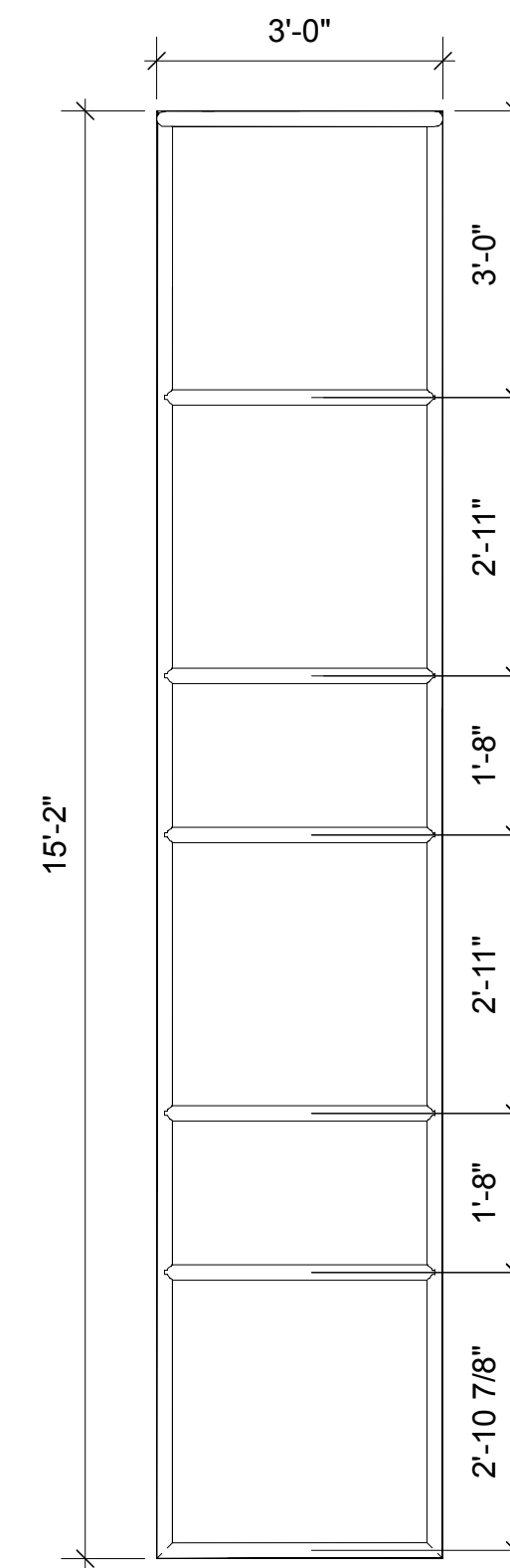
5 2 LADDER L&R FRONT  
Scale: 1/2" = 1'-0"



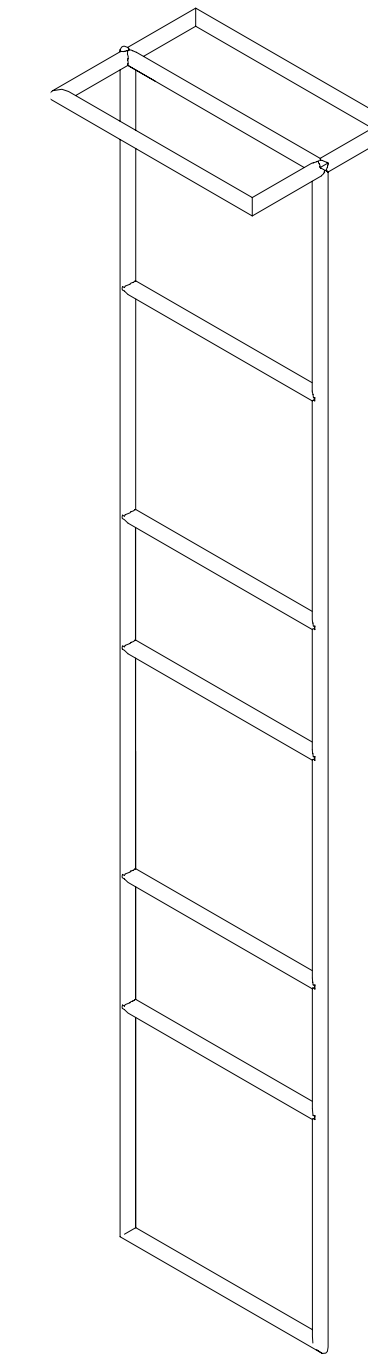
6 2 LADDER L&R ISO  
Scale: 1/2" = 1'-0"



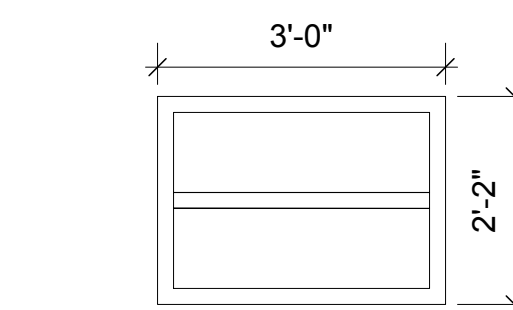
4 2 LADDER L&R TOP  
Scale: 1/2" = 1'-0"



2 1 LADDER L&R FRONT  
Scale: 1/2" = 1'-0"



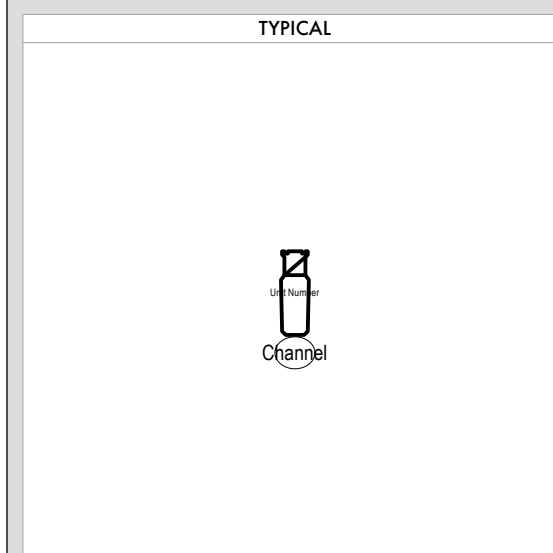
3 1 LADDER L&R ISO  
Scale: 1/2" = 1'-0"



1 1 LADDER L&R TOP  
Scale: 1/2" = 1'-0"

**NOTES**  
 - ALL UNITS ON 18" CENTERS UNLESS NOTED  
 - TRIM HEIGHTS ARE MEASURED FROM THE HOUSE DECK TO THE HANGING PIPE OR SIDELARM  
 - DISTANCE FROM CL IS MEASURED TO THE CENTER OF THE PIPE  
 - DISTANCE FROM PLASTER LINE IS MEASURED TO THE CENTER OF THE PIPE (BOOKS) OR THE CENTER OF THE DS MOST VERTICAL (LADDERS)  
 - PREPARE SPARE CIRCUITS AT EACH POSITION

- KEY**
- Rode Lighting Flore LTX @250 W
  - MAC Ultra Performance Hung @1450 W
  - MAC Viper XP @1540 W
  - MAC ENCORE COLO
  - GLP Ingression XS @70 W
  - Martin Mac Aura XB @60 W
  - GLP Ingression X4 Bar 20 @60 W
  - ETC S4 ERS ETC 14" @70 W
  - ETC S4 ERS ETC 19" @70 W
  - ETC S4 ERS ETC 26" @70 W
  - ETC S4 ERS ETC 30" @70 W
  - ETC S4 LED S3 Luvr ETC XDLT 14" @57 W
  - ETC S4 LED S3 Luvr ETC XDLT 19" @57 W
  - ETC S4 LED S3 Luvr ETC XDLT 26" @57 W
  - ETC S4 LED S3 Luvr ETC XDLT 30" @57 W
  - ETC 200 Vln4 (RGB) Selector 75" @5 W
  - Adora PanelBox @5 W
  - ChromaD Colorbox # 12 @15 W
  - ChromaD Colorbox # 12 @15 W
  - ChromaD Colorbox # 12 @15 W
  - ChromaD Colorbox # 12 @15 W



**LIGHTING DESIGN**  
 DONALD HOLDER  
 917-797-3444  
 DHOLDERLIGHTING@GMAIL.COM

**ASSOCIATE**  
 NICK SOLYOM  
 (914) 823-7154  
 NICK@SOLYOMDESIGN.COM

THE DRAWING AND INFORMATION CONTAINED HEREIN REPRESENTS VISUAL CONCEPTS AND CONSTRUCTION SUGGESTIONS ONLY. THE DESIGNER IS UNQUALIFIED TO DETERMINE THE STRUCTURAL APPROPRIATENESS OF THIS DESIGN AND WILL NOT ASSUME RESPONSIBILITY FOR IMPROPER ENGINEERING, ELECTRICAL, CONSTRUCTION, HANDLING, OR USE OF THIS DESIGN. ALL MATERIALS, CONSTRUCTION, AND WIRING THROUGHOUT SHALL COMPLY WITH THE MOST STRINGENT OF FEDERAL, STATE, AND LOCAL FIRE AND SAFETY CODES.

IT MUST BE ENSURED BY PRODUCTION MANAGER & PRODUCTION ELECTRICIAN THAT ALL ELEMENTS OF THIS DESIGN (INCLUDING ALL SMOKE AND HAZE EFFECTS) COMPLY WITH LOCAL, NATIONAL AND INTERNATIONAL FIRE AND HEALTH & SAFETY REGULATIONS AND THAT THEY DO NOT HAZARD TO THE HEALTH & WELFARE OF EMPLOYEES OR AUDIENCE. IN THE EVENT THAT THE DESIGN IS FOUND NOT TO COMPLY, THE DESIGNER WILL ADJUST THE DESIGN IN CONSULTATION WITH THEM AS NECESSARY.



**DIRECTOR** CHRISTOPHER GATELLI  
**CHOREOGRAPHY**  
**MUSIC & LYRICS** CINCO PAUL  
**BOOK** CINCO PAUL  
**VENUE** NEDERLANDER THEATRE  
 208 W 41ST STREET  
 NEW YORK NY 10036  
**SCENIC DESIGN** SCOTT PASK  
**COSTUME DESIGN**  
**LIGHTING DESIGN** DONALD HOLDER  
**GENERAL MANAGER**  
**PRODUCTION MANAGER** JUNIPER STREET