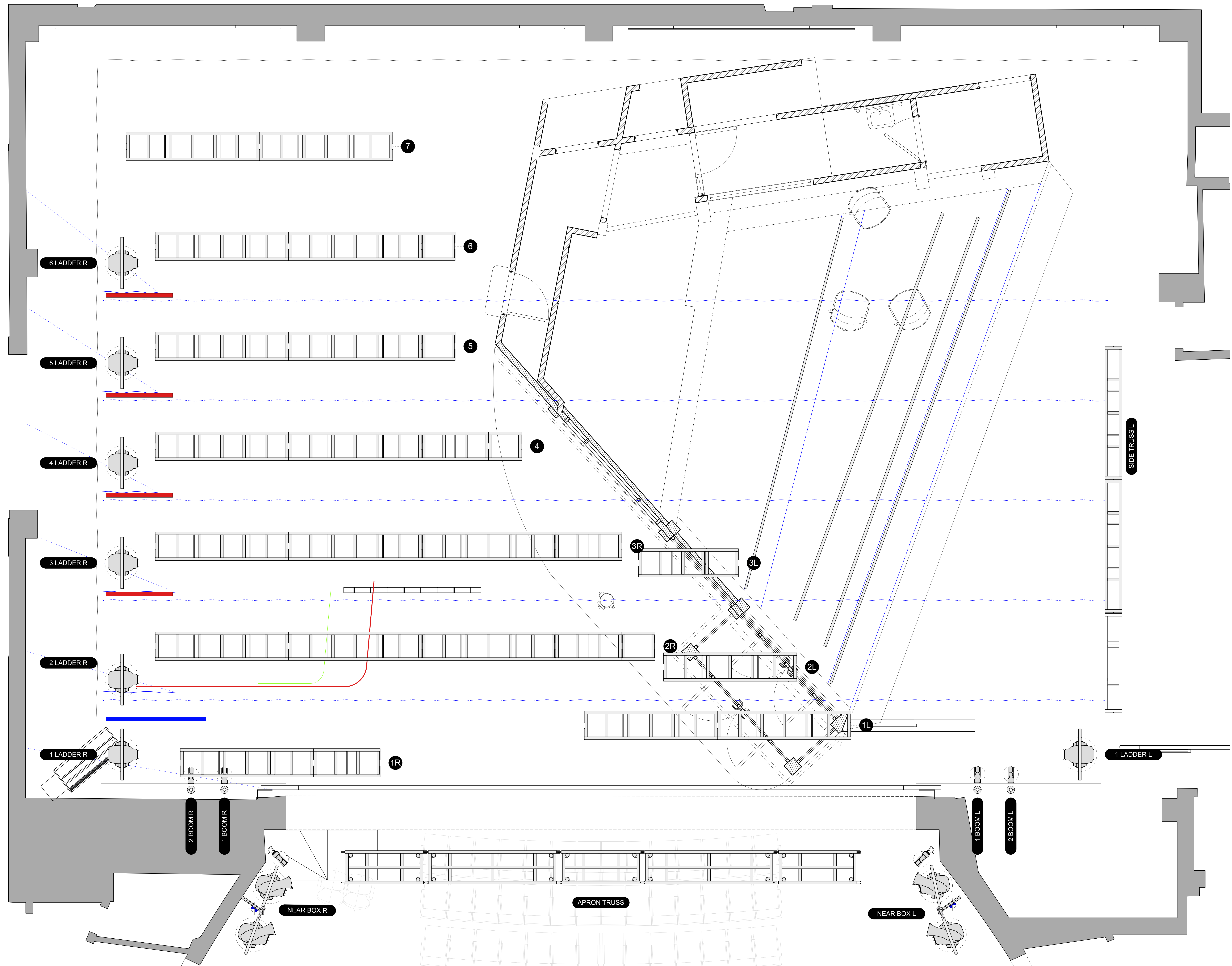


- #7 ELECTRIC
- +21'-6" #6 ELECTRIC
- LEG BORDER
- +21'-6" #5 ELECTRIC
- LEG BORDER
- +21'-6" #4 ELECTRIC
- LEG BORDER
- +21'-6" #3 ELECTRIC R
- +21'-0" #3 ELECTRIC L
- BROOKLYN SIGN
- LEG BORDER
- +21'-6" #2 ELECTRIC R
- +21'-0" #2 ELECTRIC L
- LEG BORDER
- +22'-6" #1 ELECTRIC L
- VAR. LIQUOR STORE FLOROS
- +20'-6" #1 ELECTRIC R
- SHOW PORTAL
- PLASTER
- TRIM
- NAME
- DIST. US
- ELECTRIFIED PIECE



- KEY:**
- Martin MAC Encore Performance WRM
 - Martin MAC Ultra Performance
 - GLP Impression X5 Compact
 - Ayrton Diablo
 - GLP Impression X5 Bar 1000
 - S4-14 LED S2 Lustr
 - S4-19 LED S2 Lustr
 - S4-26 LED S2 Lustr
 - S4-36 LED S2 Lustr
 - S4-50 LED S2 Lustr
 - ETC ColorSource Fresnel V
 - VDO Scepton XB 1000mm

- LEGEND:**
- MANS TAILS
 - SOFT FOCUS DIFFUSOR
 - A-SIZE TEMPLATE HOLDER
 - UNIT NUMBER
 - DIMMER DOUBLE
 - CHANNEL NUMBER

THIS DRAWING REPRESENTS VISUAL CONCEPTS AND CONSTRUCTION SUGGESTIONS ONLY.

The Designer is unqualified to determine the structural or electrical appropriateness of this design, and will not assume responsibility for improper engineering, construction, handling, or use. All materials and construction must comply with the most stringent applicable Federal and Local Fire, Safety, Energy, and Environmental Codes.

©2025/2026 ISABELLA BYRD

LIGHTING BY
ISABELLA BYRD
 ASSOCIATE DESIGNERS
PAUL TOBEN
 Cell: +1 650-269-0715
 AND
TIMOTHY REED
 Cell: +1 801-244-5186

REV	REVISION	DATE
△	FOH SECTION	2026-02-02
△	FOH REDO	2026-01-14
△	FANS & ATMOS	2026-01-12
△	SET ELECTRICS	2026-12-22
△	FIRST ISSUE	2026-12-08
△	REVISION	DATE

WARNER BROTHERS THEATRE VENTURES, SUE WAGNER, JOHN JOHNSON, PATRICK CATULLO, ET AL. PRESENT

DOG DAY AFTERNOON

AUGUST WILSON THEATER
 BROADWAY

DIRECTED BY: RUPERT GOOLD
 SCENERY BY: DAVID KORINS
 SOUND BY: CODY SPENCER
 LIGHTING BY: ISABELLA BYRD

RIGGING

SCALE: 1/2" = 1'-0" EXCEPT WHERE NOTED

DATE: 2026-02-02

DRAWN: PT

7
OF 7