

- KEY:**
- Martin MAC Encore Performance WRM
 - Martin MAC Ultra Performance
 - GLP Impression X5 Compact
 - Ayrton Diablo
 - GLP Impression X5 Bar 1000
 - S4-14 LED S2 Lustr
 - S4-19 LED S2 Lustr
 - S4-26 LED S2 Lustr
 - S4-36 LED S2 Lustr
 - S4-50 LED S2 Lustr
 - ETC ColorSource Fresnel V
 - VDO Sceptron XB 1000mm

- LEGEND:**
- SOFT FOCUS DIFFUSOR
 - A-SIZE TEMPLATE
 - HOLDER
 - UNIT NUMBER
 - DIMMER DOUBLE
 - CHANNEL NUMBER
 - MANS TAILS

THIS DRAWING REPRESENTS VISUAL CONCEPTS AND CONSTRUCTION SUGGESTIONS ONLY.

The Designer is unqualified to determine the structural or electrical appropriateness of this design, and will not assume responsibility for improper engineering, construction, handling, or use. All materials and construction must comply with the most stringent applicable Federal and Local Fire, Safety, Energy, and Environmental Codes.

©2025/2026 ISABELLA BYRD

LIGHTING BY
ISABELLA BYRD
 ASSOCIATE DESIGNERS
PAUL TOBEN
 Cell: +1 650-269-0715
 AND
TIMOTHY REED
 Cell: +1 801-244-5186

REV	REVISION	DATE
FOH SECTION		2026-02-02
FOH REDO		2026-01-14
FANS & ATMOS		2026-01-12
SET ELECTRICS		2026-12-22
FIRST ISSUE		2025-12-08

WARNER BROTHERS THEATRE VENTURES, SUE WAGNER, JOHN JOHNSON, PATRICK CATULLO, ET AL. PRESENT

DOG DAY AFTERNOON

AUGUST WILSON THEATER
 BROADWAY

DIRECTED BY: RUPERT GOOLD
 SCENERY BY: DAVID KORINS
 SOUND BY: CODY SPENCER
 LIGHTING BY: ISABELLA BYRD

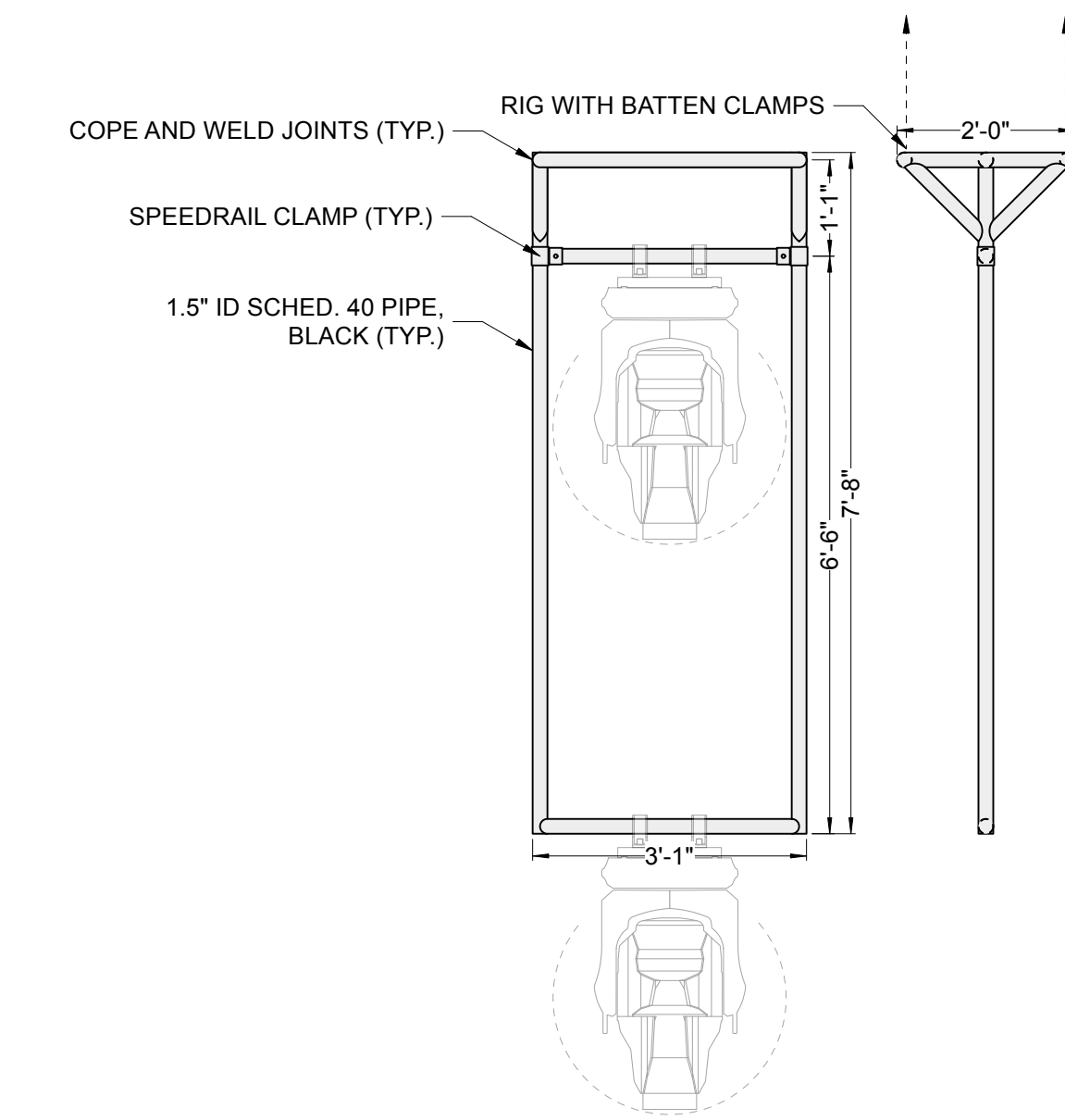
SIDELIGHT

SCALE: 1/2" = 1'-0" EXCEPT WHERE NOTED

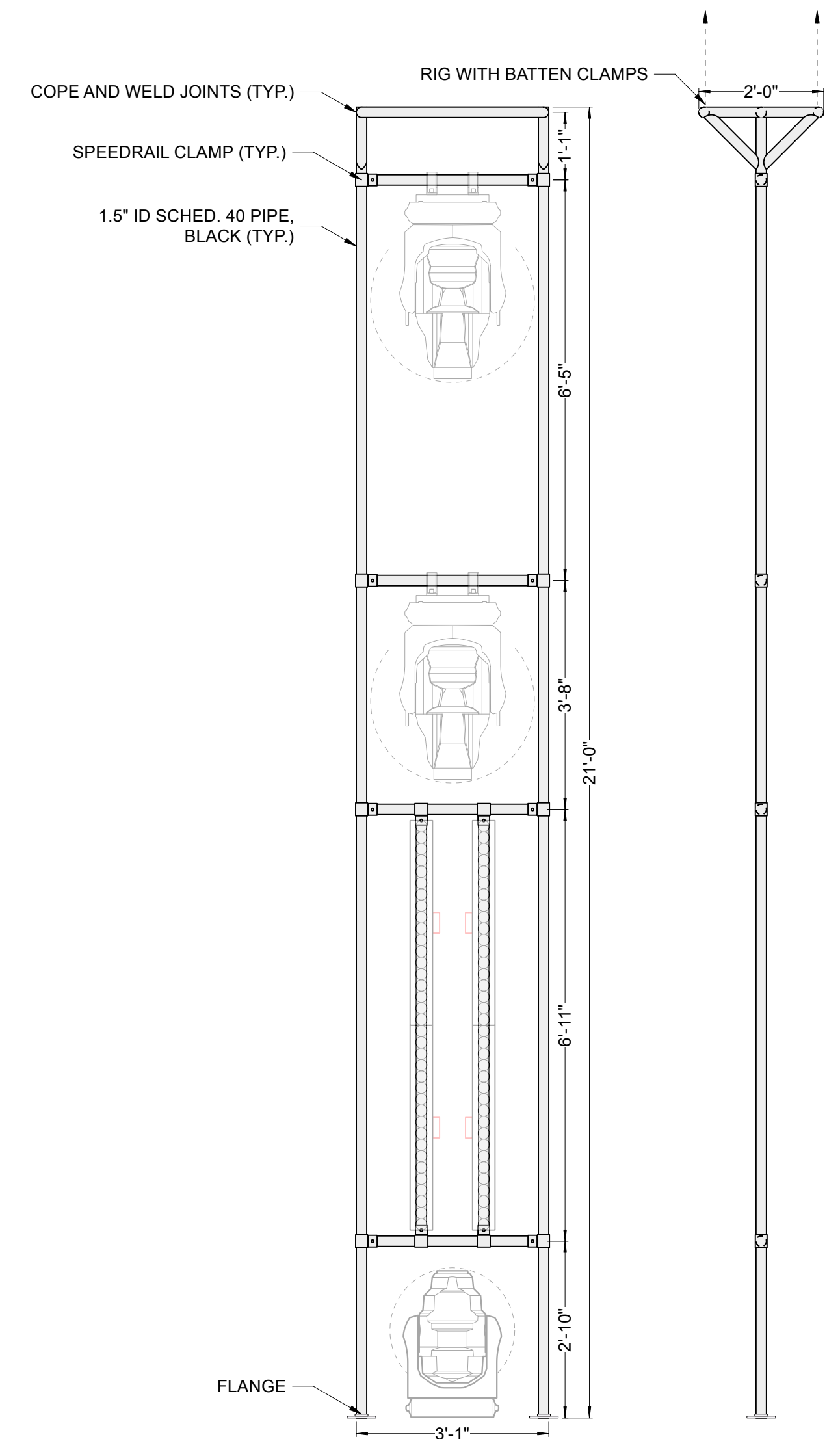
DATE: 2026-02-02

DRAWN: PT

3
OF 7



CUSTOM "#1 LADDER"
 BUILD (2) REVERSE AND REPEAT. PAINT FLAT BLACK



CUSTOM "#2 LADDER"
 BUILD (5). PAINT FLAT BLACK