

THE KENSINGTON DUAL-PITCH CANOPY

Data Sheet

The Kensington Dual-Pitch is a striking freestanding canopy that is ideal for many settings and fits in effortlessly with new and well established buildings alike.

Dimensions:

Length:	Unlimited
Width (Projection):	Up to 6 metres in total
Height:	To your specification
Spacing Between Posts:	Up to 6 metres



0800 389 9072

www.ablecanopies.co.uk
sales@ablecanopies.co.uk

Features:

Wall Mounted or Freestanding:	Freestanding
Suitable for:	Education Hospitality Leisure Retail Commercial Healthcare
Guarantee:	N/A
Life Expectancy:	Up to 25 Years
Maintenance:	Requires only periodic cleaning
Installation Type:	Permanent
Retractable/Collapsible:	No
Method of Fixing:	Posts are installed into the ground with 550mm x 550mm x 20mm thick base plates into pad stones—the dimensions of which depends on the individual installation

Frame Specifications:

Construction Material:	Posts and main frame: 200mm x 200mm x 8mm steel hollow section posts Frame inserts: 180mm x 180mm x 6mm
Guttering:	Aluminium guttering with uPVC downpipes fitted as standard
Frame Finish:	Powder coated Also available galvanised at an additional cost
Colour Options:	Supplied in any standard RAL colour Other RAL colours are available however, they may incur additional costs
Fixings:	316 marine grade stainless steel fixings

Roof Specifications:

Roof Frame:	Steel roof frame with 80mm x 40mm x 5mm steel roof bars with 80mm x 80mm x 5mm aluminium rafter bars
Roof Covering:	Choice of 10mm solid polycarbonate, 16mm structured polycarbonate, 10mm toughened glass or 10.8mm laminated glass
UV Protection:	The polycarbonate offers over 98% This also means the roof panels will not turn yellow over time due to UV degradation
Light Transmission:	The 16mm polycarbonate offers 73% for clear panels and 35% for opal panels
Strength:	The polycarbonate is vandal and shatter resistant The glass is toughened and laminated during the manufacturing process
Colour Options:	The polycarbonate is available in clear and opal, the glass is available in clear
Temperature Resistance:	From -20°C to +100°C for the polycarbonate

International Standards:

Fire Ratings:	Polycarbonate panels: European standard BS476 Part 7 class 1 fire and EN 13501 B-S1, D0.
CE Marked	Yes to UKCA BS EN1090-1:2009+A1:2011

Colour Options:

	Standard Colours	Non Standard Colours (Additional costs may apply)
Steel Framework	Our standard RAL colours are:  9910 3000 1023 6018 6005 9005 7016 7012 7001 5015 5005	Any RAL colour
Aluminium Roof Rafter Bars	 9910	Any RAL colour
Polycarbonate Roof Covering	 Clear Opal 9910	N/A

Weather Protection:

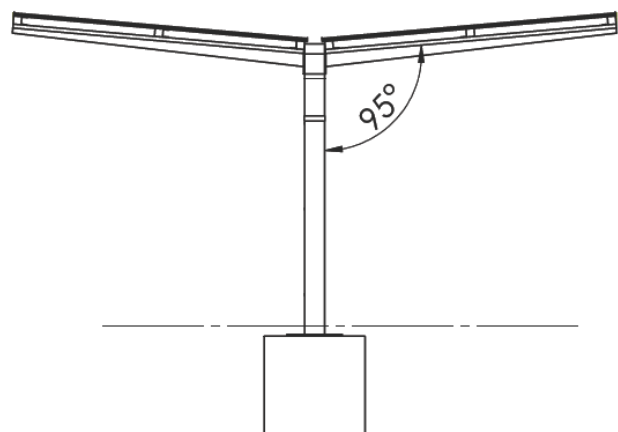
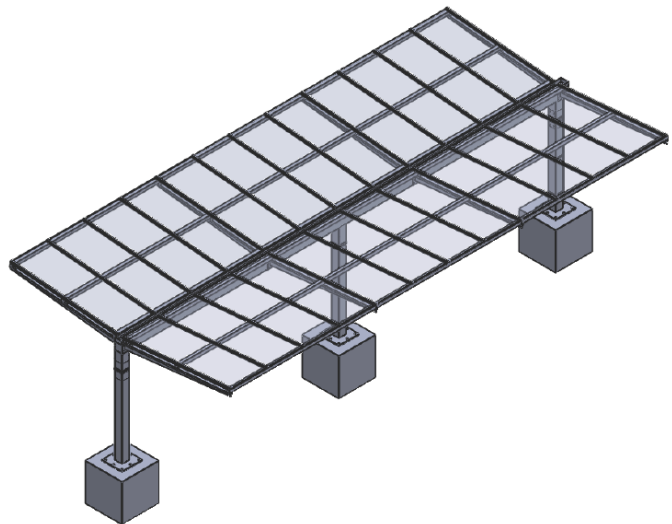


Available Upgrades:

Post Pads	✓
Signage	✗
Polycarbonate Side & Front Fills	✗
Tensile Fabric Side Panels	✗
Rainbow Package	✗
Roller Shutters	✗
Coloured Polycarbonate	✓
Guttering and uPVC downpipes	N/A supplied as standard
Gable Ends	N/A

Technical Files Available:

PDF CAD File	✓
DXF CAD File	✓
IGES CAD File	✓
STL CAD File	✓
BIM File	✓
NBS Spec	✓



0800 389 9072

www.ablecanopies.co.uk

sales@ablecanopies.co.uk

9-11 Faraday Close, Gorse Lane Industrial Estate, Clacton on Sea, Essex CO15 4TR

V1.6 LU120625