

# THE EDEN SOLAR CANOPY

## Data Sheet

The Eden is a stylish solar canopy that is constructed from a galvanised steel frame and features a corrugated steel roof that can be fitted with solar panels of your choice that are either supplied by us or sourced by yourself.



0800 389 9072

[www.ablecanopies.co.uk](http://www.ablecanopies.co.uk)  
[sales@ablecanopies.co.uk](mailto:sales@ablecanopies.co.uk)

### Dimensions:

**Available Lengths:** Unlimited

**Available Widths:** 4m, 5m, 6m (other lengths available on request)

**Height:** To your specification

**Spacing Between Posts:** Up to 6 metres

### Features:

**Wall Mounted or Freestanding:** Freestanding

**Suitable for:** Education | Hospitality | Leisure | Retail | Commercial | Healthcare

**Guarantee:** Frame: None | Solar Panels: Dependant on the panels chosen

**Life Expectancy:** Up to 25 years for the frame and corrugated roof sheets

**Maintenance:** The solar panels should be cleaned regularly for maximum UV absorption

**Installation Type:** Permanent

**Retractable/Collapsible:** No

**Method of Fixing:** Posts are installed into the ground with pad stones, the size depends on the location and canopy size

**Solar Benefits:** The solar panels generate energy from the sun to save you cash on your electricity bills

### Frame Specifications:

**Construction Material:** The posts are made from 100mm x 100mm x 4mm steel hollow section

**Guttering:** Aluminium box guttering with uPVC downpipes fitted as standard

**Frame Finish:** Galvanised as standard

**Colour Options:** Available powder coated in any standard RAL colour at an additional cost

**Fixings:** Resin anchors

### Roof Specifications:

**Roof Frame:** Steel roof bars and frame

**Roof Covering:** Covered with 0.7mm thick corrugated steel panels that are coated with PVC Plastisol. Available with solar panels that are specific to each project.

**UV Protection:** Dependant on the panels selected

**Light Transmission:** Dependant on the panels selected

**Strength:** Dependant on the panels selected

**Colour Options:** The corrugated steel panels are available in 11 colours, please see overleaf.

**Temperature Resistance:** Dependant on the panels selected

## International Standards:

### CE Marked

The frame is CE marked to UKCA BS EN1090-1:2009+A1:2011

The corrugated roof sheets are CE marked to CE EN 14782

## Colour Options:

### Standard Colours (Additional costs apply)

#### Steel Framework

Available in any RAL colour, please see below a selection of our standard RAL colours as an example (additional costs apply)



#### Corrugated Roof Panels



## Weather Protection:



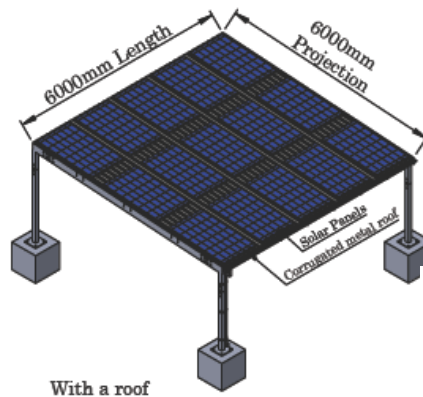
(Dependant on the panels chosen.)

## Available Upgrades:

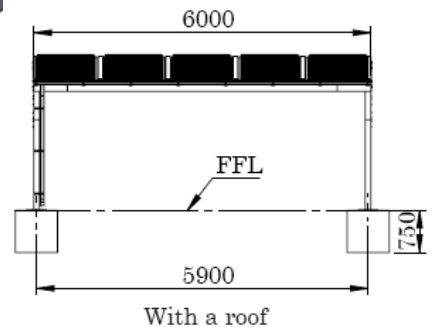
Post Pads	✕
Steel Post Protectors	✕
Signage	✕
Polycarbonate Side & Front Fills	✕
Tensile Fabric Side Panels	✕
Rainbow Package	✕
Roller Shutters	✕
Coloured Polycarbonate	✕

## Technical Files Available:

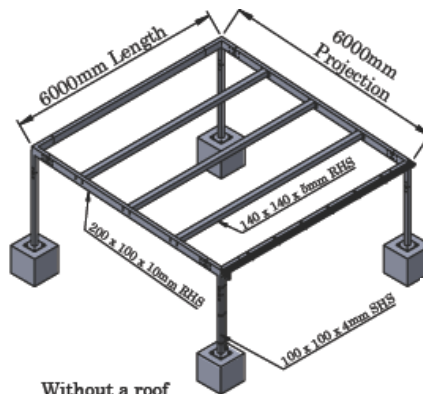
PDF CAD File	✓
DXF CAD File	✓
IGES CAD File	✓
STL CAD File	✓
BIM File	✓
NBS Spec	✓



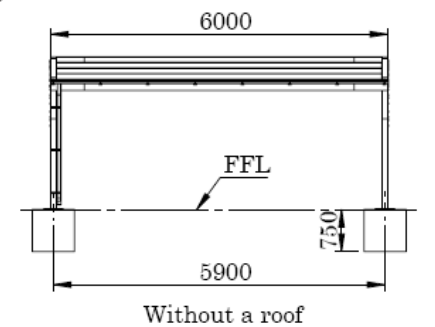
With a roof



With a roof



Without a roof



Without a roof



0800 389 9072

[www.ablecanopies.co.uk](http://www.ablecanopies.co.uk)

[sales@ablecanopies.co.uk](mailto:sales@ablecanopies.co.uk)

9-11 Faraday Close, Gorse Lane Industrial Estate, Clacton on Sea, Essex CO15 4TR

V1.4 LU300725