

# THE DENVER SHELTER

## Data Sheet

The Denver is a striking, modern timber bicycle shelter with curved glu-laminated timber beams. It offers stylish cycle storage for up to 10 bikes with a standard 4.2m x 1.6m sized shelter.



0800 389 9072

[www.ablecanopies.co.uk](http://www.ablecanopies.co.uk)  
[sales@ablecanopies.co.uk](mailto:sales@ablecanopies.co.uk)

### Dimensions:

Length:	4.2 metres
Width/Projection:	1.6 metres
Height:	2.1 metres
Spacing Between Posts:	Up to 4.2 metres

### Features:

Wall Mounted or Freestanding:	Freestanding
Suitable for:	Education   Hospitality   Leisure   Retail   Commercial   Healthcare
Applications include:	Cycle Shelter   Waiting Shelter   Smoking Shelter
Guarantee:	N/A
Life Expectancy:	Up to 15 Years
Maintenance:	Requires only periodic cleaning and retreatment is recommended approx. every 4-5 years
Installation Type:	Permanent
Retractable/Collapsible:	No
Method of Fixing:	Fixed to the ground with 250mm x 250mm galvanised steel base plates that are slotted and fixed into the timber posts using M16 bolts with countersunk holes

### Frame Specifications:

Construction Material:	The main frame is made from 90mm x 120mm timber posts, 120mm x 80mm timber purlins and 100mm x 90mm timber beams. All timber can be supplied with PEFC certification
Guttering:	None
Frame Finish:	The timber frame is finished in a choice of 13 different wood stain colours
Fixings:	316 marine grade stainless steel fixings


### Roof Specifications:

Roof Frame:	The main frame is made from 100mm x 120mm Glulam timber with 120mm x 45mm planed timber beams which are recessed into the main curved roof bar on the shelter. All timber can be supplied with PEFC certification
Roof Covering:	5mm solid polycarbonate panels
UV Protection:	Over 98% for the polycarbonate
Light Transmission:	The 5mm polycarbonate offers 92% for clear panels and 47% for opal panels
Strength:	The polycarbonate panels are vandal and shatter resistant and 200 times stronger than glass
Temperature Resistance:	From -20°C to +100°C for the polycarbonate

## International Standards:

<b>Roof Panel Fire Rating:</b>	Roof panels: European standard BS476 Part 7 class 1 fire and EN 13501 B-S1, D0. Timber frame: Fire resistant to European standard BS 5268
<b>CE Marked</b>	Yes to UKCA BS EN1090-1:2009+A1:2011
<b>Timber Performance:</b>	Complies with the requirements of British Standard BS EN 386: 2001

## Colour Options:

	Standard Colours	Non Standard Colours (Additional costs may apply)
<b>Timber Framework</b>	Our standard colours are: 	N/A
<b>Polycarbonate Roof Covering</b>		N/A

## Weather Protection:

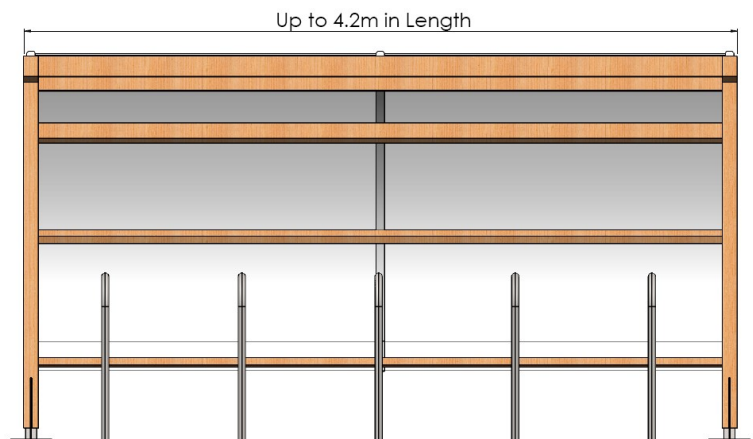
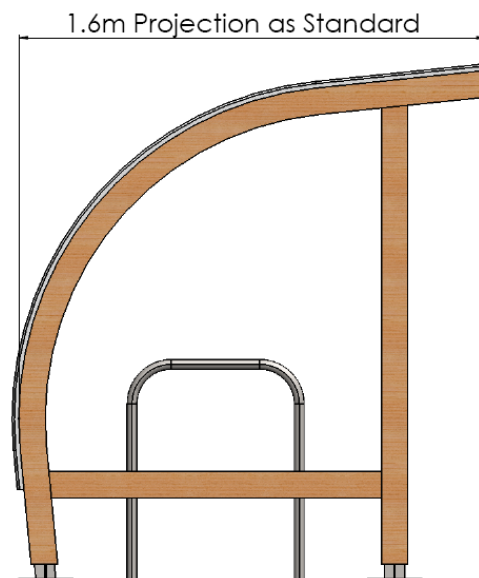


## Available Upgrades:

Post Pads	✗
Signage	✗
Polycarbonate Side Panels	✓
Glass Side & Back Panels	✗
Tensile Fabric Side Panels	✗
Rainbow Package	✗
Roller Shutters	✗
Coloured Polycarbonate	✗
Guttering and uPVC downpipes	✗
Cycle Racks	✓

## Technical Files Available:

PDF CAD File	✓
DXF/DWG CAD File	✓
IGES CAD File	✓
STL CAD File	✓
BIM File	✓
NBS Spec	✓



0800 389 9072

[www.ablecanopies.co.uk](http://www.ablecanopies.co.uk)

[sales@ablecanopies.co.uk](mailto:sales@ablecanopies.co.uk)

9-11 Faraday Close, Gorse Lane Industrial Estate, Clacton on Sea, Essex CO15 4TR

V1.4 LU300725