

THE BLENHEIM UMBRELLA Data Sheet

The Blenheim Umbrella is a high strength, waterproof shade and shelter structure that can be opened and closed as and when required.



0800 389 9072

www.ablecanopies.co.uk
sales@ablecanopies.co.uk

Dimensions:

Available Sizes:	2.8m x 2.8m, 3m x 4m and 4.2m x 4.2m
Height:	3.2m - 3.84 m Head clearance 2.1m—2.27m
Spacing Between Posts:	N/A

Features:

Wall Mounted or Freestanding:	Freestanding
Suitable for:	Education Hospitality Leisure Retail Commercial Healthcare
Guarantee:	2 years for the steel frame Up to 10 years for the fabric
Life Expectancy:	Up to 10 year limited warranty
Maintenance:	Requires only periodic cleaning
Installation Type:	Permanent
Retractable/Collapsible:	Yes
Method of Fixing:	Choice of: Installed into pad stones beneath the ground level Ground fixing with a steel deck plate Above ground fixing into free standing bases (See page 3 for details)

Frame Specifications:

Construction Material:	The main frame is made from 316 marine grade 76mm stainless steel tubing with a 3mm wall thickness.
Guttering:	None as standard Guttering is available as an upgrade when linking two umbrellas together
Frame Finish:	N/A
Colour Options:	Natural stainless steel finish only
Fixings:	Stainless steel fixings

Roof Specifications:

Roof Frame:	The main ribs are 42mm x 1.6mm stainless steel The supporting ribs are 38mm x 1.5mm stainless steel
Roof Covering:	1100 dtex PES HT waterproof tensile fabric with a weight of 590 g/sqm
UV Protection:	Up to 98% depending on the colour chosen
Light Transmission:	The amount of light transmittance depends on the colour chosen, it varies from 17% - 78%
Tensile Strength:	The tensile fabric has a strength of 250/250 da N/5 cm
Colour Options:	Available in a range of colours as shown overleaf
Temperature Resistance:	TBC

International Standards:

Fire Ratings:	Tensile fabric: European standard B-s2,d0/EN 13501-1
Strength Tests:	Tensile strength: 250/250 daN/5cm European standard EN ISO 1421 Tear strength: 25/20 daN European standard DIN 53.363
Wind Resistance:	The only parasol in the UK to conform to BS EN 13782 guaranteeing wind resistance to 100kph.
CE Marked	Yes to UKCA BS EN1090-1:2009+A1:2011

Colour Options:

	Standard Colours	Non Standard Colours
Framework	 White	 Steel
Tensile Roof Covering	 White	 Aniseed  M Green  T Green  Spruce  P Green  Celadon  S Blue  Lagoon  T Blue  C Blue  D Blue  V Blue  Champagne
		 M Blue  Marine  Concrete  Boulder  Black  Orange  Dijon  Terracotta  Carrot  Burgundy  Raspberry  Poppy  Buttercup
		 Cocoa  Teak  Olive  Pepper  Camel  Vanilla  Hemp  Sandy  Lemon  Walnut  Beige  Stain

Weather Protection:



Available Upgrades:

Post Pads	✓
Signage (printed on the fabric)	✓
Polycarbonate Side & Front Fills	✗
Tensile Fabric Side Panels	✓
Rainbow Package	✗
Roller Shutters	✗
Heating and Lighting	✓
Guttering (to connect multiple umbrellas)	✓
Mast Clamp*	✓

Technical Files Available:

PDF CAD File	✓
DXF CAD File	✓
IGES CAD File	✓
STL CAD File	✓
BIM File	✓
NBS Spec	✓



**Ideally the Blenheim should not be left vertical when closed for extended periods of time without fitting the optional mast clamp plate to take the tension out of the canopy. If left closed without the clamp ring correctly fitted, the fabric could stretch. This will not be covered under the guarantee.*



0800 389 9072

www.ablecanopies.co.uk

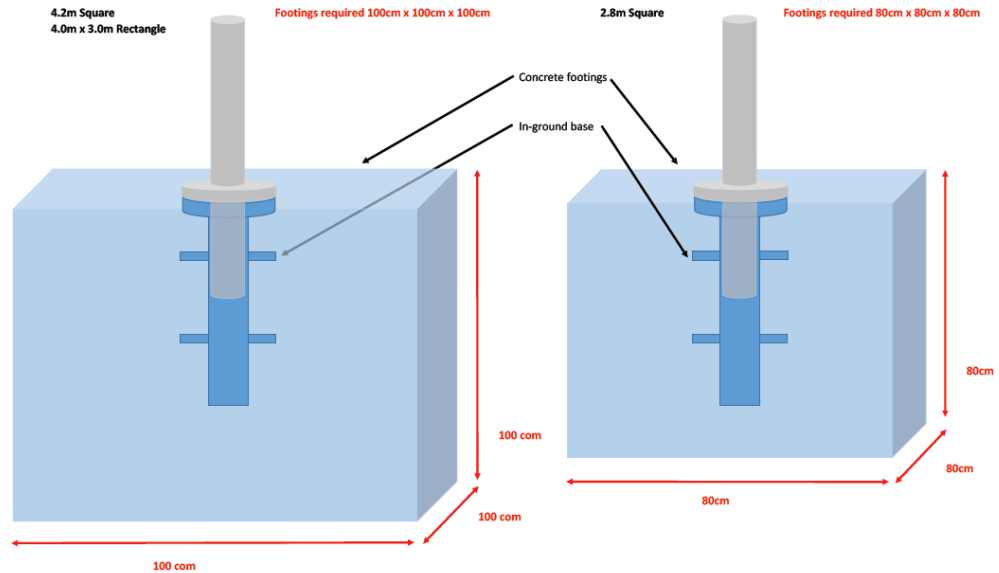
sales@ablecanopies.co.uk

9-11 Faraday Close, Gorse Lane Industrial Estate, Clacton on Sea, Essex CO15 4TR

V1.5 LU190625

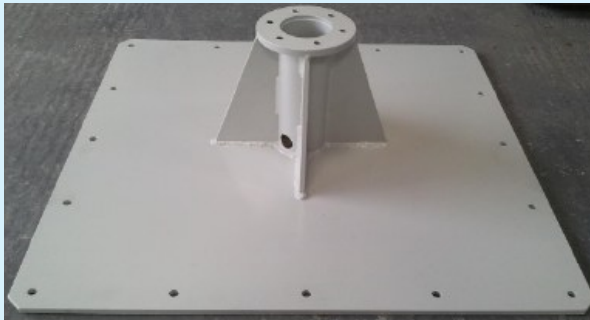
Method of Fixing Options:

Below Ground Pad Stones:



Deck Plate Fixing:

If using a deck plate, it should be bolted to a suitable solid surface. If it is to be bolted to decking it will be necessary to reinforce the structure below the surface boards. The surface that the plate is being bolted to will determine the size and type of bolts required.



Above Ground Free-standing Bases:

Please note: Freestanding bases will not provide the same stability in windy conditions. If winds are forecast, you are advised to close the parasol.



0800 389 9072

www.ablecanopies.co.uk

sales@ablecanopies.co.uk

9-11 Faraday Close, Gorse Lane Industrial Estate, Clacton on Sea, Essex CO15 4TR

V1.5 LU190625