

THE AINSLEY SHELTER

Data Sheet

The Ainsley is a contemporary style shelter and canopy that can provide weather protection to entrances, cycle parking areas, waiting areas, smoking zones and much more.



0800 389 9072

www.ablecanopies.co.uk
sales@ablecanopies.co.uk

Dimensions:

Length:	Unlimited
Width/Projection:	Up to 5 metres
Height:	To your specification
Spacing Between Posts:	Up to 4 metres

Features:

Wall Mounted or Freestanding:	Freestanding
Suitable for:	Education Hospitality Leisure Retail Commercial Healthcare
Applications include:	Free Standing Canopy Entrance Canopy Cycle Shelter Waiting Shelter Smoking Shelter Shopping Trolley Shelter Bus Shelter Pay and Display Shelter
Guarantee:	N/A
Life Expectancy:	Up to 25 Years
Maintenance:	Requires only periodic cleaning
Installation Type:	Permanent
Retractable/Collapsible:	No
Method of Fixing:	Posts are installed into the ground with 250mm x 250mm x 10mm base plates into 600mm x 600mm pad stones

Frame Specifications:

Construction Material:	The main frame is made from 60mm x 60mm x 3mm steel hollow section The posts are made from 60mm x 60mm x 3mm steel hollow sections
Guttering:	None as standard - available at an additional cost
Frame Finish:	Powder coated Also available galvanised at an additional cost
Fixings:	316 marine grade stainless steel fixings

Roof Specifications:




Roof Frame:	Roof bars are made from 60mm x 60mm x 3mm steel box sections where there are posts, with self supporting aluminium rafter bars in between
Roof Covering:	5mm solid polycarbonate. Also available with 16mm structured polycarbonate, 8mm toughened glass or corrugated steel panels
UV Protection:	Over 98% for the polycarbonate
Light Transmission:	The 16mm polycarbonate offers 73% for clear panels and 35% for opal panels The 5mm polycarbonate offers 92% for clear panels and 47% for opal panels
Strength:	The polycarbonate panels are vandal and shatter resistant and 200 times stronger than glass
Temperature Resistance:	From -20°C to +100°C for the polycarbonate

International Standards:

Roof Panel Fire Rating: European standard BS476 Part 7 class 1 fire and EN 13501 B-S1, D0.

CE Marked Frame: Yes, to UKCA BS EN1090-1:2009+A1:2011

Colour Options:

	Standard Colours	Non Standard Colours (Additional costs may apply)
Steel Framework	Our standard RAL colours are:  9910 3000 1023 6018 6005 9005 7016 7012 7001 5015 5005	Any RAL colour
Aluminium Roof Rafter Bars	 9910	Any RAL colour
Polycarbonate Roof Covering	 Clear Opal 9910	N/A

Weather Protection:

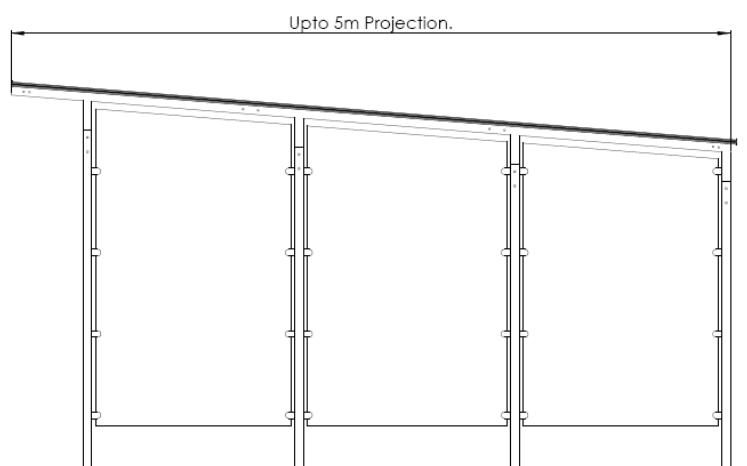
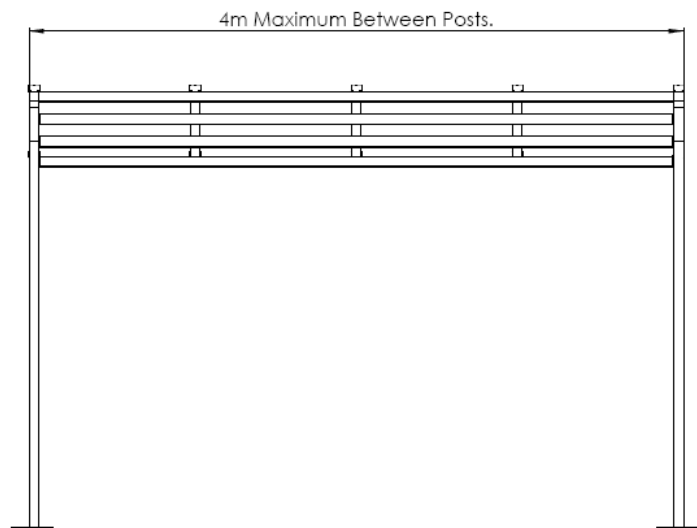


Available Upgrades:

Post Pads	✓
Signage	✗
Polycarbonate Side & Back Panels	✓
Glass Side & Back Panels	✓
Tensile Fabric Side Panels	✗
Rainbow Package	✗
Roller Shutters	✗
Coloured Polycarbonate	✗
Guttering and uPVC downpipes	✓
Cycle Racks	✓
BREEAM compliant design	✓
Built-in Benches	✓

Technical Files Available:

PDF CAD File	✓
DXF/DWG CAD File	✓
IGES CAD File	✓
STL CAD File	✓
BIM File	✓
NBS Spec	✓



0800 389 9072

www.ablecanopies.co.uk

sales@ablecanopies.co.uk

9-11 Faraday Close, Gorse Lane Industrial Estate, Clacton on Sea, Essex CO15 4TR

V1.4 LU250725