

The PHO Board of Directors is pleased to introduce the winners of the 2025 PHO Scholarship Awards Program. Now in its seventh year, this competitive program continues to draw applications from early-career clinicians, researchers, and students from around the world. Since 2019, the PHO has awarded 55 scholarships to learn, share, and engage at the annual conference.

Thank you to our generous donors -- members and others -- who *give back by giving forward*. Their gifts to the PHO Scholarship Fund and the PHO Mission Fund provide an opportunity for the next generation of clinicians and researchers to participate in this conference.

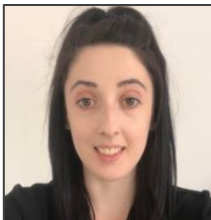
Meet the 2025 Scholarship Award Recipients



Emily Berich-Anastasio, MPH, LGPC is a licensed graduate professional counselor at Sheppard Pratt in Baltimore, Maryland USA, one of the country's largest private non-profit psychiatric healthcare institutions. Emily is focused on the clinical application of ePRO data at the point-of-care across distinct mental healthcare service delivery models and on sharing how data-driven psychiatry can enhance clinical services.



Kimberly Brown, PhD is a post-doctoral fellow in pediatric psychology at Children's Wisconsin, Medical College of Wisconsin, in Milwaukee USA. Kimberly's research presents how the integration of PROMIS in pre-appointment screening has helped guide multi-disciplinary program development by identifying a need for psychosocial support. PROMIS is aiding in discussion with families and allowing providers to more efficiently provide targeted intervention.



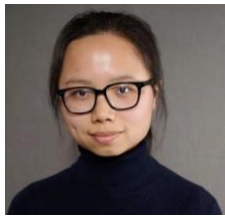
Rachel Chambers, BSc (Hons), MSc is a PhD Student at Cicely Saunders Institute at Kings College London, UK. Rachel's recent work has included a systematic review of patient-reported outcome measures (PROMs) validated for young adults living with life-limiting conditions, evaluating their psychometric properties. As co-host of the COSMIN European research club, Rachel facilitates discussions on outcome measurement and measurement properties.



Jad Fadlallah, MS, a medical student at University Health Network in Toronto Canada, is interested in solid organ transplantation and plans to integrate PROMIS into his future practice as a physician-scientist. Recently, Jad has focused his research on identifying different clusters of recovery after transplantation using PROMIS, with the aim of supporting earlier intervention for patients at risk of delayed recovery.



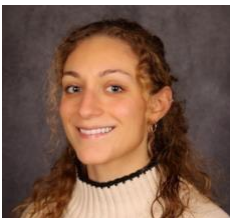
Antje Forster, MD is an internal medicine resident at Charité - University Medicine Berlin in Germany. With an interest in psychosomatics, Antje is investigating the longitudinal performance of PROMIS' health state utility score PROPr in cancer patients. Another project includes the development of PRO standard sets for different cancer entities and the cooperation with Samsung Medical Center Seoul on standardization, harmonization, and cultural adaptation of PROs.



Yuxi Jiang, MS is an early career research data scientist at the University of California, San Francisco USA. Yuxi has collaborated on a cluster analysis that categorized patients into four symptom profiles based on PROMIS physical function, pain, and mood scores. Analyzing the profiles against socio-demographics, health utilization, and tatus indicators, key predictors of quality-of-life outcomes, informing personalized treatment planning and optimized care delivery were identified.



Yining Lu is a doctoral student in information systems and statistics at the University of Colorado, Boulder USA. Yining participated in a recent study that used a fine-tuned large language model to validate and clarify the internal structures of seven PROMIS item banks. The study revealed cross-construct overlaps and provided guidance for improving measurement precision across domains, such as social isolation, fatigue, and physical function.



Caroline Palermo, BA is a clinical research coordinator at the University of Rochester in New York USA and a medical school applicant. As a human subject research specialist, Caroline coordinates activities in the Dept. of Orthopaedics, performs tests according to study protocols, and assists with recruitment and screening activities for a number of prospective studies. Caroline's research presents findings on the role of PROMIS role in preventative medicine, specifically screening for falls.



Henry Shu, MD is an orthopedic surgery resident at Hopkins University School of Medicine in Baltimore, Maryland USA. Henry's major research goal is to demonstrate the clinical utility of PROMIS in orthopaedic trauma, which has been one of the slowest orthopaedic subspecialties to adopt PROMIS in routine practice. Henry's long-term goal is to be an academic orthopaedic traumatologist who designs and leads multicenter clinical trials.



Xin Zhang, PhD is a post-doctoral fellow at Saw Swee Hock School of Public Health at the National University of Singapore. With a background in nursing, Xin's current research is focused on the development and application of preference-based health outcome measures. The goal is to leverage PROMIS to establish and apply the value set of PROPr in Asia and to implement PROMIS profiles in clinical settings to evaluate their validity and reliability.