

PROTECTING THE SHAWANGUNKS

for people, for habitat, forever



OPEN SPACE
INSTITUTE



RIVER-TO-RIDGE TRAIL



The River-to-Ridge Trail was created in partnership by the Open Space Institute (OSI) and Mohonk Preserve, with the support of the Butler Conservation Fund. The trail traverses land conserved by OSI and is intended for public use and enjoyment.

This six-mile loop trail connects the Walkkill Valley Rail Trail/Empire State Trail in the Village of New Paltz to the carriage roads and footpaths of the Shawangunk Ridge.

Because the River-to-Ridge Trail runs along active farmland and is adjacent to private property, visitors are required to stay on the trail and respect the agricultural operations and neighboring properties.



RULES OF THE TRAIL

The River-to-Ridge Trail is open down to dusk, and admission is free to trail users. For your safety and enjoyment, we ask that trail users and guests help maintain the operation of this trail by following and helping others follow these simple rules.

- | | | |
|--|---|--|
|  No Motorized Vehicles |  Clean Up After Pets |  No Camping |
|  Stay on Trail |  No Smoking |  No Hunting or Trapping |
|  No Dumping or Littering |  No Alcohol or Drugs |  No Firearms |
|  Leash Your Pets |  No Campfire |  No Drones |

ABOUT THE OPEN SPACE INSTITUTE



The Open Space Institute (OSI) protects scenic, natural and historic landscapes to provide public enjoyment, conserve habitat and working lands, and sustain communities from Canada to Florida.

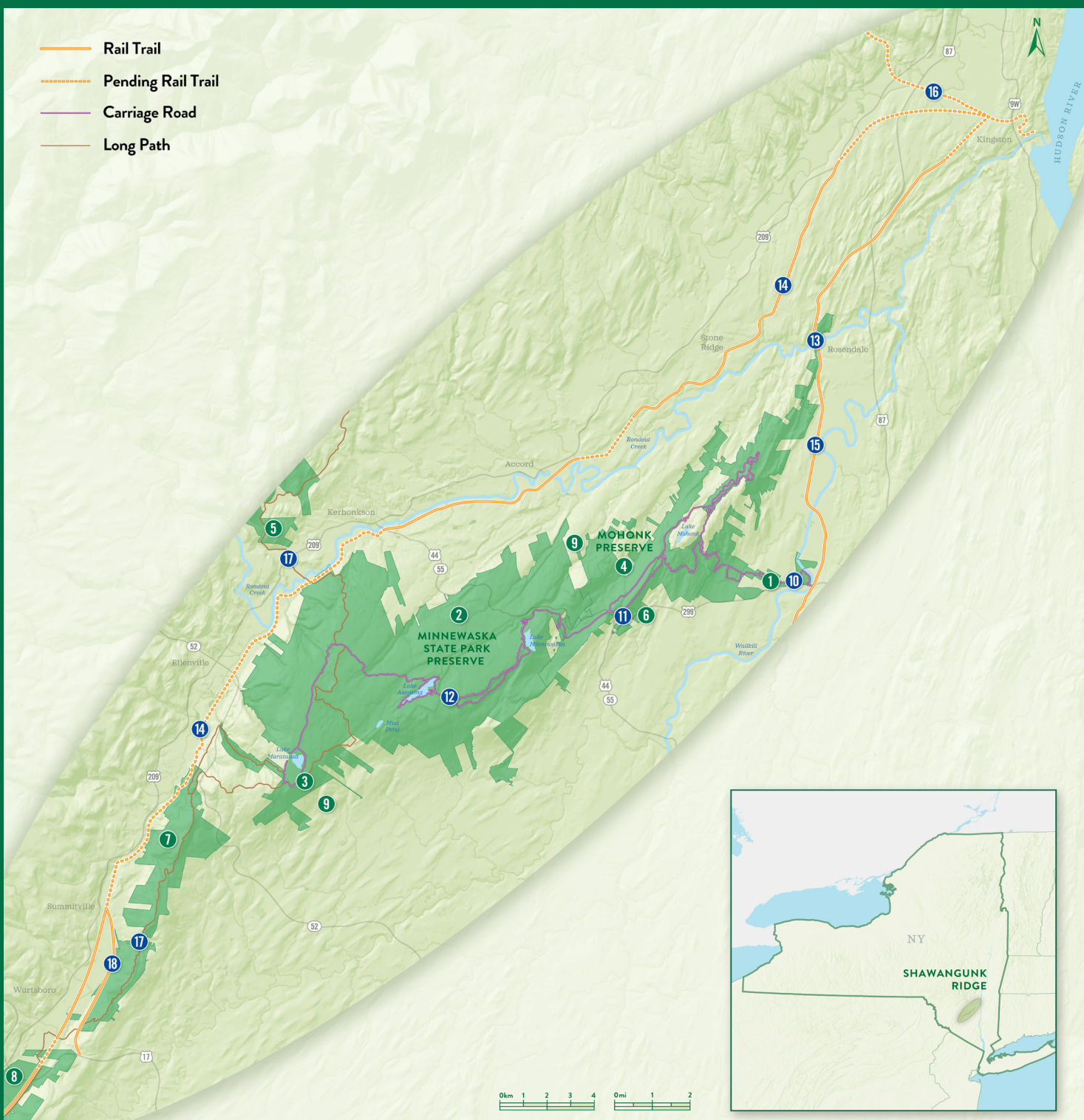
Over the past four decades, OSI has protected nearly 33,000 acres on and along the Shawangunk Ridge in Orange, Sullivan and Ulster counties—a total more than twice the size of Manhattan.

This work, achieved with the support of local partners and generous donors, has expanded parkland, created trails, preserved local viewsheds, and protected vulnerable farmland and wildlife habitats.

Committed to protecting the 50-mile Shawangunk Ridge and improving public access to protected lands, OSI is also supporting the creation of a local rail trail network, rebuilding Victorian-era carriage roads, adding a visitor center to Minnewaska State Park Preserve and, in partnership with the Walkkill Valley Land Trust, restored the Rosendale Trestle.

Through our work in protecting critical landscapes and creating a world-class destination for trails, OSI remains committed to strengthening local communities by making them more livable, prosperous, and healthy.

OSI's Work in the Shawangunk Region



PROTECTING THE RIDGE

- 1

River-to-Ridge Preserve

A series of OSI acquisitions along the Wallkill River and adjoining agricultural flats totaling 360 acres protected this scenic agricultural landscape and set the stage for the River-to-Ridge Trail.
- 2

Minnewaska State Park Preserve

Over the past four decades, OSI has more than doubled the size of the Minnewaska, adding more than 12,000 acres to this unique landscape. Today, OSI is restoring carriage roads and creating a new Minnewaska visitor center.
- 3

Sam's Point at Minnewaska State Park Preserve

After a 20-year pursuit to protect this majestic property, OSI acquired the 4,800-acre Sam's Point area (also known as the Ellenville Ice Caves) in 1997. Today, Sam's Point and its globally rare dwarf pine barrens anchors the southern end of Minnewaska.
- 4

Mohonk Preserve

OSI has protected more than 1,500 acres in and around the Mohonk Preserve, and also helped restore several carriage roads on the Preserve and the new Trapps Bridge.
- 5

Sundown and Vernooey Kill State Forest

Once threatened by development, OSI worked with the Trust for Public Land to protect the 5,400-acre forested Lundy Estate. The property is now part of the Vernooey Kill State Forest and the Sundown Wild Forest.
- 6

Sam Pryor Shawangunk Gateway Campground

Located on OSI-protected land, the campground was built with the financial support of OSI.
- 7

Shawangunk Ridge, Roosa Gap, and Wurtsboro Ridge State Forests

OSI has assembled three state forests totaling over 5,000 acres on the southern Shawangunk Ridge. These state forests help protect much of the southern Shawangunks and the Shawangunk Ridge Trail, which runs from New Jersey to the Rosendale Trestle.
- 8

Bashakill Wildlife Management Area

One of OSI's first projects, the Bashakill Wildlife Management Area (WMA) is the largest pristine freshwater wetland in southeastern New York, with nearly 4,000 acres of protected lands.
- 9

OSI Land Assemblages

OSI continues to protect this historic landscape, using 40 years of experience to identify and conserve significant properties on and around the Shawangunk Ridge.

IMPROVING TRAILS AND RECREATION

- 10

River-to-Ridge Trail

OSI's River-to-Ridge Trail links the Village of New Paltz and the Wallkill Valley Rail Trail to the Shawangunk Ridge. The 6-mile long loop trail traverses agricultural land protected by OSI and is managed with the Mohonk Preserve
- 11

Minnewaska Visitor Center

Continuing its long legacy of protecting and improving Minnewaska State Park Preserve, OSI is designing and building the new Minnewaska Visitor Center. The center will introduce visitors to the park's network of carriage roads and footpaths, as well as its rich history, geology, and wildlife.
- 12

Minnewaska Carriage Roads

Originally constructed in the late 19th century, Minnewaska's Victorian-era carriage road network had fallen into disrepair. Thanks to OSI, more than 12 miles of Minnewaska's defining carriage roads have been restored including the Hamilton Point, Castle Point, Lake Awosting, and Old Smiley Carriage Roads.
- 13

Rosendale Trestle

After purchasing the trestle in 2009, OSI raised \$1.5 million and transformed this historic railroad bridge into a recreational walkway before transferring it to the Wallkill Valley Land Trust. The Rosendale Trestle provides views of the Rondout Creek and the Binnewater Hills, including the OSI-protected Joppenbergh Mountain.
- 14

O&W Rail Trail

OSI has protected critical stretches of the O&W Rail Trail including over 9 miles in the Catskills, three miles in the Town of Mamakating, and a beautiful 3-mile stretch that runs through the Town of Wawarsing.
- 15

Wallkill Valley Rail Trail

OSI permanently protected 11.5 miles of the trail between New Paltz and Kingston, including the Rosendale Trestle. The acquisition doubled the trail's length and greatly improved public access.
- 16

Catskill Mountain Rail Trail (Ashokan Rail Trail)

OSI spearheaded the feasibility and planning to spark the creation of this new multi-use rail trail from Kingston to the Catskill Park and along the Ashokan Reservoir.
- 17

Long Path

The 358-mile trail connects many of eastern New York's parks, preserves, and state forest lands. OSI has protected 40 miles of this popular long-distance hiking trail.
- 18

Mamakating Rail Trail

OSI acquired three miles of rail trail along the O&W rail bed in the Sullivan County town of Mamakating, connecting downtown Wurtsboro with the Wurtsboro Ridge, Roosa Gap, and Shawangunk Ridge State Forests.

CONNECT WITH US



facebook.com/River2Ridge



[@OpenSpaceInst](https://twitter.com/OpenSpaceInst)



[@openspaceinstitute](https://instagram.com/openspaceinstitute)



openspaceinstitute.org/donate



**OPEN SPACE
INSTITUTE**

openspaceinstitute.org